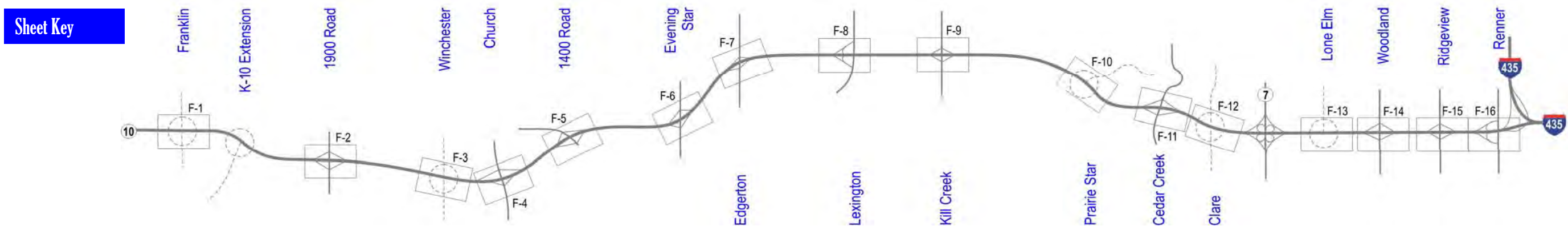
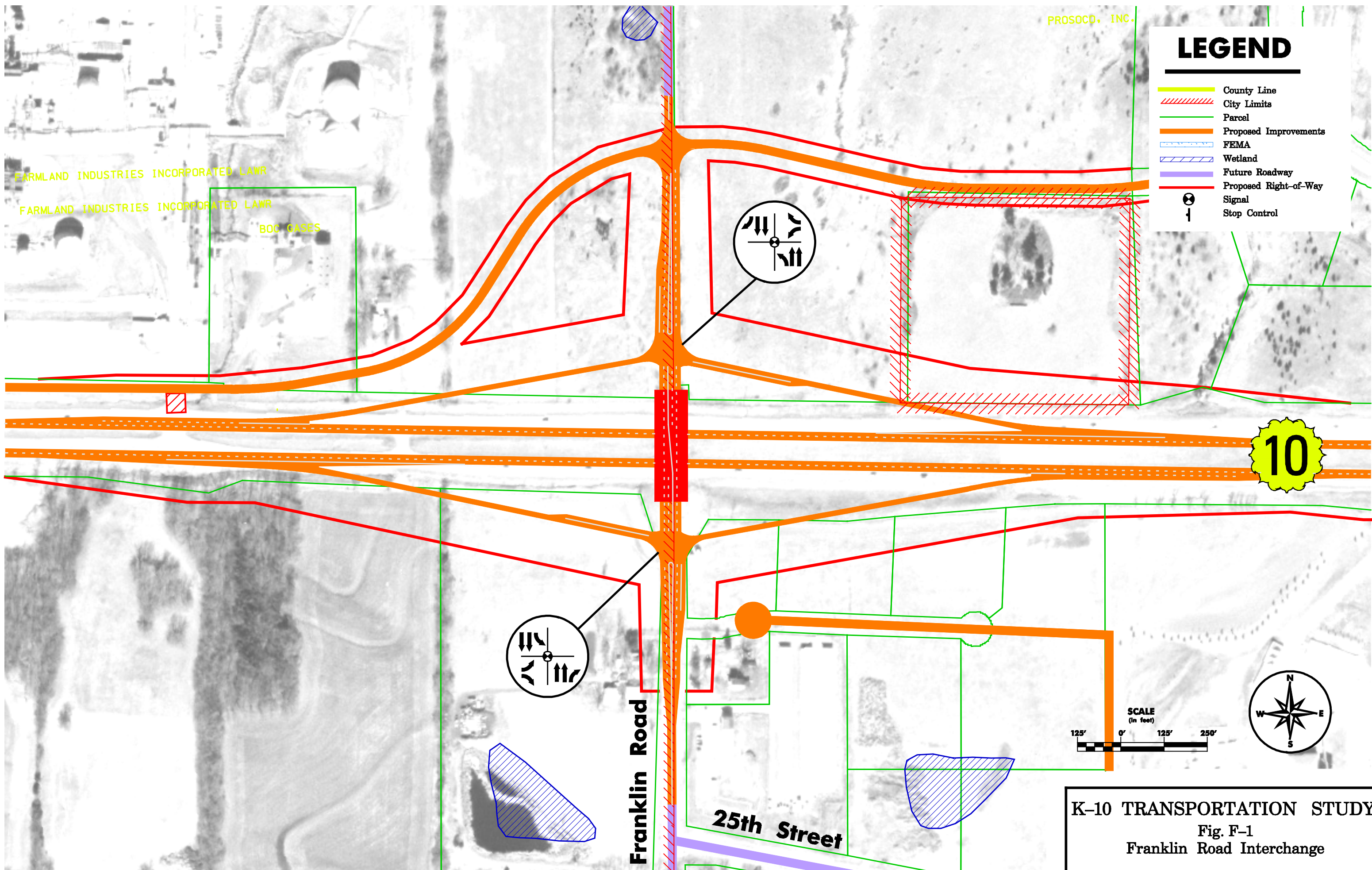


# Appendix F: Conceptual K-10 Interchanges Layout



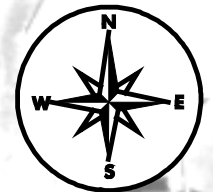
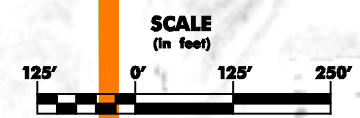




### LEGEND

- County Line
- City Limits
- Parcel
- Proposed Improvements
- FEMA
- Wetland
- Future Roadway
- Proposed Right-of-Way
- ⊙ Signal
- ↓ Stop Control

10



**K-10 TRANSPORTATION STUDY**  
 Fig. F-1  
 Franklin Road Interchange

**HDR HNTB** May 2005

FARMLAND INDUSTRIES INCORPORATED LAWR  
 FARMLAND INDUSTRIES INCORPORATED LAWR

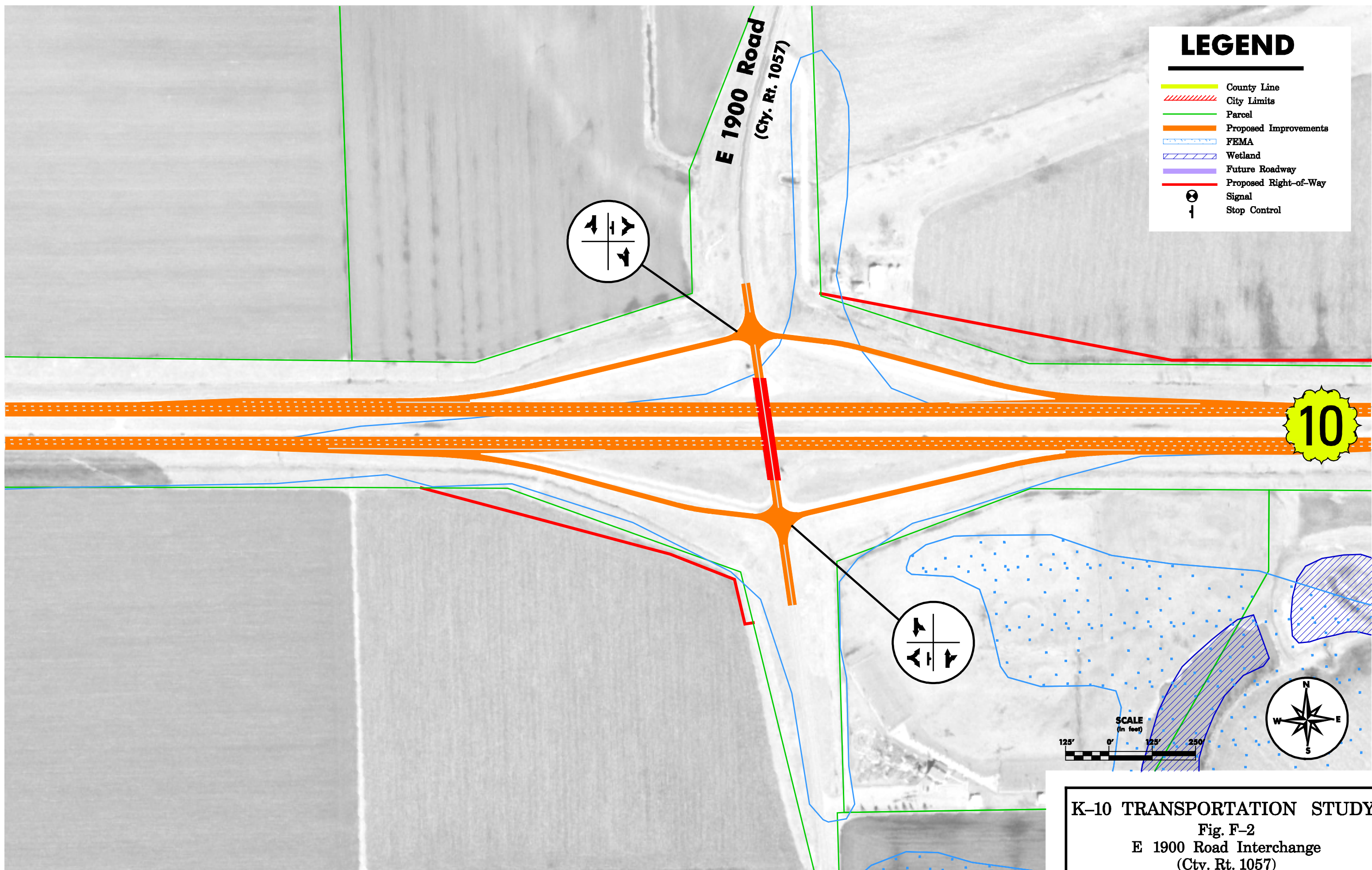
BOC CASES

PROSOCO, INC.

**Franklin Road**

**25th Street**





### LEGEND

- County Line
- City Limits
- Parcel
- Proposed Improvements
- FEMA
- Wetland
- Future Roadway
- Proposed Right-of-Way
- ⤴  
⤵  
⤶  
⤷ Signal
- ⊥ Stop Control

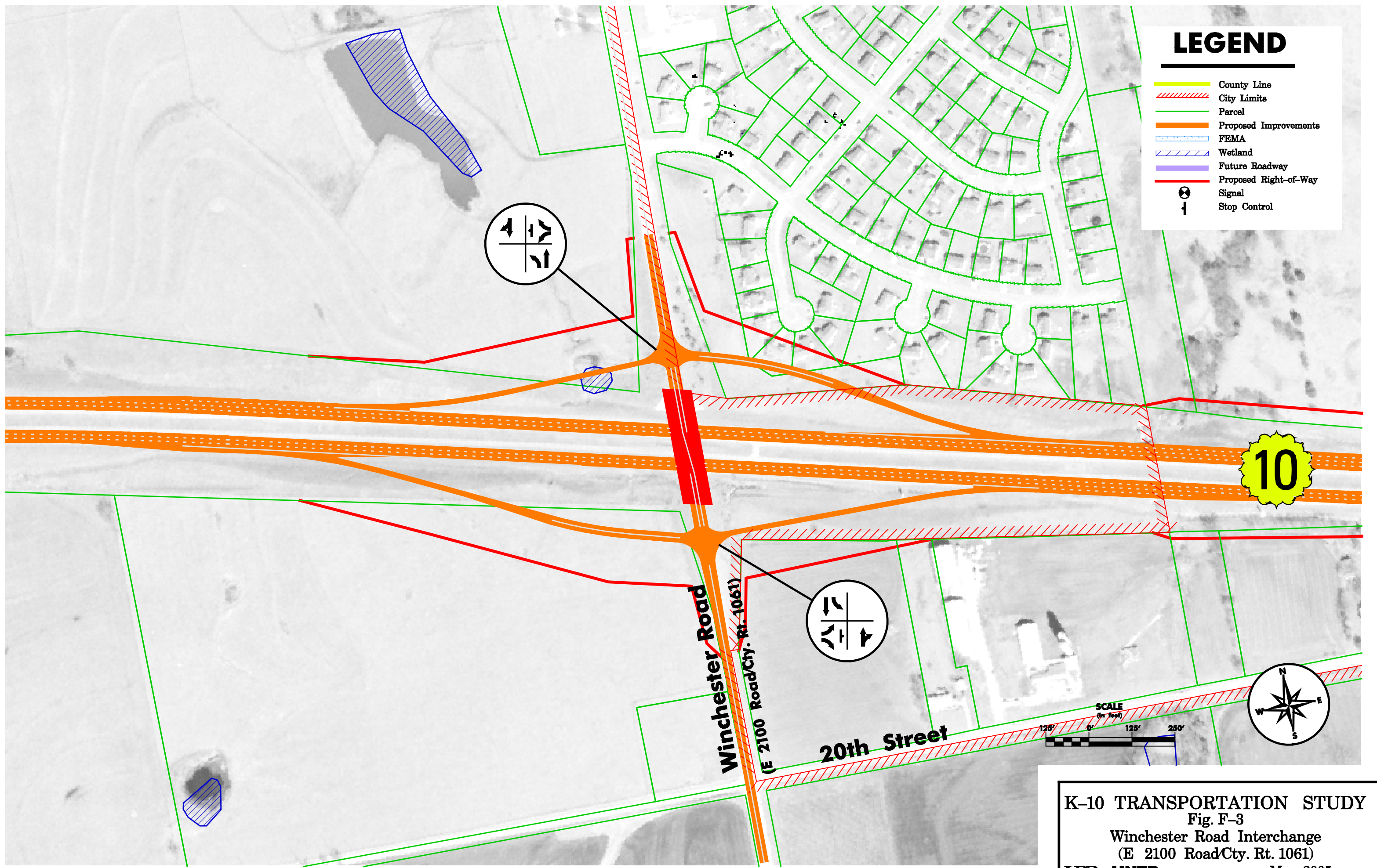


**K-10 TRANSPORTATION STUDY**  
**Fig. F-2**  
**E 1900 Road Interchange**  
**(Cty. Rt. 1057)**  
**HDR HNTB** May 2005



# LEGEND

- County Line
- City Limits
- Parcel
- Proposed Improvements
- FEMA
- Wetland
- Future Roadway
- Proposed Right-of-Way
- Signal
- Stop Control

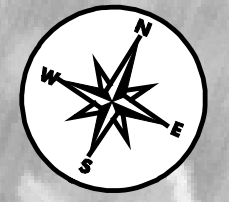
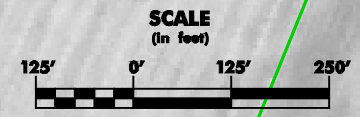
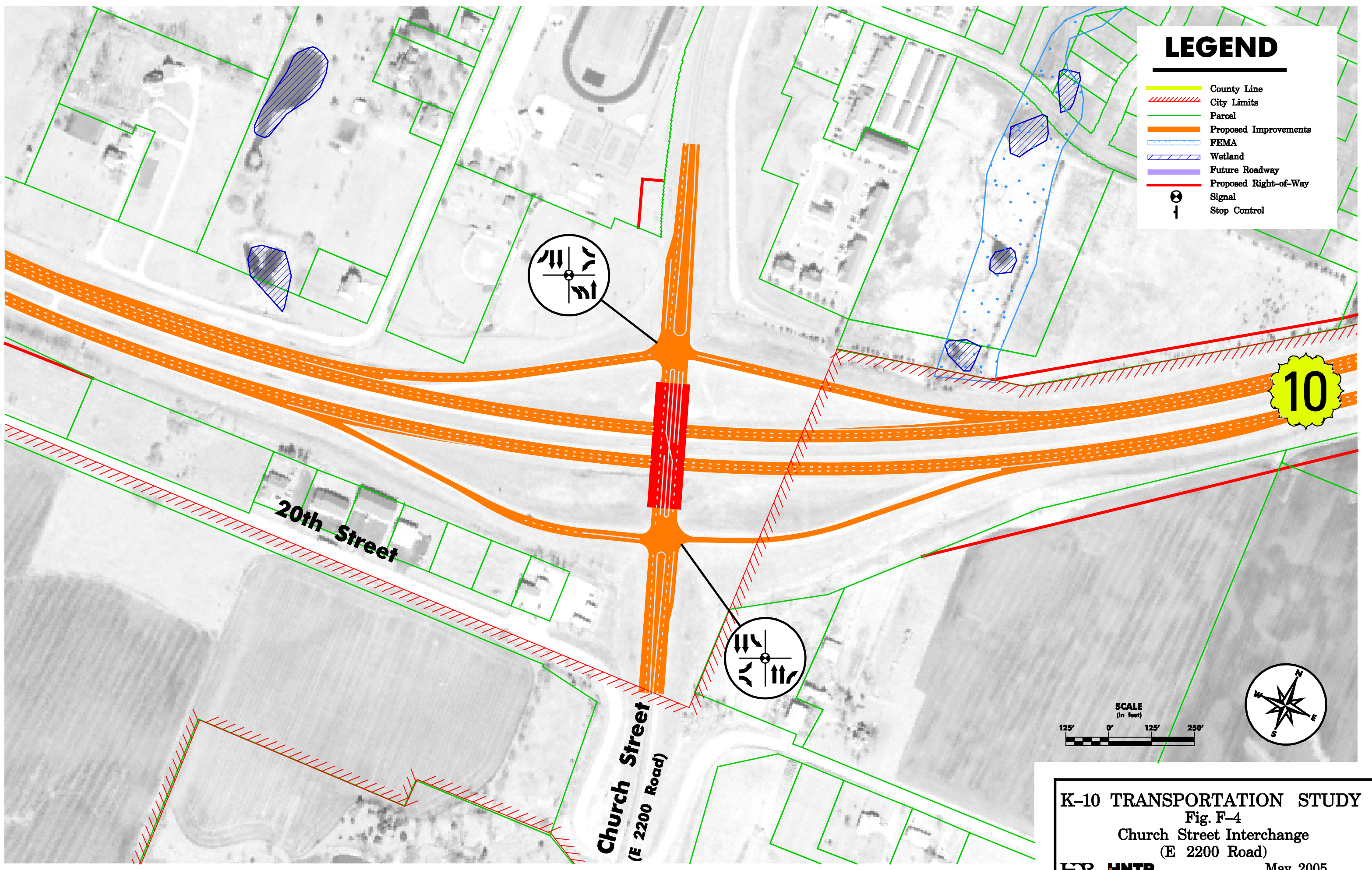


**K-10 TRANSPORTATION STUDY**  
Fig. F-3  
Winchester Road Interchange  
(E 2100 Road/Cty. Rt. 1061)  
**HDR HNTB** May 2005



# LEGEND

- County Line
- City Limits
- Parcel
- Proposed Improvements
- FEMA
- Wetland
- Future Roadway
- Proposed Right-of-Way
- Signal
- Stop Control



**K-10 TRANSPORTATION STUDY**  
Fig. F-4  
Church Street Interchange  
(E 2200 Road)  
**HDR HNTB** May 2005

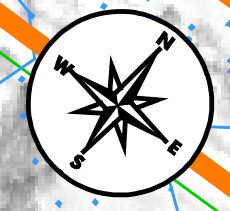
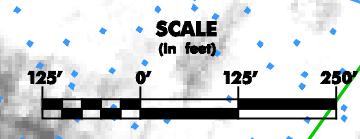


# LEGEND

- County Line
- City Limits
- Parcel
- Proposed Improvements
- FEMA
- Wetland
- Future Roadway
- Proposed Right-of-Way
- Signal
- Stop Control

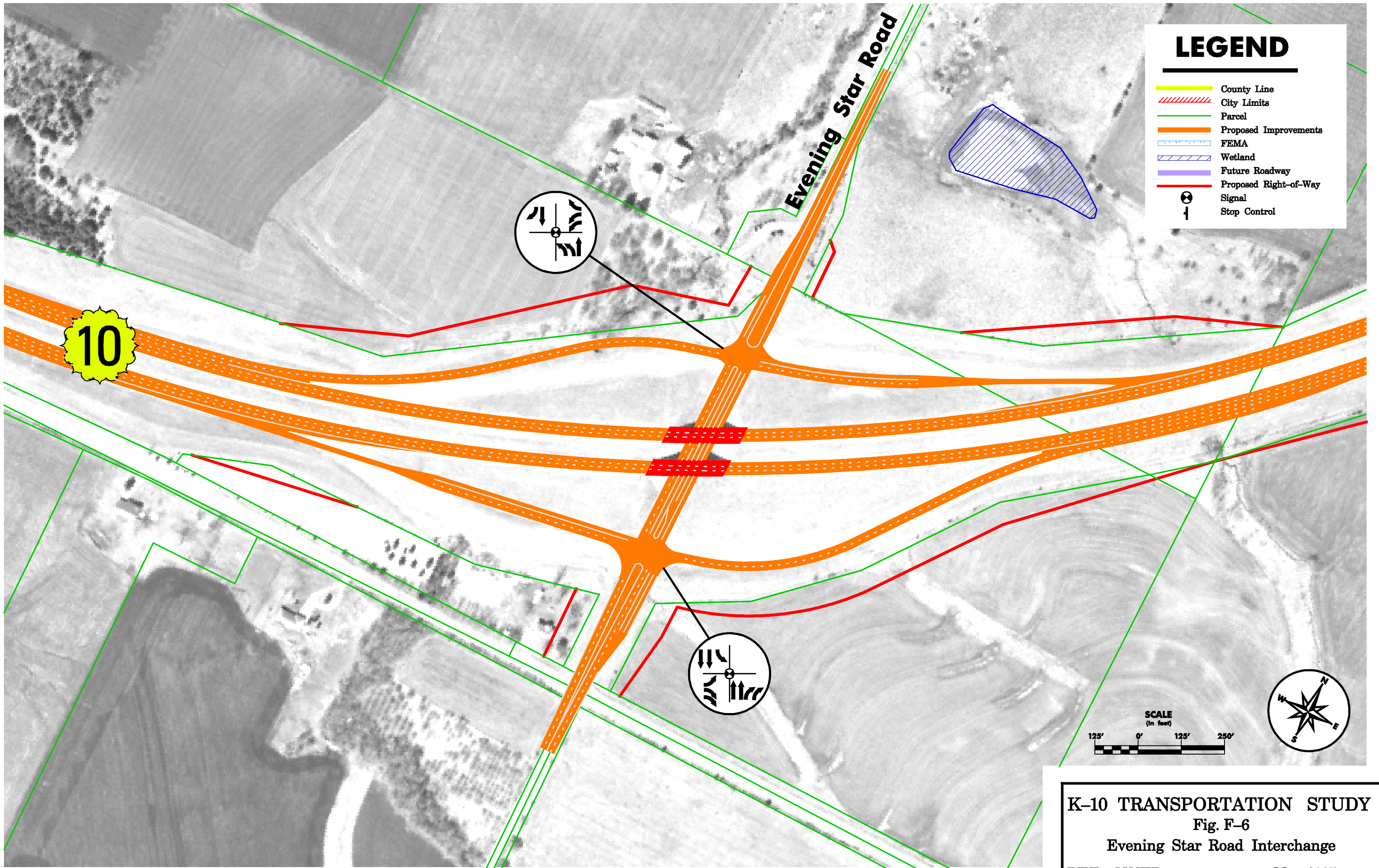
N 1400 Road  
(Cty. Rt. 442)

10













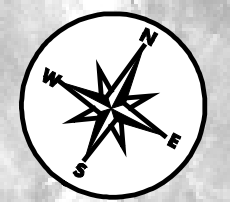
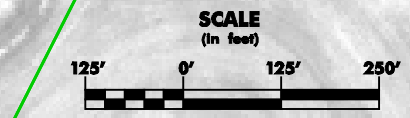
K-10 TRANSPORTATION STUDY  
Fig. F-5  
N 1400 Road Interchange  
(Cty. Rt. 442)  
HDR HNTB May 2005





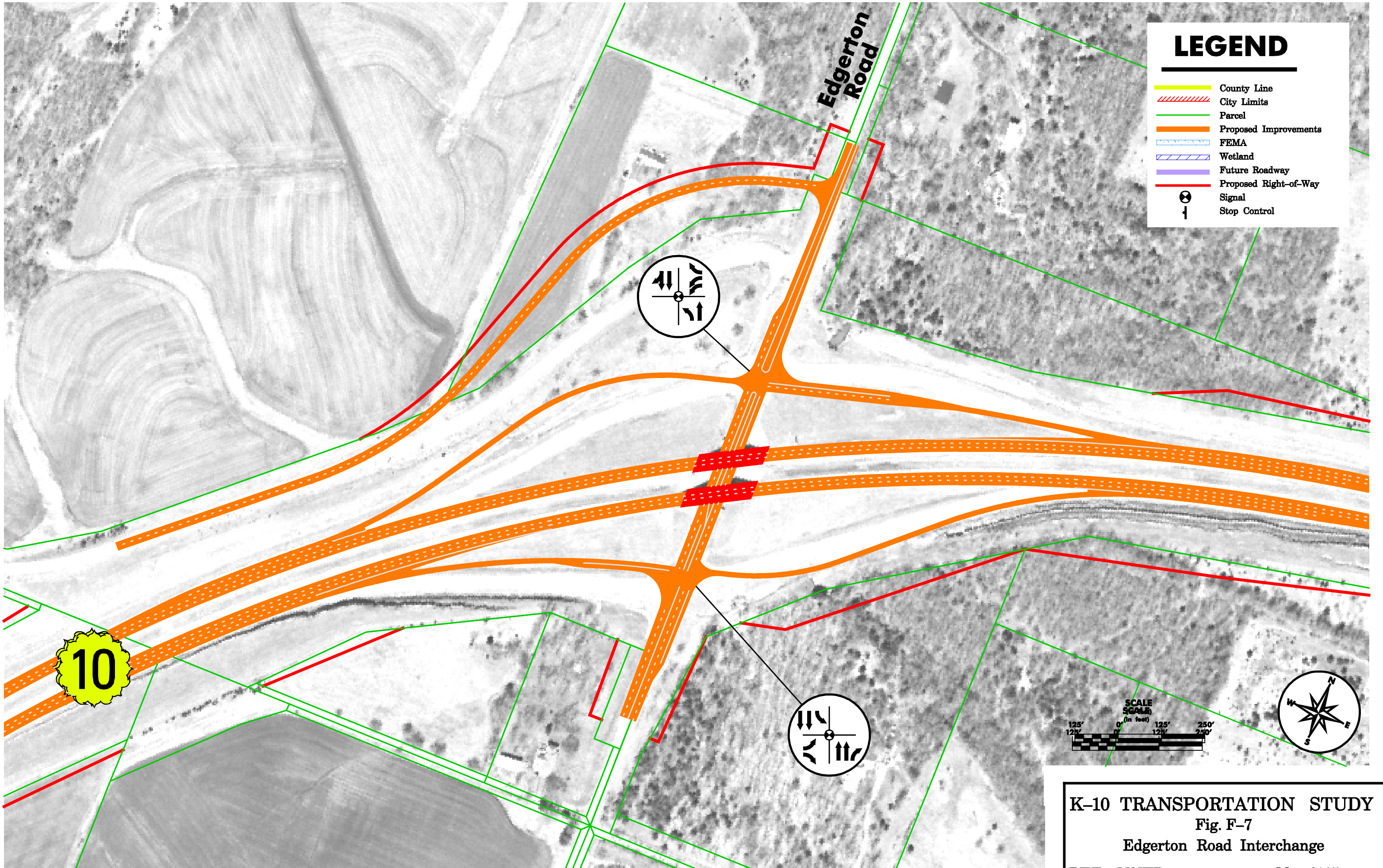
# LEGEND

-  County Line
-  City Limits
-  Parcel
-  Proposed Improvements
-  FEMA
-  Wetland
-  Future Roadway
-  Proposed Right-of-Way
-  Signal
-  Stop Control



**K-10 TRANSPORTATION STUDY**  
**Fig. F-6**  
**Evening Star Road Interchange**  
**HDR HNTB** May 2005



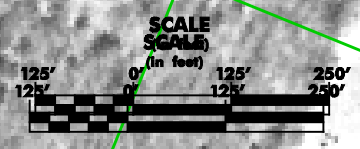


### LEGEND

- County Line
- City Limits
- Parcel
- Proposed Improvements
- FEMA
- Wetland
- Future Roadway
- Proposed Right-of-Way
- ⊗ Signal
- ⊥ Stop Control

Edgerton Road

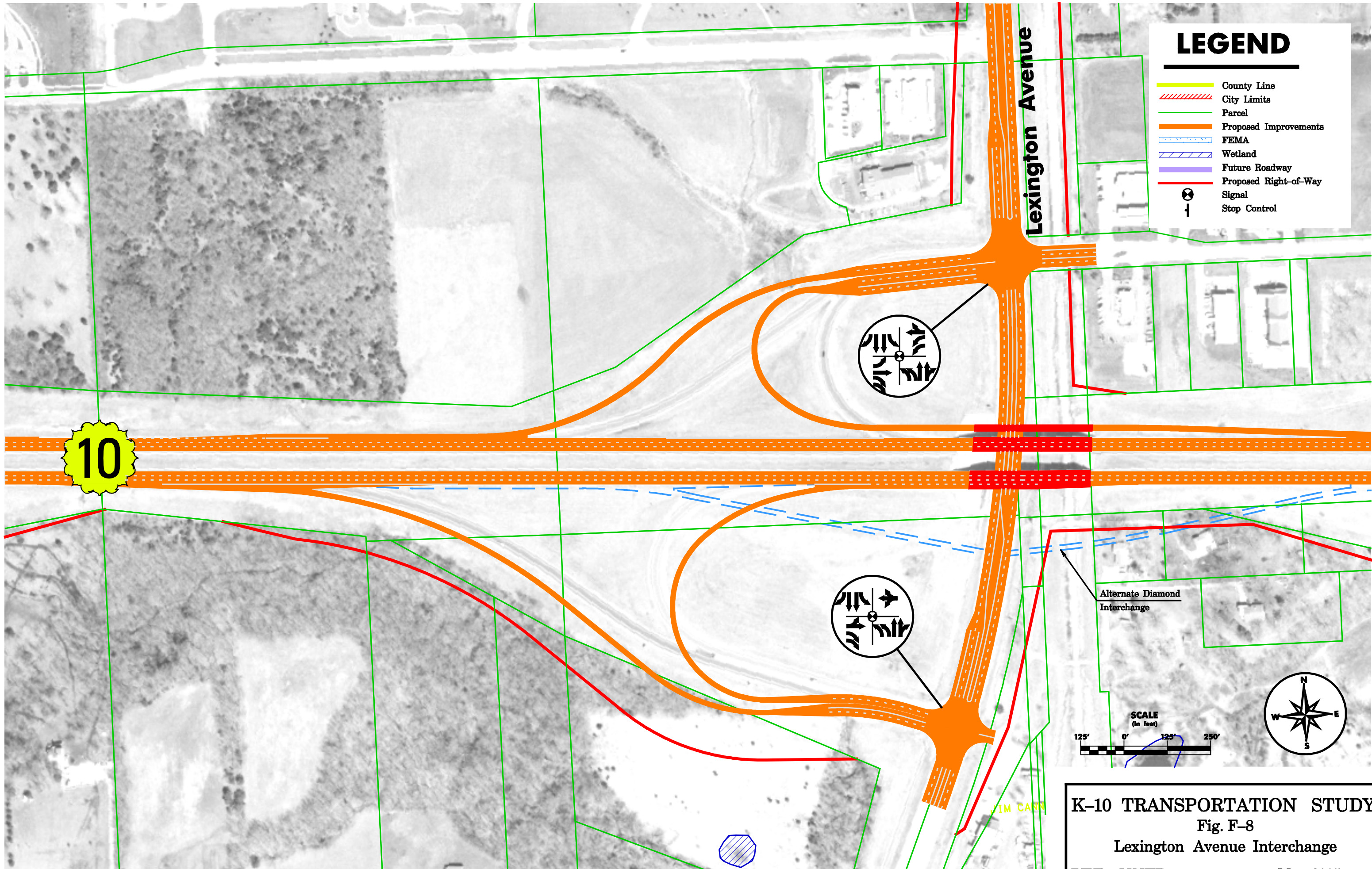
10













**K-10 TRANSPORTATION STUDY**  
 Fig. F-7  
 Edgerton Road Interchange

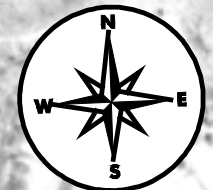
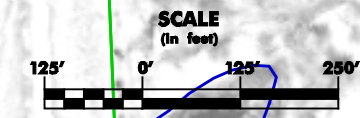
**HDR HNTB** May 2005





# LEGEND

-  County Line
-  City Limits
-  Parcel
-  Proposed Improvements
-  FEMA
-  Wetland
-  Future Roadway
-  Proposed Right-of-Way
-  Signal
-  Stop Control

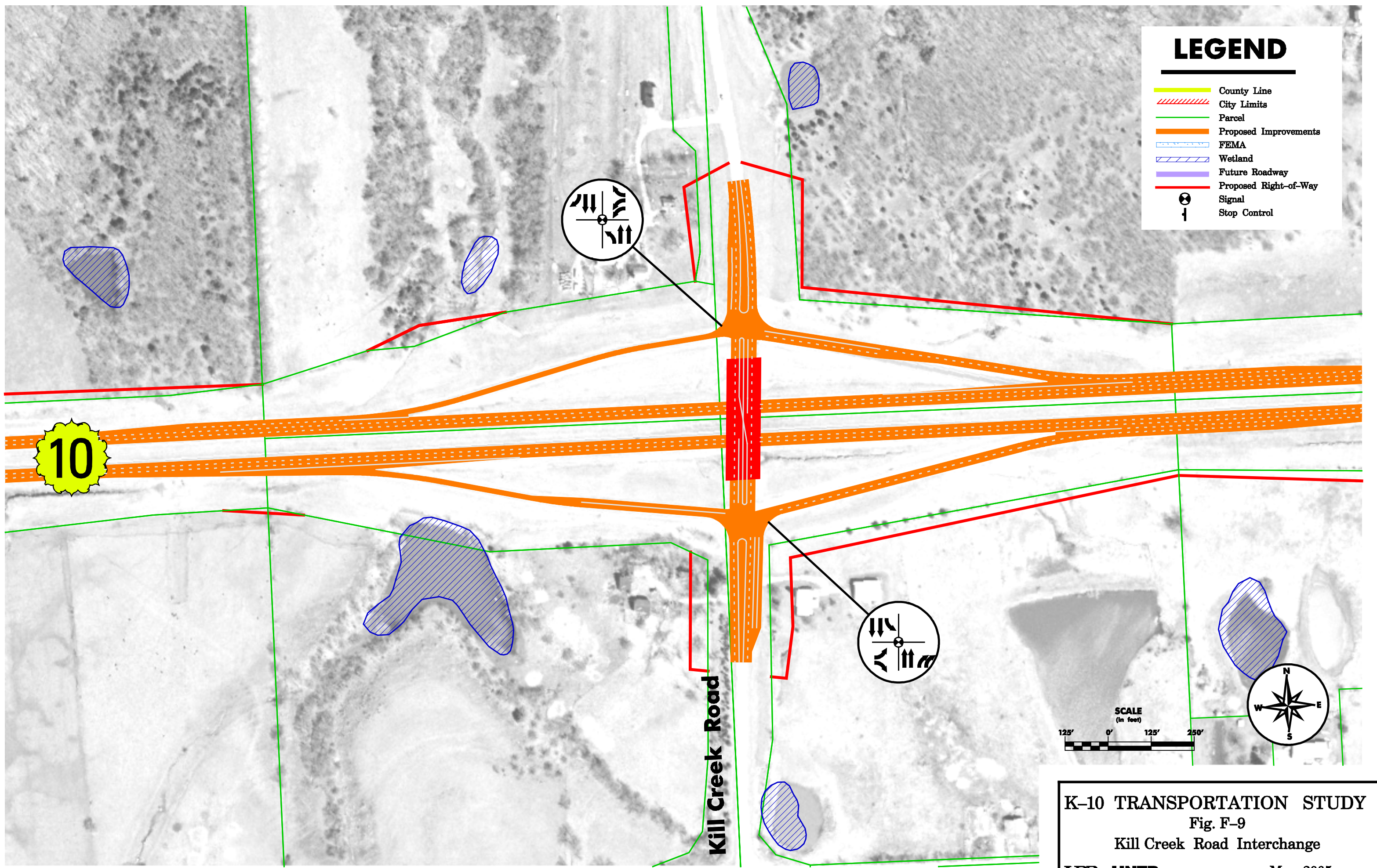


**K-10 TRANSPORTATION STUDY**  
**Fig. F-8**  
 Lexington Avenue Interchange  
**HDR HNTB** May 2005



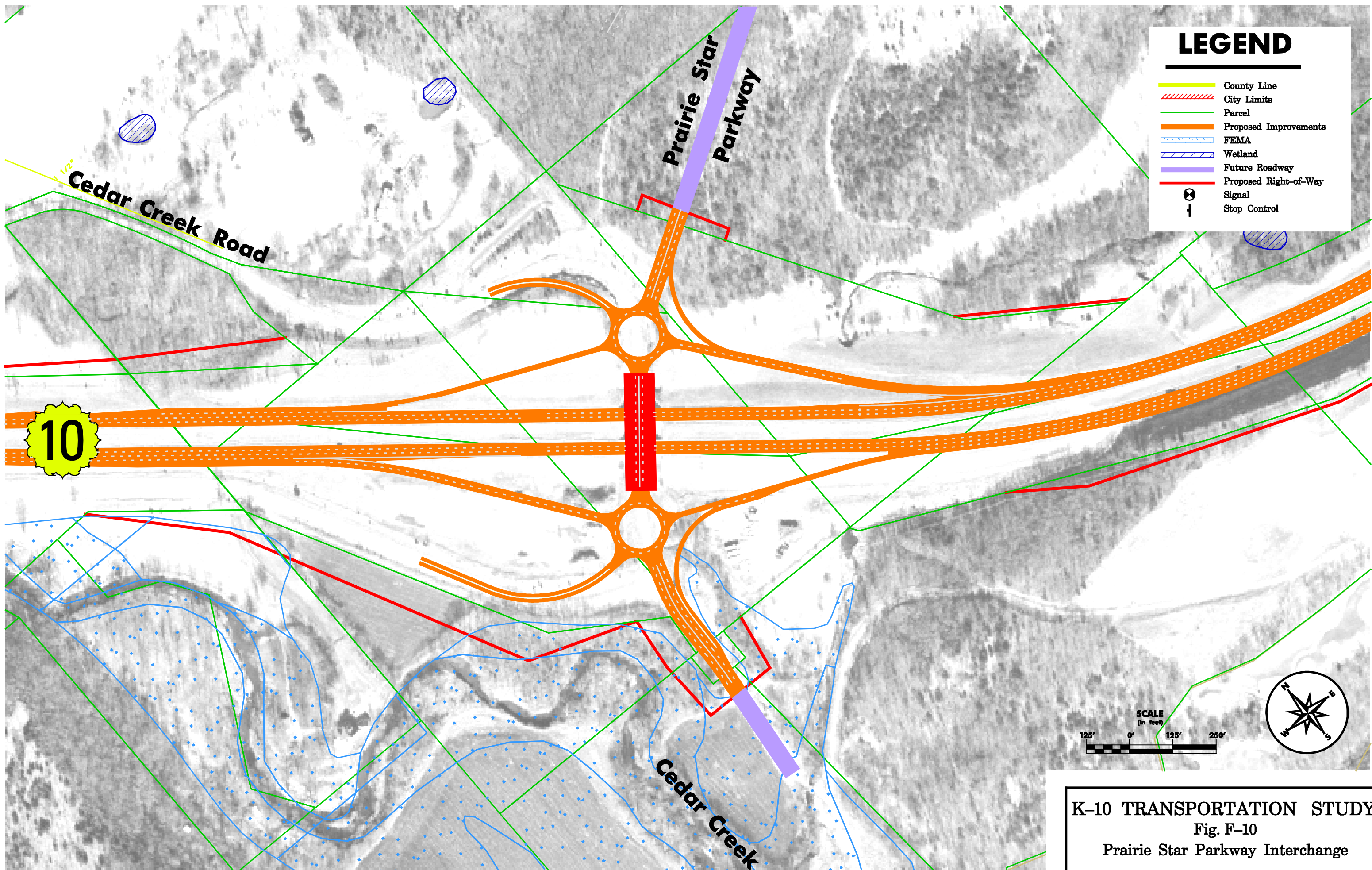
# LEGEND

- County Line
- City Limits
- Parcel
- Proposed Improvements
- FEMA
- Wetland
- Future Roadway
- Proposed Right-of-Way
- Signal
- Stop Control



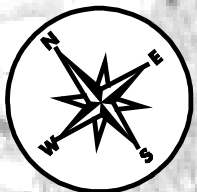
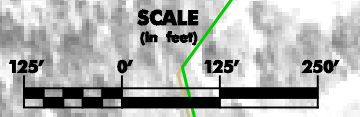
**K-10 TRANSPORTATION STUDY**  
**Fig. F-9**  
**Kill Creek Road Interchange**  
**HDR HNTB** May 2005





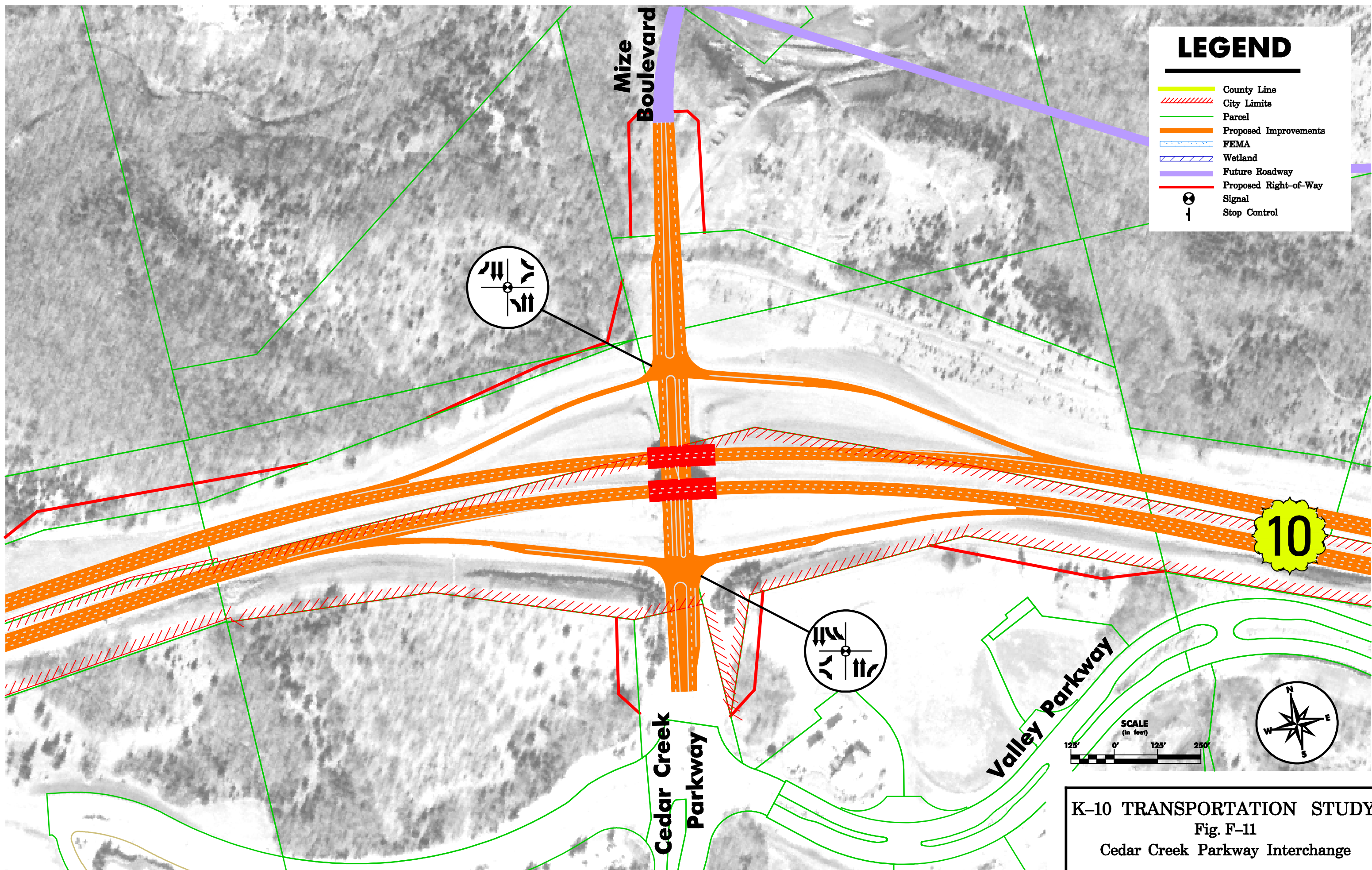
### LEGEND

- County Line
- City Limits
- Parcel
- Proposed Improvements
- FEMA
- Wetland
- Future Roadway
- Proposed Right-of-Way
- ⊗ Signal
- Stop Control



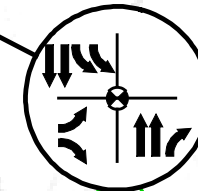
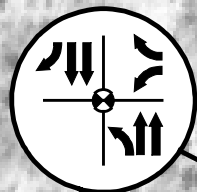
**K-10 TRANSPORTATION STUDY**  
 Fig. F-10  
 Prairie Star Parkway Interchange  
**HDR HNTB** May 2005



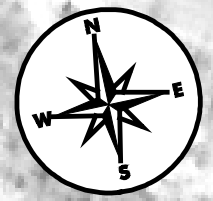
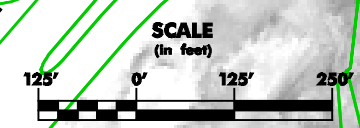


### LEGEND

- County Line
- City Limits
- Parcel
- Proposed Improvements
- FEMA
- Wetland
- Future Roadway
- Proposed Right-of-Way
- ⊗ Signal
- ⊥ Stop Control



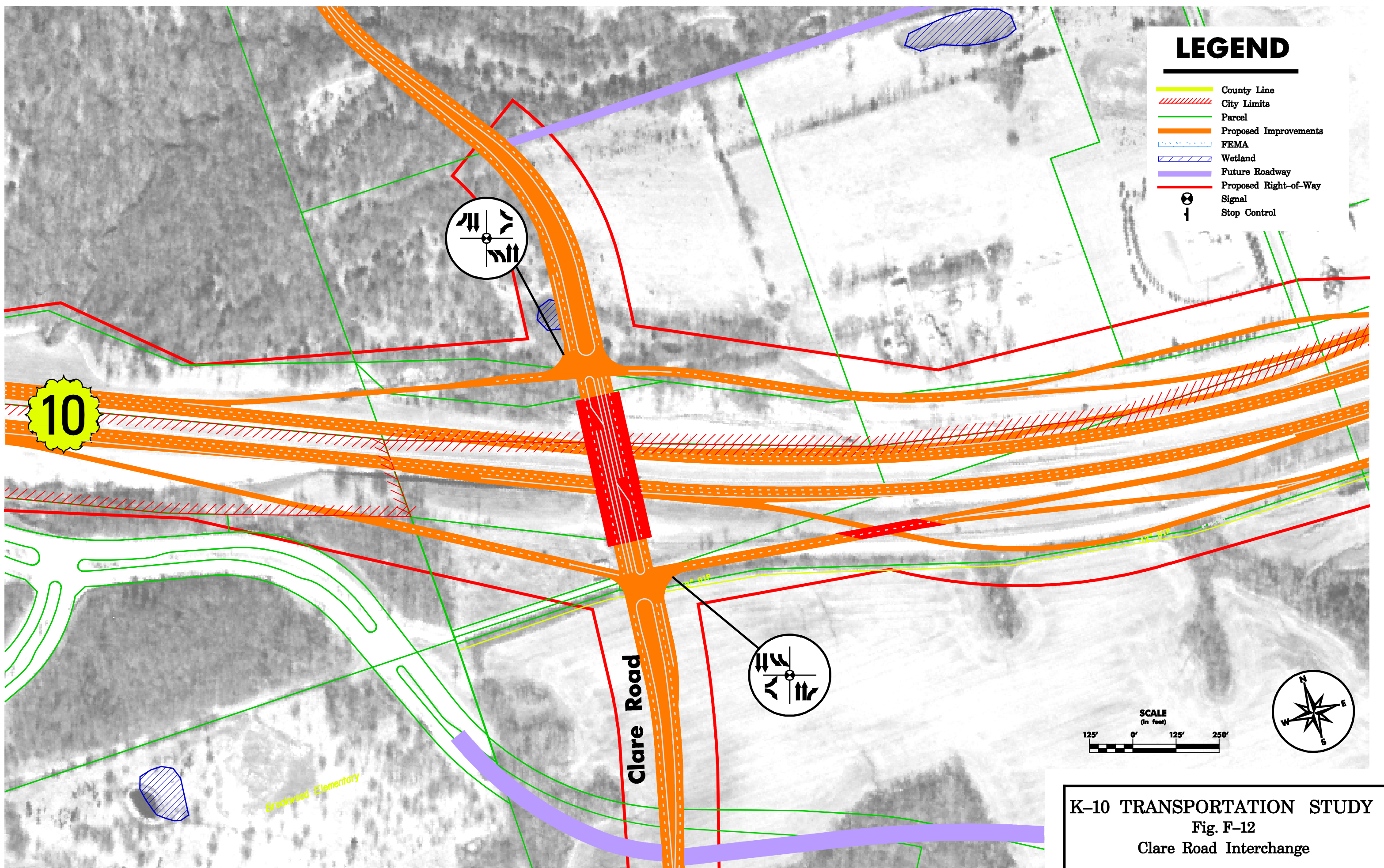
10



**K-10 TRANSPORTATION STUDY**  
 Fig. F-11  
 Cedar Creek Parkway Interchange  
**HDR HNTB** May 2005

# LEGEND

- County Line
- City Limits
- Parcel
- Proposed Improvements
- FEMA
- Wetland
- Future Roadway
- Proposed Right-of-Way
- Signal
- Stop Control

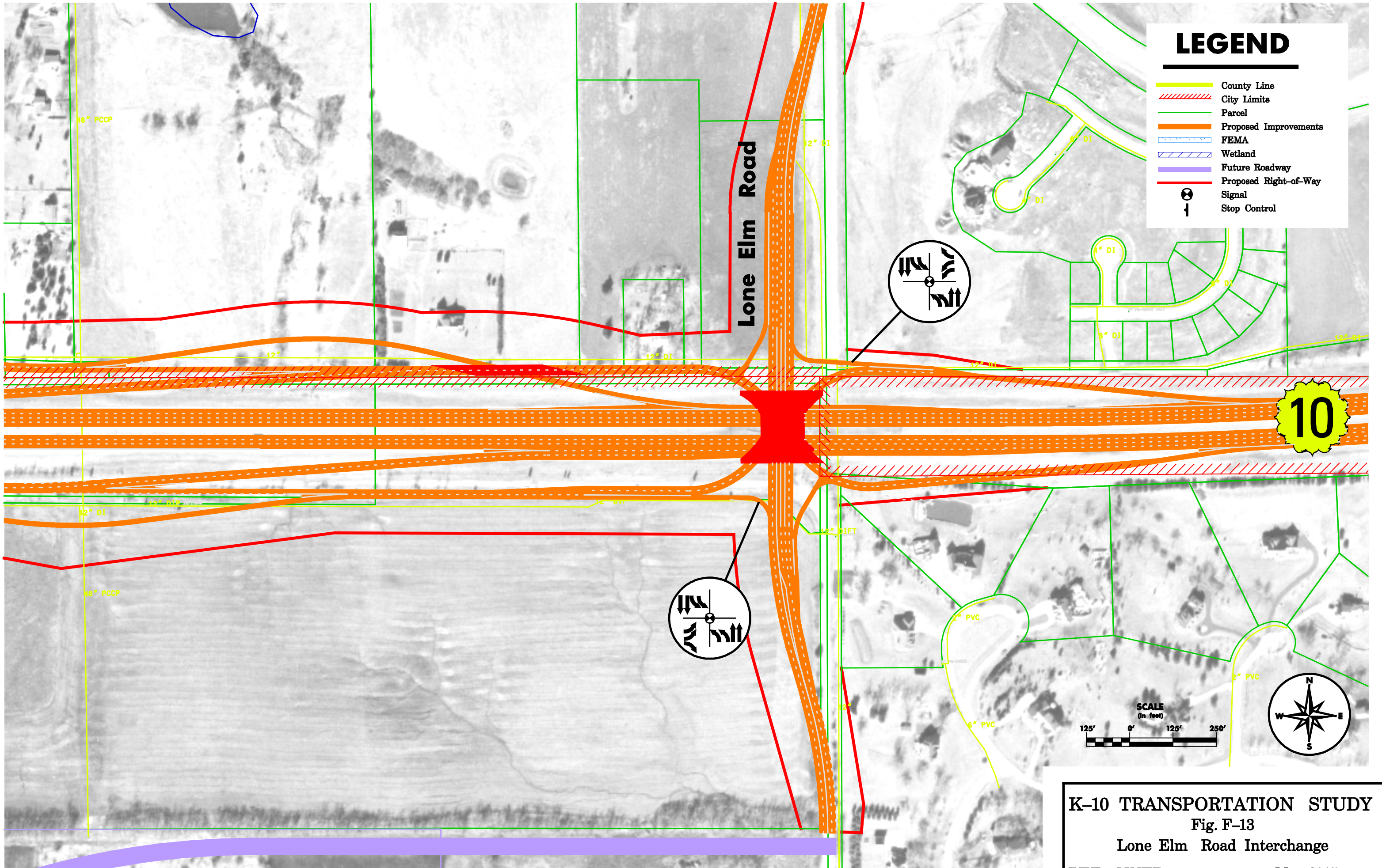


Clare Road

Brookwood Elementary

**K-10 TRANSPORTATION STUDY**  
Fig. F-12  
Clare Road Interchange  
HDR **HNTB** May 2005



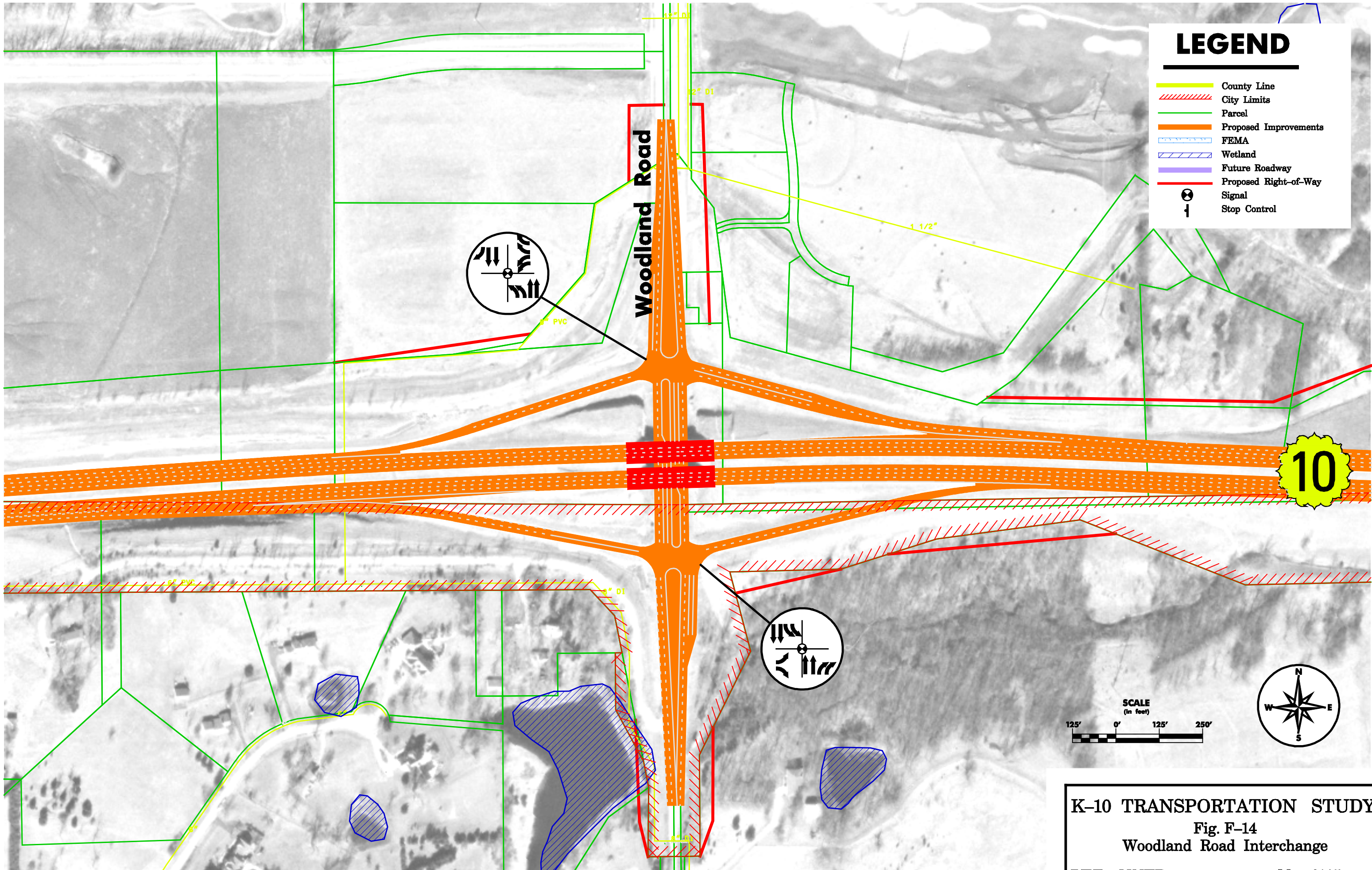


### LEGEND

- County Line
- City Limits
- Parcel
- Proposed Improvements
- FEMA
- Wetland
- Future Roadway
- Proposed Right-of-Way
- ⊗ Signal
- ⊥ Stop Control

**K-10 TRANSPORTATION STUDY**  
 Fig. F-13  
 Lone Elm Road Interchange  
**HDR HNTB** May 2005





### LEGEND

- County Line
- City Limits
- Parcel
- Proposed Improvements
- FEMA
- Wetland
- Future Roadway
- Proposed Right-of-Way
- ⊙ Signal
- ⊥ Stop Control

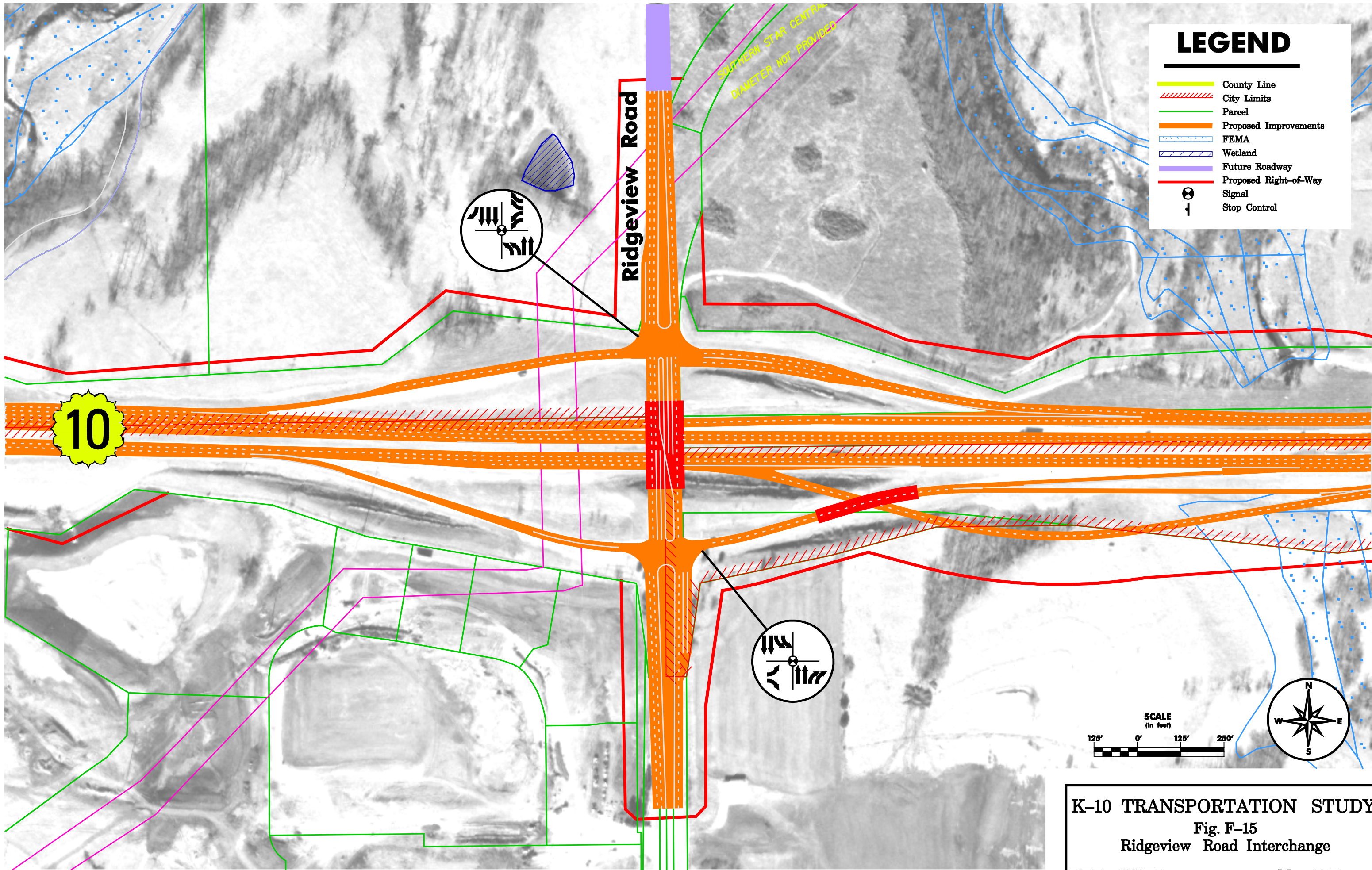
**SCALE**  
(in feet)

125'   0'   125'   250'

**K-10 TRANSPORTATION STUDY**  
 Fig. F-14  
 Woodland Road Interchange

**HDR HNTB** May 2005





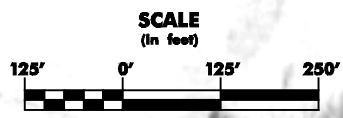
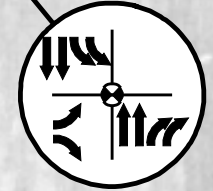
### LEGEND

- County Line
- City Limits
- Parcel
- Proposed Improvements
- FEMA
- Wetland
- Future Roadway
- Proposed Right-of-Way
- ⊗ Signal
- ┆ Stop Control

10

Ridgeview Road

SOUTHERN STAR CENTRAL  
DIAMETER NOT PROVIDED



K-10 TRANSPORTATION STUDY

Fig. F-15

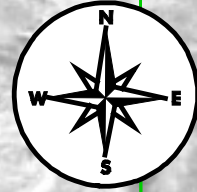
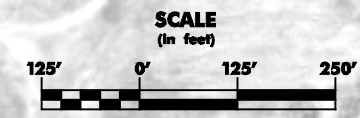
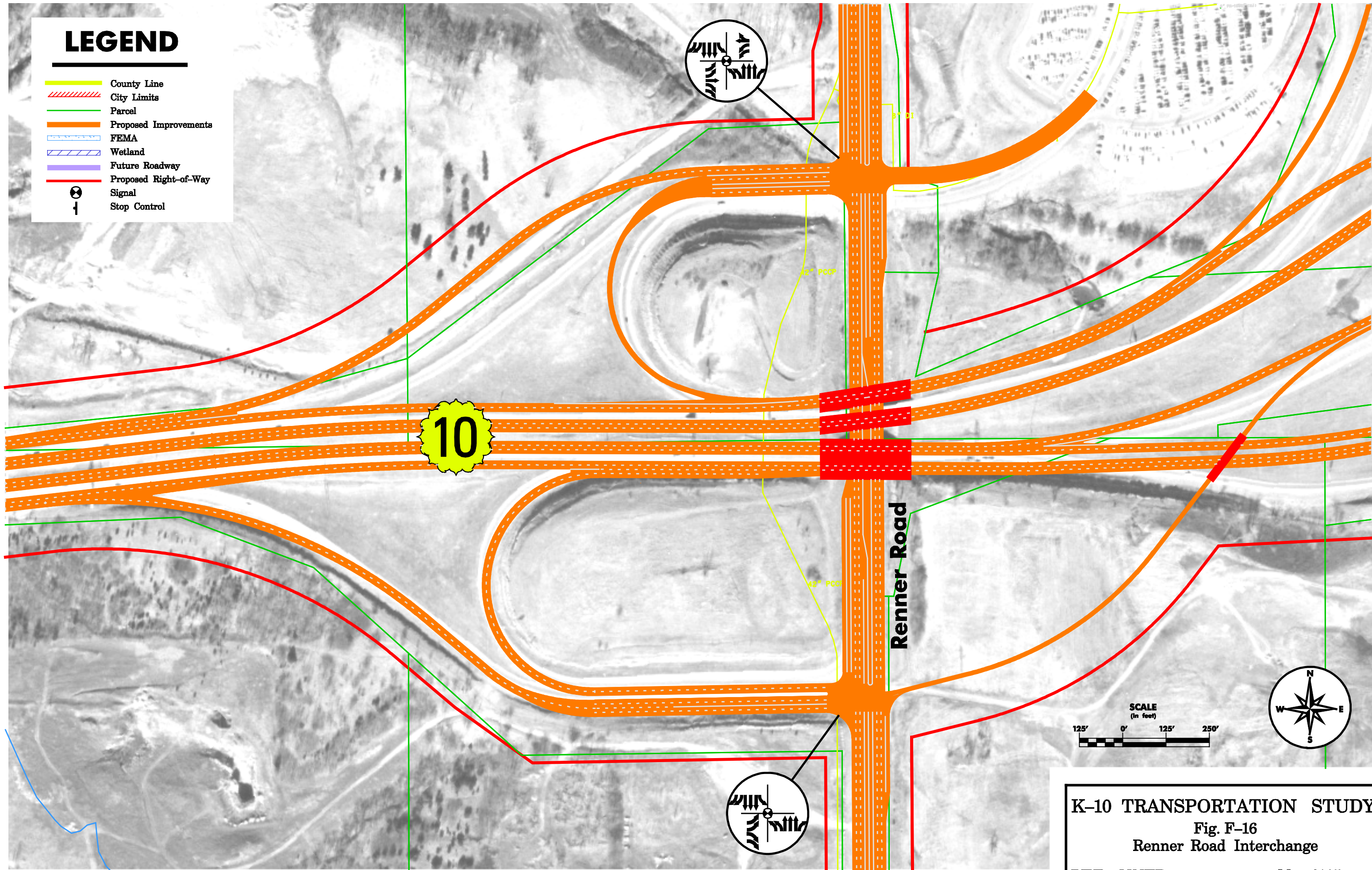
Ridgeview Road Interchange

HDR HNTB
May 2005



# LEGEND

- County Line
- City Limits
- Parcel
- Proposed Improvements
- FEMA
- Wetland
- Future Roadway
- Proposed Right-of-Way
- Signal
- Stop Control



K-10 TRANSPORTATION STUDY

Fig. F-16

Renner Road Interchange

HDR HNTB

May 2005