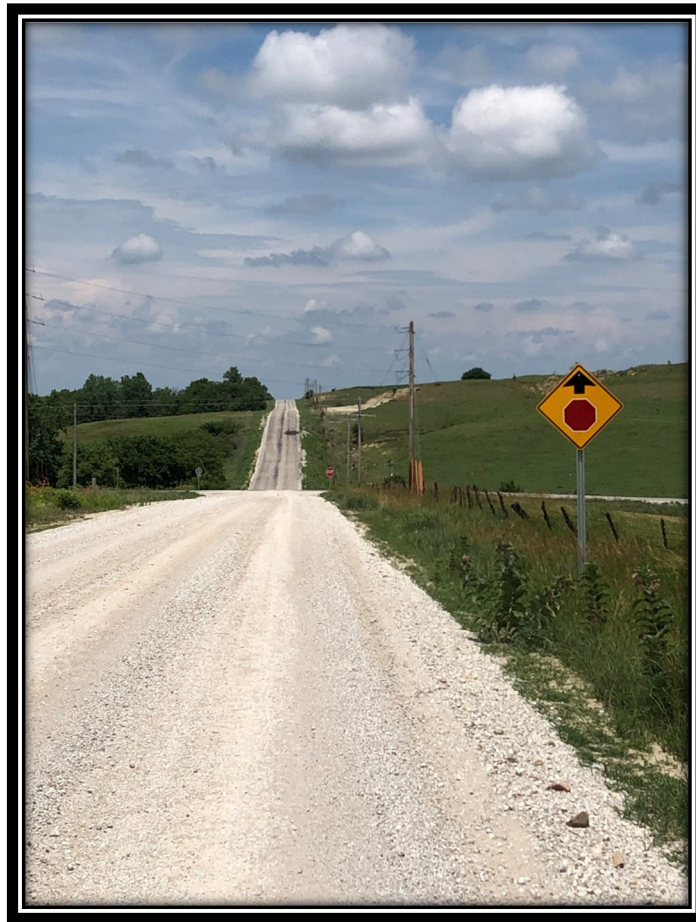


2022 SUMMARY OF COUNTY ENGINEERS' ANNUAL REPORTS



Compiled by
Kansas Department of Transportation
Bureau of Local Projects

CONTENTS

Title	Page
Foreword	2
Map of Kansas with KDOT Districts	3
County Road System Type - Statewide Totals	4
Summary of Road System Type by County	5
Map of Kansas Showing Counties by Road System Type	8
General Information	
Totals of All Reports Submitted	9
County Unit Counties	10
County Rural System Counties	12
County/Township Unit Counties	13
Per Capita Summary	
Totals of All Reports Submitted	14
County Unit Counties	15
County Rural System Counties	17
County/Township Unit Counties	18
Budget/Road Miles vs. Assessed Valuation	
Totals of All Reports Submitted	19
County Unit Counties	20
County Rural System Counties	22
County/Township Unit Counties	23
County Road Maintenance	
Totals of All Reports Submitted	24
County Unit Counties	25
County Rural System Counties	27
County/Township Unit Counties	28
County Construction Costs	
Totals of All Reports Submitted	29
County Unit Counties	30
County Rural System Counties	32
County/Township Unit Counties	33
Township Maintenance and Construction Costs -	
Totals of All Reports Submitted	34
Township Maintenance and Construction Costs -	
County/Township Unit Counties	35
Multi-Year Trends	
Number of Counties Submitting Report	36
Average Annual Budget - Geographic Location	37
Average Annual Budget - Population	38
Average No. of Road & Bridge Employees	39
Average Miles of Maintenance (Overlays/Seals)	40
Average Miles of County Road Constructed	41

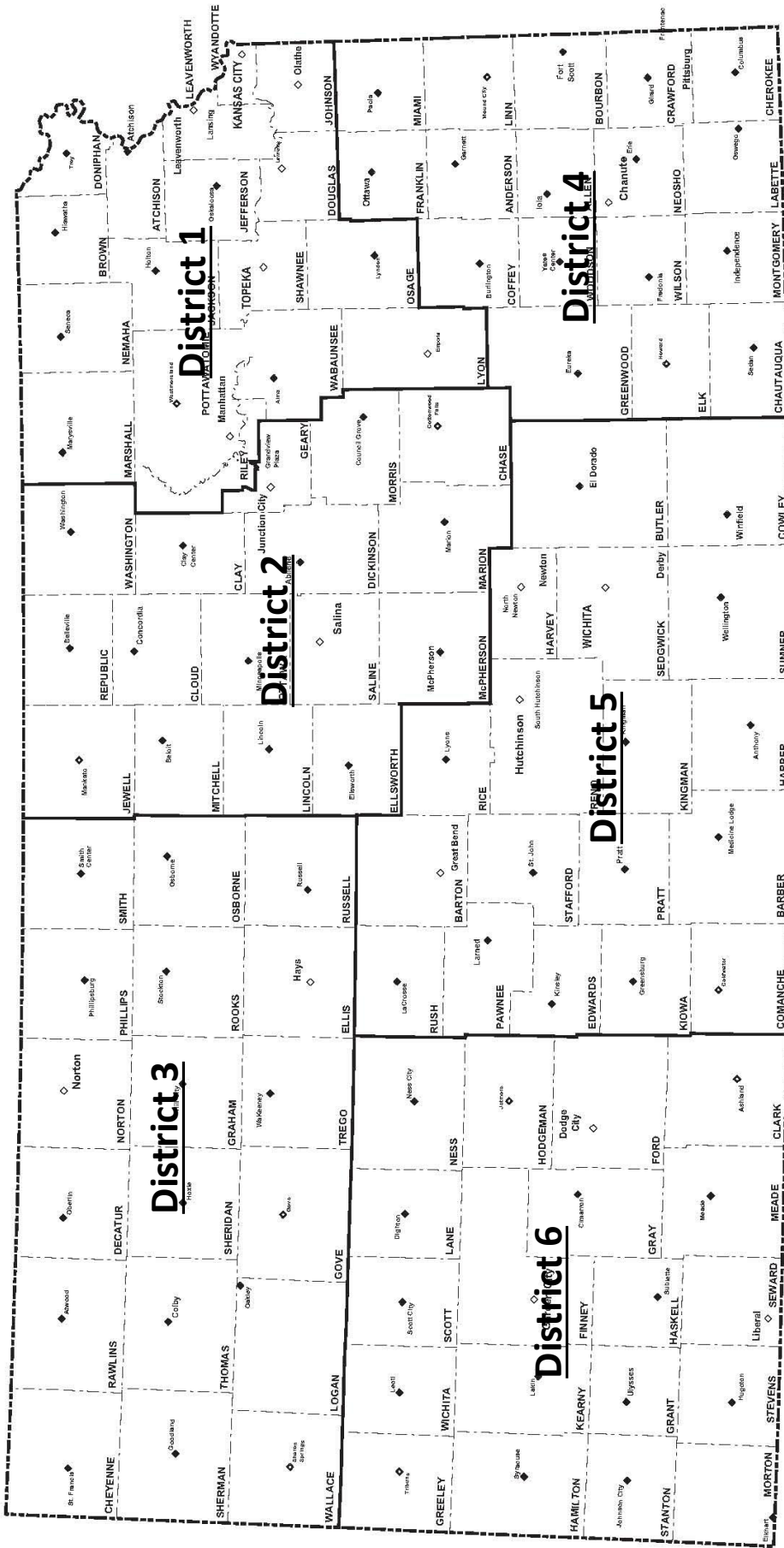
FOREWORD

This document summarizes the data reported by the counties in the 2022 County Engineers' Annual Report to the Secretary of Transportation in accordance with the statutory requirements.

Data has been summarized for all the counties that submitted a report. Both statewide aggregate and county-by-county numbers are shown for each category. In order that review and conclusions may be facilitated, the data received in the reports has been summarized separately for counties with the county unit road system, counties with the county rural road system, and counties with county/township unit road system.

This summary also includes the information on townships for the county/township unit counties. The township information is shown by county totals.

KANSAS



ROAD SYSTEM TYPE STATEWIDE TOTALS	
Number of Counties with County Unit Road System	66
Number of Counties with County Rural Road System	3
Number of Counties with County Township Road System	35
Other	1
Total	105

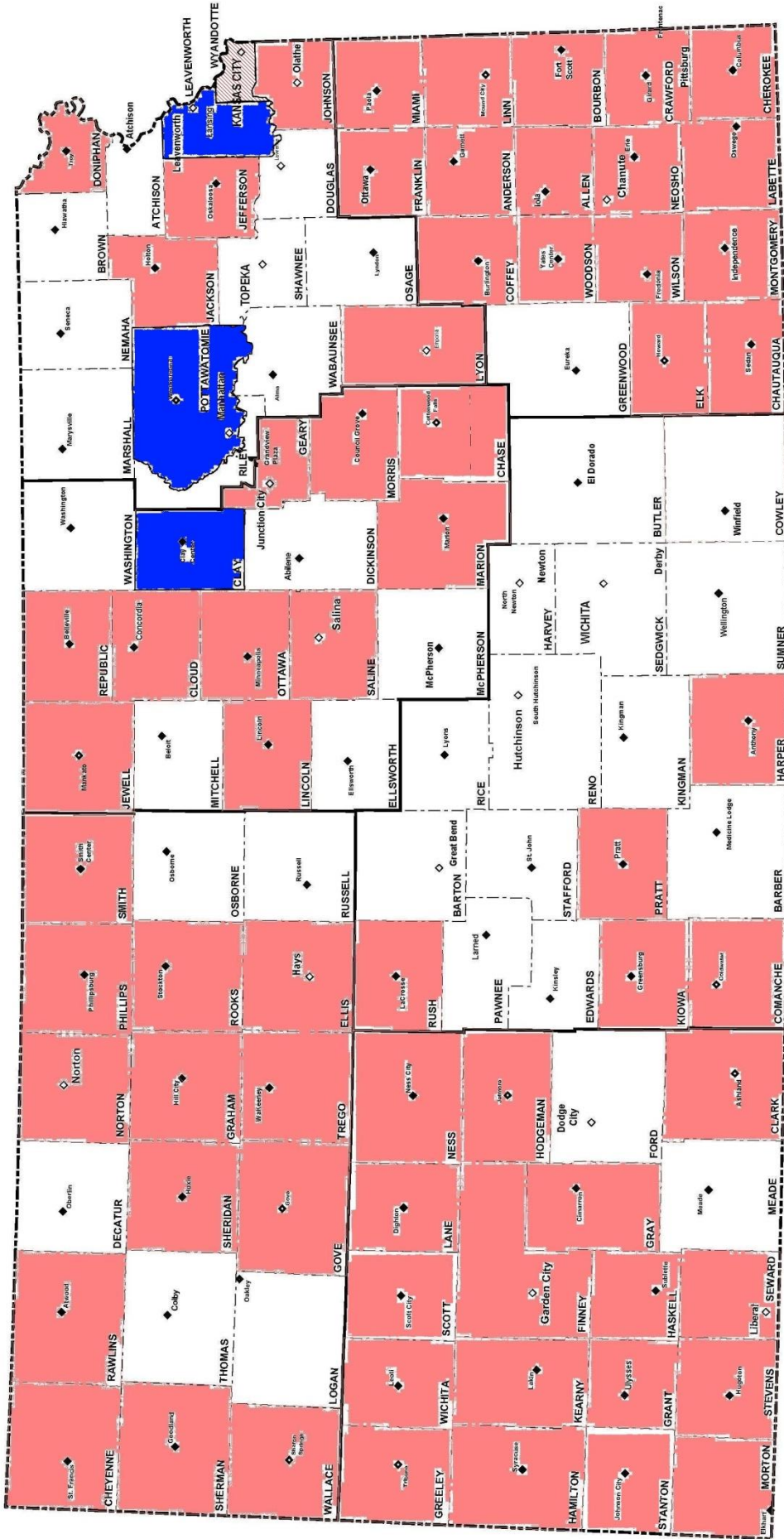
SUMMARY OF ROAD SYSTEM TYPE BY COUNTY			
COUNTY	COUNTY UNIT	COUNTY TOWNSHIP	COUNTY RURAL
Allen	X		
Anderson	X		
Atchison		X	
Barber		X	
Barton		X	
Bourbon	X		
Brown		X	
Butler		X	
Chase	X		
Chautauqua	X		
Cherokee	X		
Cheyenne	X		
Clark	X		
Clay			X
Cloud	X		
Coffey	X		
Comanche	X		
Cowley		X	
Crawford	X		
Decatur		X	
Dickinson		X	
Doniphan	X		
Douglas		X	
Edwards		X	
Elk	X		
Ellis	X		
Ellsworth		X	
Finney	X		
Ford		X	
Franklin	X		
Geary	X		
Gove	X		
Graham	X		
Grant	X		
Gray	X		

SUMMARY OF ROAD SYSTEM TYPE BY COUNTY			
COUNTY	COUNTY UNIT	COUNTY TOWNSHIP	COUNTY RURAL
Greeley	X		
Greenwood		X	
Hamilton	X		
Harper	X		
Harvey		X	
Haskell	X		
Hodgeman	X		
Jackson	X		
Jefferson	X		
Jewell	X		
Johnson	X		
Kearny	X		
Kingman		X	
Kiowa	X		
Labette	X		
Lane	X		
Leavenworth			X
Lincoln	X		
Linn	X		
Logan		X	
Lyon	X		
Marion	X		
Marshall		X	
McPherson		X	
Meade		X	
Miami	X		
Mitchell		X	
Montgomery	X		
Morris	X		
Morton	X		
Nemaha		X	
Neosho	X		
Ness	X		
Norton	X		
Osage		X	
Osborne		X	

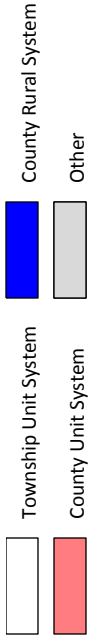
SUMMARY OF ROAD SYSTEM TYPE BY COUNTY			
COUNTY	COUNTY UNIT	COUNTY TOWNSHIP	COUNTY RURAL
Ottawa	X		
Pawnee		X	
Phillips	X		
Pottawatomie			X
Pratt	X		
Rawlins	X		
Reno		X	
Republic	X		
Rice		X	
Riley		X	
Rooks	X		
Rush	X		
Russell		X	
Saline	X		
Scott	X		
Sedgwick		X	
Seward	X		
Shawnee		X	
Sheridan	X		
Sherman	X		
Smith	X		
Stafford		X	
Stanton	X		
Stevens	X		
Sumner		X	
Thomas		X	
Trego	X		
Wabaunsee		X	
Wallace	X		
Washington		X	
Wichita	X		
Wilson	X		
Woodson	X		
Wyandotte		Other	

KANSAS

00



SOURCE: U.S. CENSUS BUREAU - 2000



**GENERAL INFORMATION
2022 COUNTY ENGINEERS' REPORT
TOTALS OF ALL REPORTS SUBMITTED**

Item	County Unit	County Rural	County Township	State-Wide Totals
Number of Counties Reporting	66	3	35	104
Annual Road & Bridge Operating Budget	\$247,869,518	\$38,061,503	\$200,887,474	\$486,818,495
Number of Road & Bridge Employees	1,591	136	839	2,566
Miles of County Maintained Roads				
Miles of Concrete Roads	48	24	66	138
Miles of Asphalt Roads	6,326	705	6,833	13,864
Miles of Gravel Roads	47,788	1712	4,871	54,371
Miles of Earth Roads	13,089	539	665	14,293
Total Miles of County Maintained Roads	67,251	2,980	12,435	82,666

GENERAL INFORMATION
2022 COUNTY ENGINEERS' REPORT
COUNTY UNIT COUNTIES

COUNTY	ANNUAL BUDGET	NUMBER OF EMPLOYEES	COUNTY MAINTAINED ROADS (MILES)				
			CONC. ROADS	ASPHALT ROADS	GRAVEL ROADS	EARTH ROADS	TOTAL MILES
Allen	\$4,877,457	28	3	183	817	0	1,003
Anderson	\$4,160,400	22	0	103	937	16	1,056
Bourbon	\$3,590,240	36	0	150	804	46	1,000
Chase	\$2,064,400	11	1	20	462	42	525
Chautauqua	\$1,446,205	18	3	8	642	44	697
Cherokee	\$3,669,250	38	0	301	1,000	0	1,301
Cheyenne	\$1,716,092	14	0	14	825	215	1,054
Clark	\$988,042	11	0	7	572	45	624
Cloud	\$4,202,980	36	0	133	640	420	1,193
Coffey	\$10,135,388	49	0	230	960	10	1,200
Comanche	\$1,597,000	8	0	22	578	50	650
Crawford	\$5,020,902	44	0	189	818	0	1,007
Doniphan	\$3,444,122	12	4	73	391	150	618
Elk	\$1,934,352	13	0	21	728	0	749
Ellis	\$5,064,122	41	7	141	1,139	54	1,341
Finney	\$4,990,822	28	2	232	992	0	1,226
Franklin	\$6,503,904	34	0	206	818	0	1,024
Geary	\$4,662,896	24	0	117	240	4	361
Gove	\$3,368,394	16	0	14	802	274	1,090
Graham	\$1,900,000	25	0	0	636	501	1,137
Grant	\$2,469,770	21	0	154	633	0	787
Gray	\$4,055,000	17	0	85	1,157	0	1,242
Greeley	\$883,967	9	0	4	600	50	654
Hamilton	\$1,046,124	8	0	14	766	0	780
Harper	\$2,515,912	27	0	84	828	459	1,371
Haskell	\$3,794,612	13	0	118	519	0	637
Hodgeman	\$1,331,030	15	0	5	832	220	1,057
Jackson	\$4,940,327	28	0	72	751	176	999
Jefferson	\$7,311,720	43	0	157	671	37	865
Jewell	\$2,808,485	28	0	21	695	795	1,511
Johnson	\$16,568,538	61	1	254	136	0	391
Kearney	\$1,701,561	12	0	118	571	8	697
Kiowa	\$4,383,203	16	0	83	399	297	779
Labette	\$5,475,427	33	0	163	971	22	1,156
Lane	\$915,888	14	0	3	463	131	597
Lincoln	\$2,150,172	18	0	37	563	421	1,021
Linn	\$4,801,450	31	0	200	727	34	961
Lyon	\$8,320,227	56	5	127	1,158	138	1,428
Marion	\$6,926,841	26	0	180	800	600	1,580
Miami	\$9,511,448	42	0	335	763	34	1,132
Montgomery	\$8,553,935	46	0	319	696	48	1,063
Morris	\$4,675,792	18	0	99	820	201	1,120
Morton	\$1,162,239	12	0	94	459	38	591
Neosho	\$2,666,142	30	3	118	832	5	958
Ness	\$2,448,447	19	0	0	1,162	88	1,250
Norton	\$1,679,450	20	0	22	625	712	1,359

GENERAL INFORMATION
2022 COUNTY ENGINEERS' REPORT
COUNTY UNIT COUNTIES

COUNTY	ANNUAL BUDGET	NUMBER OF EMPLOYEES	COUNTY MAINTAINED ROADS (MILES)				
			CONC. ROADS	ASPHALT ROADS	GRAVEL ROADS	EARTH ROADS	TOTAL MILES
Ottawa	\$3,807,764	24	15	85	587	446	1,133
Phillips	\$2,511,490	22	1	74	622	537	1,234
Pratt	\$4,715,757	34	0	147	1,264	0	1,411
Rawlins	\$1,715,561	15	0	15	900	600	1,515
Republic	\$3,904,953	25	2	82	704	484	1,272
Rooks	\$1,850,000	30	0	45	859	429	1,333
Rush	\$2,657,245	22	0	42	728	445	1,215
Saline	\$11,314,000	48	0	175	715	194	1,084
Scott	\$1,585,083	12	0	26	364	330	720
Seward	\$2,576,248	16	0	137	446	100	683
Sheridan	\$3,774,770	16	0	4	735	465	1,204
Sherman	\$2,026,700	21	1	43	322	907	1,273
Smith	\$3,632,704	21	0	1	710	1,261	1,972
Stanton	\$172,300	10	0	95	635	0	730
Stevens	\$2,558,566	18	0	148	787	0	935
Trego	\$1,712,372	26	0	0	792	300	1,092
Wallace	\$2,303,230	10	0	17	553	90	660
Wichita	\$1,739,399	15	0	16	917	2	935
Wilson	\$2,809,640	22	0	125	1,075	50	1,250
Woodson	\$2,067,060	13	0	19	675	64	758
Totals	\$247,869,518	1,591	48	6,326	47,788	13,089	67,251

GENERAL INFORMATION
2022 COUNTY ENGINEERS' REPORT
COUNTY RURAL COUNTIES

COUNTY	ANNUAL BUDGET	NUMBER OF EMPLOYEES	COUNTY MAINTAINED ROADS (MILES)				
			CONC. ROADS	ASPHALT ROADS	GRAVEL ROADS	EARTH ROADS	TOTAL MILES
Clay	\$4,868,110	24	0	175	510	355	1,040
Leavenworth	\$22,064,000	64	0	338	389	17	744
Pottawatomie	\$11,129,393	48	24	192	813	167	1,196
Totals	\$38,061,503	136	24	705	1712	539	2,980

GENERAL INFORMATION
2022 COUNTY ENGINEERS' REPORT
COUNTY TOWNSHIP COUNTIES

COUNTY	ANNUAL BUDGET	NUMBER OF EMPLOYEES	COUNTY MAINTAINED ROADS (MILES)				
			CONC. ROADS	ASPHALT ROADS	GRAVEL ROADS	EARTH ROADS	TOTAL MILES
Atchison	\$4,517,869	19	0	134	156	0	290
Barber	\$3,352,888	14	0	137	103	0	240
Barton	\$5,742,809	21	0	389	1	0	390
Brown	\$3,800,000	9	0	276	0	0	276
Butler	\$11,216,220	42	0	357	49	0	406
Cowley	\$5,014,329	24	2	307	42	0	351
Decatur	\$1,719,681	11	0	1	230	0	231
Dickinson	\$6,591,651	17	1	205	108	0	314
Douglas	\$9,837,950	50	5	193	34	0	232
Edwards	\$1,373,189	14	0	124	94	0	218
Ellsworth	\$2,833,201	17	0	77	172	0	249
Ford	\$4,844,738	23	0	228	162	0	390
Greenwood	\$2,411,046	21	0	36	397	0	433
Harvey	\$4,884,957	14	0	165	74	0	239
Kingman	\$4,381,552	12	0	249	5	0	254
Logan	\$1,354,235	9	0	12	215	665	892
Marshall	\$4,474,463	23	0	52	286	0	338
McPherson	\$7,336,954	38	15	299	40	0	354
Meade	\$1,961,567	12	1	101	162	0	264
Mitchell	\$3,326,020	17	0	130	128	0	258
Nemaha	\$3,726,500	18	0	97	241	0	338
Osage	\$3,302,099	16	0	85	164	0	249
Osborne	\$1,253,997	19	0	10	220	0	230
Pawnee	\$2,647,669	14	0	75	185	0	260
Reno	\$11,333,409	47	0	541	0	0	541
Rice	\$7,276,670	12	1	159	157	0	317
Riley	\$8,034,891	41	8	130	111	0	249
Russell	\$3,654,773	21	26	144	250	0	420
Sedgwick	\$31,342,695	98	3	561	39	0	603
Shawnee	\$13,156,321	47	0	287	1	0	288
Stafford	\$2,649,395	16	0	210	42	0	252
Sumner	\$12,646,508	43	4	171	223	0	398
Thomas	\$2,235,402	12	0	118	114	0	232
Wabaunsee	\$2,934,600	11	0	67	162	0	229
Washington	\$3,717,227	17	0	706	504	0	1210
Totals	\$200,887,474	839	66	6,833	4871	665	12,435

**PER CAPITA SUMMARY
2022 COUNTY ENGINEERS' REPORT
TOTALS OF ALL REPORTS SUBMITTED**

Item	County Unit	County Rural Unit	County Township Unit	State-Wide Totals
Number of Counties Reporting	66	3	35	104
Average Population	19,147	38,331.00	39,139.37	26,428
Annual Road & Bridge Operating Budget	\$247,869,518	\$38,061,503	\$200,887,474	\$486,818,495
Per Capita Road & Bridge Spending	\$196	\$331	\$147	\$177
Miles of County Maintained Roads	67,251	2,980	12,435	82,666
Population per Mile of Road	19	39	110	33

**PER CAPITA SUMMARY
2022 COUNTY ENGINEERS' REPORT
COUNTY UNIT COUNTIES**

COUNTY	POPULATION	ANNUAL BUDGET	PER CAPITA SPENDING	MILES OF ROAD	POPULATION PER MILES OF ROAD
Allen	12,399	\$4,877,457	\$393	1,003	12
Anderson	7,949	\$4,160,400	\$523	1,056	8
Bourbon	14,435	\$3,590,240	\$249	1,000	14
Chase	2,596	\$2,064,400	\$795	525	5
Chautauqua	3,230	\$1,446,205	\$448	697	5
Cherokee	19,681	\$3,669,250	\$186	1,301	15
Cheyenne	2,600	\$1,716,092	\$660	1,054	2
Clark	1,963	\$988,042	\$503	624	3
Cloud	8,642	\$4,202,980	\$486	1,193	7
Coffey	8,158	\$10,135,388	\$1,242	1,200	7
Comanche	1,690	\$1,597,000	\$945	650	3
Crawford	38,730	\$5,020,902	\$130	1,007	38
Doniphan	7,496	\$3,444,122	\$459	618	12
Elk	2,507	\$1,934,352	\$772	749	3
Ellis	28,671	\$5,064,122	\$177	1,341	21
Finney	35,917	\$4,990,822	\$139	1,226	29
Franklin	25,703	\$6,503,904	\$253	1,024	25
Gearry	32,218	\$4,662,896	\$145	361	89
Gove	2,621	\$3,368,394	\$1,285	1,090	2
Graham	2,389	\$1,900,000	\$795	1,137	2
Grant	7,077	\$2,469,770	\$349	787	9
Gray	5,954	\$4,055,000	\$681	1,242	5
Greeley	1,196	\$883,967	\$739	654	2
Hamilton	2,425	\$1,046,124	\$431	780	3
Harper	5,336	\$2,515,912	\$471	1,371	4
Haskell	3,923	\$3,794,612	\$967	637	6
Hodgeman	1,779	\$1,331,030	\$748	1,057	2
Jackson	13,171	\$4,940,327	\$375	999	13
Jefferson	19,032	\$7,311,720	\$384	865	22
Jewell	2,833	\$2,808,485	\$991	1,511	2
Johnson	607,224	\$16,568,538	\$27	391	1,553
Kearney	3,745	\$1,701,561	\$454	697	5
Kiowa	2,456	\$4,383,203	\$1,785	779	3
Labette	19,586	\$5,475,427	\$280	1,156	17

**PER CAPITA SUMMARY
2022 COUNTY ENGINEERS' REPORT
COUNTY UNIT COUNTIES**

COUNTY	POPULATION	ANNUAL BUDGET	PER CAPITA SPENDING	MILES OF ROAD	POPULATION PER MILES OF ROAD
Lane	1,518	\$915,888	\$603	597	3
Lincoln	2,986	\$2,150,172	\$720	1,021	3
Linn	9,654	\$4,801,450	\$497	961	10
Lyon	33,045	\$8,320,227	\$252	1,428	23
Marion	11,652	\$6,926,841	\$594	1,580	7
Miami	34,334	\$9,511,448	\$277	1,132	30
Montgomery	31,502	\$8,553,935	\$272	1,063	30
Morris	5,559	\$4,675,792	\$841	1,120	5
Morton	2,538	\$1,162,239	\$458	591	4
Neosho	15,929	\$2,666,142	\$167	958	17
Ness	2,768	\$2,448,447	\$885	1,250	2
Norton	5,328	\$1,679,450	\$315	1,359	4
Ottawa	5,712	\$3,807,764	\$667	1,133	5
Phillips	5,181	\$2,511,490	\$485	1,234	4
Pratt	9,127	\$4,715,757	\$517	1,411	6
Rawlins	2,511	\$1,715,561	\$683	1,515	2
Republic	4,536	\$3,904,953	\$861	1,272	4
Rooks	4,827	\$1,850,000	\$383	1,333	4
Rush	2,947	\$2,657,245	\$902	1,215	2
Saline	53,926	\$11,314,000	\$210	1,084	50
Scott	4,790	\$1,585,083	\$331	720	7
Seward	21,038	\$2,576,248	\$122	683	31
Sheridan	2,520	\$3,774,770	\$1,498	1,204	2
Sherman	5,777	\$2,026,700	\$351	1,273	5
Smith	3,544	\$3,632,704	\$1,025	1,972	2
Stanton	1,969	\$172,300	\$88	730	3
Stevens	5,388	\$2,558,566	\$475	935	6
Trego	2,758	\$1,712,372	\$621	1,092	3
Wallace	1,536	\$2,303,230	\$1,499	660	2
Wichita	2,074	\$1,739,399	\$839	935	2
Wilson	8,362	\$2,809,640	\$336	1,250	7
Woodson	3,015	\$2,067,060	\$686	758	4
TB	1,263,683	\$247,869,518	\$196	67,251	19

**PER CAPITA SUMMARY
2022 COUNTY ENGINEERS' REPORT
COUNTY RURAL SYSTEM COUNTIES**

COUNTY	POPULATION	ANNUAL BUDGET	PER CAPITA SPENDING	MILES OF ROAD	POPULATION PER MILE OF ROAD
Clay	8,025	\$4,868,110	\$607	1,040	8
Leavenworth	82,246	\$22,064,000	\$268	744	111
Pottawatomie	24,722	\$11,129,393	\$450	1,196	21
Totals	114,993	\$38,061,503	\$330.99	2,980	39

**PER CAPITA SUMMARY
2022 COUNTY ENGINEERS' REPORT
COUNTY TOWNSHIP COUNTIES**

COUNTY	POPULATION	ANNUAL BUDGET	PER CAPITA SPENDING	MILES OF ROAD	POPULATION PER MILE OF
Atchison	16,015	\$4,517,869	\$282	290	55
Barber	4,358	\$3,352,888	\$769	240	18
Barton	25,658	\$5,742,809	\$224	390	66
Brown	9,482	\$3,800,000	\$401	276	34
Butler	66,992	\$11,216,220	\$167	406	165
Cowley	34,628	\$5,014,329	\$145	351	99
Decatur	2,776	\$1,719,681	\$619	231	12
Dickinson	18,266	\$6,591,651	\$361	314	58
Douglas	122,530	\$9,837,950	\$80	232	528
Edwards	2,750	\$1,373,189	\$499	218	13
Ellsworth	6,034	\$2,833,201	\$470	249	24
Ford	33,094	\$4,844,738	\$146	390	85
Greenwood	5,868	\$2,411,046	\$411	433	14
Harvey	34,291	\$4,884,957	\$142	239	143
Kingman	6,974	\$4,381,552	\$628	254	27
Logan	2,732	\$1,354,235	\$496	892	3
Marshall	9,652	\$4,474,463	\$464	338	29
McPherson	28,448	\$7,336,954	\$258	354	80
Meade	4,029	\$1,961,567	\$487	264	15
Mitchell	5,879	\$3,326,020	\$566	258	23
Nemaha	10,121	\$3,726,500	\$368	338	30
Osage	15,770	\$3,302,099	\$209	249	63
Osborne	3,439	\$1,253,997	\$365	230	15
Pawnee	6,366	\$2,647,669	\$416	260	24
Reno	61,793	\$11,333,409	\$183	541	114
Rice	9,362	\$7,276,670	\$777	317	30
Riley	73,202	\$8,034,891	\$110	249	294
Russell	6,804	\$3,654,773	\$537	420	16
Sedgwick	519,907	\$31,342,695	\$60	603	862
Shawnee	175,999	\$13,156,321	\$75	288	611
Stafford	4,046	\$2,649,395	\$655	252	16
Sumner	22,578	\$12,646,508	\$560	398	57
Thomas	7,702	\$2,235,402	\$290	232	33
Wabaunsee	6,906	\$2,934,600	\$425	229	30
Washington	5,427	\$3,717,227	\$685	1,210	4
Totals	1,369,878	\$200,887,474	\$146.65	12,435	110

**BUDGET/ROAD MILES VS ASSESSED VALUATION
2022 COUNTY ENGINEERS' REPORT
TOTALS OF ALL REPORTS SUBMITTED**

Item	County Unit	County Rural System	County/ Township Unit	State-Wide Totals
Number of Counties Reporting	66	3	35	104
Total Valuation	\$23,195,340,636	\$1,714,541,023	\$17,316,889,852	\$42,226,771,511
Annual Road & Bridge Operating Budget	\$247,869,518	\$38,061,503	\$200,887,474	\$486,818,495
Spending per \$1 Million Valuation	\$10,686	\$14,761	\$11,601	\$11,529
Miles of County Maintained Roads	67,251	2,980	12,435	82,666
Dollars Valuation per Mile of Road	\$344,907	\$575,349	\$1,392,593	\$510,812

**BUDGET/ROAD MILES VS ASSESSED VALUATION
2022 COUNTY ENGINEERS' REPORT
COUNTY UNIT COUNTIES**

COUNTY	ASSESSED VALUATION	ANNUAL BUDGET	SPENDING PER \$1 MILLION VALUATION	MILES OF ROAD	DOLLARS VALUATION PER MILE OF ROAD
Allen	\$164,072,008	\$4,877,457	\$29,728	1,003	\$163,581
Anderson	\$126,378,465	\$4,160,400	\$32,920	1,056	\$119,677
Bourbon	\$119,035,752	\$3,590,240	\$30,161	1,000	\$119,036
Chase	\$60,382,881	\$2,064,400	\$34,188	525	\$115,015
Chautauqua	\$37,929,306	\$1,446,205	\$38,129	697	\$54,418
Cherokee	\$197,878,459	\$3,669,250	\$18,543	1,301	\$152,097
Cheyenne	\$64,563,571	\$1,716,092	\$26,580	1,054	\$61,256
Clark	\$45,225,266	\$988,042	\$21,847	624	\$72,476
Cloud	\$127,746,148	\$4,202,980	\$32,901	1,193	\$107,080
Coffey	\$651,127,236	\$10,135,388	\$15,566	1,200	\$542,606
Comanche	\$32,256,269	\$1,597,000	\$49,510	650	\$49,625
Crawford	\$308,005,652	\$5,020,902	\$16,301	1,007	\$305,865
Doniphan	\$158,602,439	\$3,444,122	\$21,715	618	\$256,638
Elk	\$33,865,513	\$1,934,352	\$57,119	749	\$45,214
Ellis	\$458,724,151	\$5,064,122	\$11,040	1,341	\$342,076
Finney	\$570,873,335	\$4,990,822	\$8,742	1,226	\$465,639
Franklin	\$332,517,195	\$6,503,904	\$19,560	1,024	\$324,724
Geary	\$277,524,280	\$4,662,896	\$16,802	361	\$768,765
Gove	\$80,263,584	\$3,368,394	\$41,967	1,090	\$73,636
Graham	\$62,914,671	\$1,900,000	\$30,200	1,137	\$55,334
Grant	\$175,842,673	\$2,469,770	\$14,045	787	\$223,434
Gray	\$122,979,372	\$4,055,000	\$32,973	1,242	\$99,017
Greeley	\$34,289,487	\$883,967	\$25,780	654	\$52,430
Hamilton	\$40,662,542	\$1,046,124	\$25,727	780	\$52,131
Harper	\$111,834,518	\$2,515,912	\$22,497	1,371	\$81,571
Haskell	\$120,384,822	\$3,794,612	\$31,521	637	\$188,987
Hodgeman	\$43,910,201	\$1,331,030	\$30,313	1,057	\$41,542
Jackson	\$143,313,404	\$4,940,327	\$34,472	999	\$143,457
Jefferson	\$229,031,732	\$7,311,720	\$31,924	865	\$264,777
Jewell	\$77,488,939	\$2,808,485	\$36,244	1,511	\$51,283
Johnson	\$13,478,869,578	\$16,568,538	\$1,229	391	\$34,472,812
Kearney	\$113,671,192	\$1,701,561	\$14,969	697	\$163,086
Kiowa	\$92,503,766	\$4,383,203	\$47,384	779	\$118,747
Labette	\$148,537,790	\$5,475,427	\$36,862	1,156	\$128,493
Lane	\$50,496,065	\$915,888	\$18,138	597	\$84,583
Lincoln	\$65,381,654	\$2,150,172	\$32,886	1,021	\$64,037
Linn	\$320,253,185	\$4,801,450	\$14,993	961	\$333,250
Lyon	\$396,017,662	\$8,320,227	\$21,010	1,428	\$277,323
Marion	\$169,096,834	\$6,926,841	\$40,964	1,580	\$107,023

**BUDGET/ROAD MILES VS ASSESSED VALUATION
2022 COUNTY ENGINEERS' REPORT
COUNTY UNIT COUNTIES**

COUNTY	ASSESSED VALUATION	ANNUAL BUDGET	SPENDING PER \$1 MILLION VALUATION	MILES OF ROAD	DOLLARS VALUATION PER MILE OF ROAD
Miami	\$77,180,362	\$9,511,448	\$123,237	1,132	\$68,181
Montgomery	\$352,041,074	\$8,553,935	\$24,298	1,063	\$331,177
Morris	\$87,312,107	\$4,675,792	\$53,553	1,120	\$77,957
Morton	\$73,379,165	\$1,162,239	\$15,839	591	\$124,161
Neosho	\$136,296,422	\$2,666,142	\$19,561	958	\$142,272
Ness	\$79,998,868	\$2,448,447	\$30,606	1,250	\$63,999
Norton	\$70,059,694	\$1,679,450	\$23,972	1,359	\$51,552
Ottawa	\$95,865,778	\$3,807,764	\$39,720	1,133	\$84,612
Phillips	\$71,664,028	\$2,511,490	\$35,045	1,234	\$58,075
Pratt	\$193,725,542	\$4,715,757	\$24,342	1,411	\$137,297
Rawlins	\$73,370,847	\$1,715,561	\$23,382	1,515	\$48,430
Republic	\$97,654,073	\$3,904,953	\$39,988	1,272	\$76,772
Rooks	\$96,937,703	\$1,850,000	\$19,084	1,333	\$72,721
Rush	\$51,638,759	\$2,657,245	\$51,458	1,215	\$42,501
Saline	\$672,700,274	\$11,314,000	\$16,819	1,084	\$620,572
Scott	\$100,928,921	\$1,585,083	\$15,705	720	\$140,179
Seward	\$266,415,094	\$2,576,248	\$9,670	683	\$390,066
Sheridan	\$72,403,867	\$3,774,770	\$52,135	1,204	\$60,136
Sherman	\$103,546,844	\$2,026,700	\$19,573	1,273	\$81,341
Smith	\$73,502,751	\$3,632,704	\$49,423	1,972	\$37,273
Stanton	\$55,175,221	\$172,300	\$3,123	730	\$75,582
Stevens	\$131,254,239	\$2,558,566	\$19,493	935	\$140,379
Trego	\$75,071,081	\$1,712,372	\$22,810	1,092	\$68,746
Wallace	\$40,522,660	\$2,303,230	\$56,838	660	\$61,398
Wichita	\$52,486,744	\$1,739,399	\$33,140	935	\$56,136
Wilson	\$104,020,193	\$2,809,640	\$27,011	1,250	\$83,216
Woodson	\$45,736,728	\$2,067,060	\$45,195	758	\$60,339
TOTAL	\$23,195,340,636	\$247,869,518	\$10,686	67,251	\$344,907

**BUDGET/ROAD MILES VS. ASSESSED VALUATION SUMMARY
2022 COUNTY ENGINEERS' REPORT
COUNTY RURAL SYSTEM COUNTIES**

COUNTY	ASSESSED VALUATION	ANNUAL BUDGET	SPENDING PER \$1 MILLION VALUATION	MILES OF ROAD	DOLLARS VALUATION PER MILE OF ROAD
Clay	\$15,614,499	\$4,868,110	\$311,769	1,040	\$15,014
Leavenworth	\$944,959,083	\$22,064,000	\$23,349	744	\$1,270,106
Pottawatomie	\$753,967,441	\$11,129,393	\$14,761	1,196	\$630,408
Totals	\$1,714,541,023	\$38,061,503	\$14,761	2,980	\$575,349

**BUDGET/ROAD MILES VS. ASSESSED VALUATION
2022 COUNTY ENGINEERS' REPORT
COUNTY TOWNSHIP COUNTIES**

COUNTY	ASSESSED VALUATION	ANNUAL BUDGET	SPENDING PER \$1 MILLION VALUATION	MILES OF ROAD	DOLLARS VALUATION PER MILE OF ROAD
Atchison	\$203,534,631	\$4,517,869	\$22,197	290	\$701,843.56
Barber	\$101,203,223	\$3,352,888	\$33,130	240	\$421,680.10
Barton	\$293,704,801	\$5,742,809	\$19,553	390	\$753,089.23
Brown	\$219,974,015	\$3,800,000	\$17,275	276	\$797,007.30
Butler	\$937,348,227	\$11,216,220	\$11,966	406	\$2,308,739.48
Cowley	\$341,147,026	\$5,014,329	\$14,698	351	\$971,928.85
Decatur	\$63,209,807	\$1,719,681	\$27,206	231	\$273,635.53
Dickinson	\$263,859,009	\$6,591,651	\$24,982	314	\$840,315.32
Douglas	\$1,774,964,757	\$9,837,950	\$5,543	232	\$7,650,710.16
Edwards	\$62,870,882	\$1,373,189	\$21,841	218	\$288,398.54
Ellsworth	\$118,351,715	\$2,833,201	\$23,939	249	\$475,308.09
Ford	\$356,016,504	\$4,844,738	\$13,608	390	\$912,862.83
Greenwood	\$83,136,660	\$2,411,046	\$29,001	433	\$192,001.52
Harvey	\$350,296,630	\$4,884,957	\$13,945	239	\$1,465,676.28
Kingman	\$118,568,213	\$4,381,552	\$36,954	254	\$466,803.99
Logan	\$72,211,522	\$1,354,235	\$18,754	892	\$80,954.62
Marshall	\$213,000,047	\$4,474,463	\$21,007	338	\$630,177.65
McPherson	\$514,430,825	\$7,336,954	\$14,262	354	\$1,453,194.42
Meade	\$129,370,892	\$1,961,567	\$15,162	264	\$490,041.26
Mitchell	\$93,994,459	\$3,326,020	\$35,385	258	\$364,319.61
Nemaha	\$225,364,656	\$3,726,500	\$16,535	338	\$666,759.34
Osage	\$182,839,126	\$3,302,099	\$18,060	249	\$734,293.68
Osborne	\$66,003,787	\$1,253,997	\$18,999	230	\$286,972.99
Pawnee	\$82,906,988	\$2,647,669	\$31,935	260	\$318,873.03
Reno	\$677,588,313	\$11,333,409	\$16,726	541	\$1,252,473.78
Rice	\$183,268,051	\$7,276,670	\$39,705	317	\$578,132.65
Riley	\$738,241,501	\$8,034,891	\$10,884	249	\$2,964,825.31
Russell	\$110,366,360	\$3,654,773	\$33,115	420	\$262,777.05
Sedgwick	\$5,910,120,142	\$31,342,695	\$5,303	603	\$9,801,194.27
Shawnee	\$2,029,620,074	\$13,156,321	\$6,482	288	\$7,047,291.92
Stafford	\$98,872,502	\$2,649,395	\$26,796	252	\$392,351.20
Sumner	\$291,932,031	\$12,646,508	\$43,320	398	\$733,497.57
Thomas	\$153,104,025	\$2,235,402	\$14,601	232	\$659,931.14
Wabaunsee	\$105,508,585	\$2,934,600	\$27,814	229	\$460,736.18
Washington	\$149,959,866	\$3,717,227	\$24,788	1,210	\$123,933.77
Total	\$17,316,889,852	\$200,887,474	\$11,601	12,435	\$1,392,592.67

**COUNTY ROAD MAINTENANCE
2022 COUNTY ENGINEERS' REPORT
TOTALS OF ALL REPORTS SUBMITTED**

Item	County Unit	County Rural System	County/ Township Unit	State-Wide Totals
Miles of County Maintenance Work				
Chip Seals	787	137	777	1701
Overlays	201	38	395	634
Recycle	14	1	0	15
Gravel	787	0	88	875
County Maintenance Costs				
Asphalt/Concrete Road Maintenance	\$41,201,998	\$6,865,361	\$65,466,432	\$113,533,791
Gravel/Earth Road Maintenance	\$82,261,236	\$7,336,268	\$16,648,387	\$106,245,891
Bridge Maintenance	\$3,005,837	\$562,697	\$4,216,957	\$7,785,491
Total Maintenance Costs	\$126,469,071	\$14,764,326	\$86,331,776	\$227,565,173

**COUNTY ROAD MAINTENANCE
2022 COUNTY ENGINEERS' REPORT
COUNTY UNIT COUNTIES**

COUNTY	MAINTENANCE MILES				COUNTY MAINTENANCE COSTS			
	CHIP SEALS	OVERLAYS	RECYCLE	GRAVEL	ASPHALT/CONC. ROAD MAINT.	GRAVEL/EARTH ROAD MAINT.	BRIDGE MAINT.	TOTAL MAINT. COSTS
Allen	0	0	0	0	\$96,121	\$155,938	\$0	\$252,059
Anderson	0	11	0	25	\$1,000,000	\$850,000	\$0	\$1,850,000
Bourbon	5	9	0	0	\$1,013,719	\$1,442,147	\$100,635	\$2,556,501
Chase	6	0	2	0	\$161,052	\$393,535	\$30,208	\$584,795
Chautauqua	0	0	0	0	\$0	\$823,648	\$7,537	\$831,185
Cherokee	0	5	0	2	\$419,630	\$1,500,000	\$82,500	\$2,002,130
Cheyenne	5	0	0	19	\$11,702	\$984,278	\$69,898	\$1,065,878
Clark	0	0	0	0	\$4,843	\$819,508	\$2,190	\$826,541
Cloud	15	0	0	0	\$709,062	\$1,623,417	\$132,243	\$2,464,722
Coffey	51	3	0	21	\$1,805,030	\$2,803,127	\$34,170	\$4,642,327
Comanche	5	5	0	0	\$0	\$350,000	\$0	\$350,000
Crawford	29	24	1	0	\$917,419	\$1,469,219	\$77,464	\$2,464,102
Doniphan	28	5	0	0	\$792,564	\$1,966,225	\$25,732	\$2,784,521
Elk	0	0	0	56	\$0	\$687,196	\$247,259	\$934,455
Ellis	6	6	0	15	\$871,696	\$3,463,398	\$65,644	\$4,400,738
Finney	42	0	0	0	\$1,094,780	\$1,200,000	\$0	\$2,294,780
Franklin	36	6	0	10	\$1,761,678	\$970,963	\$122,708	\$2,855,349
Geary	12	0	0	0	\$396,407	\$223,178	\$0	\$619,585
Gove	5	0	0	1	\$143,439	\$874,338	\$19,405	\$1,037,182
Graham	0	0	0	0	\$0	\$1,359,891	\$0	\$1,359,891
Grant	15	0	0	0	\$403,796	\$661,798	\$0	\$1,065,594
Gray	32	11	0	0	\$1,517,712	\$1,303,781	\$0	\$2,821,493
Greeley	0	0	0	0	\$0	\$663,967	\$0	\$663,967
Hamilton	9	0	0	0	\$141,358	\$374,037	\$13,365	\$528,760
Harper	0	0	0	0	\$72,738	\$1,210,146	\$112,095	\$1,394,978
Haskell	0	0	0	0	\$293,798	\$651,711	\$700	\$946,209
Hodgeman	1	0	0	0	\$46,356	\$544,000	\$30,000	\$620,356
Jackson	5	0	0	106	\$132,844	\$3,207,422	\$15,077	\$3,355,343
Jefferson	51	1	0	1	\$1,694,281	\$2,810,310	\$23,996	\$4,528,587
Jewell	0	2	0	0	\$132,260	\$1,372,880	\$15,463	\$1,520,603
Johnson	24	14	0	35	\$2,194,955	\$1,068,623	\$139,911	\$3,403,489
Kearney	18	0	0	0	\$261,868	\$365,676	\$4,871	\$632,415
Kiowa	1	18	0	0	\$720,206	\$1,487,577	\$17,627	\$2,225,410
Labette	0	6	0	80	\$1,037,255	\$1,746,435	\$410,106	\$3,193,796
Lane	0	0	0	20	\$0	\$620,499	\$0	\$620,499
Lincoln	13	0	0	3	\$464,898	\$191,168	\$23,907	\$679,973
Linn	22	5	0	0	\$614,962	\$2,411,517	\$12,862	\$3,039,341
Lyon	13	0	0	0	\$696,348	\$3,142,316	\$16,584	\$3,855,248
Marion	20	0	0	0	\$1,514,000	\$2,031,000	\$0	\$3,545,000
Miami	65	18	0	0	\$3,443,350	\$1,210,000	\$205,000	\$4,858,350
Montgomery	23	13	0	44	\$3,044,355	\$2,620,538	\$124,628	\$5,789,521
Morris	26	0	0	7	\$697,328	\$1,967,731	\$88,232	\$2,753,291

**COUNTY ROAD MAINTENANCE
2022 COUNTY ENGINEERS' REPORT
COUNTY UNIT COUNTIES**

COUNTY	MAINTENANCE MILES				COUNTY MAINTENANCE COSTS			
	CHIP SEALS	OVERLAYS	RECYCLE	GRAVEL	ASPHALT/CONC. ROAD MAINT.	GRAVEL/EARTH ROAD MAINT.	BRIDGE MAINT.	TOTAL MAINT. COSTS
Morton	12	0	0	0	\$33,755	\$686,787	\$463	\$721,005
Neosho	16	0	0	0	\$105,910	\$954,695	\$3,102	\$1,063,707
Ness	0	0	0	0	\$0	\$1,400,000	\$7,000	\$1,407,000
Norton	1	0	0	0	\$190,025	\$484,644	\$1,286	\$675,955
Ottawa	0	7	0	0	\$180,236	\$238,800	\$41,559	\$460,595
Phillips	0	0	0	0	\$1,262,571	\$820,316	\$97,193	\$2,180,080
Pratt	50	5	0	0	\$1,243,422	\$3,115,025	\$1,146	\$4,359,593
Rawlins	5	0	0	35	\$95,771	\$819,662	\$9,567	\$925,000
Republic	8	0	0	0	\$343,422	\$2,831,893	\$314,655	\$3,489,970
Rooks	0	0	0	0	\$5,962	\$2,045,165	\$16,151	\$2,067,278
Rush	0	0	0	0	\$66,433	\$427,878	\$1,130	\$495,441
Saline	39	6	0	10	\$3,006,709	\$2,435,750	\$51,036	\$5,493,495
Scott	13	0	0	0	\$278,060	\$1,222,362	\$0	\$1,500,422
Seward	0	0	0	0	\$16,173	\$1,131,141	\$0	\$1,147,314
Sheridan	0	0	0	19	\$0	\$48,045	\$0	\$48,045
Sherman	14	14	0	0	\$78,264	\$909,131	\$9,918	\$997,313
Smith	0	0	1	6	\$573,714	\$1,525,496	\$162,489	\$2,261,699
Stanton	20	0	10	235	\$700,000	\$102,400	\$0	\$802,400
Stevens	11	6	0	15	\$1,142,205	\$624,264	\$1,473	\$1,767,942
Trego	0	0	0	0	\$0	\$980,378	\$15,653	\$996,031
Wallace	6	1	0	0	\$233,454	\$198,508	\$0	\$431,962
Wichita	9	0	0	0	\$0	\$1,500,465	\$0	\$1,500,465
Wilson	0	0	0	22	\$222,102	\$2,135,292	\$0	\$2,357,394
Woodson	0	0	0	0	\$1,100,000	\$0	\$0	\$1,100,000
Totals	787	201	14	787	\$41,201,998	\$82,261,236	\$3,005,837	\$126,469,071

**COUNTY ROAD MAINTENANCE
2022 COUNTY ENGINEERS' REPORT
COUNTY RURAL SYSTEM COUNTIES**

COUNTY	MAINTENANCE MILES				COUNTY MAINTENANCE COSTS			
	CHIP SEALS	OVERLAYS	RECYCLE	GRAVEL	ASPHALT/CONC. ROAD MAINT.	GRAVEL/EARTH ROAD MAINT.	BRIDGE MAINT.	TOTAL MAINT. COSTS
Pottawatomie	21	18	1	0	\$1,495,561	\$4,245,268	\$159,797	\$5,900,626
Clay	6	20	0	0	\$1,240,000	\$650,000	\$400,000	\$2,290,000
Leavenworth	110	0	0	0	\$4,129,800	\$2,441,000	\$2,900	\$6,573,700
Totals	137	38	1	0	\$6,865,361	\$7,336,268	\$562,697	\$14,764,326

**COUNTY ROAD MAINTENANCE
2022 COUNTY ENGINEERS' REPORT
COUNTY TOWNSHIP ROAD SYSTEM**

COUNTY	MAINTENANCE MILES				COUNTY MAINTENANCE COSTS			
	CHIP SEALS	OVERLAYS	RECYCLE	GRAVEL	ASPHALT/CONC. ROAD MAINT.	GRAVEL/EARTH ROAD MAINT.	BRIDGE MAINT.	TOTAL MAINT. COSTS
Atchison	65	0	0	0	\$1,693,935	\$669,221	\$77,931	\$2,441,087
Barber	0	11	0	0	\$1,857,879	\$394,996	\$84,373	\$2,337,248
Barton	91	33	0	0	\$3,433,381	\$249,569	\$39,487	\$3,722,437
Brown	93	0	0	0	\$1,748,484	\$0	\$98,852	\$1,847,336
Butler	31	5	0	8	\$3,386,251	\$263,911	\$121,784	\$3,771,946
Cowley	62	0	0	0	\$1,622,867	\$199,665	\$44,335	\$1,866,867
Decatur	0	0	0	0	\$0	\$379,947	\$4,497	\$384,444
Dickinson	0	18	0	0	\$2,259,088	\$247,589	\$677,335	\$3,184,012
Douglas	0	6	0	0	\$4,430,423	\$818,736	\$166,206	\$5,415,365
Edwards	10	9	0	0	\$328,500	\$200,000	\$0	\$528,500
Ellsworth	22	22	0	0	\$762,405	\$613,119	\$338,325	\$1,713,849
Ford	41	8	0	0	\$1,267,202	\$373,725	\$13,326	\$1,654,253
Greenwood	0	0	0	0	\$14,742	\$920,737	\$12,133	\$947,612
Harvey	0	10	0	0	\$44,200	\$330,000	\$55,521	\$429,721
Kingman	32	0	0	0	\$1,627,151	\$7,793	\$62,611	\$1,697,555
Logan	0	0	0	0	\$23,131	\$850,122	\$0	\$873,253
Marshall	12	8	0	0	\$253,646	\$1,413,384	\$99,038	\$1,766,068
McPherson	46	19	0	0	\$4,905,207	\$116,993	\$72,407	\$5,094,607
Meade	0	13	0	0	\$499,004	\$374,868	\$29,305	\$903,177
Mitchell	19	10	0	12	\$1,599,936	\$148,010	\$52,315	\$1,800,261
Nemaha	22	13	0	0	\$1,315,772	\$1,915,597	\$81,965	\$3,313,334
Osage	0	0	0	0	\$1,107,847	\$780,000	\$0	\$1,887,847
Osborne	0	0	0	24	\$5,046	\$469,260	\$15,737	\$490,043
Pawnee	35	14	0	1	\$978,000	\$775,000	\$75,000	\$1,828,000
Reno	0	24	0	0	\$2,749,910	\$0	\$342,519	\$3,092,429
Rice	26	30	0	2	\$5,779,945	\$253,822	\$0	\$6,033,767
Riley	17	9	0	0	\$2,363,016	\$1,031,151	\$284,936	\$3,679,103
Russell	22	2	0	0	\$1,024,597	\$789,411	\$184,230	\$1,998,237
Sedgwick	2	80	0	0	\$12,148,087	\$342,709	\$487,875	\$12,978,671
Shawnee	50	0	0	0	\$4,334,295	\$0	\$72,044	\$4,406,339
Stafford	54	8	0	0	\$843,226	\$38,841	\$18,554	\$900,621
Sumner	15	15	0	32	\$894,998	\$1,156,969	\$483,389	\$2,535,356
Thomas	0	7	0	0	\$64,147	\$164,568	\$0	\$228,715
Wabaunsee	0	0	0	0	\$89,021	\$338,427	\$75,605	\$503,053
Washington	10	21	0	9	\$11,093	\$20,248	\$45,322	\$76,663
Totals	777	395	0	88	\$65,466,432	\$16,648,387	\$4,216,957	\$86,331,776

**COUNTY CONSTRUCTION COSTS
2022 COUNTY ENGINEERS' REPORT
TOTALS OF ALL REPORTS SUBMITTED**

Item	County Unit	County Rural System	County/ Township Unit	State-Wide Totals
COUNTY CONSTRUCTION MILES				
Paved Road Miles	87	25	92	204
Gravel Road Miles	1044	511	22	1,577
Number of Bridges	33	9	47	89
Number of Culverts	121	26	68	215
COUNTY CONSTRUCTION COSTS				
Road Construction	\$14,235,836	\$7,568,765	\$19,196,406	\$41,001,007
Bridge Construction/Rehabilitation	\$6,177,151	\$4,748,586	\$13,838,151	\$24,763,888
Culvert Construction	\$2,847,695	\$278,451	\$3,187,008	\$6,313,154
Total Construction Costs	\$23,260,682	\$12,595,802	\$36,221,565	\$72,078,049

**COUNTY CONSTRUCTION COSTS
2022 COUNTY ENGINEERS' REPORT
COUNTY UNIT COUNTIES**

COUNTY	CONSTRUCTION MILES				CONSTRUCTION COSTS			
	MILES OF PAVED ROAD	MILES OF GRAVEL ROAD	NUMBER OF BRIDGES	NUMBER OF CULVERT	ROAD CONSTR.	BRIDGE CONST./REHAB.	CULVERT CONST.	TOTAL CONST. COSTS
Allen	0	0	0	0	\$0	\$0	\$0	\$0
Anderson	0	25	0	2	\$400,000	\$0	\$40,000	\$440,000
Bourbon	0	0	0	0	\$0	\$0	\$0	\$0
Chase	3	0	2	12	\$161,052	\$123,498	\$14,576	\$299,126
Chautauqua	0	0	0	0	\$0	\$0	\$0	\$0
Cherokee	0	2	0	0	\$38,000	\$0	\$0	\$38,000
Cheyenne	0	16	1	1	\$89,026	\$375,084	\$6,504	\$470,614
Clark	0	0	0	0	\$0	\$0	\$0	\$0
Cloud	0	2	1	3	\$51,923	\$285,835	\$189,106	\$526,864
Coffey	0	3	0	0	\$393,908	\$0	\$0	\$393,908
Comanche	0	0	0	20	\$0	\$0	\$0	\$0
Crawford	0	0	0	2	\$0	\$0	\$37,800	\$37,800
Doniphan	5	6	1	2	\$157,373	\$221,421	\$56,666	\$435,460
Elk	0	32	1	2	\$687,196	\$740,000	\$150,000	\$1,577,196
Ellis	0	26	1	4	\$349,289	\$49,200	\$109,241	\$507,730
Finney	0	17	0	0	\$259,732	\$0	\$0	\$259,732
Franklin	4	10	1	0	\$365,000	\$112,210	\$0	\$477,210
Geary	0	1	1	0	\$13,435	\$10,782	\$0	\$24,217
Gove	2	1	0	0	\$977,874	\$0	\$0	\$977,874
Graham	0	0	0	0	\$0	\$0	\$0	\$0
Grant	0	6	0	0	\$226,197	\$0	\$0	\$226,197
Gray	0	0	0	0	\$0	\$0	\$0	\$0
Greeley	0	6	0	0	\$141,310	\$0	\$0	\$141,310
Hamilton		8	0	0	\$94,141	\$0	\$0	\$94,141
Harper	0	0	4	0	\$0	\$52,644	\$0	\$52,644
Haskell	0	0	0	0	\$0	\$0	\$0	\$0
Hodgeman	0	5	0	0	\$15,000	\$0	\$0	\$15,000
Jackson	0	0	1	2	\$0	\$275,204	\$24,085	\$299,289
Jefferson	1	2	0	4	\$172,144	\$0	\$154,973	\$327,117
Jewell	0	0	1	7	\$0	\$66,560	\$75,560	\$142,120
Johnson	16	0	1	2	\$2,079,210	\$91,850	\$45,375	\$2,216,435
Kearney	0	0	0	0	\$7	\$0	\$0	\$7
Kiowa	0	0	0	0	\$0	\$0	\$0	\$0
Labette	0	0	0	6	\$0	\$0	\$57,400	\$57,400
Lane	0	8	0	0	\$98,643	\$0	\$0	\$98,643
Lincoln	0	17	0	6	\$49,174	\$0	\$90,100	\$139,274
Linn		2	1	0	\$138,508	\$14,930	\$0	\$153,438
Lyon	0	0	3	1	\$0	\$1,114,918	\$18,881	\$1,133,799

**COUNTY CONSTRUCTION COSTS
2022 COUNTY ENGINEERS' REPORT
COUNTY UNIT COUNTIES**

COUNTY	CONSTRUCTION MILES				CONSTRUCTION COSTS			
	MILES OF PAVED ROAD	MILES OF GRAVEL ROAD	NUMBER OF BRIDGES	NUMBER OF CULVERT	ROAD CONSTR.	BRIDGE CONST./REHAB.	CULVERT CONST.	TOTAL CONST. COSTS
Marion	12	0	0	0	\$3,045,000	\$0	\$0	\$3,045,000
Miami	0	0	1	10	\$0	\$450,000	\$650,000	\$1,100,000
Montgomery	0	0	0	3	\$0	\$0	\$92,934	\$92,934
Morris	0	23	1	0	\$253,500	\$784,792	\$0	\$1,038,292
Morton	0	0	0	0	\$0	\$0	\$0	\$0
Neosho	0	0	0	0	\$0	\$0	\$0	\$0
Ness	0	0	0	6	\$0	\$0	\$11,000	\$11,000
Norton	1	5	0	0	\$1,286	\$0	\$0	\$1,286
Ottawa	35	0	2	4	\$180,236	\$41,559	\$56,331	\$278,126
Phillips	0	0	0	0	\$0	\$0	\$0	\$0
Pratt	0	0	0	0	\$0	\$0	\$0	\$0
Rawlins	0	42	1	1	\$235,400	\$25,796	\$18,999	\$280,195
Republic	0	5	0	4	\$149,000	\$0	\$88,000	\$237,000
Rooks	0	0	0	0	\$0	\$0	\$0	\$0
Rush	0	0	0	0	\$0	\$0	\$0	\$0
Saline	6	8	3	9	\$2,019,634	\$862,271	\$583,208	\$3,465,114
Scott	0	6	0	0	\$39,843	\$0	\$0	\$39,843
Seward	0	0	0	0	\$0	\$0	\$0	\$0
Sheridan	0	735	1	0	\$676,122	\$63,023	\$0	\$739,145
Sherman	0	0	1	0	\$0	\$220,978	\$0	\$220,978
Smith	1	6	2	5	\$565,859	\$194,272	\$119,171	\$879,302
Stanton	0	2	0	0	\$25,100	\$0	\$0	\$25,100
Stevens	0	0	0	0	\$0	\$0	\$0	\$0
Trego	1	0	1	0	\$4,111	\$324	\$0	\$4,435
Wallace	0	15	0	1	\$77,856	\$0	\$5,298	\$83,154
Wichita	0	2	0	0	\$4,747	\$0	\$0	\$4,747
Wilson	0	0	0	2	\$0	\$0	\$152,487	\$152,487
Woodson	0	0	0	0	\$0	\$0	\$0	\$0
Totals	87	1044	33	121	\$14,235,836	\$6,177,151	\$2,847,695	\$23,260,682

**COUNTY CONSTRUCTION COSTS
2022 COUNTY ENGINEERS' REPORT
COUNTY RURAL SYSTEM COUNTIES**

COUNTY	CONSTRUCTION MILES				CONSTRUCTION COSTS			
	MILES OF PAVED ROAD	MILES OF GRAVEL ROAD	NUMBER OF BRIDGES	NUMBER OF CULVERT	ROAD CONSTR.	BRIDGE CONST./ REHAB.	CULVERT CONST.	TOTAL CONST. COSTS
Clay	20	510	5	25	\$1,930,000	\$532,000	\$110,000	\$2,572,000
Leavenworth	4	0	4	0	\$3,866,974	\$4,072,243	\$0	\$7,939,217
Pottawatomie	1	1	0	1	\$1,771,791	\$144,343	\$168,451	\$2,084,585
Totals	25	511	9	26	\$7,568,765	\$4,748,586	\$278,451	\$12,595,802

**COUNTY CONSTRUCTION COSTS
2022 COUNTY ENGINEERS' REPORT
COUNTY TOWNSHIP COUNTIES**

COUNTY	CONSTRUCTION MILES				CONSTRUCTION COSTS			
	MILES OF PAVED ROAD	MILES OF GRAVEL ROAD	NUMBER OF BRIDGES	NUMBER OF CULVERT	ROAD CONSTR.	BRIDGE CONST./ REHAB.	CULVERT CONST.	TOTAL CONST. COSTS
Atchison	0	0	1	1	\$0	\$178,239	\$26,996	\$205,235
Barber	0	0	0	2	\$0	\$0	\$48,715	\$48,715
Barton	2	0	0	0	\$129,467	\$0	\$0	\$129,467
Brown	0	0	0	1	\$0	\$0	\$13,385	\$13,385
Butler	2	0	2	8	\$2,537,400	\$1,393,477	\$569,935	\$4,500,812
Cowley	0	0	1	3	\$0	\$44,335	\$35,050	\$79,385
Decatur	0	0	0	0	\$0	\$0	\$0	\$0
Dickinson	0	0	4	3	\$0	\$1,072,393	\$97,779	\$1,170,172
Douglas	1	0	4	4	\$50,072	\$191,813	\$171,948	\$413,833
Edwards	0	0	0	0	\$0	\$0	\$0	\$0
Ellsworth	0	0	0	0	\$0	\$0	\$0	\$0
Ford	0	0	0	0	\$0	\$0	\$0	\$0
Greenwood	0	0	1	0	\$0	\$585,541	\$0	\$585,541
Harvey	10	4	0	0	\$4,484,327	\$0	\$0	\$4,484,327
Kingman	16	0	0	0	\$2,126,802	\$0	\$0	\$2,126,802
Logan	0	0	0	0	\$0	\$0	\$0	\$0
Marshall	8	0	2	6	\$345,989	\$275,166	\$726,537	\$1,347,692
McPherson	0	0	1	5	\$0	\$73,499	\$348,402	\$421,901
Meade	1	4	0	0	\$133,069	\$0	\$0	\$133,069
Mitchell	0	0	1	0	\$0	\$99,727	\$0	\$99,727
Nemaha	0	0	5	0	\$0	\$330,463	\$81,965	\$412,428
Osage	0	0	0	0	\$0	\$0	\$0	\$0
Osborne	0	0	1	1	\$0	\$134,927	\$75,489	\$210,416
Pawnee	0	3	1	2	\$250,000	\$225,000	\$100,000	\$575,000
Reno	0	0	4	1	\$0	\$2,247,658	\$30,956	\$2,278,614
Rice	0	2	1	2	\$63,286	\$364,352	\$32,679	\$460,317
Riley	0	0	7	4	\$0	\$1,889,429	\$34,997	\$1,924,426
Russell	0	0	0	0	\$0	\$0	\$0	\$0
Sedgwick	1	0	4	3	\$407,096	\$1,966,972	\$282,055	\$2,656,123
Shawnee	0	0	2	0	\$0	\$1,438,466	\$0	\$1,438,466
Stafford	0	0	0	0	\$0	\$0	\$0	\$0
Sumner	13	0	3	7	\$7,388,385	\$141,466	\$365,092	\$7,894,943
Thomas	7	0	0	0	\$954,016	\$0	\$0	\$954,016
Wabaunsee	0	0	1	12	\$0	\$1,046,000	\$124,800	\$1,170,800
Washington	31	9	1	3	\$326,497	\$139,228	\$20,227	\$485,952
Totals	92	22	47	68	\$19,196,406	\$13,838,151	\$3,187,008	\$36,221,565

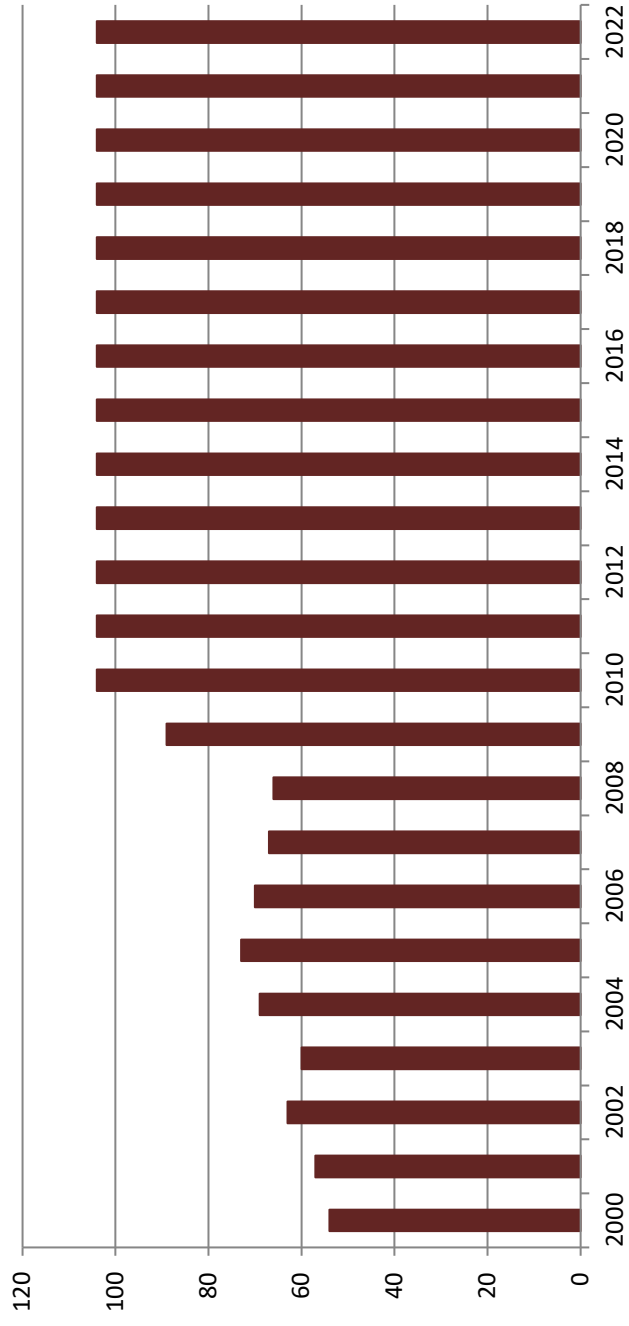
**TOWNSHIP MAINTENANCE AND CONSTRUCTION COSTS
2022 COUNTY ENGINEERS' REPORT
TOTALS OF ALL REPORTS SUBMITTED**

Item	State-Wide Totals
Miles of Township Roads	
Miles of Concrete Roads	5
Miles of Asphalt Roads	650
Miles of Gravel Roads	19,381
Miles of Earth Roads	8,976
Total Miles of Township Roads	29,012
Cost of Township Road Maintenance	\$77,330,464
Cost of Township Road Construction	\$454,237
Total Township Costs	\$77,784,701
Total Townships in County	648
Total Township Reports Received	486

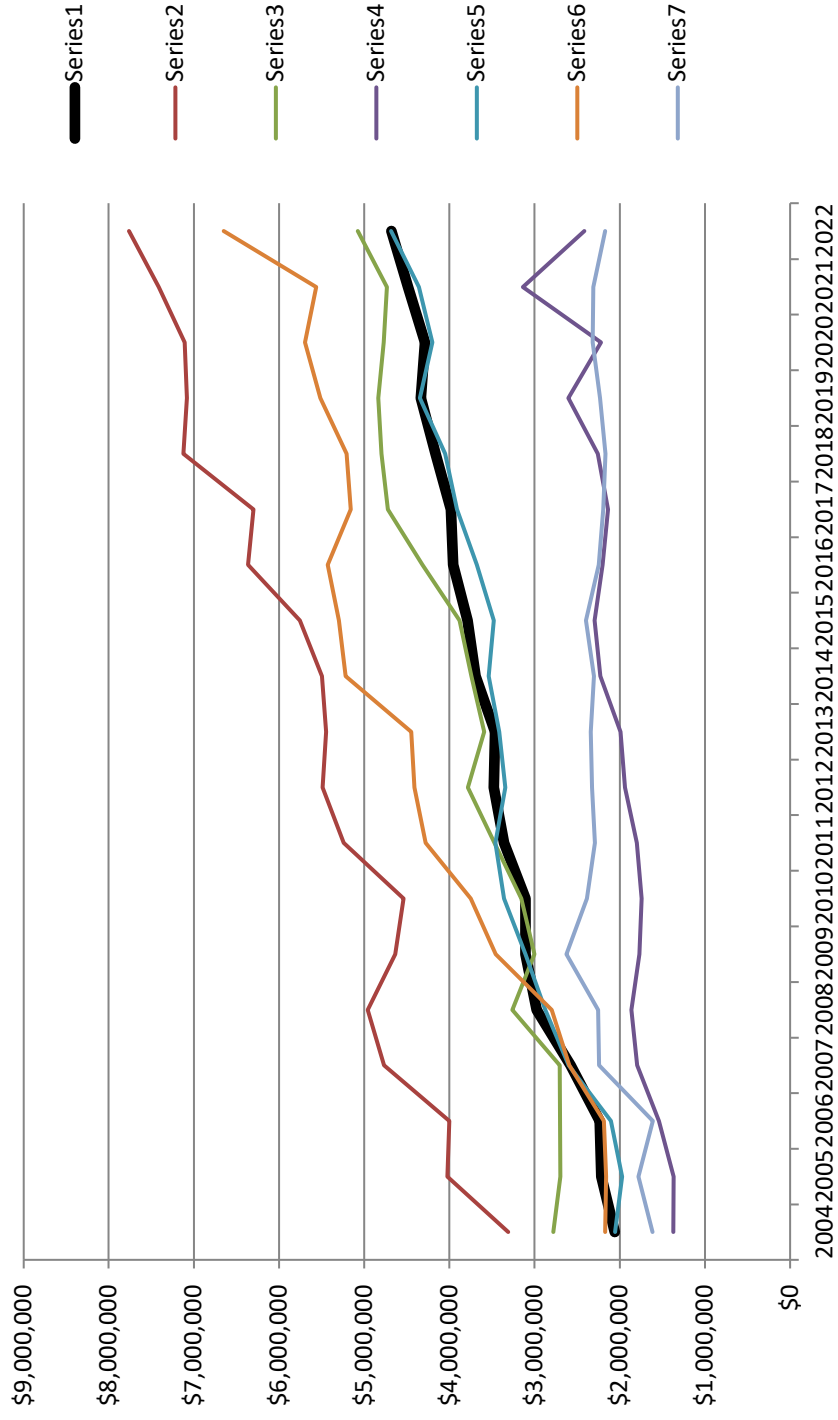
**TOWNSHIP MAINTENANCE AND CONSTRUCTION COSTS
2022 COUNTY ENGINEERS' REPORT
NON-COUNTY UNIT COUNTIES**

COUNTY	TOWNSHIP ROADS (MILES)					TOWNSHIP COSTS			TOWNSHIPS	
	CONC. ROADS	ASPHALT ROADS	GRAVEL ROADS	EARTH ROADS	TOTAL MILES	ROAD MAINT.	ROAD CONSTR.	TOTAL TOWNSHIP COST	IN COUNTY	TOTAL REPORTS RECEIVED
Atchison		0	359	106		\$1,070,807	\$0	\$1,070,807	8	6
Barber	0	5	674	2	681	\$1,304,418	\$0	\$1,304,418	16	12
Barton	0	0	1,220	0	1,220	\$2,878,943	\$0	\$2,878,943	22	22
Brown	0	1	582	190	773	\$1,953,734	\$48,000	\$2,001,734	10	10
Butler		108	916	81		\$4,022,364	\$142,759	\$4,165,123	29	20
Cowley	0	0	0	0	0	\$2,349,003	\$0	\$2,349,003	25	0
Decatur	0	0	320	648	968	\$563,939	\$0	\$563,939	25	0
Dickinson	0	4	717	476	1,197	\$2,156,850	\$0	\$2,156,850	24	24
Douglas	0	75	487	17	579	\$5,982,800	\$0	\$5,982,800	9	9
Edwards	0	0	0	0	0	\$0	\$0	\$0	10	0
Ellsworth	0	15	542	155	712	\$965,342	\$0	\$965,342	19	19
Ford	0	0	943	214	1,157	\$2,198,126	\$0	\$2,198,126	14	4
Greenwood	0	0	747	0	747	\$915,064	\$0	\$915,064	15	13
Harvey	0	0	604	0	604	\$1,615,378	\$0	\$1,615,378	15	15
Kingman	0	0	456	559	1,015	\$2,028,008	\$0	\$2,028,008	23	23
Logan	0	0	0	665	665	\$93,575	\$0	\$93,575	11	0
Marshall	0	0	651	488	1,139	\$2,015,628	\$0	\$2,015,628	25	25
McPherson	1	2	1,098	150	1,251	\$4,632,772	\$251,193	\$4,883,965	25	25
Meade	0	0	568	56	624	\$748,949	\$0	\$748,949	9	9
Mitchell	0	0	35	111	146	\$88,546	\$0	\$88,546	17	4
Nemaha	0	3	470	487	960	\$2,284,186	\$0	\$2,284,186	20	20
Osage	0	0	874	0	874	\$1,576,968	\$0	\$1,576,968	16	16
Osborne	0	0	327	730	1,057	\$837,020	\$0	\$837,020	23	0
Pawnee	0	2	674	229	905	\$1,738,751	\$0	\$1,738,751	21	21
Reno	0	0	0	1,652	1,652	\$5,503,648	\$0	\$5,503,648	31	31
Rice	0	0	768	127	895	\$1,871,374	\$12,285	\$1,883,659	20	20
Riley	0	13	312	52	377	\$1,029,622	\$0	\$1,029,622	14	14
Russell	0	0	664	169	833	\$934,786	\$0	\$934,786	12	12
Sedgwick	0	49	985	0	1,034	\$7,505,209	\$0	\$7,505,209	26	26
Shawnee	0	361	334	3	698	\$5,777,683	\$0	\$5,777,683	12	11
Stafford	0	0	654	426	1,080	\$1,377,137	\$0	\$1,377,137	21	21
Sumner	4	12	1,022	591	1,629	\$4,028,575	\$0	\$4,028,575	30	30
Thomas	0	0	0	0	0	\$2,143,285	\$0	\$2,143,285	13	0
Wabaunsee	0	0	672	88	760	\$1,411,302	\$0	\$1,411,302	13	0
Washington	0	0	706	504	1,210	\$1,726,673	\$0	\$1,726,673	25	24
Totals	5	650	19,381	8,976	27,442	\$77,330,464	\$454,237	\$77,784,701	648	486

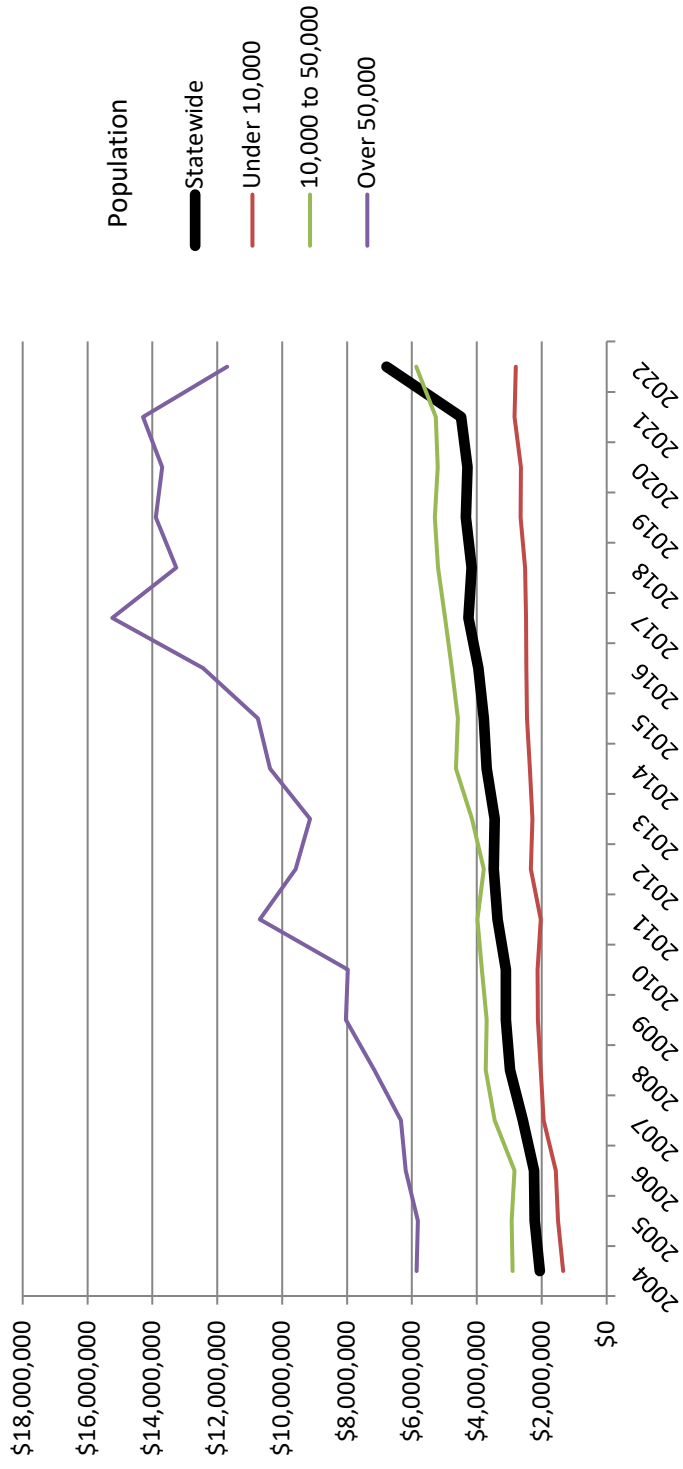
Number of Counties Submitting County Engineer Report



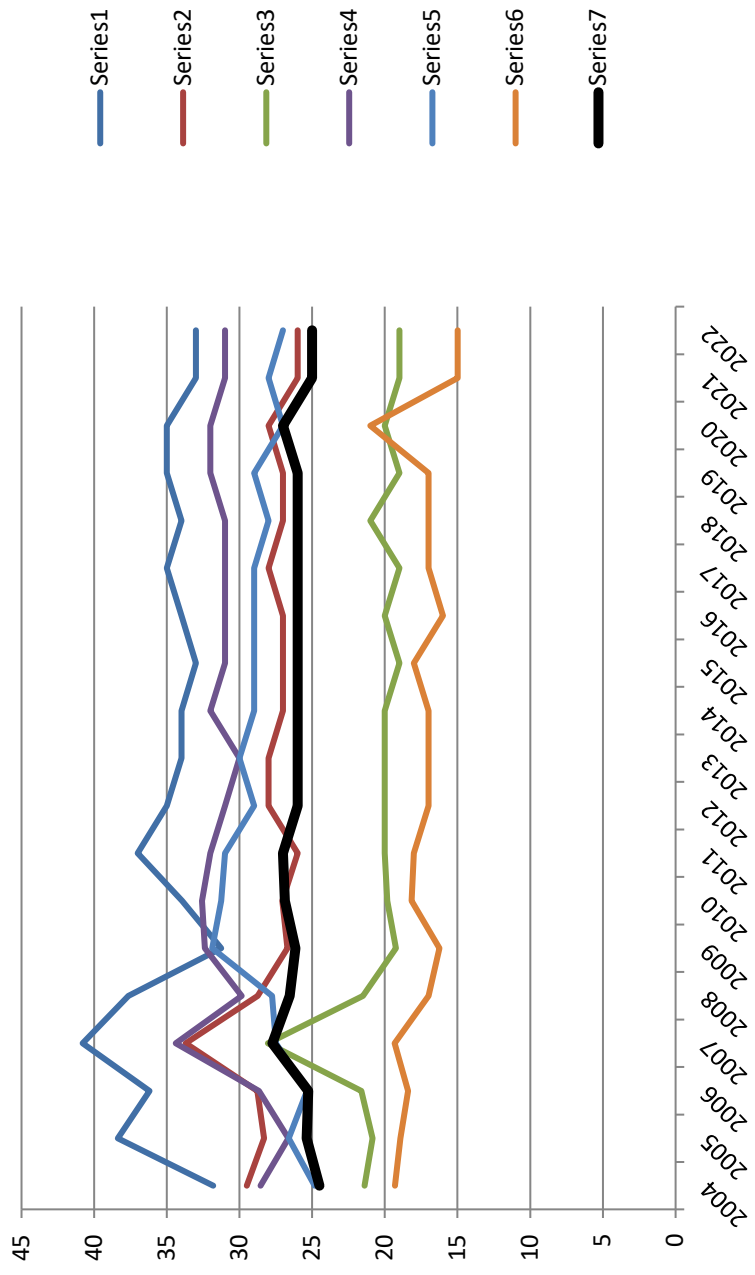
Average Annual Budgets By District



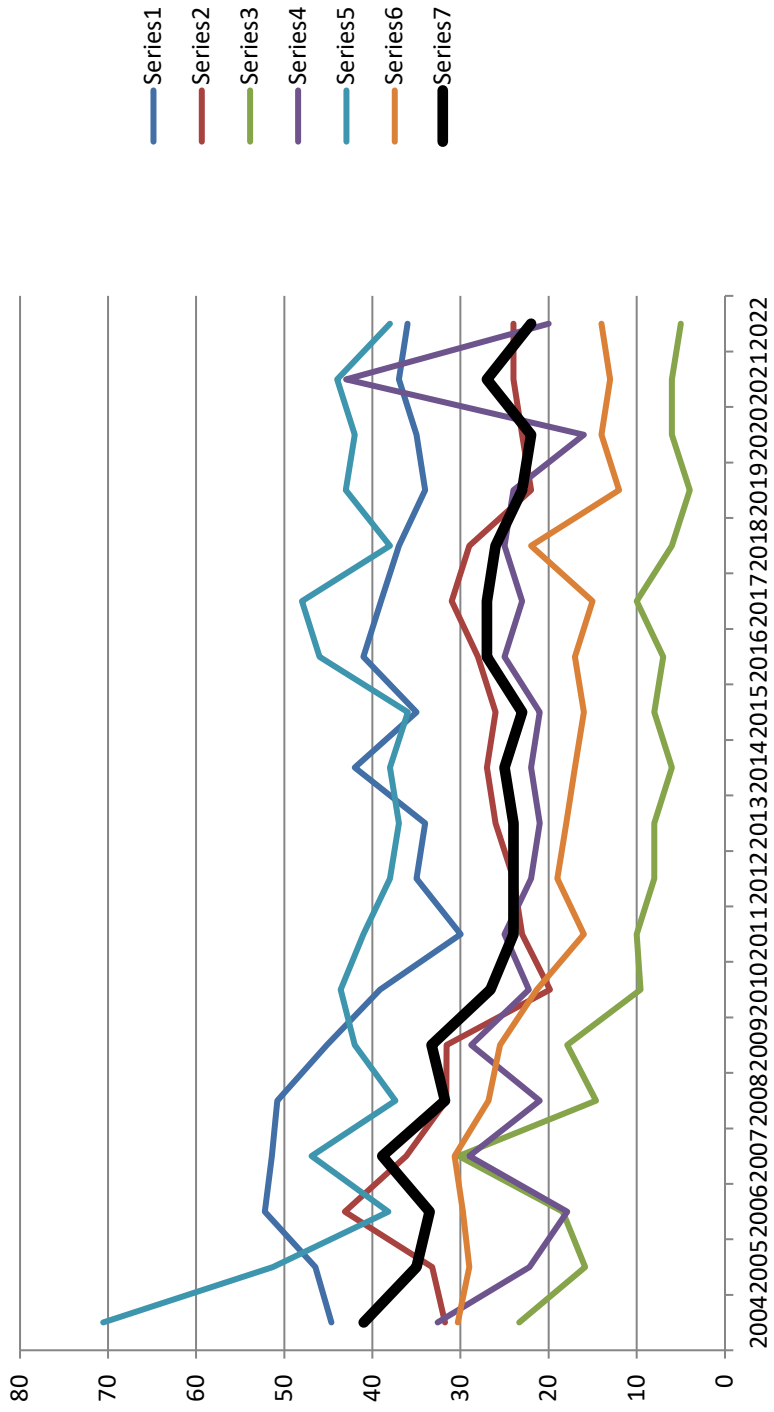
Average Annual Budgets By Population



Average No. of Road & Bridge Employees



Average Miles of Maintenance (Overlay/Seals)



Average Miles of County Road Constructed

