



WELCOME

PLEASE SIGN IN

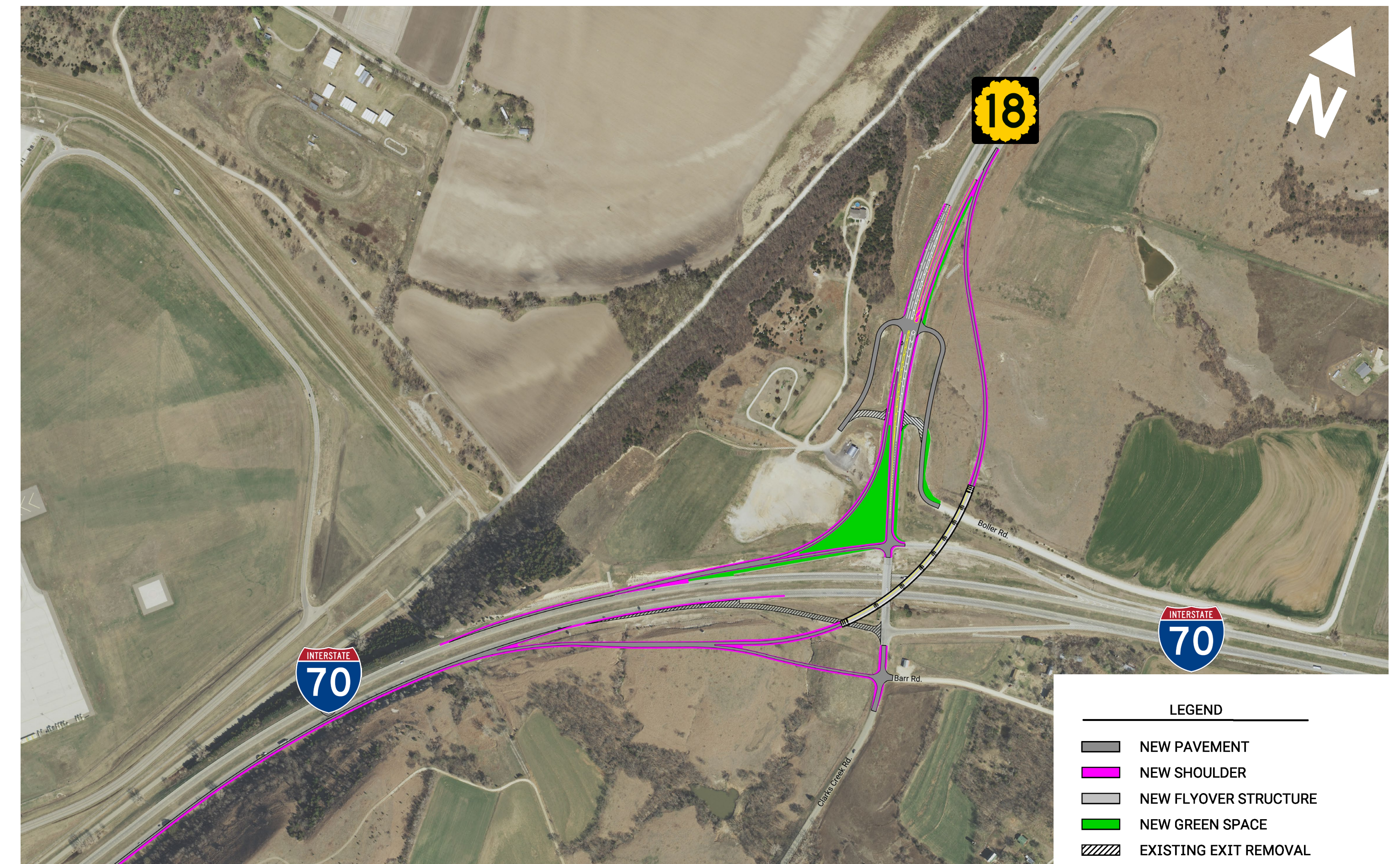
K-18 and I-70 Interchange Project in Geary County

Project Overview



The Kansas Department of Transportation (KDOT) studied several options to improve the K-18/I-70 interchange from I-70 eastbound to K-18 northbound in Geary County.

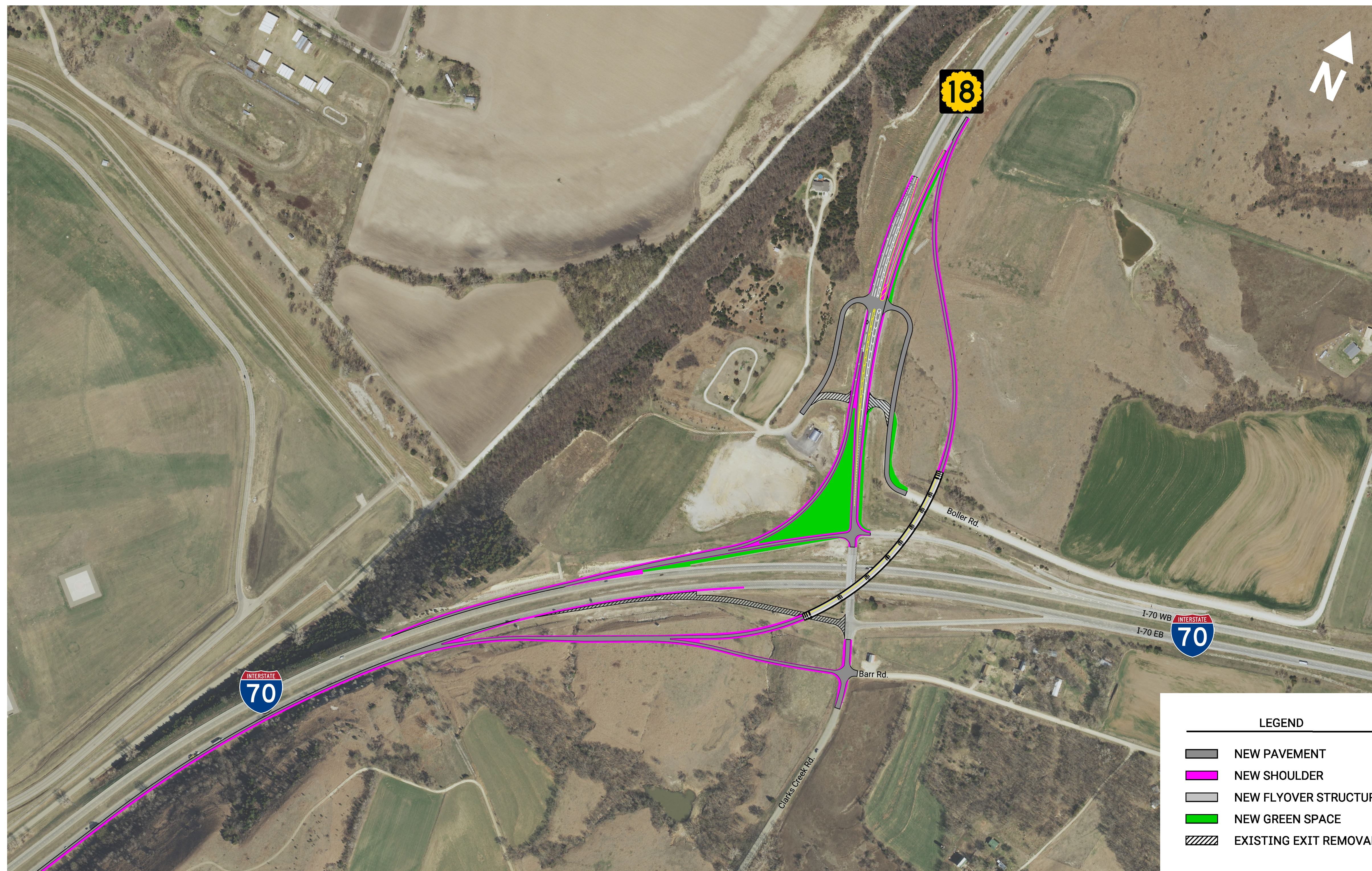
- A flyover bridge going over I-70 was identified as the preferred option.
- Additional improvements are planned for the southbound to westbound I-70 onramp.
- The project will update the I-70/K-18 interchange and add a two-mile auxiliary lane.
- The existing interchange will remain open both through and after construction.



Flyover Design Map



Flyover Design Map



**K-18 and I-70
Interchange Project**
Geary County



For more information, please visit:
ike.ksdot.gov/k18-i70-interchange



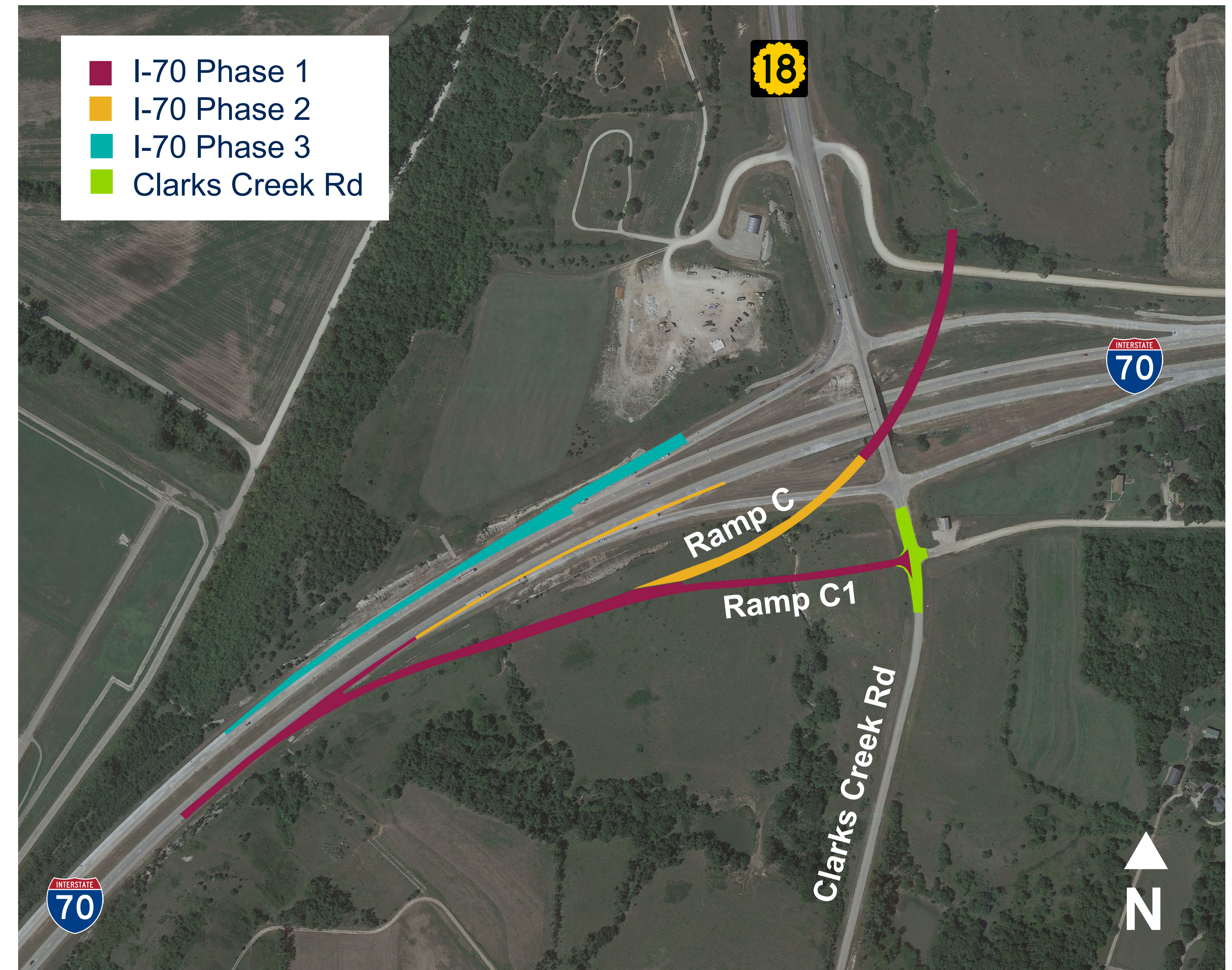
Pub# KA-6018-01.DB3.2024.08

Phases for I-70



The existing interchange, including the existing bridge, will remain open during the day both through and after construction.

- Parts of Phase 1 and 2 may be constructed concurrently.
- For all other phases, work initiated shall be completed prior to beginning the next phase.
- Contractor would maintain access to driveways and coordinate with property owners.



I-70 & Clarks Creek Rd Construction Phases



Phases for K-18



Phase 1: Construct K-18 turn lane improvement.

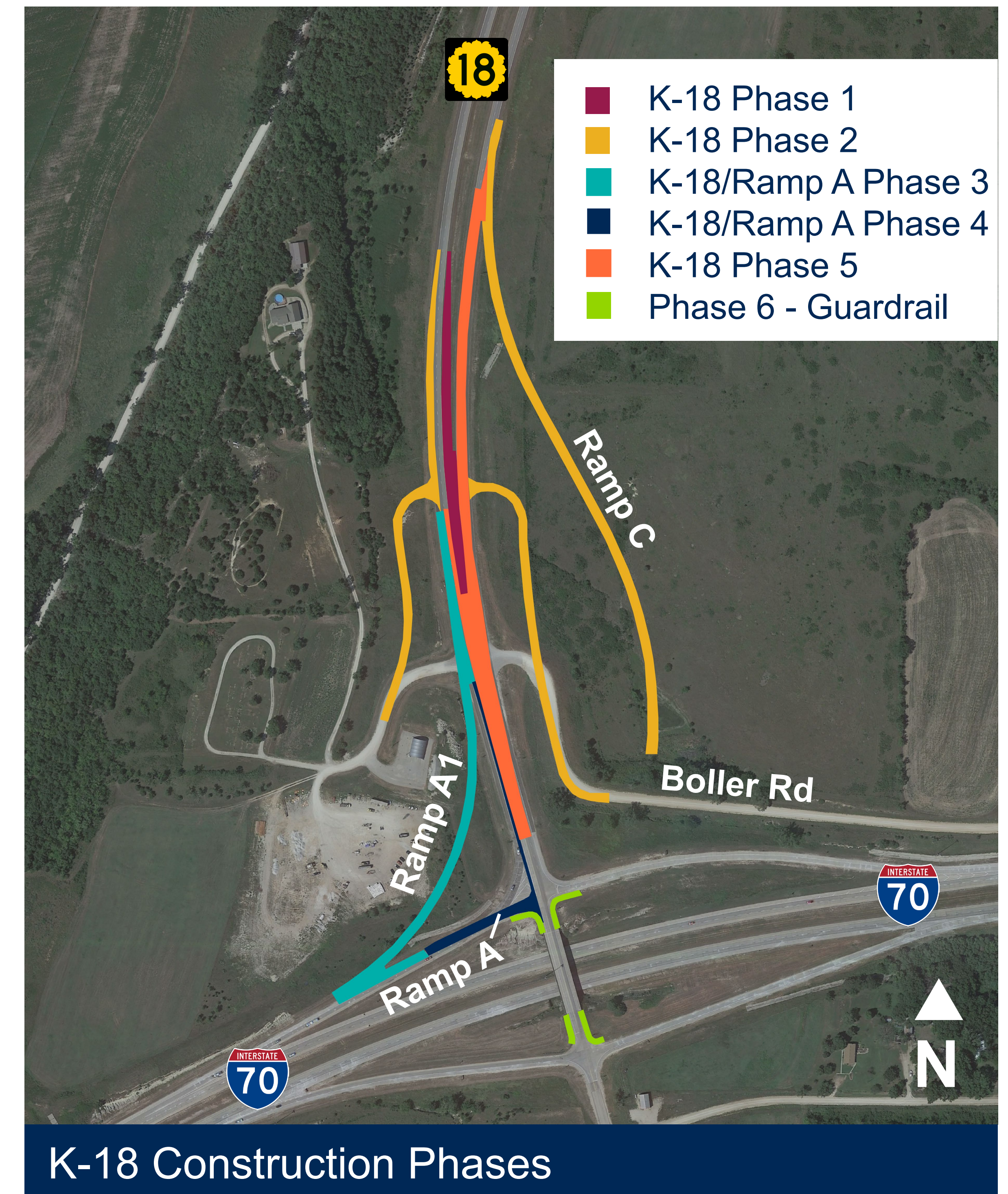
Phase 2: Construct new Boller Road, Ramp C and right-turn lane to Boller Road.

Phase 3: Construct K-18 right-turn lane and Ramp A1. Remove existing Boller Road approaches.

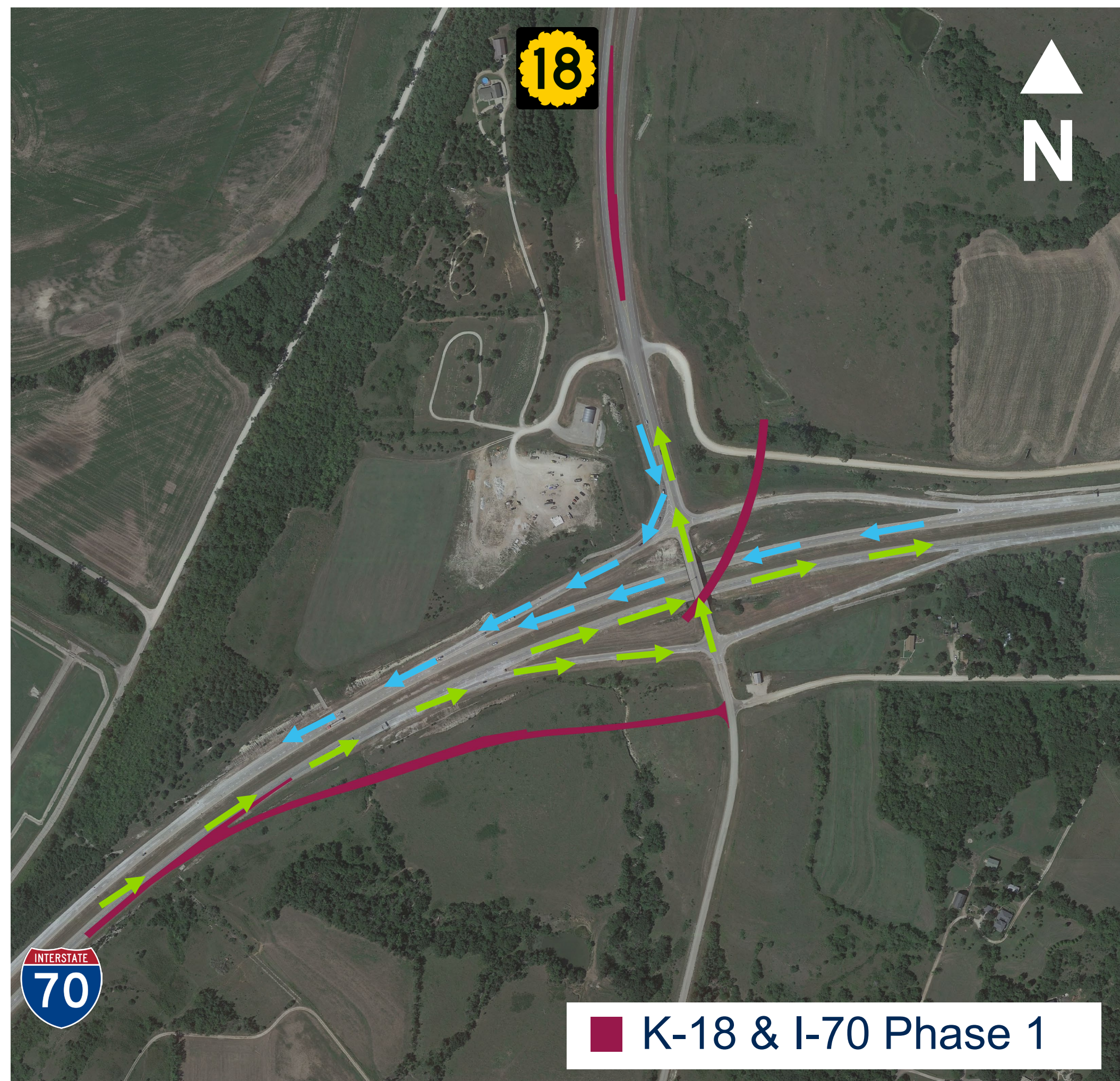
Phase 4: Construct K-18 outside shoulder and portions of Ramp A.

Phase 5: Remove and replace top layer of existing asphalt for northbound and southbound K-18 outside lanes and K-18 median.

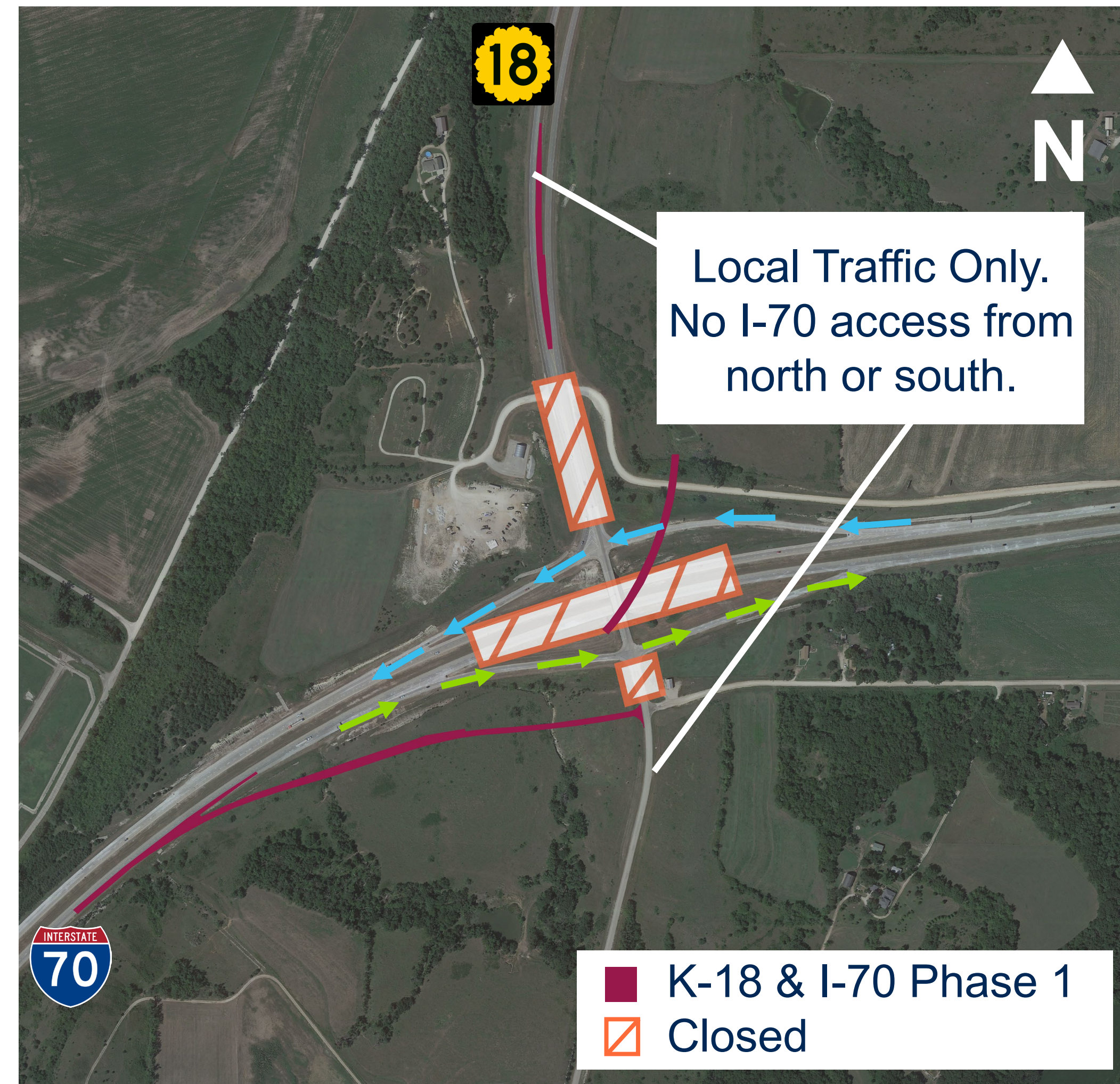
Phase 6: Install guardrail at K-18 bridge.



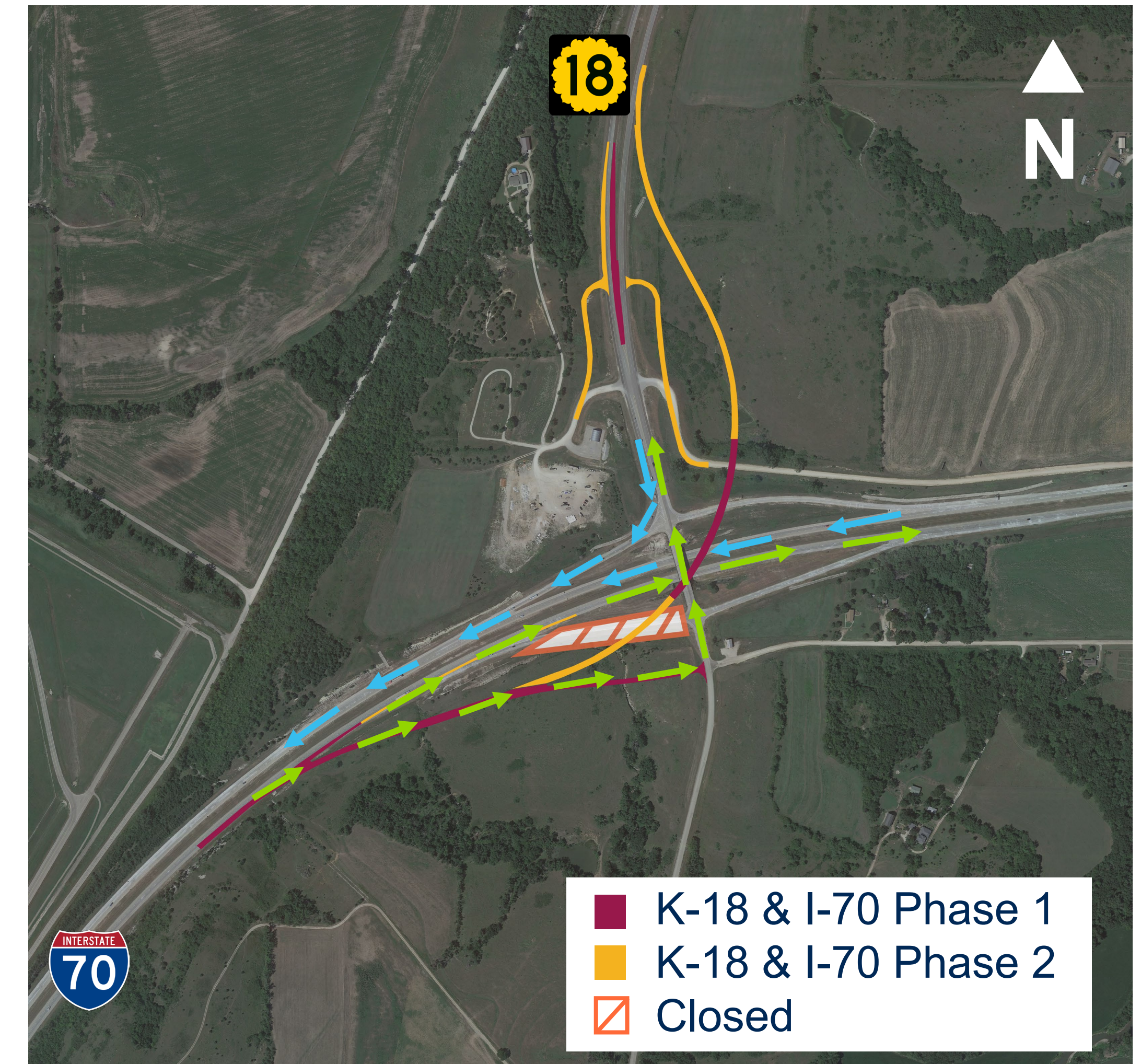
Traffic During Phases



Traffic during Phase 1A



Traffic closures at night during Phase 1B. Nighttime closures are anticipated to happen for 1-2 weeks.



Traffic during Phase 2



Project Timeline



Phase	2020	2021	2022	2023	2024	2025	2026
Discovery Phase KDOT engages with the public to determine the purpose and need for the project.			 				
Preliminary and Final Design KDOT presents its initial solutions and asks the public for feedback.							
Invitation to Bid on Project Contractors and interested parties are notified the project is out for bid with selection and construction to begin soon.							
Construction KDOT continues to communicate with interested parties throughout construction including information on road closures, detours and other construction impacts.							



Stakeholder Engagement



Public Meeting



KDOT Wants to Hear From You



Project Comments

Submit your comments today or online through **September 4, 2024**

For more information visit:
ike.ksdot.gov/k18-i70-interchange



Use your phone camera to hover over the QR code then click to view the project webpage.

Project Contacts

Ashley Perez

Public Information Officer

Ashley.Perez@ks.gov

785-515-6790

Ryan Robinson

Project Manager

RKRobinson@garverusa.com

913-955-2367

KDOT's IKE Transportation Program



What is IKE:

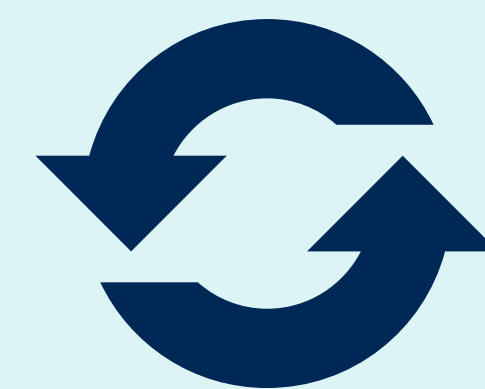
A nearly **\$10 billion investment** in the future of Kansas. This 10-year program and the transportation improvements it will deliver play a key role in making roads safer, supporting economic growth and creating more options and resources for Kansans and their communities.



How to get involved:

Every two years KDOT engages the public through Local Consult listening sessions held across the state. Kansans weigh in on modernization and expansion transportation priorities in each region of the state. The next round of Local Consult will be in 2025.

The IKE Program (2020-2023) has delivered:



PRESERVATION

- \$1.7 billion in preservation projects
- 5,200 roadway miles improved
- 250 bridges improved



HIGHWAY EXPANSION + MODERNIZATION PROJECTS

- \$2.1 billion in Construction Pipeline
- \$723 million constructed or under construction
- 23 projects in Development Pipeline



ECONOMIC DEVELOPMENT

- \$87 million in program investments
- \$5.4 billion in capital investment statewide
- More than 10,000 jobs created

In 2023, KDOT awarded more than \$127 million to fund local projects to improve Kansas airports, bridges, rail, roadways and broadband infrastructure.



For more information, please visit:
ike.ksdot.gov/k18-i70-interchange

