



# WELCOME

**PLEASE SIGN IN**



**K-10/SOUTH LAWRENCE TRAFFICWAY (SLT)  
IN DOUGLAS COUNTY OPEN HOUSE**



**SCAN THE  
QR CODE  
TO SIGN IN**

# Project Overview



The K-10/South Lawrence Trafficway (SLT) is a vital corridor serving the local community and regional commuters. The K-10/SLT expansion project is focused on improving safety and mobility for the K-10/SLT corridor and surrounding roadways by expanding K-10/SLT to four lanes and reconstructing interchanges in the area.

**SLT South Project: Final design has been completed, right of way acquisitions are underway and utilities are being relocated. A contractor has been selected for the south project and construction began in September 2024.**

Improvements to the K-10/SLT South Project include:

- **Widen K-10/SLT to a four-lane, median separated highway.** The entire West Leg of the K-10/SLT will be widened from two to four lanes. The lanes will be separated by a median. The K-10/SLT will be a fully access controlled highway.
- **Improve U.S. 59 and Clinton Parkway interchanges.**
- **Maintain Bob Billings Parkway and 6th Street interchanges.**
- **Add New Interchange at Wakarusa.** The existing intersection will be eliminated and access to Wakarusa and 27th Street will now be through a grade separated interchange, which means K-10 will now go over Wakarusa and 27th Street. Traffic traveling along K-10 will no longer be signal controlled. Access to and from the local streets will be made via ramps.



# K-10/SLT Project Area



The K-10/SLT project area covers 9 miles. Due to the size and cost, expansion of the corridor will be completed in two phases.

**SOUTH PROJECT:** K-10, from U.S. 40/6th Street to U.S. 59, with reconstruction of the Wakarusa Drive, Clinton Parkway and U.S. 59 interchanges. Work began in September 2024 and is anticipated to be complete in 2028.

**NORTH PROJECT:** K-10, from U.S. 40/6th Street to N. 1800 Road/Farmer's Turnpike, with improvements to the Farmer's Turnpike and I-70/KTA interchange. Construction timing will be provided in the future but is expected to overlap with the south project.



# U.S. 59/Iowa Street Interchange



South Lawrence  
Trafficway (SLT)  
Douglas County

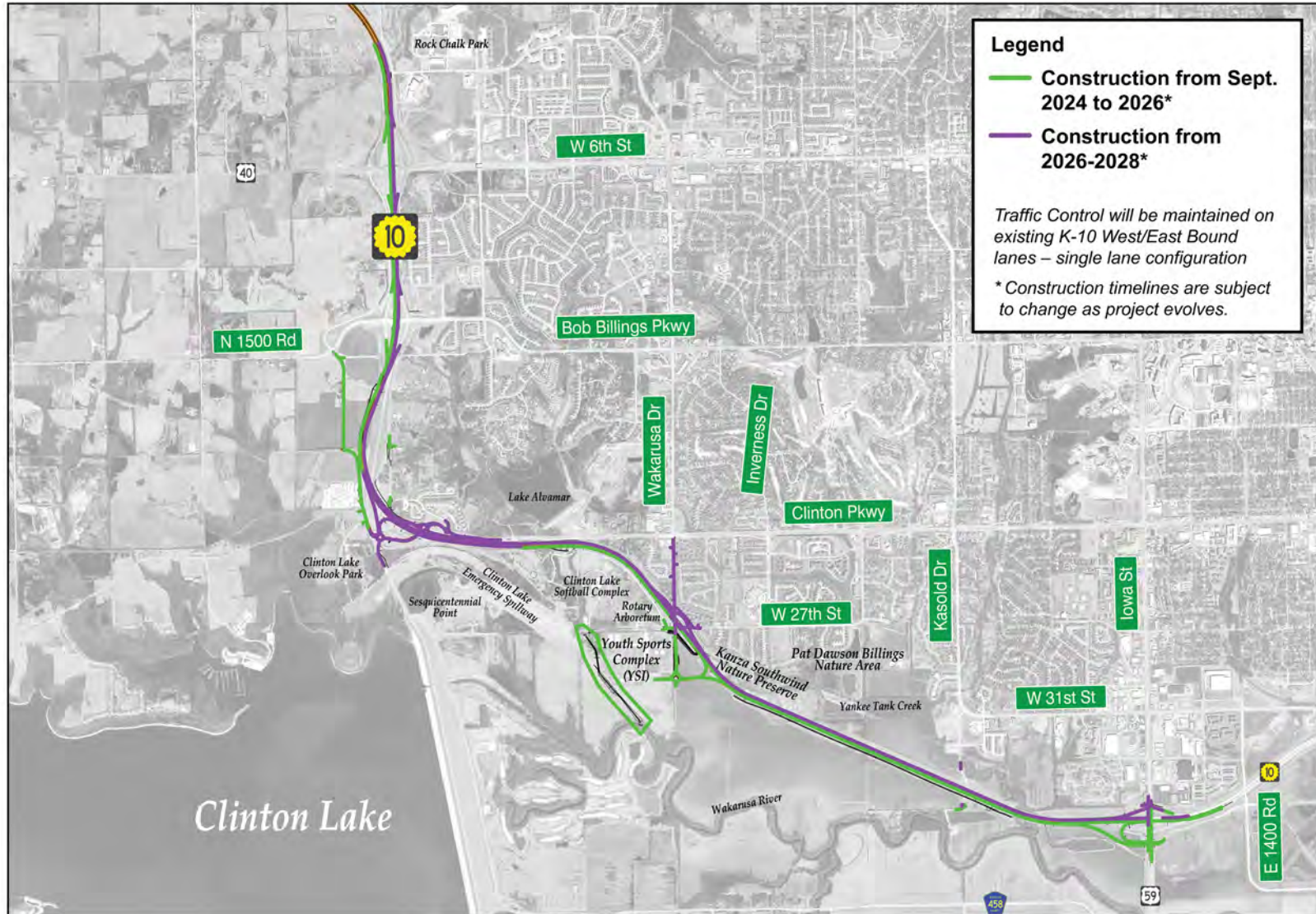


For more information, please visit:  
[www.slt-ks.ksdot.gov](http://www.slt-ks.ksdot.gov)

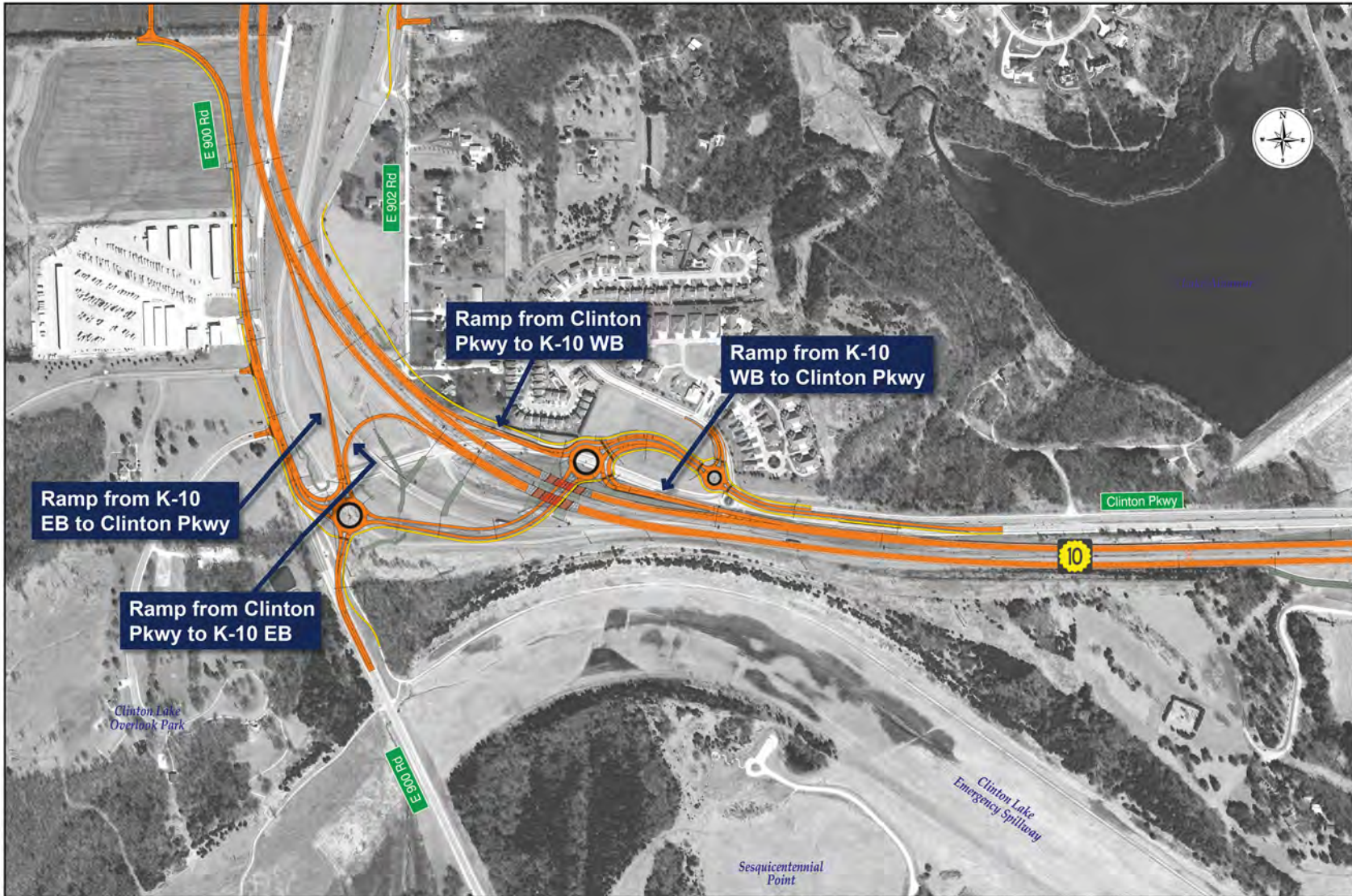


Pub# KA-3634.EX.2024.10

# Construction Phasing (South Project)



# Clinton Parkway Interchange



South Lawrence  
Trafficway (SLT)  
Douglas County



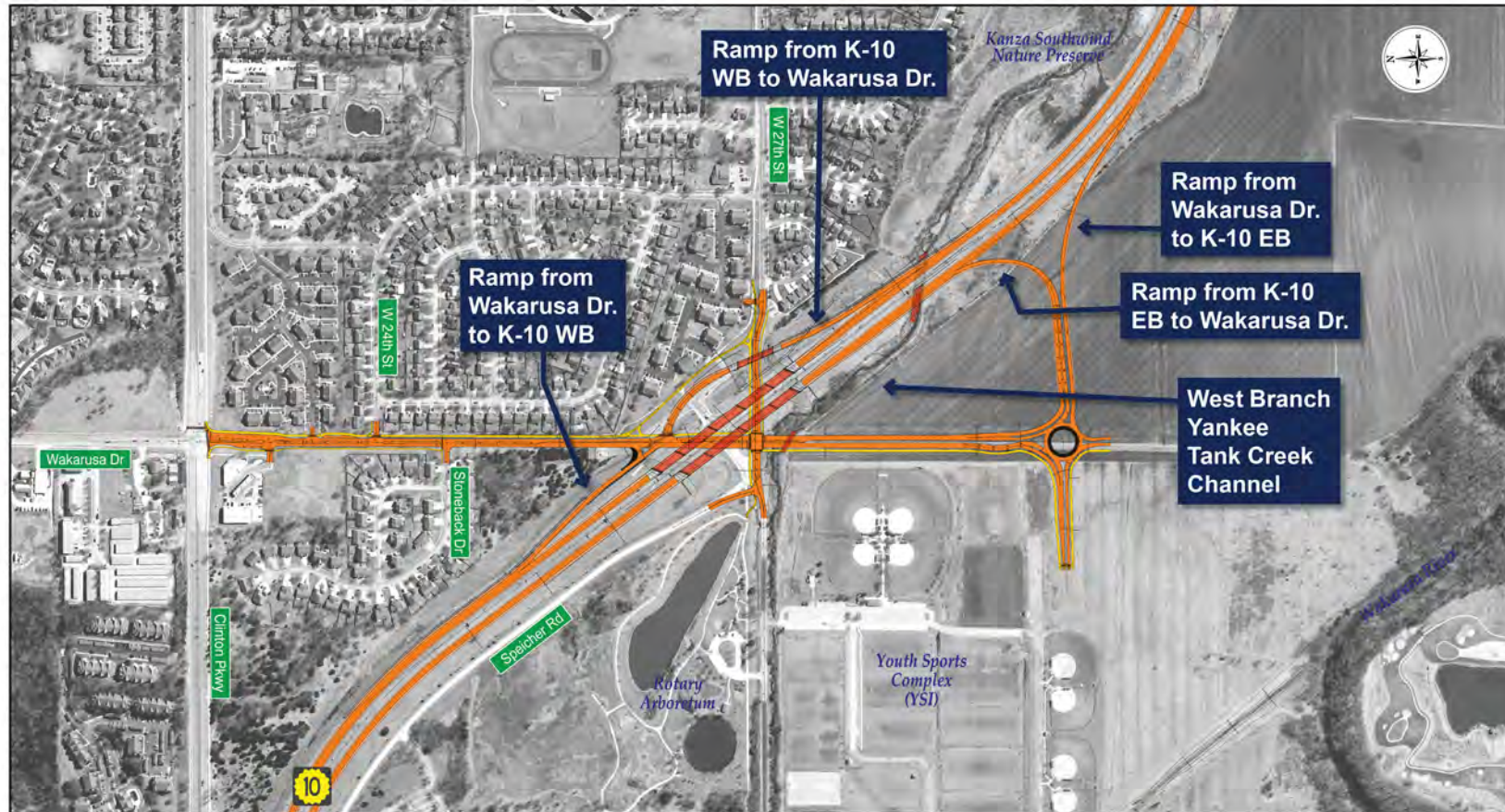
For more information, please visit:  
[www.slt-ks.ksdot.gov](http://www.slt-ks.ksdot.gov)



# Wakarusa Drive Interchange



The Wakarusa Drive Interchange is a critical improvement to the K-10/SLT corridor and transforms the current at-grade intersection to a grade-separated interchange, which means K-10 will go over Wakarusa Drive and 27th Street. Traffic traveling along K-10/SLT will no longer be signal controlled. Access to and from the local streets will be on ramps. This design significantly improves safety and traffic flow along this portion of the K-10/SLT.



# Noise Walls



Based on a noise study for the K-10/SLT south project corridor, noise walls were identified as reasonable and feasible in five areas. These noise wall locations were voted on by those adjacent property owners and residents who were identified as benefitted receptors, and will be constructed as part of the K-10/SLT project.

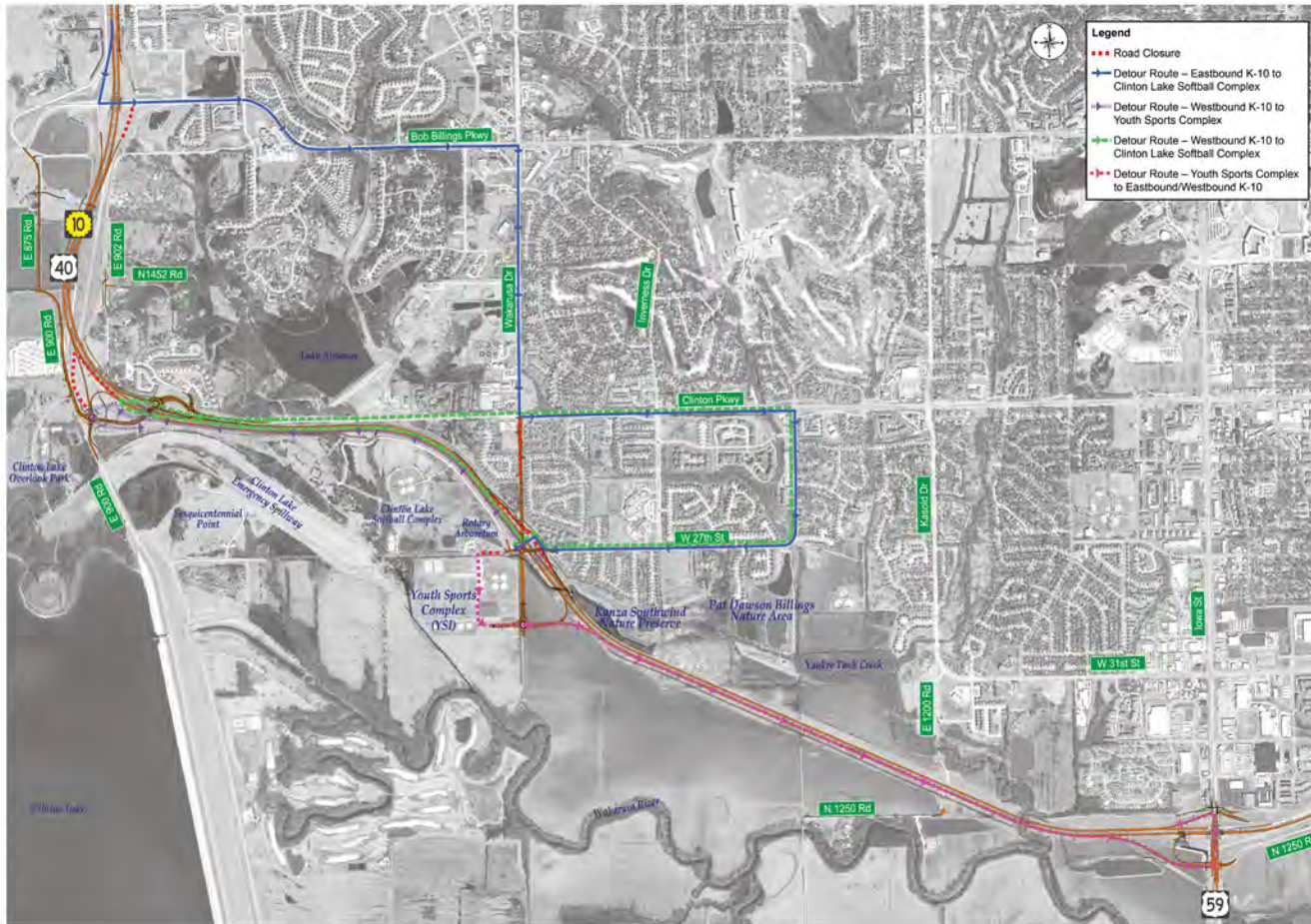
Noise walls will be installed in accordance with the construction phasing and will vary in average height from 10-20 feet, depending on location.



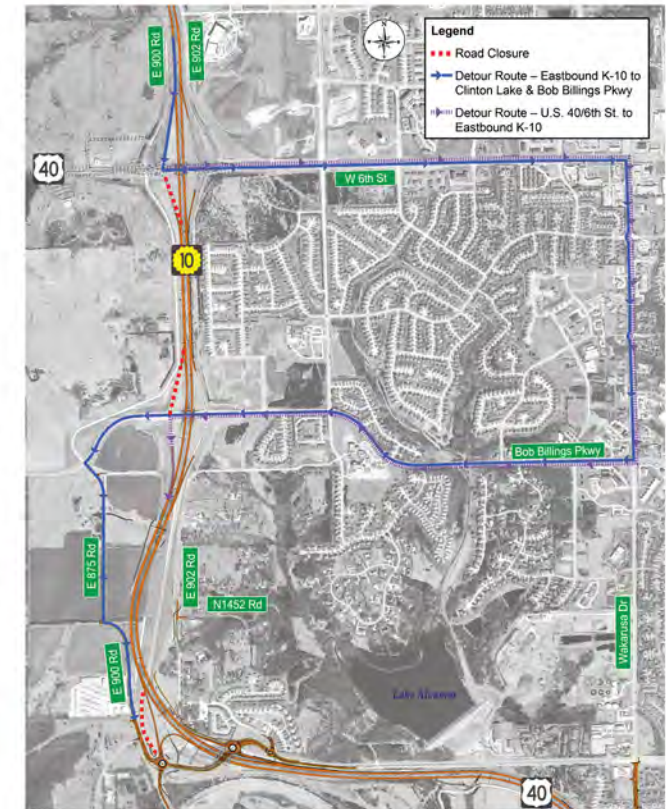


# 2025-2026 SLT Detours (South Project) ★★★★★

## Wakarusa Drive and 27th Street Closure



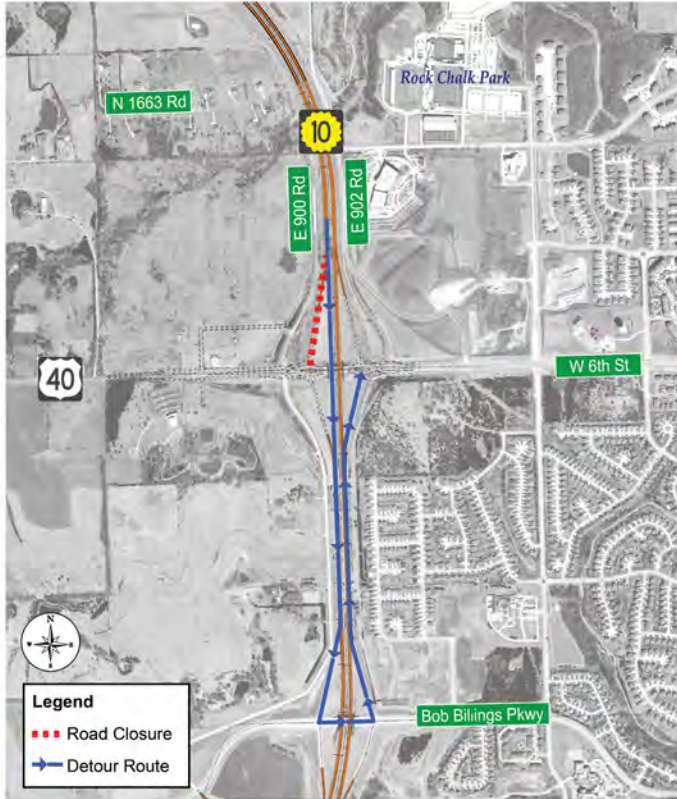
## Eastbound K-10 to Clinton Lake and U.S. 40/6th Street to Eastbound K-10 Closures



# 2025-2026 SLT Detours (South Project)



## Eastbound K-10 to U.S. 40/6th Street Ramp Closure



## Southbound U.S. 59/Iowa Street to Eastbound K-10 Ramp Closure



# Stay Informed



Sign up for project updates and ask questions by emailing the project team at [info@slt-ks.org](mailto:info@slt-ks.org).

Make sure to follow us at...

 **Facebook:** NEKansasKDOT

 **X/Twitter:** <https://x.com/NEKansasKDOT>

 **Website:** <https://slt-ks.ksdot.gov/>

## Project Contacts

**Steven Cross, P.E.**  
KDOT Project Manager  
[Steven.Cross@ks.gov](mailto:Steven.Cross@ks.gov)

**Kate Craft**  
Public Information Officer  
[Kate.Craft@ks.gov](mailto:Kate.Craft@ks.gov)



Use your phone camera to hover over the QR code then click to view the project webpage.

