

# PUBLIC MEETING



## K-4 Modernization Project in Saline County

CDC guidelines to help prevent the spread of COVID-19 will be followed.



For more information, please visit  
[ksdotike.org/k-4-saline-county](https://ksdotike.org/k-4-saline-county)

# PROJECT OVERVIEW



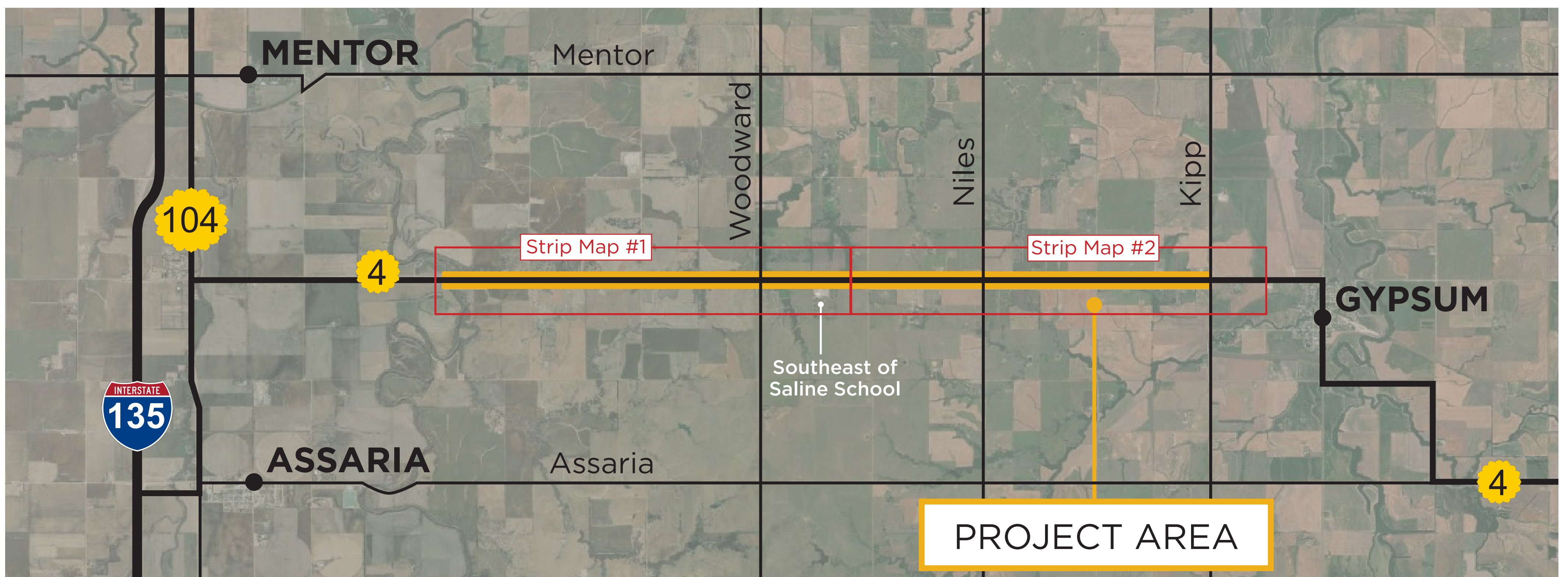
## INTRODUCTION

This project is part of the Kansas Department of Transportation (KDOT) IKE program. IKE is a 10-year program that addresses highways, bridges, public transit and other transportation needs across Kansas.

The program and associated projects are focused on making roads safer, supporting economic growth and creating more options and resources for Kansans and their communities.

## PROJECT AREA

The project is located about 2 miles east of the K-4/K-104 junction and extends about 7 miles east to Kipp Road. The new alignment of K-4 will be offset to the north through a majority of the project limits to improve sight distance, improve roadside safety (flatten side slopes) and add paved shoulders. Traffic will be maintained during construction via existing K-4. Temporary widening or closures with detours may be required at the eastern limits of the project.



## TENTATIVE SCHEDULE

A previous study included two public meetings in October 2013 and November 2014. The project was restarted in the IKE Development Pipeline in June 2021.

IKE Development Pipeline	
Project Restart	June 2021
3rd Public Input Meeting	December 2021
30% Design Plans	December 2021
4th Public Input Meeting	April 2022
60% Design Plans	May 2022
90% Design Plans	December 2023
100% Design Plans	April 2024

## FUNDING & CONSTRUCTION

Final plans, cost estimates and phasing will be developed based on public input received throughout the process.

The estimated project construction cost is approximately \$20 million. Cost estimates will be refined throughout the design phase.

The K-4 modernization project is in the IKE Development Pipeline. While a construction letting has not yet been funded at this time, it will be evaluated as the design process continues.



# PUBLIC INPUT



## 2021 OPEN HOUSE MEETING

A public open house for this project was held on December 8, 2021 at the Southeast of Saline School. The meeting was advertised in press releases, local newspapers, on social media and mailed postcards. The meeting provided an opportunity for the community to view exhibits and maps of the proposed improvements, provide input and speak one-on-one with project staff.

Nearly thirty individuals attended the public open house and provided input. Additionally, ten comments were received through the project website, email or telephone communication with KDOT staff.

## PROJECT BENEFITS

- Profile changes improve sight distances at intersections and driveways
- Paved shoulders and flattened slopes enhance safety for all users
- Improved turn lanes and access points enhance safety and traffic flow near Southeast of Saline School
- Offset alignment to the north enables traffic to be maintained during construction

## PREVIOUS PUBLIC INPUT

Project questions and concerns generally related to property impacts, access points, a potential increase in truck traffic or noise and the large scope of the project.

Overall, the design has been optimized to limit construction impacts as possible and minimize impacts to adjacent properties.

*The **table** below summarizes some of the location-specific input and how it has been considered in the updated corridor design.*

LOCATION	PUBLIC INPUT	DESIGN UPDATES
Southeast of Saline School	Improve safety and traffic flow near Southeast of Saline School	Enhanced turn lanes and added second entrance to school east of the existing main entrance
Niles Road	Consider access to nearby residences, agricultural facilities and fields	Modified grading to minimize access impacts to nearby residences, agricultural facilities and internal circulation patterns
Whitmore Road	Concern regarding loss of direct access to K-4 and proposed frontage road to access Niles Road	Consolidated driveways to a single access point on K-4 with adequate spacing and sight distance from the Whitmore Road intersection
Kipp Road	Consider access to nearby businesses; Concern regarding loss of mature landscaping within KDOT right-of-way	Provided new driveways for businesses while ensuring safe intersection operations; Increased intersection turn radius for trucks; Refined profile to minimize aesthetic impacts as possible
East Project Limits	Evaluate other detour options to avoid impacts required for the shoofly construction phasing	Detour options were re-evaluated and the shoofly is the preferred alternative. The design was refined to reduce impacts.

*See members of the project team to discuss specific locations or concerns.*



# SHARE YOUR THOUGHTS!



Your input is important! There are multiple ways to share your thoughts about the K-4 modernization project in Saline County either in-person or online.

## 1 REVIEW THE CONCEPT

Review the draft roadway alignment and other potential improvements presented on the following tables.

## 2 ASK THE PROJECT TEAM

Several members of the project team are available to provide information and answer questions.

Based on CDC guidelines to help prevent the spread of COVID-19, please be respectful of physical distancing as possible.

## 3 COMPLETE A COMMENT CARD

Provide additional input or questions via a comment card. Comments may also be provided on the project website.

## 4 VISIT THE PROJECT WEBSITE

The same information and feedback opportunities are also provided online if you would like to provide more input at a later time.

Visit [ksdotike.org/k-4-saline-county](https://ksdotike.org/k-4-saline-county) after the meeting and encourage others to participate online as well.

**Comments will be accepted from April 8 to April 22.**

