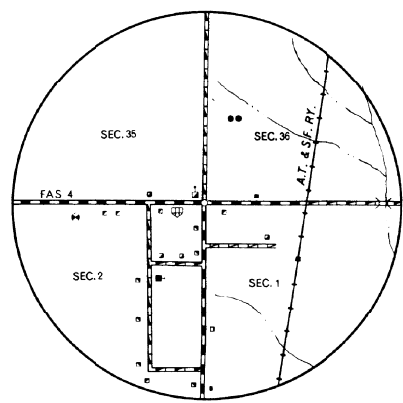
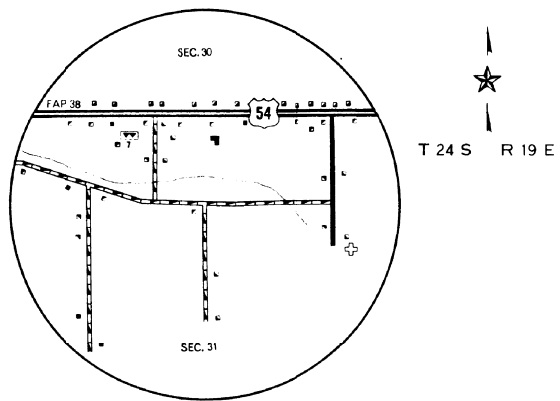


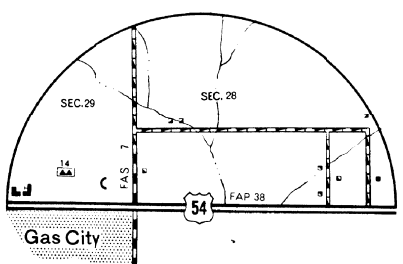
Geneva  
T 23 S R 17 E



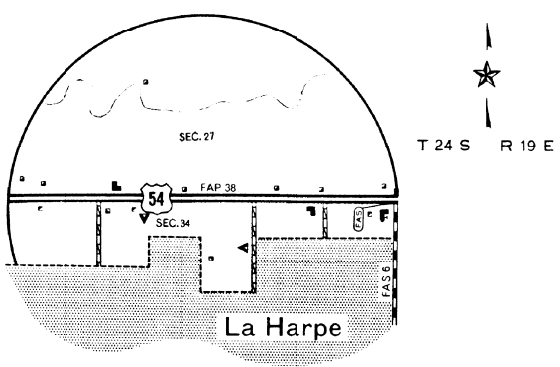
Carlie  
T 23-24 S R 19 E



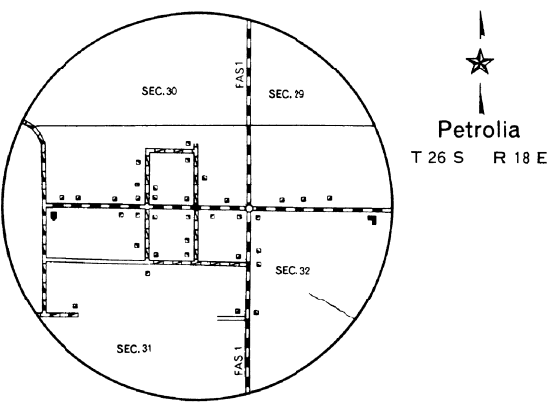
Gas City  
T 24 S R 19 E



Gas City  
T 24 S R 19 E

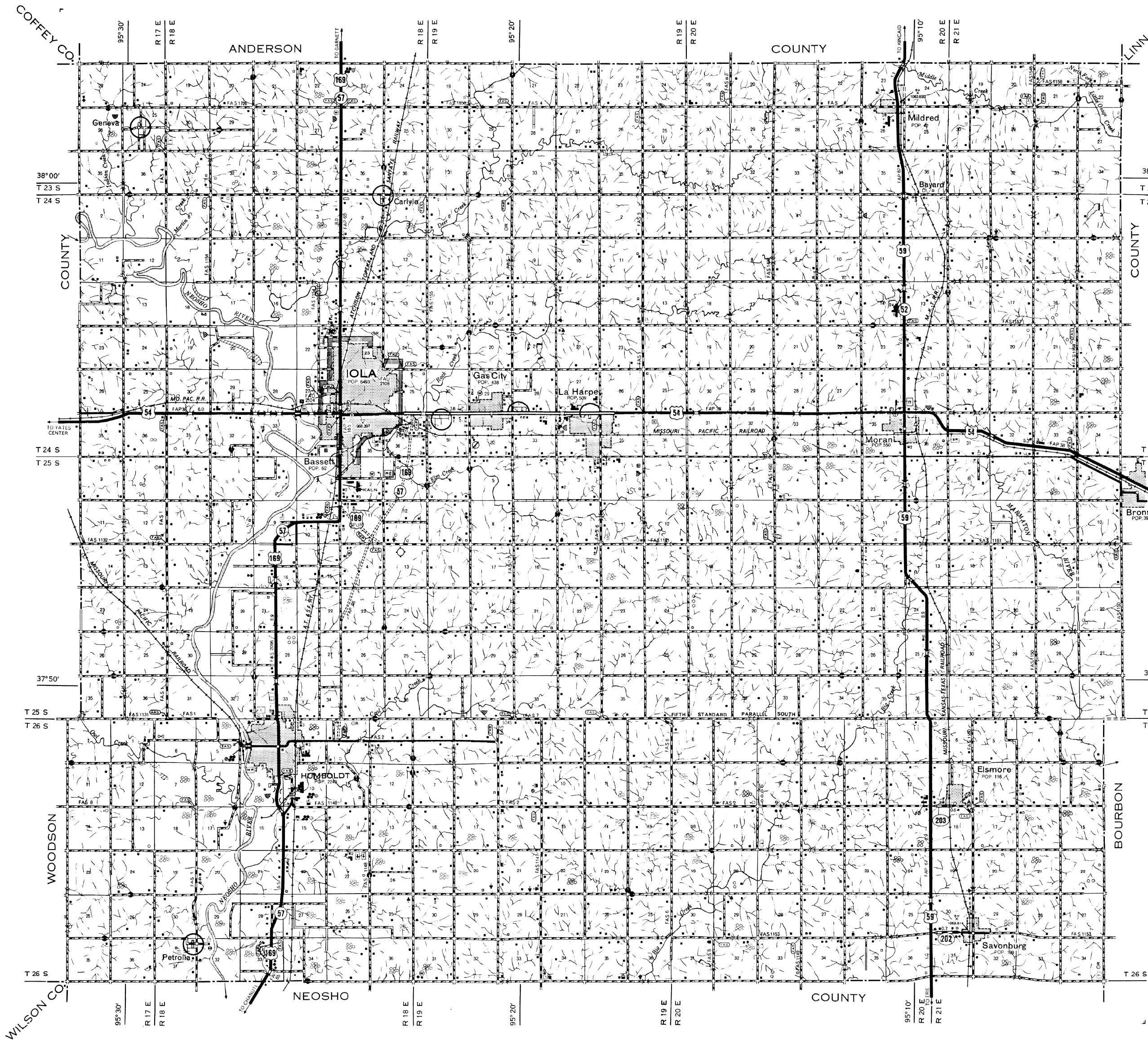


La Harpe  
T 24 S R 19 E



Petrolia  
T 26 S R 19 E

ENLARGEMENT SCALE  
0 1 2 MILE



**LEGEND**

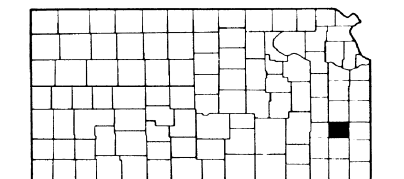
ROADS AND ROADWAY FEATURES		CONSERVATION AND RECREATION	
Primitive Road (Type A)	Playground, Ball Field, Etc.	Public Ground	Public Ground
Unimproved Road (Type B)	Swimming Pool	State Park	State Park
Graded and Drained Road (Type C)	Scenic Site	State Park (No Remains)	State Park (No Remains)
Soil Surfaced Road (Type D)	Tennis Court or Swimming Pool	State Park (Remains)	State Park (Remains)
Gravel or Stone Road	Tourist Court or Motel	State Park (Remains - Cabins or Cottages)	State Park (Remains - Cabins or Cottages)
Not Graded or Drained (Type E-1)	Camp Site	State Park (Remains - Permanent Cabins or Cottages)	State Park (Remains - Permanent Cabins or Cottages)
Gravel or Stone Road	Camp or Lodge (Permanent Site With Building)	State Park (Remains - Permanent Cabins or Cottages)	State Park (Remains - Permanent Cabins or Cottages)
Graded and Drained (Type E-2)	Small Park (SP-State, CP-County, MP-Municipal, SR-Safety Rest Area)	State Park (Remains - Permanent Cabins or Cottages)	State Park (Remains - Permanent Cabins or Cottages)
Gravel or Stone Road With	Small Park (SP-State, CP-County, MP-Municipal, SR-Safety Rest Area)	State Park (Remains - Permanent Cabins or Cottages)	State Park (Remains - Permanent Cabins or Cottages)
Graded Surface (Type E-3)	Small Park (SP-State, CP-County, MP-Municipal, SR-Safety Rest Area)	State Park (Remains - Permanent Cabins or Cottages)	State Park (Remains - Permanent Cabins or Cottages)
Blumhouse Road-Low Type (Type F, G-1, H-1)	Small Park (SP-State, CP-County, MP-Municipal, SR-Safety Rest Area)	State Park (Remains - Permanent Cabins or Cottages)	State Park (Remains - Permanent Cabins or Cottages)
Paved Road (Type G-2, H-2, J, K, L)	Small Park (SP-State, CP-County, MP-Municipal, SR-Safety Rest Area)	State Park (Remains - Permanent Cabins or Cottages)	State Park (Remains - Permanent Cabins or Cottages)
Divided Highway	Small Park (SP-State, CP-County, MP-Municipal, SR-Safety Rest Area)	State Park (Remains - Permanent Cabins or Cottages)	State Park (Remains - Permanent Cabins or Cottages)
Highway With Full Curb and Access	Small Park (SP-State, CP-County, MP-Municipal, SR-Safety Rest Area)	State Park (Remains - Permanent Cabins or Cottages)	State Park (Remains - Permanent Cabins or Cottages)
Side Roads and Streets in Unincorporated Urban Compacts and Extensions of Local Roads Within Municipalities	Small Park (SP-State, CP-County, MP-Municipal, SR-Safety Rest Area)	State Park (Remains - Permanent Cabins or Cottages)	State Park (Remains - Permanent Cabins or Cottages)
4 Lane Undivided Highway	Small Park (SP-State, CP-County, MP-Municipal, SR-Safety Rest Area)	State Park (Remains - Permanent Cabins or Cottages)	State Park (Remains - Permanent Cabins or Cottages)
Projected Road	Small Park (SP-State, CP-County, MP-Municipal, SR-Safety Rest Area)	State Park (Remains - Permanent Cabins or Cottages)	State Park (Remains - Permanent Cabins or Cottages)
<b>Road System Designation</b>		<b>FARM UNITS, DWELLINGS, ETC.</b>	
Federal-Aid Interstate Highway System	Federal-Aid Interstate Highway System	Farm Unit	Farm Unit
Federal-Aid Primary Highway System	Federal-Aid Primary Highway System	Dwelling (Other Than Farm)	Dwelling (Other Than Farm)
Federal-Aid Secondary Highway System	Federal-Aid Secondary Highway System	Rows or Groups of Dwellings Closely Spaced (Figure Denotes Number of Dwellings)	Rows or Groups of Dwellings Closely Spaced (Figure Denotes Number of Dwellings)
Federal-Aid Urban Highway System	Federal-Aid Urban Highway System	Combined Dwelling and Store	Combined Dwelling and Store
Points Between Which Distances are Measured	Points Between Which Distances are Measured	Dwelling and Filing Station	Dwelling and Filing Station
Interstate Numbered Highway	Interstate Numbered Highway	Dwelling, Business, and Filing Station	Dwelling, Business, and Filing Station
State Highway System or State Numbered Highway	State Highway System or State Numbered Highway	Seasonal or Summer Colony Dwelling	Seasonal or Summer Colony Dwelling
End of Designated System or Market Route	End of Designated System or Market Route	Humane Society Quarters	Humane Society Quarters
<b>RAILROADS</b>		Church or Other Religious Institution	Church or Other Religious Institution
Railroad (Any Number of Tracks Used by a Single Operating Company or by Trains of Another Carrier Under Trackage Rights)	Railroad (Any Number of Tracks Used by a Single Operating Company or by Trains of Another Carrier Under Trackage Rights)	Church and School (Joint Use)	Church and School (Joint Use)
Railroads in Jurisdiction (Two or More Tracks of Separately Operated Companies on Adjacent Rights-of-Way)	Railroads in Jurisdiction (Two or More Tracks of Separately Operated Companies on Adjacent Rights-of-Way)	Cemetery	Cemetery
Abandoned Railroads (Track Retained)	Abandoned Railroads (Track Retained)	Railroad Crossing	Railroad Crossing
Railroad Station	Railroad Station	Grade Crossing	Grade Crossing
Grade Crossing	Grade Crossing	Railroad Above	Railroad Above
Railroad Bridge	Railroad Bridge	Railroad Below	Railroad Below
Military Field (Some Facilities Available)	Military Field (Some Facilities Available)	Railroad Bridge	Railroad Bridge
Airport Complete Facilities (Commercial or Municipal)	Airport Complete Facilities (Commercial or Municipal)	<b>AIRWAYS AND AIRPORTS</b>	
Landing Area or Strip (Including Private Air Fields)	Landing Area or Strip (Including Private Air Fields)	Group of Mixed Cultural Features Closely Spaced (Figure Above Denotes Number of Dwellings Included in the Group. Figures over individual units show number of each included regardless of order)	Group of Mixed Cultural Features Closely Spaced (Figure Above Denotes Number of Dwellings Included in the Group. Figures over individual units show number of each included regardless of order)
Away Light Station, General	Away Light Station, General	<b>INDUSTRIAL</b>	
Airport, General	Airport, General	Store or Small Business Establishment	Store or Small Business Establishment
<b>NAVIGATION</b>		Business and Post Office	Business and Post Office
Navigable Stream (No-Remainment navigation)	Navigable Stream (No-Remainment navigation)	Business and Filing Station	Business and Filing Station
<b>DRAINAGE</b>		Factory or Industrial Plant	Factory or Industrial Plant
Intermittent Stream (Narrow)	Intermittent Stream (Narrow)	New-Drift or Drift (Any Kind)	New-Drift or Drift (Any Kind)
Intermittent Stream (Wide)	Intermittent Stream (Wide)	Oil or Gas Well	Oil or Gas Well
Narrow Stream	Narrow Stream	Storage Tank (Gas or Oil) (Figure Denotes Number of Tanks)	Storage Tank (Gas or Oil) (Figure Denotes Number of Tanks)
Wide Stream	Wide Stream	Filing Station (Not Connected With Other Business)	Filing Station (Not Connected With Other Business)
Drainage Ditch	Drainage Ditch	Pumping Station (Oil or Gas)	Pumping Station (Oil or Gas)
Irrigation Ditch	Irrigation Ditch	Gauging or Pumping Station (General)	Gauging or Pumping Station (General)
Lake, Reservoir, or Pond	Lake, Reservoir, or Pond	Valve House	Valve House
Dry Lake Subject to Flood	Dry Lake Subject to Flood	Seasonal Industry (Cannery or Small Grain Mill)	Seasonal Industry (Cannery or Small Grain Mill)
Marsh or Swamp Land	Marsh or Swamp Land	Milk Depot, Creamery or Cheese Factory	Milk Depot, Creamery or Cheese Factory
Overlook Land	Overlook Land	Fruit or Nut Orchard	Fruit or Nut Orchard
<b>STRUCTURES</b>		Fruit or Produce Packing House	Fruit or Produce Packing House
Highway Bridge, General	Highway Bridge, General	Road Stand Farm Products Sales	Road Stand Farm Products Sales
(Total Span Greater Than 20 Feet)	(Total Span Greater Than 20 Feet)	Warehouse-General (If Government Add State or U.S.)	Warehouse-General (If Government Add State or U.S.)
Small Bridges Closely Spaced	Small Bridges Closely Spaced	Gran Elevator	Gran Elevator
<b>Bridges For Long River Crossings</b>		Group of Gran Storage Bins	Group of Gran Storage Bins
General	General	Greenhouse	Greenhouse
Arch	Arch	Nursery	Nursery
Truss or Gider (w. wood or steel)	Truss or Gider (w. wood or steel)	Stock Yard-Loading Pen or Corral	Stock Yard-Loading Pen or Corral
Carrieway Bridge	Carrieway Bridge	Stock Pen at Railroad Stop (Small)	Stock Pen at Railroad Stop (Small)
Highway Grade Separation	Highway Grade Separation	Gravel Pit	Gravel Pit
<b>Miscellaneous Structures</b>		Quarry	Quarry
Level Or Dike With Road	Level Or Dike With Road	Kiln or Oven (Lime, Clay Products, Coke, Etc.)	Kiln or Oven (Lime, Clay Products, Coke, Etc.)
Concrete Ford Or Dip	Concrete Ford Or Dip	Feed Lot	Feed Lot
Ford Road Established	Ford Road Established	Shopping Center	Shopping Center
Cattle Guard	Cattle Guard	Seasonal Business	Seasonal Business
Gate Access Road (Any Type)	Gate Access Road (Any Type)	Sawmill (Stationary)	Sawmill (Stationary)
<b>BOUNDARIES</b>		<b>EDUCATIONAL AND CORRECTIONAL INSTITUTIONS</b>	
State	State	Schoolhouse	Schoolhouse
County	County	Consolidated or Large School	Consolidated or Large School
Corporate Lines	Corporate Lines	Townhall, Grange, or Community Hall	Townhall, Grange, or Community Hall
Boundary Lines Established For Delimited Urban Places	Boundary Lines Established For Delimited Urban Places	Agricultural Experiment Station	Agricultural Experiment Station
Section Line	Section Line	Correctional Institution	Correctional Institution
Boundary To Mark Engagement Road	Boundary To Mark Engagement Road	Museum-General	Museum-General
Parks and Other Reservations National, State, County, or Municipal Park, Indian Reservation, National Monument, Federal Development Project	Parks and Other Reservations National, State, County, or Municipal Park, Indian Reservation, National Monument, Federal Development Project	Public Library	Public Library
Monument-Small, Historic Site	Monument-Small, Historic Site	<b>PUBLIC SERVICE FACILITIES</b>	
<b>CITY AND VILLAGE CENTERS</b>		Post Office	Post Office
State Capital	State Capital	Highway Garage	Highway Garage
County Seat	County Seat	Fire Engine House	Fire Engine House
Other Cities and Villages	Other Cities and Villages	Garbage or Rubbish Dump	Garbage or Rubbish Dump
Incorporated City or Village	Incorporated City or Village	Sanitary Disposal Plant	Sanitary Disposal Plant
Boundary Limits Fixed for Special Training Areas and Other Unincorporated Urban Places Delimited	Boundary Limits Fixed for Special Training Areas and Other Unincorporated Urban Places Delimited	Auto Salvage Yard	Auto Salvage Yard
<b>NATURAL FEATURES</b>		Transformer Station	Transformer Station
Proprietor Elevation-With Name	Proprietor Elevation-With Name	Power Plant	Power Plant
(Numerals Indicate Elevation Above Sea Level)	(Numerals Indicate Elevation Above Sea Level)	Power Substation	Power Substation
Sink or Depression	Sink or Depression	Booster Station	Booster Station
		Water Supply, Stand Pipe, or Tank	Water Supply, Stand Pipe, or Tank
		Radio Station (With Call Letters)	Radio Station (With Call Letters)
		Radio Range Station	Radio Range Station
		Water Treatment Plant	Water Treatment Plant
		Juneyard	Juneyard
		U.S. Corps of Engineers Office	U.S. Corps of Engineers Office
		U.S. Army Camp, Barracks, or Other Military Post	U.S. Army Camp, Barracks, or Other Military Post
		Trangulation Station	Trangulation Station
		Bench Mark (With Elevation)	Bench Mark (With Elevation)

# GENERAL HIGHWAY MAP ALLEN COUNTY KANSAS

PREPARED BY THE  
KANSAS DEPARTMENT OF TRANSPORTATION  
PLANNING AND DEVELOPMENT DEPARTMENT  
IN COOPERATION WITH THE  
U. S. DEPARTMENT OF TRANSPORTATION  
FEDERAL HIGHWAY ADMINISTRATION

SCALE  
0 1 2 3 4 MILES

1976  
POLYCONIC PROJECTION



KEY TO COUNTIES  
HORIZONTAL CONTROL BASED ON  
U.S. GEOD. SURV. SYSTEM  
VERTICAL CONTROL BASED ON  
U.S. GEOD. SURV. SYSTEM