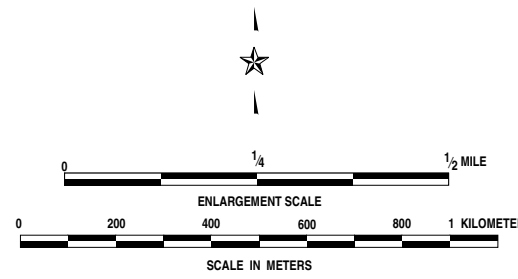
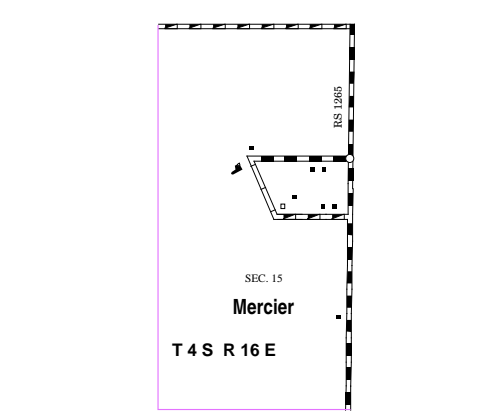
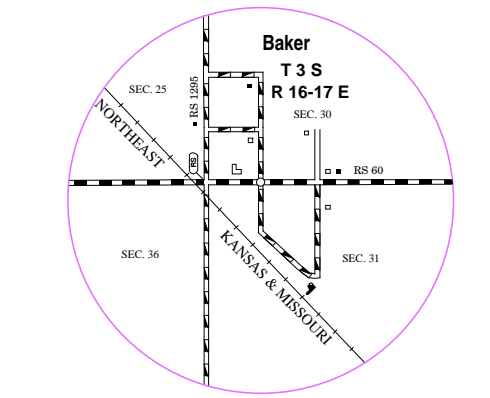
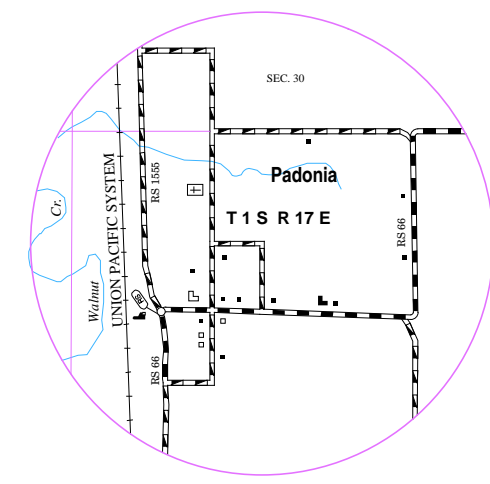
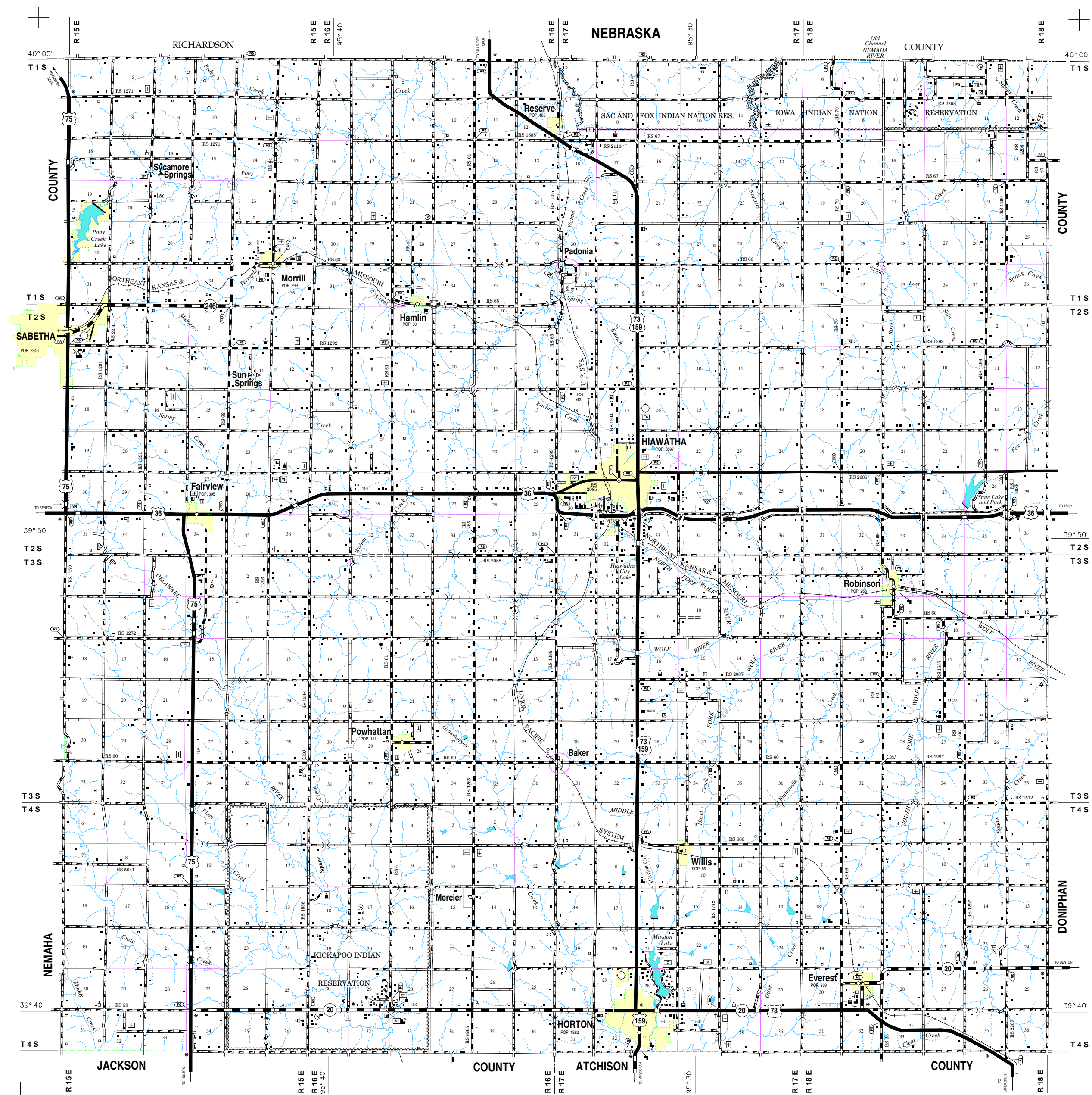


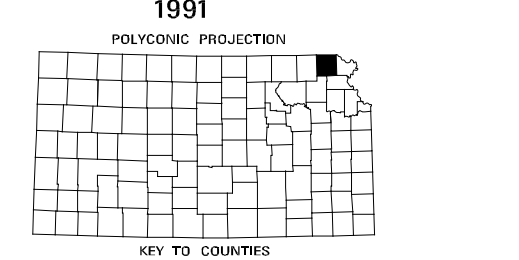
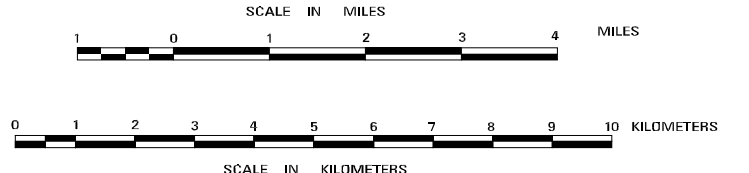
LEGEND

ROADS AND ROADWAY FEATURES	CONSERVATION AND RECREATION
Primary Road (Type A)	Public Ground
Unimproved Road (Type B)	Playground Ball Field, Etc.
Graded and Drained Road (Type C)	Bathing Beach or Swimming Pool
Subsurface Road (Type D)	Swamp
Gravel or Stone Road - Not Graded or Drained (Type E-1)	Camp (Shade Permanence (Tents or Trailer Parking)
Gravel or Stone Road - Graded and Drained (Type E-2)	Trunked Court or Motel (Figure Indication)
Gravel or Stone Road With Stabilized Surface (Type E-3)	Number of Permanent Cabins or Cottages
Blanketed Road - Low Type (Type F, G, I, H-1)	Camp or Lodge (Permanent Site with Building)
Blanketed Road - High Type (Type F, G, I, H-2, L, I, K, L)	Small Park (SP - State, CP - County)
Ditch	Fish Hatchery
Highway With Full Control of Access	NP - Municipal SH - Safety Rest Area
Side Roads and Streets in Unincorporated Urban Centers and Extensions of Local Roads Within Municipalities	Best Sanctuary
4 Lane Unimproved Highway	Game Preserve
Proposed Road	Rifle Club
Rural Secondary System	Soft Ground or Country Club
Points Between Which Distances are Measured	Riding Academy
	Yacht Club
	Amusement Park or Mall
	Fair Ground, Race Course, Speedway
	Drive-In Theatre
	Musica
	Road Grounds
	Public House or State House (Add Letters A, B, C, D, E or F or G or H or I or J or K or L or M or N or O or P or Q or R or S or T or U or V or W or X or Y or Z)
ROAD SYSTEM DESIGNATION	FARM UNITS, DWELLINGS, ETC.
Interstate Numbered Highway	Dwelling
U.S. Numbered Highway	Multi-Dwelling
State Highway System or State Numbered Highway	Combined Dwelling and Store
End of Designated System or Market Route	Dwelling and Post Office
Kansas Turnpike Authority	Dwelling and Filling Station
	Dwelling, Business and Filling Station
	Tire and Motor
	Hotel Inn
	Home Safety Quarters
	Church or Other Religious Institution
	Church and School (Add S)
	Cemetery
	Church With Cemetery Adjacent
	Fresh Air Farm or Rest Home
	Hospital
	Water Well
	State Post or Entry or Weight Station
	Group of Road Cabins (Add Letters, Space)
	(Figure above for instance number of dwellings included in the group; figure over individual units show number of each included regardless of order)
RAILROADS	INDUSTRIAL
Railroad (Any Number of Tracks Used by a Single Operating Company or by Tracks of Another Center Under Trackage Rights)	Store or Small Business Establishment
Railroads in Joint Operation (Two or More Tracks of Separately Operated Companies or Abandon Rights-of-Way)	Business and Filling Station
Railroad Station	Business (Filling Station, and Post Office)
	Factory or Industrial Plant
	Mine Shaft (Add Unit Only Mine)
	Oil or Gas Well
	Oil or Gas Field
	Storage Tank (Gas or Oil) Figure
	Denote Number of Tanks
	Filling Station (Not Connected with Other Business)
	Pumping Station (Oil or Gas)
	Gravel or Quarry Station (General)
	Valve House
	Seasonal Industry (Cannery or Small Book Mfg)
	Fruit or Nut Orchard
	Fruit or Produce Packing House
	Road Stand Farm Products Sales
	Warehouse - General (Government Add State or U.S.)
	Group of Grain Storage Silos
	Greenhouse
	Nursery
	Stock Feed Loading Pen or Canal
	Stock Pen at Railroad (Siding) (Small)
	Small Gravel Pit
	Rock Quarry
	Mill or Down (Lime, Clay Products, Coke, Etc.)
	Feed Lot
	Shopping Center
	Seasonal Business
	Sawmill (Sawtooth)
STRUCTURES	EDUCATIONAL AND CORRECTIONAL INSTITUTIONS
Highway Bridge, General	Schoolhouse
Truss Bridge (Greater Than 20 Feet)	Consolidated or Large School
Small Bridge (Chimney Spaced)	College, Faculty Community Hall
Double Bridge (Two Bridges for Long River Crossings)	Agricultural Experiment Station
General	Correctional Institution
Double Bridge (Two Bridges for Long River Crossings)	Museum - General
Highway Grade Separation	Public Library
BOUNDARIES	PUBLIC SERVICE FACILITIES
State	Post Office
County	Highway Garage
Corporate Lines	Fire Engine House
Boundary Lines Established For Detached Urban Places	Garbage or Rubbish Dump
Section Lines	Sanitary Disposal Plant
Boundary to Mark Enlargement East	Acres - Unknown Yard
Parks and Other Reservations National, State, County or Municipal, Park, Indian Reservation, National Monument, Federal Development Project	Transformer Station
Monument - Small Historic Site	Power Plant
	Power Substation
	Bus Stop
	Water Supply Stand Pipe or Tank
	Rail Station (With Call Letters)
	Rail Station (Without Call Letters)
	Water Treatment Plant
	Junkyard
	U.S. Corps of Engineers Office
	Fort, Army Camp, Barracks or Other Military Post
	Transit Station
NATURAL FEATURES	
Prominent Elevation - With Name (Numerals Indicate Elevation Above Sea Level)	



GENERAL HIGHWAY MAP BROWN COUNTY KANSAS

PREPARED BY THE
KANSAS DEPARTMENT OF TRANSPORTATION
BUREAU OF TRANSPORTATION PLANNING
IN COOPERATION WITH THE
U.S. DEPARTMENT OF TRANSPORTATION
FEDERAL HIGHWAY ADMINISTRATION



POPULATION - 1990 ALL CENSUS
ORDERED BY THE SECRETARY OF STATE
BY ORDER OF THE SECRETARY JULY 1, 1993

REVISIONS COMPLETED 8-18-91
FINAL REVISION 9-29-92

COMPUTER
GENERATED

SCANNED FROM NON-STABLE BASE