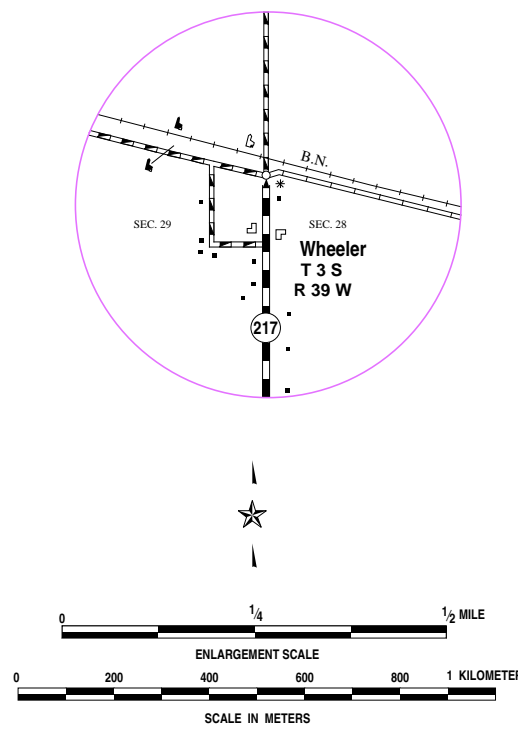


ROADS AND ROADWAY FEATURES		CONSERVATION AND RECREATION	
Private Road (Type A)	Public Recreation	Public Recreation	Public Recreation
Unimproved Road (Type B)	State, Tourist or Historical Site	State, Tourist or Historical Site	State, Tourist or Historical Site
Graded and Drained Road (Type C)	Trailer Park	Trailer Park	Trailer Park
Soil Surface Road (Type D)	Hotel or Motel	Hotel or Motel	Hotel or Motel
Gravel or Stone Road - Spaced	Camp or Lodge (Permanent Site with Building)	Camp or Lodge (Permanent Site with Building)	Camp or Lodge (Permanent Site with Building)
Barren Road (Type E) - Low Type (Type F, G, H, I)	Small Park (SP - State, CP - County)	Small Park (SP - State, CP - County)	Small Park (SP - State, CP - County)
Paved Road (Type G-2, H-2, I, J, K, L)	MP - Multi-Use Safety Rest Area	MP - Multi-Use Safety Rest Area	MP - Multi-Use Safety Rest Area
Diked Highway	Flora Hatchery	Flora Hatchery	Flora Hatchery
Highway With Full Control of Access	Game Farm	Game Farm	Game Farm
Side Roads and Streets in Unincorporated Places	Game Preserve or Bird Sanctuary	Game Preserve or Bird Sanctuary	Game Preserve or Bird Sanctuary
4 Lane Undivided Highway	Rifle Club Public	Rifle Club Public	Rifle Club Public
Road Secondary System	Shell Ground or Country Club	Shell Ground or Country Club	Shell Ground or Country Club
Points Between Which Distances are Measured	Hiking Academy, Guide, Club, Statues	Hiking Academy, Guide, Club, Statues	Hiking Academy, Guide, Club, Statues
Interstate Numbered Highway	Race Course, Speedway	Race Course, Speedway	Race Course, Speedway
U. S. Numbered Highway	Marina	Marina	Marina
State Highway System or State Numbered Highway	Rural Grounds	Rural Grounds	Rural Grounds
End of Designated System or Marked Route	Fair Grounds	Fair Grounds	Fair Grounds
Kansas Turnpike Authority	FARM UNITS, DWELLINGS, ETC.	FARM UNITS, DWELLINGS, ETC.	FARM UNITS, DWELLINGS, ETC.
Railroad	Dwelling	Dwelling	Dwelling
Railroad Crossing	Multi-Dwelling	Multi-Dwelling	Multi-Dwelling
Grade Crossing	Church or Other Religious Institution	Church or Other Religious Institution	Church or Other Religious Institution
Railroad Above	Cemetery	Cemetery	Cemetery
Railroad Below	Church With Cemetery Adjacent	Church With Cemetery Adjacent	Church With Cemetery Adjacent
AIRWAYS AND AIRPORTS	Rest Home	Rest Home	Rest Home
Military Field (Some Facilities Available)	Hospital	Hospital	Hospital
AG-4M Limited Facilities	State Port of Entry or Weight Station	State Port of Entry or Weight Station	State Port of Entry or Weight Station
Airway Light Beacon, General	Group or Mixed Cultural Features Closely Spaced	Group or Mixed Cultural Features Closely Spaced	Group or Mixed Cultural Features Closely Spaced
Airport, Complete Facilities (Commercial or Municipal)	(Figure Above Bar Indicates Number of Overlays Included in the Group; Figures over Individual Bars show number of each included regardless of order)	(Figure Above Bar Indicates Number of Overlays Included in the Group; Figures over Individual Bars show number of each included regardless of order)	(Figure Above Bar Indicates Number of Overlays Included in the Group; Figures over Individual Bars show number of each included regardless of order)
DRAINAGE	INDUSTRIAL	INDUSTRIAL	INDUSTRIAL
Major River	Store or Small Business Establishment	Store or Small Business Establishment	Store or Small Business Establishment
Rivers (Intermittent)	Factory	Factory	Factory
Major Drainage (Intermittent)	Mine	Mine	Mine
Minor Drainage	Oil or Gas Well(s)	Oil or Gas Well(s)	Oil or Gas Well(s)
Irrigation Ditch/Canal	Storage Tank(s) (Gas or Oil)	Storage Tank(s) (Gas or Oil)	Storage Tank(s) (Gas or Oil)
Lake Subject to Flood Overflow Land	Pumping or Gauging Station	Pumping or Gauging Station	Pumping or Gauging Station
Lake, Reservoir, or Pond (With Dam)	Orchard, Tree Farm, Nursery or Greenhouse	Orchard, Tree Farm, Nursery or Greenhouse	Orchard, Tree Farm, Nursery or Greenhouse
Marsh Land	Grain Elevator	Grain Elevator	Grain Elevator
STRUCTURES	Stock Yard - Loading Pen or Corral	Stock Yard - Loading Pen or Corral	Stock Yard - Loading Pen or Corral
Highway Bridge, General (Total Span Greater Than 20 Feet)	Quarry	Quarry	Quarry
Small Bridges Closely Spaced	Feed Lot	Feed Lot	Feed Lot
Bridges General	Shopping Center	Shopping Center	Shopping Center
Twin Bridges	Schoolhouse	Schoolhouse	Schoolhouse
Highway Grade Separation	Orange, Townhall or Community Hall	Orange, Townhall or Community Hall	Orange, Townhall or Community Hall
Levee or Dike	K-12 Agricultural Research Center	K-12 Agricultural Research Center	K-12 Agricultural Research Center
Natural or Concrete Ford	Correctional Institution	Correctional Institution	Correctional Institution
Gate Access Road (Any Type)	Museum - General	Museum - General	Museum - General
BOUNDARIES	Public Library	Public Library	Public Library
State	PUBLIC SERVICE FACILITIES	PUBLIC SERVICE FACILITIES	PUBLIC SERVICE FACILITIES
County	Post Office	Post Office	Post Office
City Limits	Road Maintenance Shop	Road Maintenance Shop	Road Maintenance Shop
Section Lines	Fire Engine House	Fire Engine House	Fire Engine House
Boundary to Mark Embargement Inset	Lock/Well	Lock/Well	Lock/Well
Parks and Other Reservations: National State, County or Municipal Park, Indian Reservation, National Monument, Federal Development Project	Storage Silo/Plant	Storage Silo/Plant	Storage Silo/Plant
Urban Boundary	Salvage Yard	Salvage Yard	Salvage Yard
CITIES OR NAMED PLACES	Power Plant	Power Plant	Power Plant
State Capital	Power Substation	Power Substation	Power Substation
County Seat	Water Tower	Water Tower	Water Tower
Unincorporated Place	Railroad Station (With Call Letters)	Railroad Station (With Call Letters)	Railroad Station (With Call Letters)
Local	Water Treatment Plant	Water Treatment Plant	Water Treatment Plant
Incorporated City	U.S. Corps of Engineers Dike	U.S. Corps of Engineers Dike	U.S. Corps of Engineers Dike
	NATURAL FEATURES	NATURAL FEATURES	NATURAL FEATURES
	Prominent Elevation - With Name	Prominent Elevation - With Name	Prominent Elevation - With Name
	(Numerals Indicate Elevation Above Sea Level)	(Numerals Indicate Elevation Above Sea Level)	(Numerals Indicate Elevation Above Sea Level)
	MISCELLANEOUS	MISCELLANEOUS	MISCELLANEOUS
	Fort, Army Camp, Barracks or Other Military Post	Fort, Army Camp, Barracks or Other Military Post	Fort, Army Camp, Barracks or Other Military Post



# GENERAL HIGHWAY MAP CHEYENNE COUNTY KANSAS

PREPARED BY THE  
**KANSAS DEPARTMENT OF TRANSPORTATION  
BUREAU OF TRANSPORTATION PLANNING**  
IN COOPERATION WITH THE  
**U. S. DEPARTMENT OF TRANSPORTATION  
FEDERAL HIGHWAY ADMINISTRATION**

