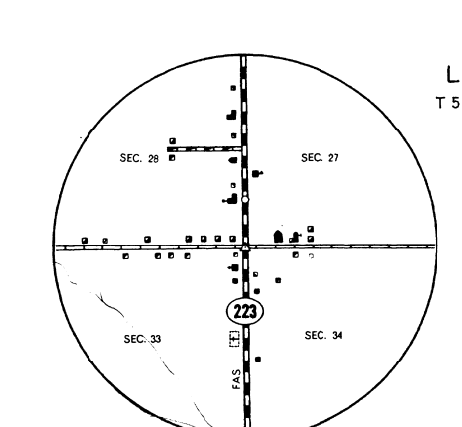
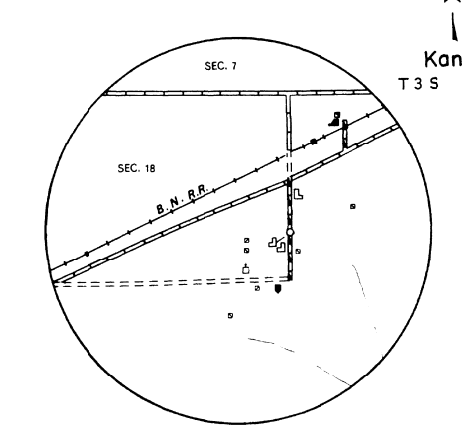
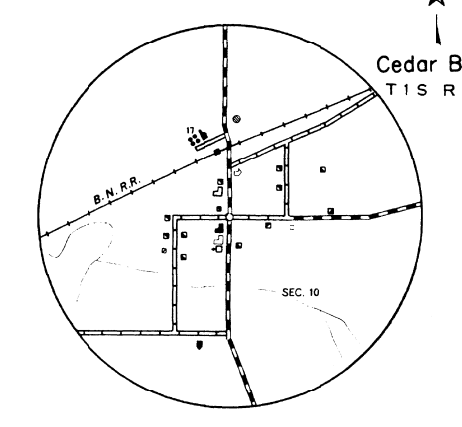
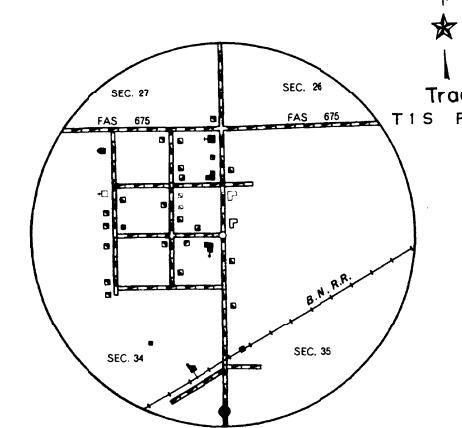


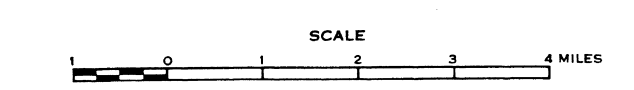
**LEGEND**

- |   |   |
|---|---|
| <p><b>ROADS AND ROADWAY FEATURES</b></p> <ul style="list-style-type: none"> <li>PRIMITIVE ROAD (TYPE A)</li> <li>UNIMPROVED ROAD (TYPE B)</li> <li>GRADED AND DRAINED ROAD (TYPE C)</li> <li>SOIL SURFACED ROAD (TYPE D)</li> <li>GRAVEL OR STONE ROAD - NOT GRADED OR DRAINED (TYPE E)</li> <li>GRAVEL OR STONE ROAD - GRADED AND DRAINED (TYPE F)</li> <li>GRAVEL OR STONE ROAD WITH STABILIZED SURFACE (TYPE G)</li> <li>BITUMINOUS ROAD - LOW TYPE (TYPE H)</li> <li>PAVED ROAD (TYPE I)</li> <li>DIVIDED HIGHWAY</li> <li>HIGHWAY WITH FULL CONTROL OF ACCESS</li> <li>SIDE ROADS AND STREETS IN UNINCORPORATED URBAN CAPTAINS AND EXTENSIONS OF LOCAL ROADS WITHIN MUNICIPALITIES</li> <li>4 LANE UNDIVIDED HIGHWAY</li> <li>PRIVATE ROAD</li> <li>PROJECTED ROAD</li> </ul> <p><b>ROAD SYSTEM DESIGNATION</b></p> <ul style="list-style-type: none"> <li>FEDERAL AID INTERSTATE HIGHWAY SYSTEM</li> <li>FEDERAL AID PRIMARY HIGHWAY SYSTEM</li> <li>FEDERAL AID SECONDARY HIGHWAY SYSTEM</li> <li>POINTS BETWEEN WHICH DISTANCES ARE MEASURED INDICATED THIS WAY</li> <li>INTERSTATE NUMBERED HIGHWAY</li> <li>U.S. NUMBERED HIGHWAY</li> <li>STATE HIGHWAY SYSTEM OR STATE NUMBERED HIGHWAY</li> <li>END OF DESIGNATED SYSTEM OR MARKED ROUTE</li> </ul> <p><b>RAILROADS</b></p> <ul style="list-style-type: none"> <li>RAILROAD (TYPE A)</li> <li>RAILROADS IN EXTANTION (TYPE B)</li> <li>NARROW GAUGE RAILROAD</li> <li>ELECTRIC INTERURBAN OR SUBURBAN RAILROAD</li> <li>ABANDONED RAILROAD (TYPE C)</li> <li>ABANDONED ELECTRIC LINE (TYPE D)</li> <li>RAILROAD STATION</li> </ul> <p><b>RAILROAD CROSSINGS</b></p> <ul style="list-style-type: none"> <li>GRADE CROSSING</li> <li>RAILROAD ABOVE</li> <li>RAILROAD BELOW</li> <li>RAILROAD BRIDGE</li> </ul> <p><b>AIRWAYS AND AIRPORTS</b></p> <ul style="list-style-type: none"> <li>AIR ROUTE</li> <li>MILITARY FIELD (TYPE A)</li> <li>AIRPORT, COMPLETE FACILITIES (TYPE B)</li> <li>AIRFIELD, LIMITED FACILITIES (TYPE C)</li> <li>LANDING AREA OR STRIP (TYPE D)</li> <li>AIRWAY LIGHT BEACON - GENERAL AIRPORT - GENERAL</li> </ul> <p><b>NAVIGATION</b></p> <ul style="list-style-type: none"> <li>NAVIGABLE STREAM (TYPE A)</li> <li>INTERMITTENT STREAM (TYPE B)</li> <li>NARROW STREAM</li> <li>WIDE STREAM</li> <li>DRAINAGE DITCH</li> <li>IRIGATION DITCH</li> <li>LAKE, RESERVOIR, OR POND</li> <li>LAKE, RESERVOIR, OR POND WITH DAM</li> <li>DRY LAKE SUBJECT TO FLOOD</li> <li>MARSH OR SWAMP LAND</li> <li>OVERFLOW LAND</li> </ul> <p><b>STRUCTURES</b></p> <ul style="list-style-type: none"> <li>HIGHWAY BRIDGE - GENERAL</li> <li>SMALL BRIDGES CLOSELY SPACED</li> <li>BRIDGES FOR LONG RIVER CROSSINGS</li> <li>GENERAL ARCH</li> <li>TRUSS OR GIRDER</li> <li>CANTILEVER BRIDGE</li> <li>COVERED BRIDGE</li> <li>HIGHWAY GRADE SEPARATION</li> <li>MISCELLANEOUS STRUCTURES</li> <li>DAM WITH ROAD</li> <li>LEVEE OR DIKE</li> <li>LEVEE OR DIKE WITH ROAD</li> <li>CONCRETE FORD OR DIP</li> <li>FORD - ROAD ESTABLISHED</li> <li>CATTLE GUARD</li> <li>GATE ACROSS ROAD (TYPE A)</li> </ul> <p><b>BOUNDARIES</b></p> <ul style="list-style-type: none"> <li>STATE</li> <li>COUNTY</li> <li>CORPORATE LINES</li> <li>BOUNDARY LINES ESTABLISHED FOR DELIMITED URBAN PLACES</li> <li>SECTION LINE</li> <li>MATCH LINE BETWEEN ADJOINING SHEETS OF SAME COUNTY</li> <li>BOUNDARY TO MARK ENLARGEMENT INSET</li> <li>PARKS AND OTHER RESERVATIONS NATIONAL</li> <li>STATE, COUNTY, OR MUNICIPAL PARK</li> <li>INDIAN RESERVATION, NATIONAL MONUMENT, FEDERAL DEVELOPMENT PROJECT</li> <li>MONUMENT - SMALL HISTORIC SITE</li> </ul> <p><b>CITY AND VILLAGE CENTERS</b></p> <ul style="list-style-type: none"> <li>STATE CAPITAL</li> <li>COUNTY SEAT</li> <li>OTHER CITIES AND VILLAGES</li> <li>INCORPORATED CITY OR VILLAGE</li> <li>BOUNDARY LIMITS FIXED FOR SPECIAL TAXING AREAS AND OTHER UNINCORPORATED URBAN PLACES DELIMITED</li> </ul> | <p><b>CONSERVATION AND RECREATION</b></p> <ul style="list-style-type: none"> <li>PICNIC GROUND</li> <li>PLAYGROUND, BALL FIELD, ETC.</li> <li>BATHING BEACH OR SWIMMING POOL</li> <li>SCENIC SITE</li> <li>CAMP SITE, NO PERMANENCE (TYPE A)</li> <li>CAMP SITE, NO PERMANENCE (TYPE B)</li> <li>TOURIST COURT OR MOTEL</li> <li>CAMP OR LODGE (TYPE A)</li> <li>SMALL FARM (TYPE B)</li> <li>FISH HATCHERY</li> <li>BIRD SANCTUARY</li> <li>GAME FARM</li> <li>GAME PRESERVE</li> <li>RIFLE CLUB</li> <li>GOLF COURSE OR COUNTRY CLUB</li> <li>POLO GROUNDS</li> <li>RIDING ACADEMY</li> <li>YACHT CLUB</li> <li>AMUSEMENT PARK OR MALL</li> <li>FAIR GROUND, RACE COURSE, SPEEDWAY</li> <li>DRIVE-IN THEATRE</li> </ul> <p><b>FARM UNITS, DWELLINGS, ETC.</b></p> <ul style="list-style-type: none"> <li>FARM UNIT</li> <li>DWELLING (TYPE A)</li> <li>DWELLING (TYPE B)</li> <li>SPACED (TYPE A)</li> <li>COMBINED DWELLING AND STORE</li> <li>DWELLING AND FILING STATION</li> <li>DWELLING, BUSINESS, AND FILING STATION</li> <li>TENANT HOUSE</li> <li>SEASONAL OR SUMMER COLONY DWELLING</li> <li>HOTEL, INN</li> <li>CHURCH OR OTHER RELIGIOUS INSTITUTION</li> <li>CHURCH AND SCHOOL</li> <li>CEMETERY</li> <li>CHURCH WITH CEMETERY ADJACENT</li> <li>FRESH AIR FARM OR REST HOME</li> <li>HOSPITAL</li> <li>WELL</li> <li>STATE POINT OF ENTRY OR HIGHWAY STATION</li> <li>GROUP OF MIXED CULTURAL FEATURES CLOSELY SPACED</li> </ul> <p><b>INDUSTRIAL</b></p> <ul style="list-style-type: none"> <li>STORE OR SMALL BUSINESS ESTABLISHMENT</li> <li>BUSINESS AND FILING OFFICE</li> <li>BUSINESS, FILING STATION, AND POST OFFICE</li> <li>FACTORY OR INDUSTRIAL PLANT</li> <li>MINE-SHAFT OR DRIFT (TYPE A)</li> <li>OIL OR GAS WELL</li> <li>OIL OR GAS FIELD</li> <li>OIL TANK</li> <li>GAS TANK</li> <li>GROUP OF STORAGE TANKS (TYPE A)</li> <li>FILLING STATION (TYPE A)</li> <li>PUMPING STATION (TYPE A)</li> <li>GAGING OR PUMPING STATION (GENERAL)</li> <li>VALVE HOUSE</li> <li>SEASONAL INDUSTRY (GENERAL)</li> <li>MILK DEPOT, CREAMERY, OR CHEESE FACTORY</li> <li>FRUIT OR NUT ORCHARD</li> <li>FRUIT OR PRODUCE PACKING HOUSE</li> <li>ROAD STAND FARM PRODUCTS SALES</li> <li>WAREHOUSE - GENERAL (TYPE A)</li> <li>GRAIN ELEVATOR</li> <li>GROUP OF GRAIN STORAGE BINS</li> <li>GREENHOUSE</li> <li>NURSERY</li> <li>STOCK YARD - LOADING PEN OR CORRAL</li> <li>STOCK PEN AT RAILROAD SIDING</li> <li>GRAVEL PIT</li> <li>QUARRY</li> <li>KILN OR OVER-LIME CLAY PRODUCTS (TYPE A)</li> </ul> <p><b>EDUCATIONAL AND CORRECTIONAL INSTITUTIONS</b></p> <ul style="list-style-type: none"> <li>SCHOOLHOUSE</li> <li>CONSOLIDATED OR LARGE SCHOOL</li> <li>TOWNHALL, GYMNASIUM, OR COMMUNITY HALL</li> <li>AGRICULTURAL EXPERIMENT STATION</li> <li>COUNTY FARM</li> <li>CORRECTIONAL INSTITUTION</li> </ul> <p><b>PUBLIC SERVICE FACILITIES</b></p> <ul style="list-style-type: none"> <li>POST OFFICE</li> <li>HIGHWAY GARAGE</li> <li>FIRE ENGINE HOUSE</li> <li>GARBAGE OR RUBBISH DUMP</li> <li>SEWAGE DISPOSAL PLANT</li> <li>AUTO SALVAGE YARD</li> <li>TRANSFORMER STATION</li> <li>POWER PLANT</li> <li>BOOSTER STATION</li> <li>WATER SUPPLY, STAND PIPE, OR TANK</li> <li>RADIO STATION (TYPE A)</li> <li>RADIO RANGE STATION</li> </ul> <p><b>MISCELLANEOUS</b></p> <ul style="list-style-type: none"> <li>FORT, ARMY CAMP, BARRACKS, OR OTHER MILITARY POST</li> <li>TRIANGULATION STATION</li> <li>BENCH MARK (WITH ELEVATION)</li> </ul> <p><b>NATURAL FEATURES</b></p> <ul style="list-style-type: none"> <li>PROMINENT ELEVATION WITH NAME</li> <li>SINK OR DEPRESSION</li> </ul> |
|---|---|

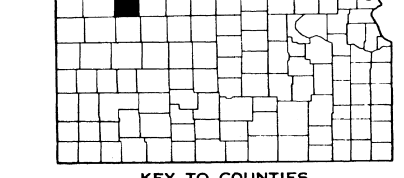


**GENERAL HIGHWAY MAP  
DECATUR COUNTY  
KANSAS**

PREPARED BY THE  
STATE HIGHWAY COMMISSION OF KANSAS  
DEPARTMENT OF PLANNING AND DEVELOPMENT  
IN COOPERATION WITH THE  
U. S. DEPARTMENT OF TRANSPORTATION  
FEDERAL HIGHWAY ADMINISTRATION



1972  
POLYCONIC PROJECTION



REINVENTORY COMPLETED 11-1-72  
HORIZONTAL CONTROL BASED ON U.S. COAST AND GEODETIC SURVEY  
SYSTEMS REVISED TO 11-1-72