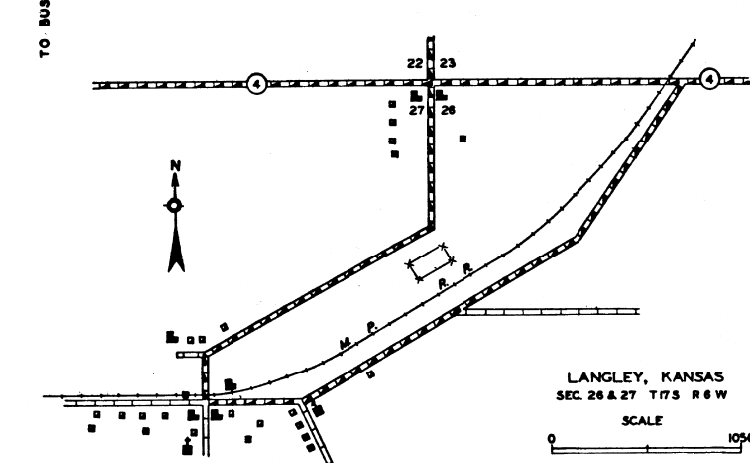
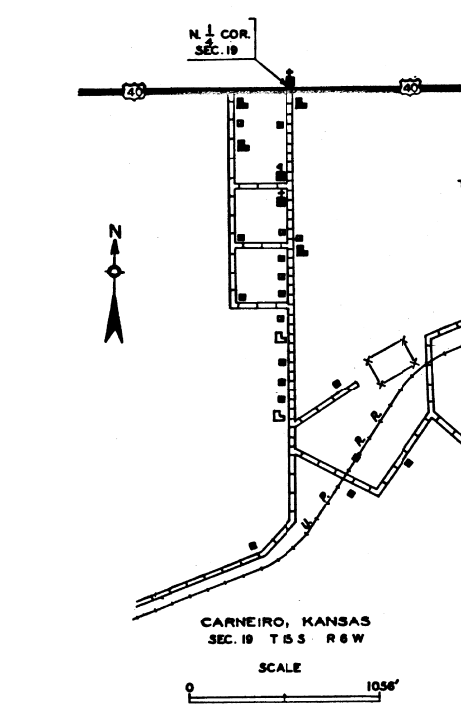
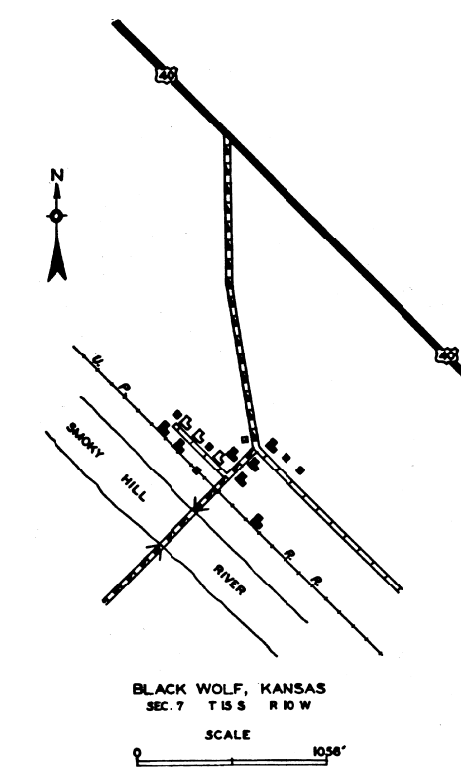


- LEGEND**
- | | |
|--|---|
| ROADS AND ROADWAY FEATURES | BOUNDARIES |
| UNIMPROVED EARTH | STATE LINE |
| IMPROVED EARTH | COUNTY LINE |
| METAL SURFACED (GRAVEL & STONE, CHATS, ETC.) | CORPORATE LINE |
| BITUMINOUS SURFACED (B.S.T., BIT. MAC) | SECTION LINE |
| PAVED SURFACE (CONCRETE, BRICK, BIT. MAC) | BOUNDARY TO MARK ENLARGEMENT INSET |
| FEDERAL AD. HIGHWAY SYSTEM | CITY & VILLAGE CENTERS |
| F.A.S. FEDERAL AD. SECONDARY HIGHWAY SYSTEM | STATE CAPITAL |
| STATE AID ROAD | COUNTY SEAT |
| CLOVER LEAF | OTHER CITIES AND VILLAGES |
| UNITED STATES HIGHWAY SYSTEM | OTHER CULTURAL FEATURES |
| STATE HIGHWAY SYSTEM | VACANT IN USE |
| RAILROADS (ANY NUMBER OF TRACKS) | FARM UNIT |
| RAILROAD (ANY NUMBER OF TRACKS) USED BY SINGLE OPERATING COMPANY | DWELLING (OTHER THAN FARM) |
| RAILROAD (ANY NUMBER OF TRACKS) USED BY MORE THAN ONE OPERATING COMPANY OR SAME OR ADJACENT RIGHTS OF WAY (DOT TRACAGE RIGHTS) | ROW OR GROUP OF DWELLINGS (FIGURE DENOTES NUMBER OF DWELLINGS) |
| ELECTRIC INTERURBAN OR SUBURBAN RAILROAD | COMBINED DWELLING AND STORE OR SMALL BUSINESS |
| RAILROAD STATION | TENANT HOUSE |
| GRADE CROSSING | SEASONAL DWELLINGS CLOSELY SPACED (FIGURE DENOTES NUMBER OF DWELLINGS) |
| RAILROAD ABOVE | CHURCH (OTHER RELIGIOUS INSTITUTIONS) |
| RAILROAD BELOW | COUNTY FARM |
| AIRWAYS | HOSPITAL |
| AIR ROUTE | CEMETERY |
| ARMY, NAVY OR MARINE CORPS FIELD | WELL |
| CIVIL AERONAUTICS AUTHORITY | WINDMILL |
| INTERMEDIATE FIELD | CHURCH WITH CEMETERY ADJACENT |
| COMMERCIAL OR MARSHAL FIELD | GROUP OF MIXED CULTURAL FEATURES (FIGURE DENOTES NUMBER OF FEATURES) |
| MARKED AERIAL FIELD | STORE OR SMALL BUSINESS ESTABLISHMENT (FIGURE DENOTES NUMBER OF ESTABLISHMENTS) |
| AIRPLANE LANDING FIELD-MARKED OR EMERGENCY | FACTORY OR INDUSTRIAL PLANT |
| AIRWAY BEACON LIGHT | MINE, SHAFT OR DRIFT (ANY KIND) |
| AIRPORT HOUSING FACILITIES | CL OR GAS WELL |
| NAVIGATION | CL OR GAS FIELD |
| NAVIGABLE STREAM (INTERMITTENT NAVIGATED) | CL TANK |
| DRAINAGE | GAS TANK |
| INTERMITTENT STREAM (NARROW) | GROUP OF GAS OR OIL TANKS |
| INTERMITTENT STREAM (WIDE) | PUMPING STATION OIL OR GAS |
| NARROW STREAM | CAUSING OR PUMPING STATION (GENERAL) |
| WIDE STREAM | WHE OPENING (SHAFT OR DRIFT) |
| MARSH OR SWAMP LAND | SEASONAL INDUSTRY (CANNERY OR SMALL GRAIN MILL) |
| DRAINAGE DITCH (MARD) (ARROWS POINT IN DIRECTION OF FLOW) | SEED DUMP |
| IRRIGATION DITCH (ARROWS POINT IN DIRECTION OF FLOW) | STOCK YARDS-LOADING PEN |
| RESERVOIR, POND OR LAKE | GRAVEL PIT |
| DAM | QUARRY |
| STRUCTURES | POST OFFICE |
| HIGHWAY BRIDGE (ANY TYPE) | TOURIST CAMP |
| LEVEE OR DIKE (WITH ROAD) | NURSERY |
| MINOR STRUCTURES - CONCRETE, FORD OR DIP | SCHOOL HOUSE |
| FORD - ROAD ESTABLISHED | CONSOLIDATED OR LARGE SCHOOL |
| PARKS & OTHER RESERVATIONS | OTHER EDUCATIONAL INSTITUTIONS |
| C.C.C. CAMP | TOWNSHIP, GRANGE OR COMMUNITY HALL (LETTERS DESIGNATE KIND) |
| BIRD SANCTUARY | CORRECTIONAL INSTITUTION |
| GAME FARM | WATER SUPPLY STAND PIPE |
| GAME PRESERVE | TRANSMISSION LINE |
| MONUMENT - SMALL | POWER PLANT |
| INDIAN BURIAL GROUND | POWER SUBSTATION |
| GOLF OR COUNTRY CLUB | TRANSFORMER STATION |
| ATHLETIC FIELD OR AMUSEMENT PARK | RADIO STATION |
| SMALL BARS (O.P. STATE, CO. COUNTY OR MUNICIPAL) | RADIO STATION (WITH CALL LETTERS) |
| PARKGROUND, RACE COURSE, SPEEDWAY | K.N.C. SHOPS |
| CAMP OR LODGE | PORT OF ENTRY |
| END OF R. NUMBERED ROUTE | CARBAGE OR RUBBISH DUMP |
| END OF F.A. ROUTE | SEWAGE DISPOSAL PLANT |
| END OF F.A. ROUTE | FORT, ARMY CAMP, BARRACKS OR MILITARY POST |
| END OF U.S. NUMBERED ROUTE | POINTS BETWEEN WHICH DISTANCES ARE MEASURED INDICATED THIS |
| | TRIANGULATION STATION |
| | END OF FA ROUTE |
| | END OF FAS ROUTE |
| | END OF SA ROUTE (NON FA OR FAS) |



HIGHWAY & TRANSPORTATION MAP ELLSWORTH COUNTY KANSAS

PREPARED BY THE
KANSAS STATE HIGHWAY DEPARTMENT
IN COOPERATION WITH THE
FEDERAL WORKS AGENCY
PUBLIC ROADS ADMINISTRATION
DATA OBTAINED FROM
STATE-WIDE HIGHWAY PLANNING SURVEY

