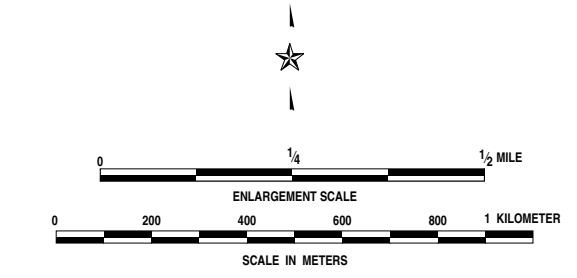
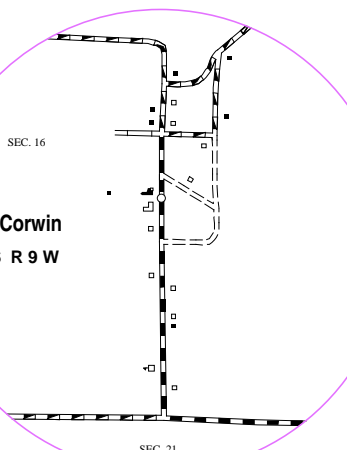
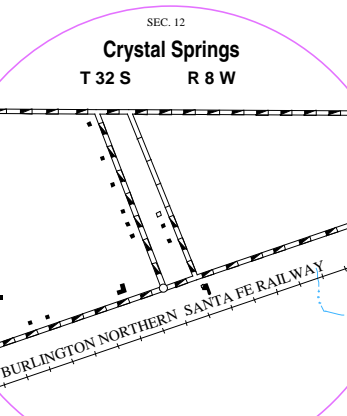
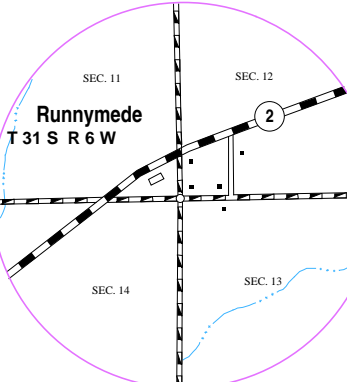
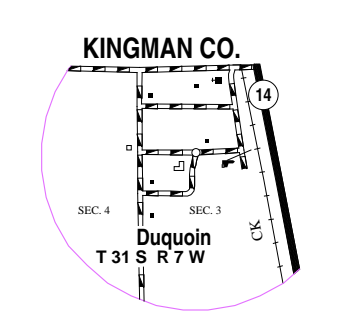
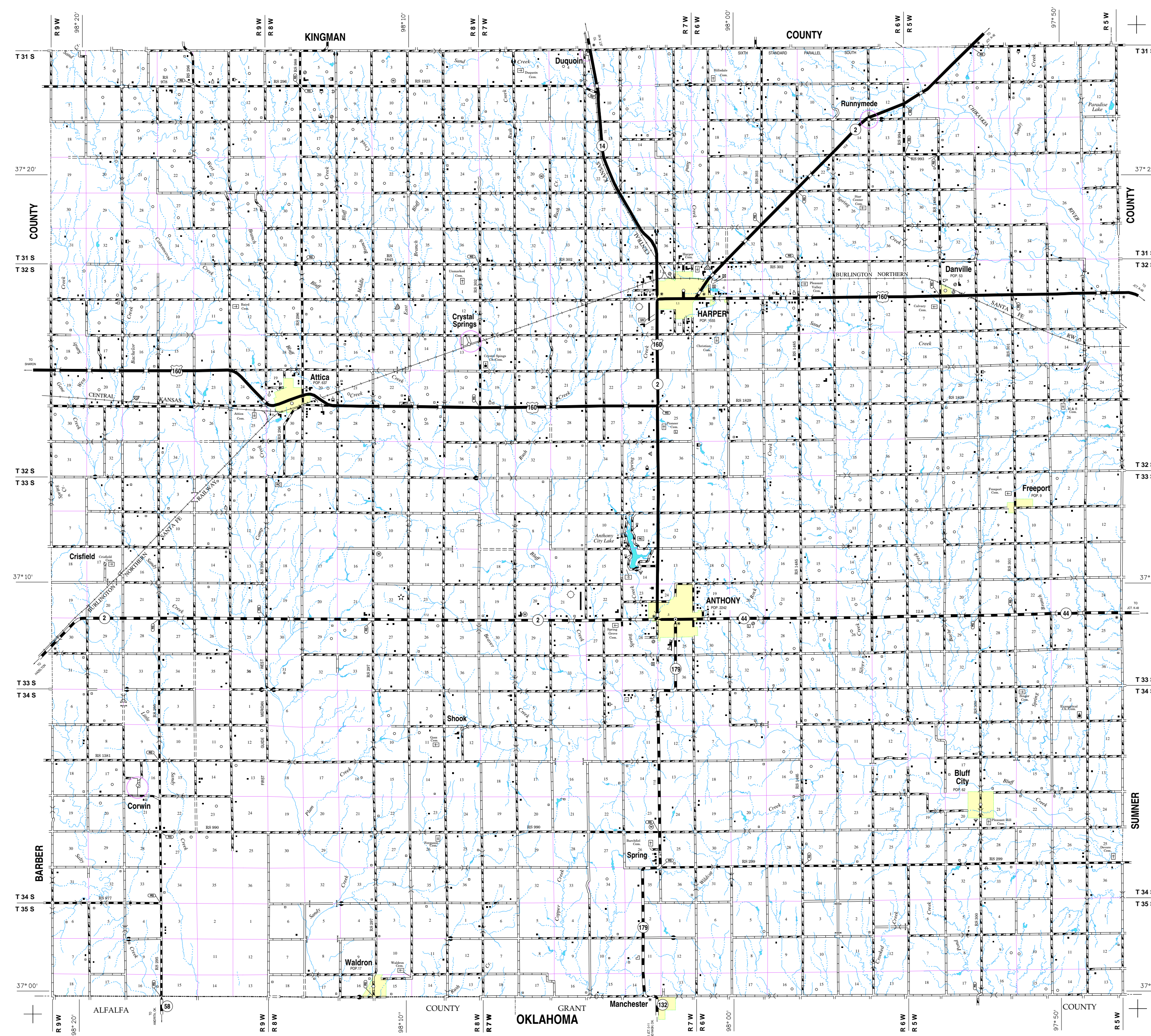


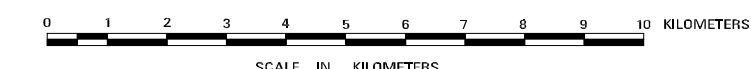
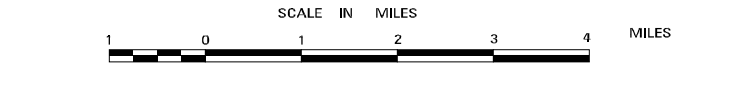
LEGEND

ROADS AND ROADWAY FEATURES		CONSERVATION AND RECREATION	
Primitive Road (Type A)	-----	Public Recreation	▲
Unimproved Road (Type B)	-----	State, Tourist or Historical Site	▲
Graded and Drained Road (Type C)	-----	Taxider Park	▲
Soil Surfaced Road (Type D)	-----	Hotel or Motel	▲
Revised Stone Road	-----	Camp or Lodge (Permanent Site with Building)	▲
Blowdown Road - Low Type (Type F, G-1, H-1)	-----	Small Park (SP - State, CP - County)	▲
Paved Road (Type G-2, H-2, I, J, K, L)	-----	SP - Multiple SR - Safety Rest Area	▲
Divided Highway	-----	Fish Hatchery	▲
Highway with Full Control of Access	-----	Game Farm	▲
Side Roads and Streets in Unincorporated Places	-----	Game Preserve or Bird Sanctuary	▲
4 Lane Undivided Highway	-----	Bike Club Public	▲
Projected Road	-----	Golf Ground or Country Club	▲
		Riding Academy, Saddle Club, Stables	▲
		Race Course, Speedway	▲
		Marble	▲
		Rodeo Grounds	▲
		Fair Grounds	▲
		FARM UNITS, DWELLINGS, ETC.	
		Dwelling	▲
		Multi-Dwelling	▲
		Church or Other Religious Institution	▲
		Cemetery	▲
		Church with Cemetery Adjacent	▲
		Rest Home	▲
		Hospital	▲
		State Port of Entry or Weight Station	▲
		Group or Mixed Cultural Features Closely Spaced	▲
		(Figure above bar indicates number of dwellings included in the group, figures over individual units show number of each indicated regardless of order)	▲
		INDUSTRIAL	
		Store or Small Business Establishment	▲
		Factory	▲
		Mine	▲
		Oil or Gas Well(s)	▲
		Storage Tank(s) (Gas or Oil)	▲
		Pumping or Gauging Station	▲
		Orchard, Tree Farm, Nursery or Greenhouse	▲
		Grain Elevator	▲
		Stock Yard-Loading Pen or Corral	▲
		Quarry	▲
		Feed Lot	▲
		Shopping Center	▲
		EDUCATIONAL AND CORRECTIONAL INSTITUTION	
		Schoolhouse	▲
		Group, Townhall or Community Hall	▲
		K.S.U. Agricultural Research Center	▲
		Correctional Institution	▲
		Museum - General	▲
		Public Library	▲
		PUBLIC SERVICE FACILITIES	
		Post Office	▲
		Road Maintenance Shop	▲
		Fire Engine House	▲
		Lumber	▲
		Sewage Disposal Plant	▲
		Sewage Land	▲
		Power Plant	▲
		Power Substation	▲
		Water Tower	▲
		Rail Station (With Call Letters)	▲
		Water Treatment Plant	▲
		U.S. Corps of Engineers Office	▲
		NATURAL FEATURES	
		Proposed Elevation - With Name	▲
		(Numerals Indicate Elevation Above Sea Level)	▲
		MISCELLANEOUS	
		Fort, Army Camp, Barracks or Other Military Post	▲

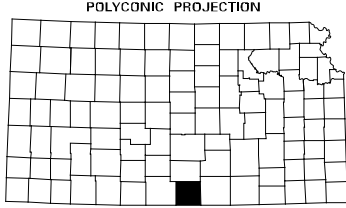


# GENERAL HIGHWAY MAP HARPER COUNTY KANSAS

PREPARED BY THE  
KANSAS DEPARTMENT OF TRANSPORTATION  
BUREAU OF TRANSPORTATION PLANNING  
IN COOPERATION WITH THE  
U.S. DEPARTMENT OF TRANSPORTATION  
FEDERAL HIGHWAY ADMINISTRATION



1999



POPULATION - 1990 U.S. CENSUS  
CONTINUED TO BE SECRETARY OF STATE  
BY ORDER OF THE BOARD JULY 1, 1999  
REVISIONS COMPLETED 4-9-99  
BY STATE HIGHWAY DEPARTMENT

COMPUTER  
GENERATED  
SCANNED FROM NON-STABLE BASE