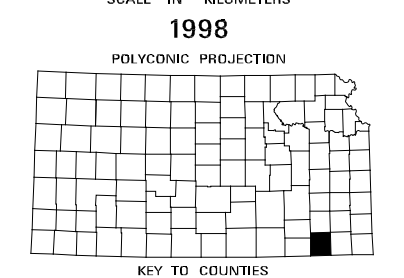
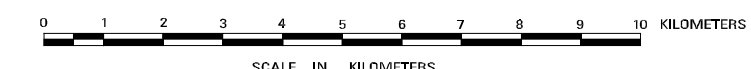
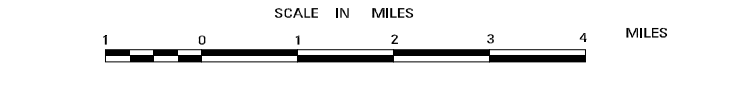


ROADS AND ROADWAY FEATURES	
Primitive Road (Type A)	--- -- -- --
Unimproved Road (Type B)	--- -- --
Graded and Drained Road (Type C)	--- --
Soil Surfaced Road (Type D)	---
Gravel or Stone Road	---
Blowdown Road - Low Type (Type F, G, I, H, J)	---
Paved Road (Type G, H, J, K, L)	---
Divided Highway	---
Highway With Full Control of Access	---
Side Roads and Streets in Unincorporated Places	---
4 Lane Undivided Highway	---
Projected Road	---
ROAD SYSTEM DESIGNATION	
Rural Secondary System	---
County Road System	---
Points Between Which Distances are Measured	---
Interstate Numbered Highway	---
U.S. Numbered Highway	---
State Highway System or State Numbered Highway	---
End of Designated System or Marked Route	---
Kansas Turnpike Authority	---
RAILROADS	
Railroad - Operating Company	---
Railroad Crossing	---
Grade Crossing	---
Railroad Above	---
Railroad Below	---
AIRWAYS AND AIRPORTS	
Military Field (Some Facilities Available)	---
Airfield - Limited Facilities	---
Airway Light Beacon, General	---
Airport, Complete Facilities (Commercial or Municipal)	---
DRAINAGE	
Major River	---
River - Intermittent	---
Major Drainage - Intermittent	---
Minor Drainage	---
Irrigation Ditch / Canal	---
Lake Subject to Flood, Overflow Land	---
Lake, Reservoir, or Pond (With Dam)	---
Marsh Land	---
STRUCTURES	
Highway Bridge, General (Total Span Greater Than 20 Feet)	---
Small Bridges Classy Spaced	---
Bridges General	---
Twin Bridges	---
Highway Grade Separation	---
Levee or Dike	---
Natural or Concrete Ford	---
Gate Across Road (Any Type)	---
BOUNDARIES	
State	---
County	---
City Limits	---
Section Lines	---
Boundary to Milk Encroachment Inset	---
Parks and Other Reservations, National, State, County or Municipal, Indian Reservation, National Monument, Federal Development Project	---
Urban Boundary	---
CITIES OR NAMED PLACES	
State Capital	---
County Seat	---
Unincorporated Places	---
Locality	---
Incorporated City	---
CONSERVATION AND RECREATION	
Public Recreation	---
State, Tractor or Historical Site	---
Trail or Park	---
Hotel or Motel	---
Camp or Lodge (Permanent Site with Building)	---
Small Park (SP - State, CP - County, MHP - Municipal, SH - Safety Rest Area)	---
Fish Hatchery	---
Game Farm	---
Game Preserve or Bird Sanctuary	---
Rifle Club Public	---
Golf Ground or Country Club	---
Riding Academy, Saddle Club, Stables	---
Fish Course, Speedway	---
Marina	---
Rodeo Course	---
Fair Grounds	---
FARM UNITS, DWELLINGS, ETC.	
Dwelling	---
Multi Dwelling	---
Church or Other Religious Institution	---
Cemetery	---
Church With Cemetery Adjacent	---
Rest Home	---
Hospital	---
State Port of Entry or Weight Station	---
Group or Mixed Cultural Features Closely Spaced (Figures above see indicates number of buildings included in the group. Figures over individual units show number of each included regardless of order)	---
INDUSTRIAL	
Store or Small Business Establishment	---
Factory	---
Mine	---
Oil or Gas Well(s)	---
Storage Tank(s) (Gas or Oil)	---
Pumping or Gauging Station	---
Orchard, Tree Farm, Nursery or Greenhouse	---
Grain Elevator	---
Stock Yard - Loading Pen or Corral	---
Quarry	---
Feed Lot	---
Shopping Center	---
EDUCATIONAL AND CORRECTIONAL INSTITUTION	
Schoolhouse	---
Grange, Townhall or Community Hall	---
K.S.U. Agricultural Research Center	---
Correctional Institution	---
Museum - General	---
Public Library	---
PUBLIC SERVICE FACILITIES	
Post Office	---
Road Maintenance Shop	---
Fire Engine House	---
Landfill	---
Sewage Disposal Plant	---
Salvage Yard	---
Power Plant	---
Water Tower	---
Radio Station (With Call Letters)	---
Water Treatment Plant	---
U.S. Corps of Engineers Office	---
NATURAL FEATURES	
Prominent Elevation - With Name (Numerals Indicate Elevation Above Sea Level)	---
MISCELLANEOUS	
Fur, Army Camp, Barracks or Other Military Post	---

# GENERAL HIGHWAY MAP MONTGOMERY COUNTY KANSAS

PREPARED BY THE  
KANSAS DEPARTMENT OF TRANSPORTATION  
BUREAU OF TRANSPORTATION PLANNING  
IN COOPERATION WITH THE  
U.S. DEPARTMENT OF TRANSPORTATION  
FEDERAL HIGHWAY ADMINISTRATION



POPULATION - 1990 U.S. CENSUS  
COMPARED TO THE SECRETARY OF STATE  
BY ORDER OF THE BOARD JULY 1, 1998  
REVISIONS COMPLETED 12-18-98  
REVISIONS RECORDED 3-23-99

COMPUTER  
GENERATED  
SCANNED FROM NON-STABLE BASE