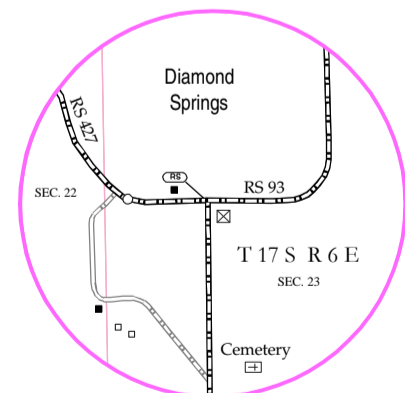
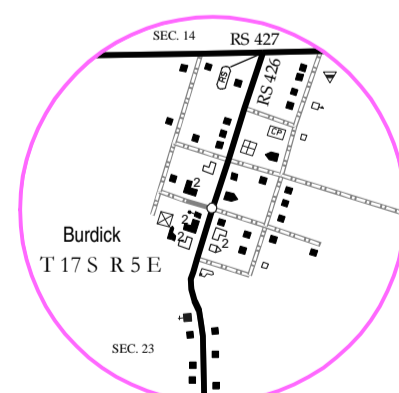
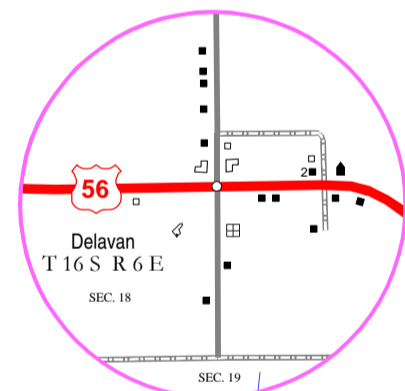
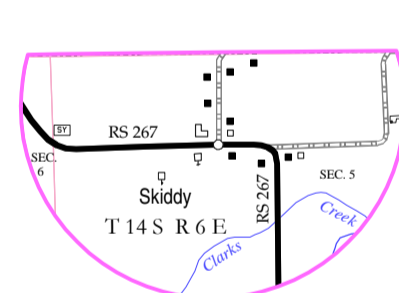
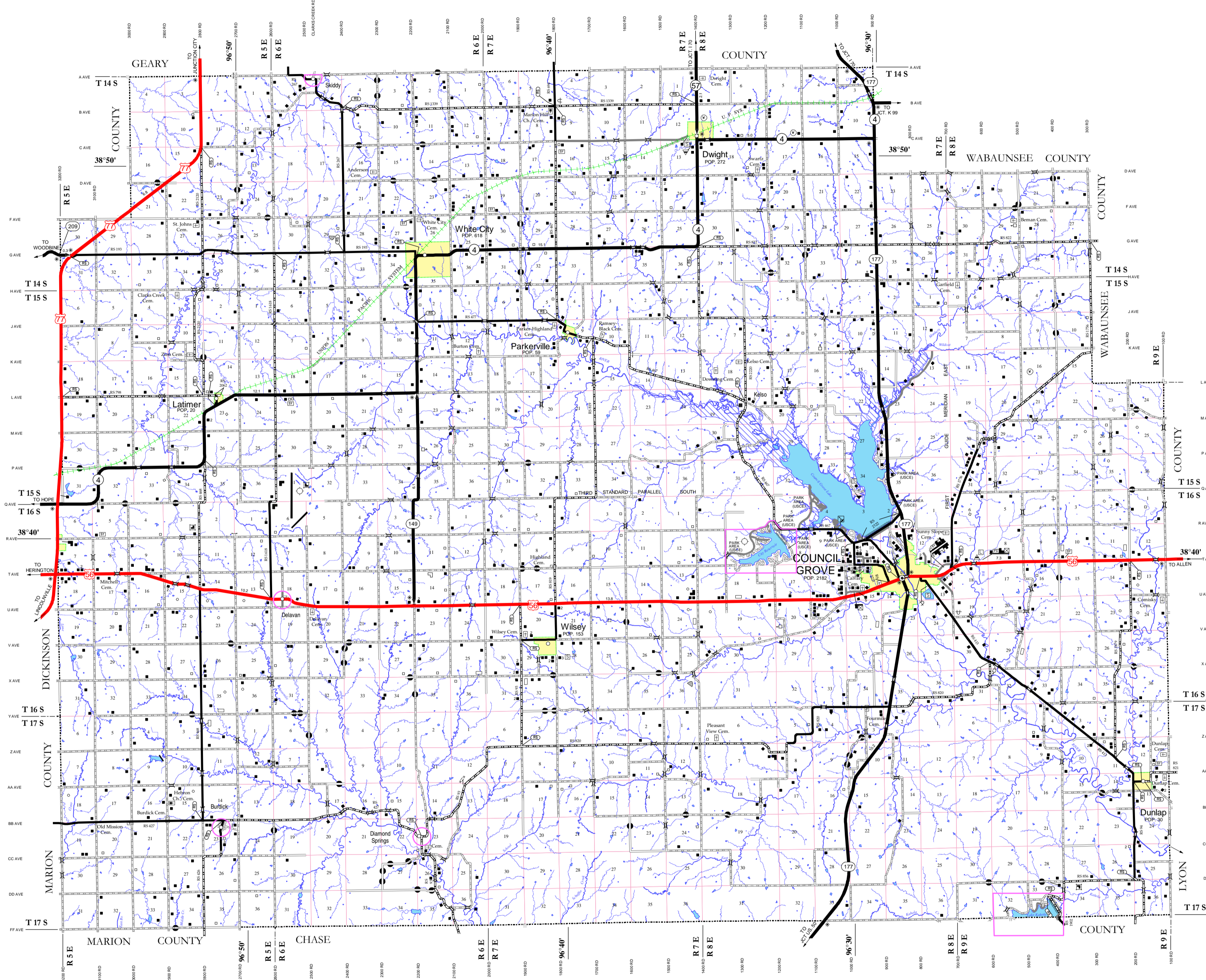


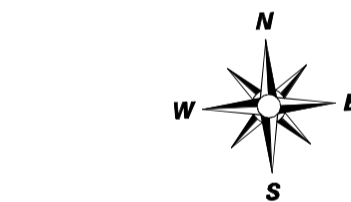
ENLARGED 5 NOT 8
0.00 0.25 0.50
Miles



0.00 0.25 0.50
Miles



ROADS AND ROADWAY FEATURES	
Controlled Access (With Interchange) - Interstate	—
Kansas Turnpike (KTA) (With Interchange)	—
US Route - Controlled Access (With Interchange)	—
US Route - Divided	—
US Route - Undivided	—
State Route - Controlled Access (With Interchange)	—
State Route - Divided	—
State Route - Undivided	—
RS Route - Paved	—
RS Route - Unpaved	—
Minor Road - Paved	—
Minor Road - Stone or Gravel	—
Minor Road - Dirt	—
Side Road or Street in Unincorporated Area	—
County Road System	—
Rural Secondary System	—
Points Between Which Distances are Measured	—
Interstate Numbered Highway	—
U.S. Numbered Highway	—
State Highway System or State Numbered Highway	—
End of Designated System or Marked Route	—
Kansas Turnpike Authority	—
RAILROADS	—
Railroad (Operating Company)	—
Grade Crossing	—
Railroad Above	—
Railroad Below	—
AIRWAYS AND AIRPORTS	—
Military Field (Some Facilities Available)	—
Airfield (Limited Facilities)	—
Airway Light Beacon (General)	—
Airport (Complete Facilities) (Commercial or Municipal)	—
DRAINAGE	—
Major River	—
River	—
Major Drainage	—
Minor Drainage	—
Irrigation Ditch or Canal	—
Lake Subject to Flood Overflow Land	—
Lake, Reservoir, or Pond (With Dam)	—
BRIDGES	—
Bridges (Total Span Greater Than 20 Feet)	—
Open to Traffic	—
Closed to Traffic	—
Highway Grade Separation	—
MISCELLANEOUS	—
Roundabout	—
Bike and Walking Trail	—
Levee or Dike	—
Natural or Concrete Ford	—
Gate Across Key Road (Key Type)	—
BOUNDARIES	—
State	—
County	—
City Limits	—
Section Lines	—
Boundary to Mark Enlargement Inset	—
Parks and Other Reservations National, State, County or Municipal Park, Indian Reservation, National Monument, Federal Development Project	—
Urban Boundary	—



GENERAL HIGHWAY MAP MORRIS COUNTY KANSAS

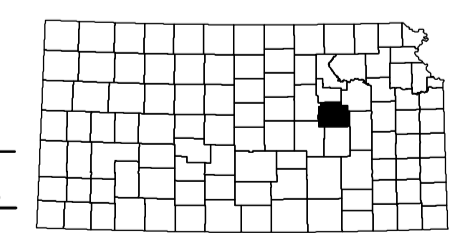
PREPARED BY THE
KANSAS DEPARTMENT OF TRANSPORTATION
BUREAU OF TRANSPORTATION PLANNING
IN COOPERATION WITH
U.S. DEPARTMENT OF TRANSPORTATION
FEDERAL HIGHWAY ADMINISTRATION

0 1 2 3 4 5
Miles

AUGUST 2011
LAMBERT CONFORMAL CONIC PROJECTION

POPULATION - 2000 U.S. CENSUS
APRIL 11, 2011 ESTIMATES AS
CERTIFIED TO THE SECRETARY OF STATE
BY DIVISION OF THE BUDGET JULY 1, 2011

REINVENTORY COMPLETED, 12-21-2010
RURAL SECONDARY
SYSTEMS REVISED TO 11-04-2003
STATE BRIDGE DATA
REVISED TO 01-22-2010
NON-SYS BRIDGE DATA
REVISED TO 10-08-2008



KDOT makes no warranties, guarantees, or representations for accuracy of this information and assumes no liability for errors or omissions.

**COMPUTER
GENERATED**