

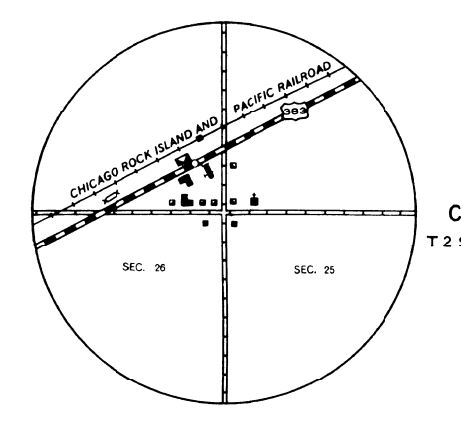
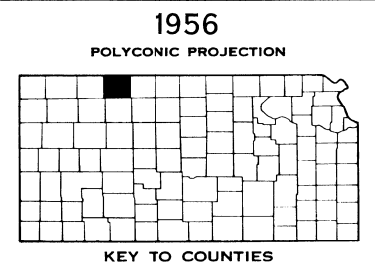
LEGEND

- | | |
|---|---|
| <p>ROADS AND ROADWAY FEATURES</p> <ul style="list-style-type: none"> PRIMITIVE ROAD (TYPE A) UNIMPROVED ROAD (TYPE B) GRADED AND DRAINED ROAD (TYPE C) GRAVEL OR STONE ROAD (TYPE D) GRAVEL OR STONE ROAD WITH STABILIZED SURFACE (TYPE E) BITUMINOUS ROAD-LOW TYPE (TYPE F, S. I. A.) PAVED ROAD (TYPE G, S. I. A.) DIVIDED HIGHWAY SIDE ROADS AND STREETS IN UNINCORPORATED URBAN COMPACTS AND EXTENSIONS OF LOCAL ROADS WITHIN MUNICIPALITIES 4 LANE UNDIVIDED HIGHWAY PRIVATE ROAD PROJECTED ROAD <p>ROAD SYSTEM DESIGNATION</p> <ul style="list-style-type: none"> FEDERAL AID PRIMARY HIGHWAY SYSTEM FEDERAL AID SECONDARY HIGHWAY SYSTEM STATE AID ROAD POINTS BETWEEN WHICH DISTANCES ARE MEASURED INDICATED THUS TRAFFIC CIRCLE CLOVER LEAF U. S. NUMBERED HIGHWAY STATE HIGHWAY SYSTEM OR STATE NUMBERED HIGHWAY END OF DESIGNATED SYSTEM OR MARKED ROUTE <p>RAILROADS</p> <ul style="list-style-type: none"> RAILROAD (TYPE A) RAILROAD (TYPE B) RAILROAD (TYPE C) RAILROAD (TYPE D) RAILROAD (TYPE E) RAILROAD (TYPE F) RAILROAD (TYPE G) RAILROAD (TYPE H) RAILROAD (TYPE I) RAILROAD (TYPE J) RAILROAD (TYPE K) RAILROAD (TYPE L) RAILROAD (TYPE M) RAILROAD (TYPE N) RAILROAD (TYPE O) RAILROAD (TYPE P) RAILROAD (TYPE Q) RAILROAD (TYPE R) RAILROAD (TYPE S) RAILROAD (TYPE T) RAILROAD (TYPE U) RAILROAD (TYPE V) RAILROAD (TYPE W) RAILROAD (TYPE X) RAILROAD (TYPE Y) RAILROAD (TYPE Z) <p>RAILROAD CROSSINGS</p> <ul style="list-style-type: none"> GRADE CROSSING RAILROAD ABOVE RAILROAD BELOW RAILROAD BRIDGE RAILROADS ON STREETS OR ROADS STANDARD GAUGE RAILROAD ELECTRIC RAILROAD <p>AIRWAYS AND AIRPORTS</p> <ul style="list-style-type: none"> AIR ROUTE MILITARY FIELD (TYPE A) AIRPORT COMPLETE FACILITIES (COMMERCIAL OR INDUSTRIAL) AIRFIELD LIMITED FACILITIES LANDING AREA OR STRIP (INCLUDING PRIVATE AIR FIELDS) AIRWAY LIGHT BEACON-GENERAL AIRPORT-GENERAL <p>NAVIGATION</p> <ul style="list-style-type: none"> NAVIGABLE STREAM (NOT CONNECTED WITH NAVIGATION) INTERMITTENT STREAM INTERMITTENT STREAM NARROW STREAM WIDE STREAM DRAINAGE DITCH IRRIGATION DITCH LAKE, RESERVOIR, OR POND WITH DAM DRY LAKE SUBJECT TO FLOOD MARSH OR SWAMP LAND OVERFLOW LAND <p>STRUCTURES</p> <ul style="list-style-type: none"> HIGHWAY BRIDGE RAILROAD BRIDGE SMALL BRIDGES CLOSELY SPACED GENERAL ARCH TRUSS OR GIRDER CANTILEVER BRIDGE COVERED BRIDGE DRAINAGE DITCH HIGHWAY GRADE SEPARATION <p>MISCELLANEOUS STRUCTURES</p> <ul style="list-style-type: none"> DAM WITH ROAD LEVEE OR DIKE LEVEE OR DIKE WITH ROAD CONCRETE FORD OR DIP FORD-ROAD ESTABLISHED CATTLE GUARD GATE ACROSS ROAD <p>BOUNDARIES</p> <ul style="list-style-type: none"> STATE COUNTY CORPORATE LINES BOUNDARY LINES ESTABLISHED FOR DELIMITED URBAN PLACES SECTION LINE MATCH LINE BETWEEN ADJOINING SHEETS OF SAME COUNTY BOUNDARY TO MARK ENLARGEMENT INSET PARKS AND OTHER RESERVATIONS NATIONAL STATE, COUNTY, OR MUNICIPAL PARK INDIAN RESERVATION NATIONAL MONUMENT FEDERAL DEVELOPMENT PROJECT MONUMENT-SMALL HISTORIC SITE <p>CITY AND VILLAGE CENTERS</p> <ul style="list-style-type: none"> STATE CAPITAL COUNTY SEAT OTHER CITIES AND VILLAGES INCORPORATED CITY OR VILLAGE BOUNDARY LIMITS FIXED FOR SPECIAL TAXING AREAS AND OTHER UNINCORPORATED URBAN PLACES DELIMITED | <p>CONSERVATION AND RECREATION</p> <ul style="list-style-type: none"> PICNIC GROUND PLAYGROUND-BALL FIELD, ETC. BATHING BEACH OR SWIMMING POOL SCENIC SITE CAMP SITE, NO PERMANENCE ITEMS OR TRAILER PARKING TOURIST CABIN OR HOTEL (SEMI-DETACHED) CAMP OR LODGE (PERMANENT SITE WITH BUILDINGS) SMALL PARK FISH HATCHERY BIRD SANCTUARY GAME FARM GAME PRESERVE RIFLE CLUB GOLF GROUND OR COUNTRY CLUB FOLD GROUNDS RIDING ACADEMY YACHT CLUB AMUSEMENT PARK OR HALL FAIR GROUND, RACE COURSE, SPEEDWAY DRIVE-IN THEATRE <p>FARM UNITS, DWELLINGS, ETC.</p> <ul style="list-style-type: none"> FARM UNIT ROWS OR GROUPS OF DWELLINGS CLOSELY SPACED (NUMBER SHOWN) COMBINED DWELLING AND STORE DWELLING AND FILLING STATION DWELLING, BUSINESS, AND FILLING STATION TENANT HOUSE SEASONAL OR SUMMER COLONY DWELLING HOTEL INN CHURCH OR OTHER RELIGIOUS INSTITUTION CHURCH AND SCHOOL (LIGHT USE) CEMETERY CHURCH WITH CEMETERY ADJACENT FRESH AIR FARM OR REST HOME HOSPITAL WELL STATE PORT OF ENTRY OR WEIGHT STATION GROUP OF MIXED CULTURAL FEATURES CLOSELY SPACED (NUMBER SHOWN) SHOW NUMBER OF EACH INCLUDED RESOURCES OF QUANTITY <p>INDUSTRIAL</p> <ul style="list-style-type: none"> STORE OR SMALL BUSINESS ESTABLISHMENT BUSINESS AND POST OFFICE BUSINESS AND FILLING STATION BUSINESS, FILLING STATION, AND POST OFFICE FACTORY OR INDUSTRIAL PLANT MINE-SHAFT OR DRIFT (ANY KIND) OIL OR GAS WELL OIL OR GAS FIELD OIL TANK GAS TANK GROUP OF STORAGE TANKS (OIL OR GAS) FILLING STATION (NOT CONNECTED WITH OTHER BUSINESS) PUMPING STATION (OIL OR GAS) GAUGING OR PUMPING STATION (GENERAL) VALVE HOUSE SEASONAL INDUSTRY (SEASONAL OR SMALL SCALE) MILK DEPOT, CREAMERY OR CHEESE FACTORY FRUIT OR NUT ORCHARD FRUIT OR PRODUCE PACKING HOUSE ROAD STAND FARM PRODUCTS SALES WAREHOUSE-GENERAL (IF SEPARATE AND STATE OR COUNTY FARM) GRAIN ELEVATOR C. STORAGE BINS GREENHOUSE NURSERY STOCK YARD-LOADING PEN OR CORRAL STOCK PEN AT RAILROAD STATION GRAVEL PIT QUARRY KILN OR OVEN (CLAY, BRICK, ETC.) <p>EDUCATIONAL AND CORRECTIONAL INSTITUTIONS</p> <ul style="list-style-type: none"> SCHOOLHOUSE CONSOLIDATED OR LARGE SCHOOL TOWNHALL, GRANGE, OR COMMUNITY HALL AGRICULTURAL EXPERIMENT STATION COUNTY FARM CORRECTIONAL INSTITUTION <p>PUBLIC SERVICE FACILITIES</p> <ul style="list-style-type: none"> POST OFFICE HIGHWAY GARAGE FIRE ENGINE HOUSE GARAGE OR RUBBER DUMP SEWAGE DISPOSAL PLANT WATER SUPPLY, STAND PIPE, OR TANK PIPE LINE-GAS PIPE LINE-OIL PIPE LINE-PRODUCTS TRANSMISSION LINE (WITH TRANSFORMER STATION) POWER PLANT POWER SUBSTATION BOOSTER STATION UNDERGROUND TELEPHONE OR RADIO CABLE RADIO STATION (WITH TOWER) RADIO RANGE STATION <p>MISCELLANEOUS</p> <ul style="list-style-type: none"> FORT, ARMY CAMP, BARRACKS, OR OTHER MILITARY POST TRIANGULATION STATION BENCH MARK (WITH ELEVATION) <p>NATURAL FEATURES</p> <ul style="list-style-type: none"> PROMINENT ELEVATION (WITH NAME) SINK OR DEPRESSION |
|---|---|

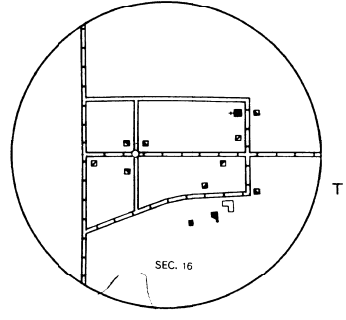
**GENERAL HIGHWAY MAP
NORTON COUNTY
KANSAS**

PREPARED BY THE
STATE HIGHWAY COMMISSION OF KANSAS
HIGHWAY PLANNING DEPARTMENT
IN COOPERATION WITH THE
U. S. DEPARTMENT OF COMMERCE
BUREAU OF PUBLIC ROADS

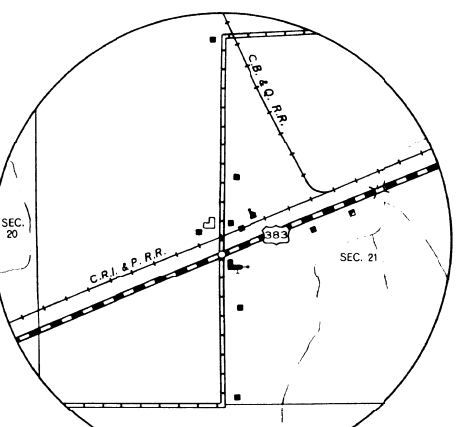
SCALE
0 1 2 3 4 MILES



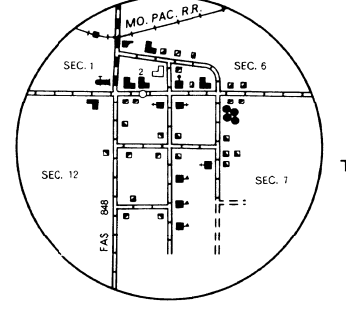
Calvert
T25S R22W



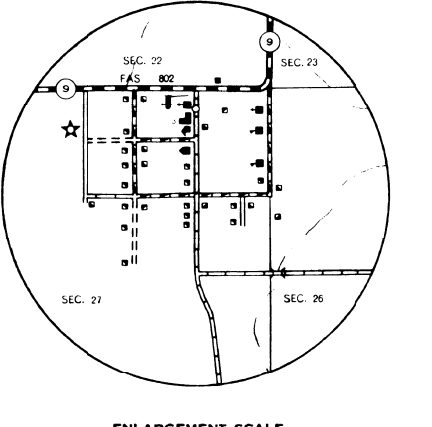
Oronoque
T35S R24W



Dellvale
T35S R24W



Densmore
T55S R21-22W



New Almero
T55S R25W

ENLARGEMENT SCALE
0 1 MILE