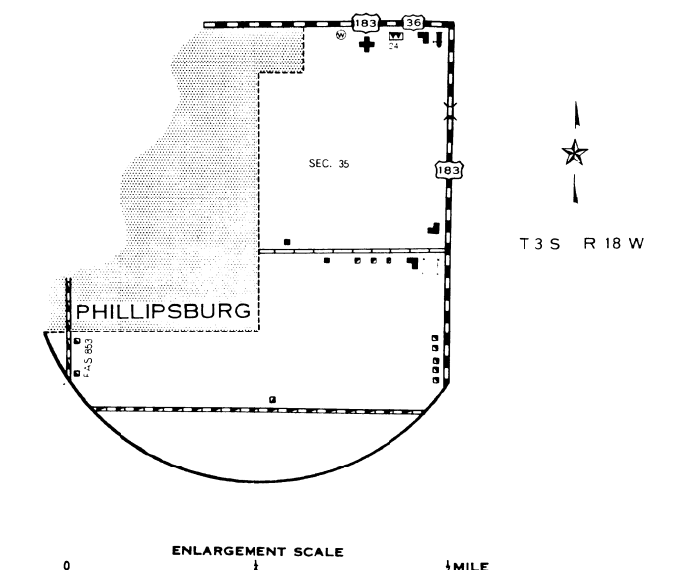
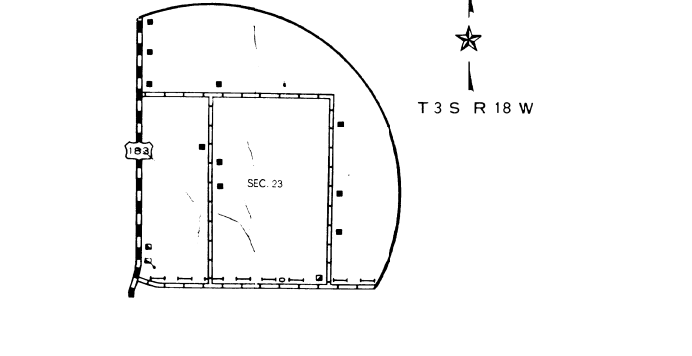
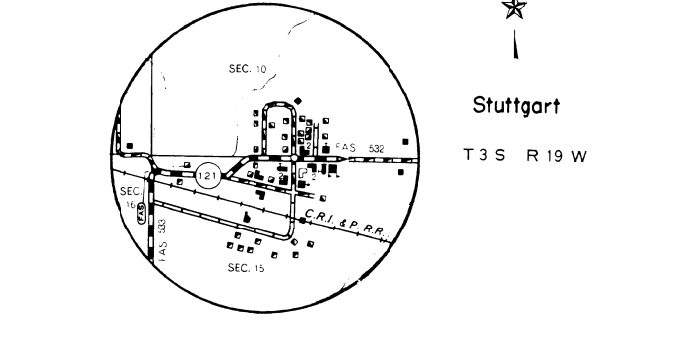
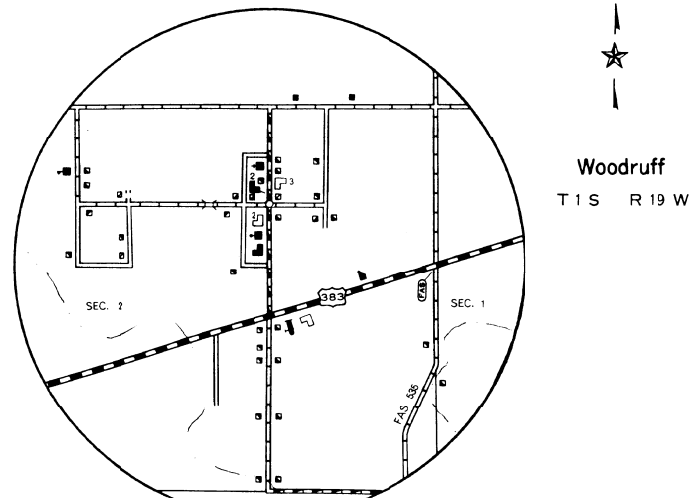
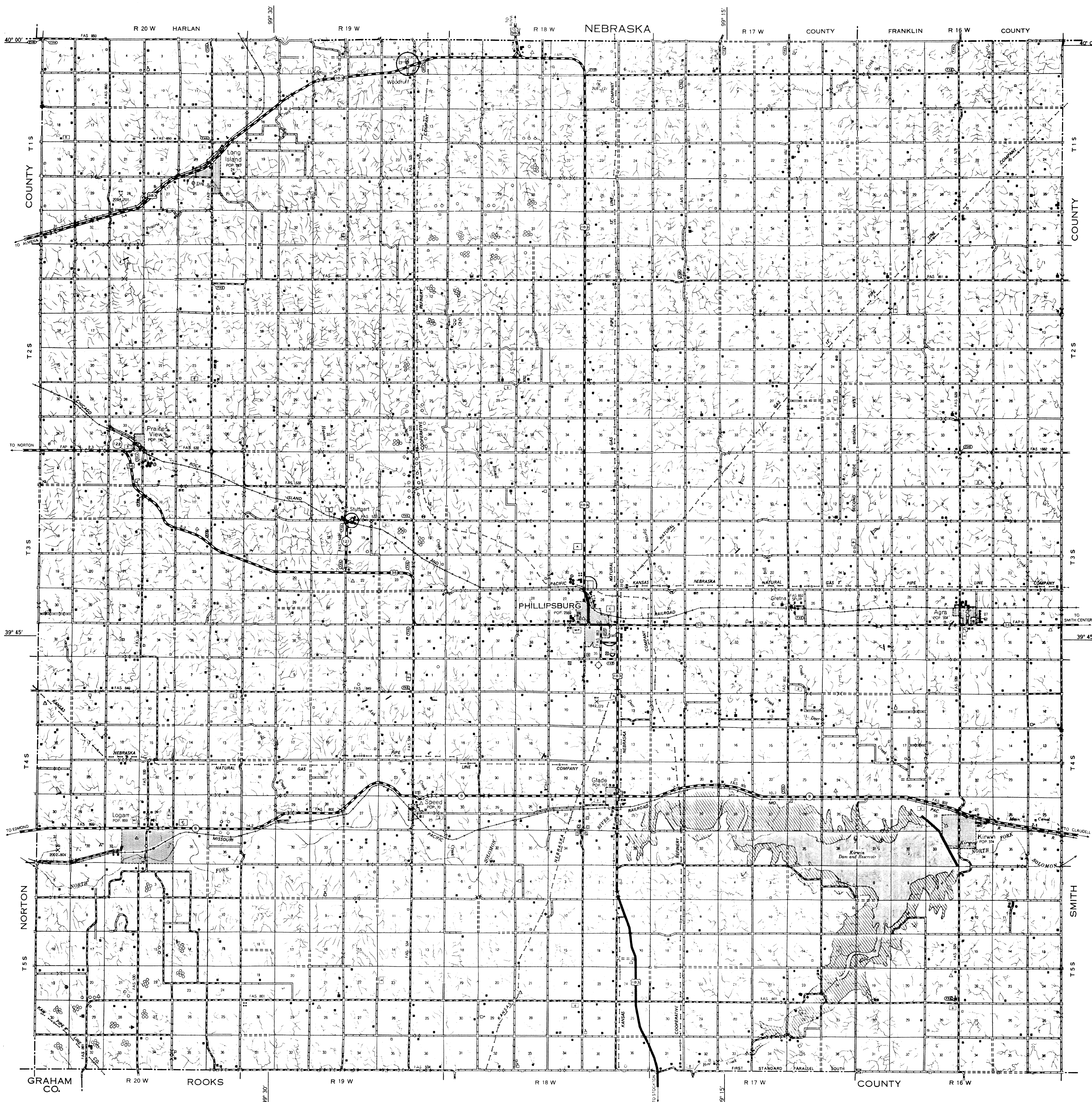


LEGEND

- | | |
|---|---|
| ROADS AND ROADWAY FEATURES | CONSERVATION AND RECREATION |
| PRIMITIVE ROAD (TYPE 1) | PICNIC GROUND |
| UNIMPROVED ROAD (TYPE 2) | PLAYGROUND, BALL FIELD, ETC. |
| GRADED AND DRAINED ROAD (TYPE 3) | BATHING BEACH OR SWIMMING POOL |
| SOIL SURFACED ROAD (TYPE 4) | SCENIC SITE |
| GRAVEL OR STONE ROAD - NOT GRADED OR DRAINED (TYPE 5) | CAMP SITE, NO PERMANENCE (TENTS OR TRAILER PARKING) |
| GRAVEL OR STONE ROAD - GRADED AND DRAINED (TYPE 6) | TOURIST COURT OR HOTEL |
| STABILIZED SURFACE ROAD (TYPE 7) | CAMP OR LODGE (PERMANENT SITE WITH BUILDINGS) |
| BITUMINOUS ROAD - LOW TYPE (TYPE 8) | SMALL PARK |
| PAVED ROAD (TYPE 9) | FISH HATCHERY |
| DIVIDED HIGHWAY | BIRD BANQUETARY |
| SIDE ROADS AND STREETS IN UNINCORPORATED URBAN COMPACTS AND EXTENSIONS OF LOCAL ROADS WITHIN MUNICIPALITIES | CAMP GROUND |
| 4-LANE UNDIVIDED HIGHWAY | GOLF COURSE |
| PRIVATE ROAD | POLO GROUNDS |
| PROJECTED ROAD | RIFLE CLUB |
| | GOLF GROUND OR COUNTRY CLUB |
| | YACHT CLUB |
| | AMUSEMENT PARK OR HALL |
| | FAIR GROUND, RACE COURSE, SPEEDWAY |
| | DRIVE-IN THEATRE |
| ROAD SYSTEM DESIGNATION | FARM UNITS, DWELLINGS, ETC. |
| FEDERAL-AID PRIMARY HIGHWAY SYSTEM | FARM UNIT |
| FEDERAL-AID SECONDARY HIGHWAY SYSTEM | DWELLING - OTHER THAN FARM |
| STATE AID ROAD | ROWS OR GROUPS OF DWELLINGS CLOSELY SPACED |
| POINTS BETWEEN WHICH DISTANCES ARE MEASURED INDICATED THERE | SPACED (FRAME DENOTES NUMBER OF DWELLINGS) |
| TRAFFIC CIRCLE | COMBINED DWELLING AND STORE |
| CLOVER LEAF | DWELLING AND FILLING STATION |
| U. S. NUMBERED HIGHWAY | DWELLING, BUSINESS AND FILLING STATION |
| STATE HIGHWAY SYSTEM OR STATE NUMBERED HIGHWAY | TENANT HOUSE |
| END OF DESIGNATED SYSTEM OR MARKED ROUTE | SEASONAL OR SUMMER COLONY DWELLING |
| RAILROADS | HOTEL, INN |
| RAILROAD - ALL NUMBER OF TRACKS USED BY A RAILROAD COMPANY | CHURCH OR OTHER RELIGIOUS INSTITUTION |
| RAILROADS IN JUNCTION POSITION (TYPE 10) | CHURCH AND SCHOOL (JOINT USE) |
| NARROW GAUGE RAILROAD | CEMETERY |
| ELECTRIC INTERURBAN OR SUBURBAN RAILROAD | CHURCH WITH CEMETERY ADJACENT |
| ABANDONED RAILROAD (TRACK REMOVED) | FRESH AIR FARM OR REST HOME |
| ABANDONED ELECTRIC LINE (TRACK REMOVED) | WELL |
| RAILROAD STATION | STATE PORT OF ENTRY OR WEIGHT STATION |
| RAILROAD CROSSINGS | GROUP OF MIXED CULTURAL FEATURES CLOSELY SPACED |
| GRADE CROSSING | INDUSTRIAL |
| RAILROAD ABOVE | STORE OR SMALL BUSINESS ESTABLISHMENT |
| RAILROAD BELOW | BUSINESS AND FILLING STATION |
| RAILROAD BRIDGE | BUSINESS, FILLING STATION, AND POST OFFICE |
| RAILROADS ON STREETS OR ROADS | FACTORY OR INDUSTRIAL PLANT |
| STANDARD GAUGE RAILROAD | MINESHIFT OR DRIFT (ANY KIND) |
| ELECTRIC RAILROAD | OIL OR GAS WELL |
| AIRWAYS AND AIRPORTS | OIL OR GAS FIELD |
| AIR ROUTE | GAS TANK |
| MILITARY FIELD (SIDE FACILITIES AVAILABLE) | GROUP OF STORAGE TANKS (OIL OR GAS) |
| AIRPORT - COMPLETE FACILITIES (COMMERCIAL OR MUNICIPAL) | FILLING STATION - NOT CONNECTED WITH OTHER BUSINESS |
| AIRFIELD - LIMITED FACILITIES | PUMPING STATION |
| LANDING AREA OR STRIP (INCLUDING PRIVATE AIR FIELDS) | GAUGING OR PUMPING STATION (INDUSTRIAL) |
| AIRWAY LIGHT BEACON - GENERAL | VALVE HOUSE |
| AIRPORT - GENERAL | SEASONAL INDUSTRY (SANDY OR SMALL SHAW MILL) |
| NAVIGATION | MILK DEPOT, CREAMERY OR CHEESE FACTORY |
| NAVIGABLE STREAM (WITH OR WITHOUT DAM) | FRUIT OR NUT ORCHARD |
| INTERMITTENT STREAM | FRUIT OR PRODUCE PACKING HOUSE |
| INTERMITTENT STREAM - BARREN | ROAD STAND FARM PRODUCTS SALES |
| NARROW STREAM | WAREHOUSE - GENERAL (UP GOVERNMENT AND STATE OR U. S. C. C. STORAGE BINS) |
| WIDE STREAM | GREENHOUSE |
| DRAINAGE DITCH | NURSERY |
| IRRIGATION DITCH | STOCK WARE-HOLDING PEN OR CORRAL |
| LAKE, RESERVOIR, OR POND | STOCK PEN AT RAILROAD SIDING |
| LAKE - RESERVOIR OR POND WITH DAM | GRAVEL PIT |
| DRY LAKE SUBJECT TO FLOOD | QUARRY |
| MARSH OR SWAMP LAND | KILN OR OVEN (LIME, CLAY PRODUCTS, ETC.) |
| OVERFLOW LAND | EDUCATIONAL AND CORRECTIONAL INSTITUTIONS |
| STRUCTURES | SCHOOLHOUSE |
| HIGHWAY BRIDGE - GENERAL | CONSOLIDATED OR LARGE SCHOOL |
| SMALL BRIDGES CLOSELY SPACED | TOWNHALL, GRANGE, OR COMMUNITY HALL |
| BRIDGES FOR LONG RIVER CROSSINGS | AGRICULTURAL EXPERIMENT STATION |
| GENERAL | COUNTY FARM |
| ARCH | CORRECTIONAL INSTITUTION |
| TRUSS OR GIRDER (WOOD & STEEL) | PUBLIC SERVICE FACILITIES |
| CANTILEVER BRIDGE | POST OFFICE |
| COVERED BRIDGE | HIGHWAY GARAGE |
| HIGHWAY GRADE SEPARATION | FIRE ENGINE HOUSE |
| MISCELLANEOUS STRUCTURES | GARAGE OR BURNISH DUMP |
| DAM WITH ROAD | SEWAGE DISPOSAL PLANT |
| LEVEE OR DIKE | WATER SUPPLY STAND PIPE OR TANK |
| CONCRETE FORD OR DIP | PIPE LINE - GAS |
| FORD - ROAD ESTABLISHED | PIPE LINE - OIL |
| GATE ACROSS ROAD (ANY TYPE) | PIPE LINE - PRODUCTS |
| BOUNDARIES | TRANSMISSION LINE (WITH TRANSFORMER STATION) |
| STATE COUNTY | POWER PLANT |
| CORPORATE LINES | POWER SUBSTATION |
| BOUNDARY LINES ESTABLISHED FOR DELIMITED URBAN PLACES | BOOSTER STATION |
| SECTION LINE | UNDERGROUND TELEPHONE OR RADIO CABLE |
| MATCH LINE BETWEEN ADJOINING SHEETS OF SAME COUNTY | RADIO STATION (WITH CALL LETTERS) |
| BOUNDARY TO MARK ENLARGEMENT INSET | RADIO RANGE STATION |
| STATE COUNTY OR MUNICIPAL PARK | MISCELLANEOUS |
| INDIAN RESERVATION, NATIONAL MONUMENT, FEDERAL DEVELOPMENT PROJECT | FORT, ARMY CAMP, BARRACKS, OR OTHER |
| MONUMENT - SMALL, HISTORIC SITE | MILITARY POST |
| CITY AND VILLAGE CENTERS | TRIANGULATION STATION |
| STATE CAPITAL | BENCH MARK (WITH ELEVATION) |
| COUNTY SEAT | NATURAL FEATURES |
| OTHER CITIES AND VILLAGES | PROMINENT ELEVATION - WITH NAME |
| INCORPORATED CITY OR VILLAGE | SINK OR DEPRESSION |
| BOUNDARY LIMITS FIXED FOR SPECIAL TAXING AREAS AND OTHER UNINCORPORATED URBAN PLACES DELIMITED | |



ENLARGEMENT SCALE 1 MILE

GENERAL HIGHWAY MAP PHILLIPS COUNTY KANSAS

PREPARED BY THE
STATE HIGHWAY COMMISSION OF KANSAS
HIGHWAY PLANNING DEPARTMENT
IN COOPERATION WITH THE
U. S. DEPARTMENT OF COMMERCE
BUREAU OF PUBLIC ROADS

SCALE 1 MILE

1957

POLYCONIC PROJECTION



KEY TO COUNTIES