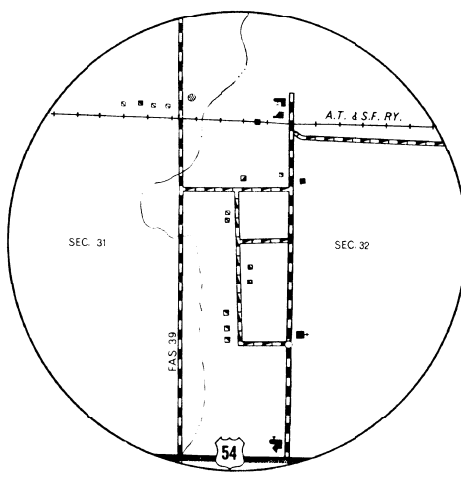


Hopewell
T 26 S R 15 W



Cairo
T 27 S R 11 W

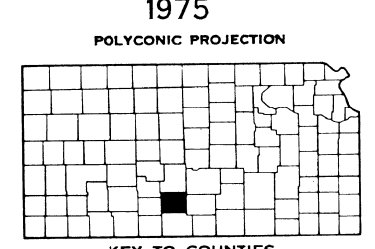
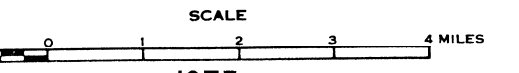


LEGEND	
ROADS AND ROADWAY FEATURES	CONSERVATION AND RECREATION
PRIMITIVE ROAD (TYPE A)	PICNIC GROUND
UNIMPROVED ROAD (TYPE B)	PLAYGROUND, BALL FIELD, ETC.
GRADED AND DRAINED ROAD (TYPE C)	BATHING BEACH OR SWIMMING POOL
SOL. SURFACED ROAD (TYPE D)	SCENIC SITE
GRAVEL OR STONE ROAD	CAMP SITE: NO PERMANENCE (WITH OR WITHOUT FURNISHINGS)
NOT GRADED OR DRAINED (TYPE E)	TOURIST COURT OR MOTEL (WITH OR WITHOUT FURNISHINGS)
GRAVEL OR STONE ROAD WITH STABILIZED SURFACE (TYPE F)	CAMP OR LODGE (PERMANENT SITE WITH BUILDINGS)
BITUMINOUS ROAD-LOW TYPE (TYPE G, S. L. M. H.)	SMALL PARK (SURFACE: GRASS, SAND, ASPHALT)
PAVED ROAD (TYPE H, S. L. M. H.)	FISH HATCHERY
DIVIDED HIGHWAY	BIRD SANCTUARY
HIGHWAY WITH FULL CONTROL OF ACCESS	GAME FARM
SIDE ROADS AND STREETS IN UNINCORPORATED URBAN COMPACTS AND EXTENSIONS OF LOCAL ROADS WITHIN MUNICIPALITIES	GAME PRESERVE
4 LANE UNDIVIDED HIGHWAY	RIFLE CLUB
PRIVATE ROAD	GOLF GROUND OR COUNTRY CLUB
PROJECTED ROAD	POLG GROUND
	RIDING ACADEMY
	YACHT CLUB
	AMUSEMENT PARK OR HALL
	FAIR GROUND, RACE COURSE, SPEEDWAY
	DRIVEN THEATRE
ROAD SYSTEM DESIGNATION	FARM UNITS, DWELLINGS, ETC.
FEDERAL-AID INTERSTATE HIGHWAY SYSTEM	FARM UNIT
FEDERAL-AID PRIMARY HIGHWAY SYSTEM	DWELLING (OTHER THAN FARM)
FEDERAL-AID SECONDARY HIGHWAY SYSTEM	ROWS OR GROUPS OF DWELLINGS CLOSELY SPACED (FROM CENTER NUMBER OF DWELLINGS)
POINTS BETWEEN WHICH DISTANCES ARE MEASURED INDICATED THIS	COMBINED DWELLING AND STORE
INTERSTATE NUMBERED HIGHWAY	DWELLING AND POST OFFICE
U. S. NUMBERED HIGHWAY	DWELLING AND FILLING STATION
STATE HIGHWAY SYSTEM OR STATE NUMBERED HIGHWAY	DWELLING, BUSINESS, AND FILLING STATION
END OF DESIGNATED SYSTEM OR MARKED ROUTE	TENANT HOUSE
	SEASONAL OR SUMMER COLONY DWELLING
	HOTEL, INN
	CHURCH OR OTHER RELIGIOUS INSTITUTION
	CHURCH AND SCHOOL
	CEMETERY
	CHURCH WITH CEMETERY ADJACENT
	FRESH AIR FARM OR REST HOME
	HOSPITAL
	STATE PORT OF ENTRY OR WEIGHT STATION
	GROUP OF MIXED CULTURAL FEATURES CLOSELY SPACED (FROM CENTER NUMBER OF DWELLINGS)
RAILROADS	INDUSTRIAL
RAILROAD (ANY NUMBER OF TRACKS)	STORE OR SMALL BUSINESS ESTABLISHMENT
RAILROAD (ANY NUMBER OF TRACKS) IN ANOTHER ZONE UNDER FEDERAL JURISDICTION	BUSINESS AND POST OFFICE
RAILROAD (ANY NUMBER OF TRACKS) IN A STATE OR TERRITORY UNDER FEDERAL JURISDICTION	BUSINESS AND FILLING STATION
NARROW GAUGE RAILROAD	BUSINESS, FILLING STATION, AND POST OFFICE
ELECTRIC INTERURBAN OR SUBURBAN RAILROAD	FACTORY OR INDUSTRIAL PLANT
ABANDONED RAILROAD (TRACK REMOVED)	MINE-SHAFT OR DRIFT (ANY KIND)
ABANDONED ELECTRIC LINE (TRACK REMOVED)	OIL OR GAS WELL
	OIL OR GAS FIELD
	GAS TANK
	GROUP OF STORAGE TANKS (OIL OR GAS)
	FILLING STATION (NOT CONNECTED WITH OTHER BUSINESS)
	PUMPING STATION (OIL OR GAS)
	CAULDRON OR PUMPING STATION (GENERAL)
	VALVE HOUSE
	SEASONAL INDUSTRY (HAYMOW OR SMALL GRAIN MILL)
	MILK DEPOT, CREAMERY OR CHEESE FACTORY
	FRUIT OR NUT ORCHARD
	FRUIT OR PRODUCE PACKING HOUSE
	ROAD STAND FARM PRODUCTS SALES
	WAREHOUSE (GENERAL, OF GOVERNMENT AND STATE OR GRAN ELEVATOR)
	GROUP OF GRAIN STORAGE BINS
	GREENHOUSE
	NURSERY
	STOCK YARD-LOADING PEN OR CORRAL
	STOCK PEN AT RAILROAD SIDING (SMALL)
	GRAVEL PIT
	QUARRY
	MILL OR OVEN (SILK, OIL PRODUCTS, ETC.)
	EDUCATIONAL AND CORRECTIONAL INSTITUTIONS
	SCHOOLHOUSE
	CONSOLIDATED OR LARGE SCHOOL
	TOWNHALL, GRANARY, OR COMMUNITY HALL
	AGRICULTURAL EXPERIMENT STATION
	COUNTY FARM
	CORRECTIONAL INSTITUTION
	PUBLIC SERVICE FACILITIES
	POST OFFICE
	HIGHWAY GARAGE
	FIRE ENGINE HOUSE
	GARBAGE OR RUBBISH DUMP
	SEWAGE DISPOSAL PLANT
	AUTOSALVAGE YARD
	TRANSFORMER STATION
	POWER PLANT
	POWER SUBSTATION
	BOOSTER STATION
	WATER SUPPLY, STAND PIPE, OR TANK
	RADIO STATION (WITH CALL LETTERS)
	RADIO RANGE STATION
	US WEATHER STATION
	MISCELLANEOUS
	FORT, ARMY CAMP, BARRACKS, OR OTHER
	MILITARY POST
	TRIANGULATION STATION
	BENCH MARK (WITH ELEVATION)
	NATURAL FEATURES
	PROMINENT ELEVATION (WITH NAME AND ELEVATION)
	SINK OR DEPRESSION

**GENERAL HIGHWAY MAP
PRATT COUNTY
KANSAS**

PREPARED BY THE
**STATE HIGHWAY COMMISSION OF KANSAS
PLANNING AND RESEARCH DEPARTMENT**

IN COOPERATION WITH THE
**U. S. DEPARTMENT OF TRANSPORTATION
FEDERAL HIGHWAY ADMINISTRATION**



1975
POLYCONIC PROJECTION