

ROADS AND ROADWAY FEATURES

- Primitive Road (Type A)
- Unimproved Road (Type B)
- Graded and Drained Road (Type C)
- Soft Surfaced Road (Type D)
- Gravel or Stone Road
- Unimproved Road - Low Type (Type F, G-1, H-1)
- Paved Road (Type G-2, H-2, L, J, K, L)
- Divided Highway
- Highway With Full Control of Access
- Side Roads and Streets in Unincorporated Places
- 4 Lane Undivided Highway
- Projected Road

ROAD SYSTEM DESIGNATION

- Rural Secondary System
- Points Between Which Distances are Measured
- Interstate Numbered Highway
- U.S. Numbered Highway
- State Highway System or State Numbered Highway
- End of Designated System or Marked Route
- Kansas Turnpike Authority

RAILROADS

- Railroad - Operating Company
- Railroad Crossing
- Grade Crossing
- Railroad Above
- Railroad Below

ARWAYS AND AIRPORTS

- Military Field (Some Facilities Available)
- Airfield, Limited Facilities
- Airway Light Beacon, General
- Airport, Complete Facilities (Commercial or Municipal)

DRAINAGE

- Major River
- Rivers - (Intermittent)
- Major Drainage - (Intermittent)
- Minor Drainage
- Irrigation Ditch / Canal
- Lake Subject to Flood, Overflow
- Lake, Reservoir, or Pond (NWSH Dam)
- Marsh Land

STRUCTURES

- Highway Bridges, General
- Small Bridges Closely Spaced
- Bridges General - Bridges For Long River Crossings
- Twin Bridges
- Highway Grade Separation

Miscellaneous

- Levee or Dike
- Natural or Concrete Ford
- Gate Across Road (Any Type)

BOUNDARIES

- State
- County
- City Limits
- Section Lines
- Boundary to Mark Embargement Inset
- Parks and Other Reservations National, State, County or Municipal Park, Indian Reservation, National Monument, Federal Development Project
- Urban Boundary

CITIES OR NAMED PLACES

- State Capital
- County Seat
- Unincorporated Place
- Locale
- Incorporated City

CONSERVATION AND RECREATION

- Public Recreation
- State, Texas or Historical Site
- Trailer Park
- Hotel or Motel
- Camp or Lodge (Permanent Site with Building)
- Small Park, CP-State, CP-County
- NM - Municipal, SR - Safety Rest Area
- Fish Hatchery
- Game Preserve or Bird Sanctuary
- Hike Club Public
- Golf Ground or Country Club
- Riding Academy, Saddle Club, Stables
- Race Course, Speedway
- Marine
- Rodeo Grounds
- Fair Grounds

FARM UNITS, DWELLINGS, ETC.

- Dwelling
- Multi Dwelling
- Church or Other Religious Institution
- Cemetery
- Church With Cemetery Adjacent
- Rest Home
- Hospital
- State Port of Entry or Weight Station
- Group or Mixed Cultural Features Closely Spaced (Figure above bar indicates number of dwellings included in the group, figures over individual units show number of each included regardless of order)

INDUSTRIAL

- Store or Small Business Establishment
- Factory
- Mine
- Oil or Gas Well(s)
- Storage Tank(s) (Gas or Oil)
- Pumping or Gauging Station
- Orchard, Tree Farm, Nursery or Greenhouse
- Grain Elevator
- Stock Yard - Loading Pen or Corral
- Quarry
- Feed Lot
- Shopping Center

EDUCATIONAL AND CORRECTIONAL INSTITUTION

- Schoolhouse
- Grange, Townhall or Community Hall
- K.S.U. Agricultural Research Center
- Correctional Institution
- Museum - General
- Public Library

PUBLIC SERVICE FACILITIES

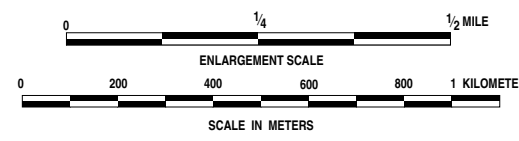
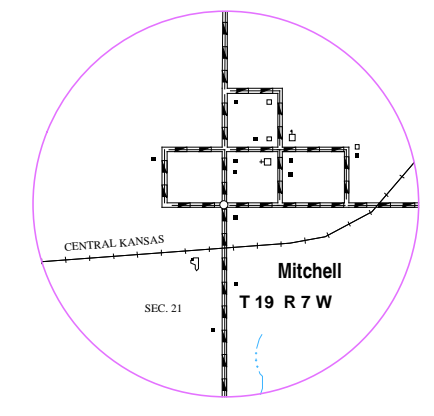
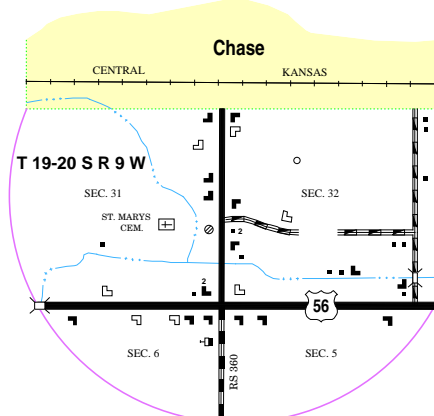
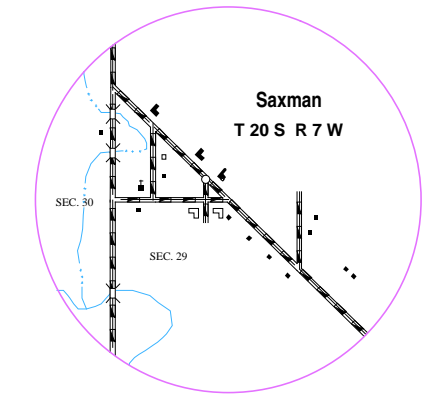
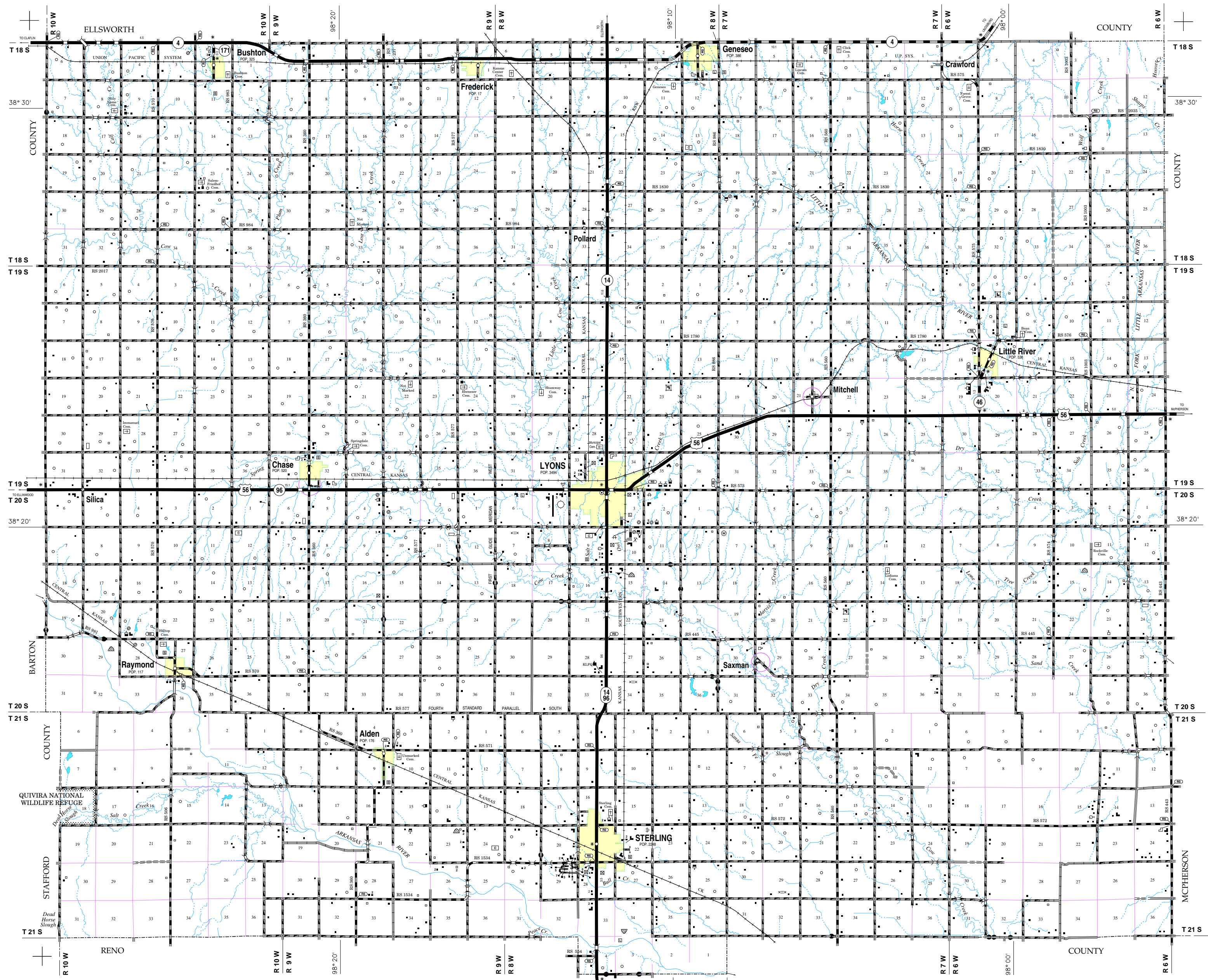
- Post Office
- Road Maintenance Shop
- Fire Engine House
- Landfill
- Sewage Disposal Plant
- Salvage Yard
- Power Plant
- Power Substation
- Water Tower
- Rails Station (With Chf Letters)
- Water Treatment Plant
- U.S. Corps of Engineers Office

NATURAL FEATURES

- Prominent Elevation - With Name (Numerals Indicate Elevation Above Sea Level)

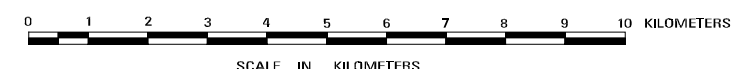
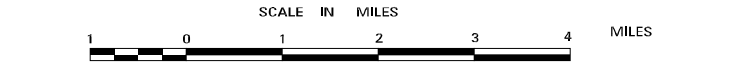
MISCELLANEOUS

- Fort, Army Camp, Barracks or Other Military Post

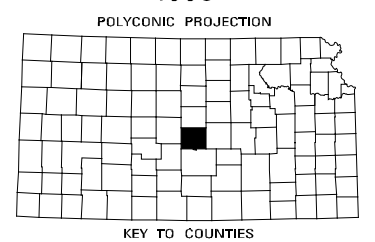


GENERAL HIGHWAY MAP RICE COUNTY KANSAS

PREPARED BY THE
KANSAS DEPARTMENT OF TRANSPORTATION
BUREAU OF TRANSPORTATION PLANNING
IN COOPERATION WITH THE
U. S. DEPARTMENT OF TRANSPORTATION
FEDERAL HIGHWAY ADMINISTRATION



1996



KEY TO COUNTIES

POPULATION: 1990 U.S. CENSUS
GEOGRAPHY BY THE SECRETARY OF STATE
BY ORDER OF THE GOVERNOR JULY 1, 1996
REVISIONS COMPLETED: 7-12-96
RURAL SECONDARY
SYSTEMS REVISED TO: 10-10-96

COMPUTER
GENERATED

SCANNED FROM NON-STABLE BASE