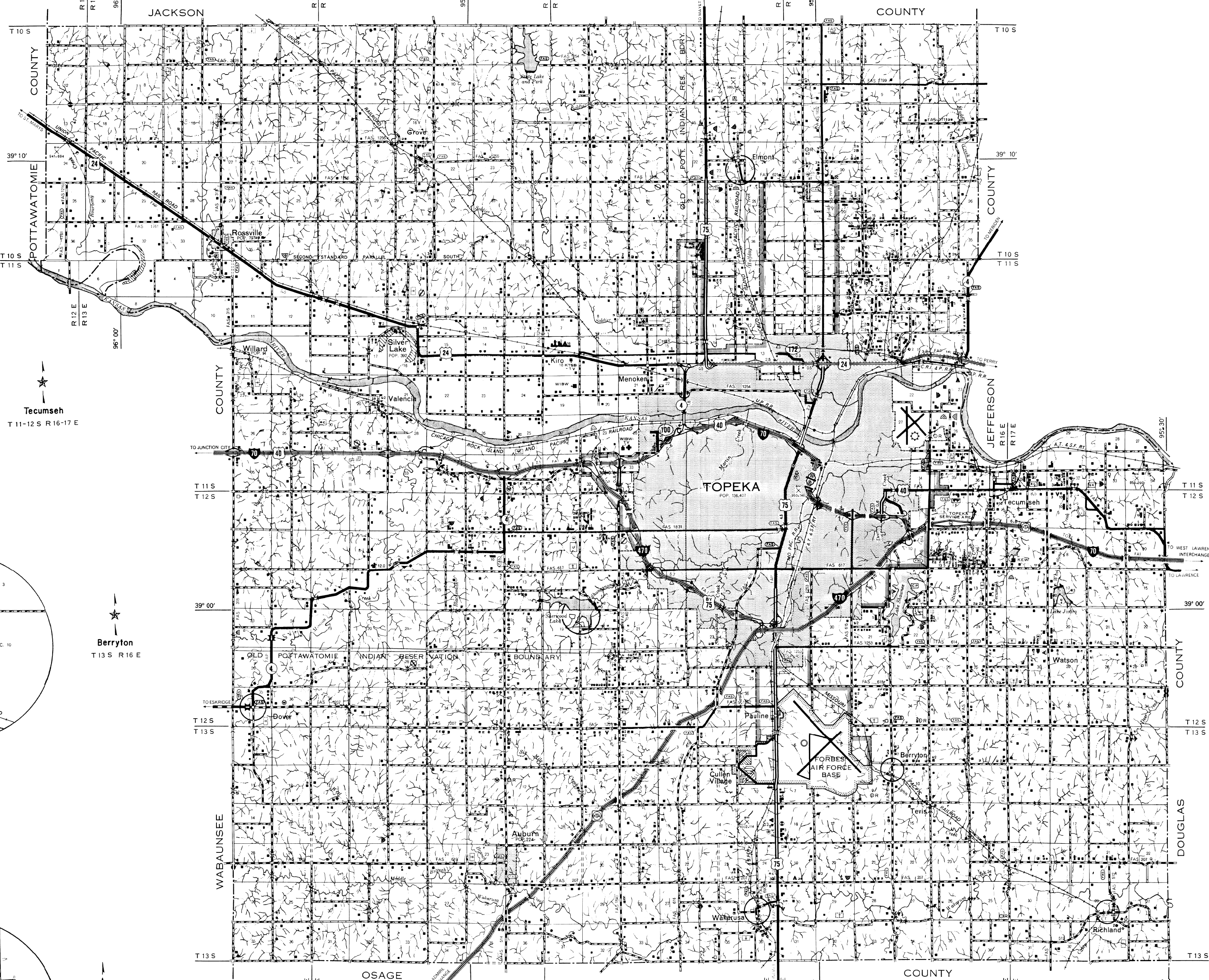
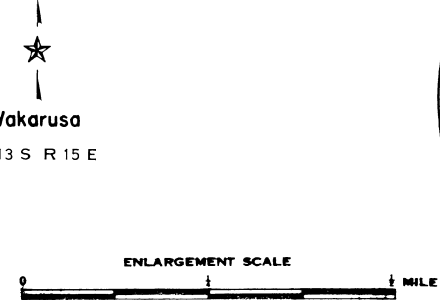
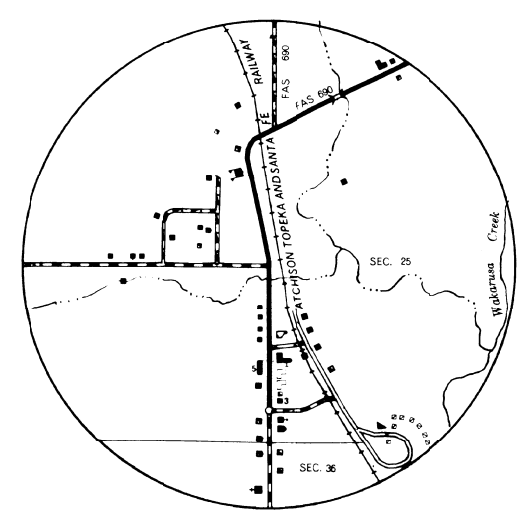
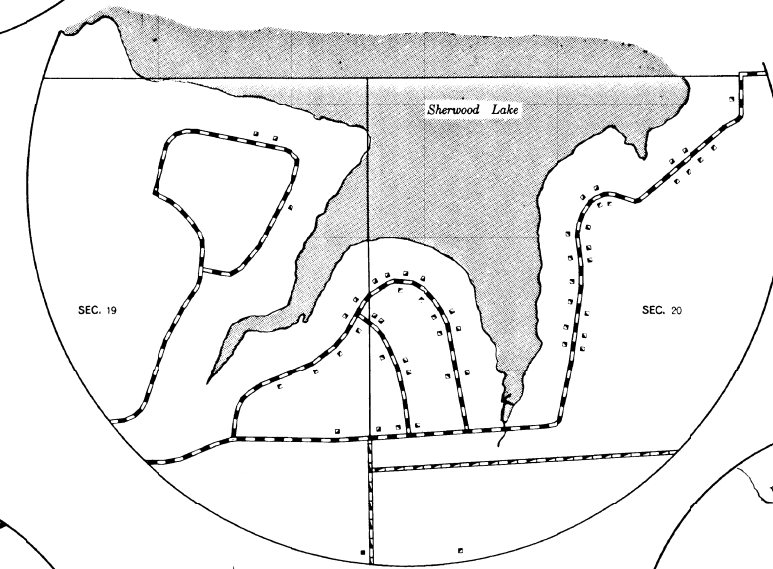
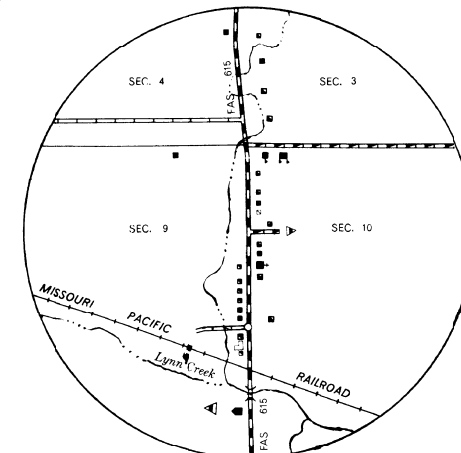
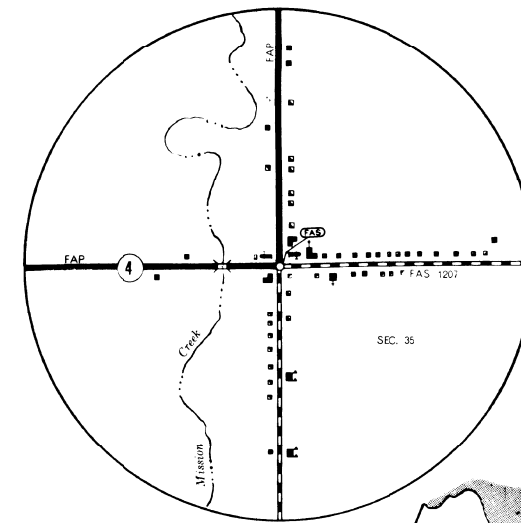
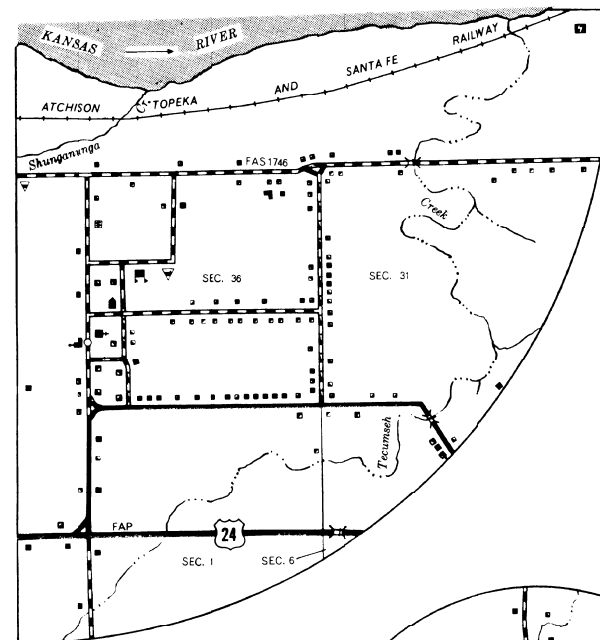
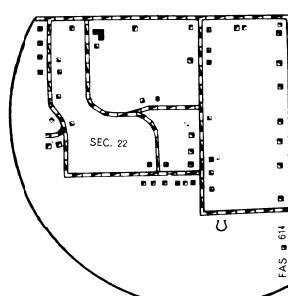
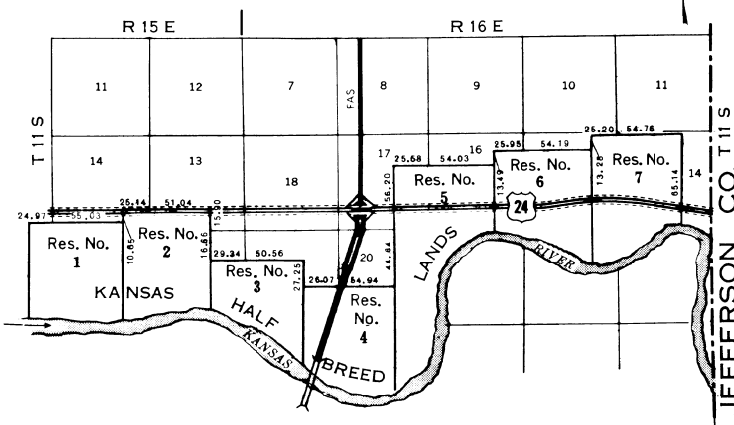


DETAIL OF KANSAS HALF BREED LANDS  
ADJACENT TO NORTH TOPEKA  
MEASUREMENTS PERTAINING TO  
RESERVES SHOWN IN CHAINS



LEGEND

- |  |   |
|--|---|
| <p><b>ROADS AND ROADWAY FEATURES</b></p> <ul style="list-style-type: none"> <li>PRIMITIVE ROAD TYPE A1</li> <li>UNIMPROVED ROAD TYPE B1</li> <li>GRADED AND DRAINED ROAD TYPE C1</li> <li>SOIL SURFACED ROAD TYPE D1</li> <li>GRAVEL OR STONE ROAD - NOT GRADED OR DRAINED TYPE E1</li> <li>GRAVEL OR STONE ROAD - GRADED AND DRAINED TYPE E2</li> <li>GRAVEL OR STONE ROAD WITH STABILIZED SURFACE TYPE E3</li> <li>BITUMINOUS ROAD-LOW TYPE TYPE F1</li> <li>PAVED ROAD TYPE G1</li> <li>DIVIDED HIGHWAY</li> <li>HIGHWAY WITH FULL CONTROL OF ACCESS</li> <li>SIDE ROADS AND STREETS IN UNINCORPORATED URBAN COMPACTS AND EXTENSIONS OF LOCAL ROADS WITHIN MUNICIPALITIES</li> <li>4 LANE UNDIVIDED HIGHWAY</li> <li>PRIVATE ROAD</li> <li>PROJECTED ROAD</li> </ul> <p><b>ROAD SYSTEM DESIGNATION</b></p> <ul style="list-style-type: none"> <li>FEDERAL AID INTERSTATE HIGHWAY SYSTEM</li> <li>FEDERAL AID PRIMARY HIGHWAY SYSTEM</li> <li>FEDERAL AID SECONDARY HIGHWAY SYSTEM</li> <li>POINTS BETWEEN WHICH DISTANCES ARE MEASURED INDICATED THUS</li> <li>INTERSTATE NUMBERED HIGHWAY</li> <li>U.S. NUMBERED HIGHWAY</li> <li>STATE HIGHWAY SYSTEM OR STATE NUMBERED HIGHWAY</li> <li>END OF DESIGNATED SYSTEM OR MARKED ROUTE</li> </ul> <p><b>RAILROADS</b></p> <ul style="list-style-type: none"> <li>RAILROAD (TRACK NETWORK)</li> <li>RAILROADS IN DISPOSITION (TRUCK OR HOME)</li> <li>RAILROAD</li> <li>NARROW GAUGE RAILROAD</li> <li>ELECTRIC INTERURBAN OR SUBURBAN RAILROAD</li> <li>ABANDONED RAILROAD (TRACK NETWORK)</li> <li>ABANDONED ELECTRIC LINE (TRACK NETWORK)</li> <li>RAILROAD STATION</li> </ul> <p><b>RAILROAD CROSSINGS</b></p> <ul style="list-style-type: none"> <li>GRADE CROSSING</li> <li>RAILROAD ABOVE</li> <li>RAILROAD BELOW</li> <li>RAILROAD BRIDGE</li> </ul> <p><b>AIRWAYS AND AIRPORTS</b></p> <ul style="list-style-type: none"> <li>AIR ROUTE</li> <li>MILITARY FIELD (SOME FACILITIES AVAILABLE)</li> <li>AIRPORT, COMPLETE FACILITIES (GENERAL OR BUSINESS)</li> <li>AIRFIELD, LIMITED FACILITIES</li> <li>LANDING AREA OR STRIP</li> <li>AIRWAY, LIGHT BEACON, GENERAL</li> <li>AIRPORT, GENERAL</li> </ul> <p><b>NAVIGATION</b></p> <ul style="list-style-type: none"> <li>NAVIGABLE STREAM (NO INTERFERING NAVIGATION)</li> <li>INTERMITTENT STREAM</li> <li>INTERMITTENT STREAM (NO NAVIGATION)</li> <li>NARROW STREAM</li> <li>WIDE STREAM</li> <li>DRAINAGE DITCH</li> <li>LAKE, RESERVOIR, OR POND</li> <li>LAKE, RESERVOIR, OR POND WITH DAM</li> <li>DRY LAKE SUBJECT TO FLOOD</li> <li>MARSH OR SWAMP LAND</li> <li>OVERFLOW LAND</li> </ul> <p><b>STRUCTURES</b></p> <ul style="list-style-type: none"> <li>HIGHWAY BRIDGE, GENERAL</li> <li>RAILROAD BRIDGE</li> <li>SMALL BRIDGES CLOSELY SPACED</li> <li>BRIDGES FOR LONG RIVER CROSSINGS</li> </ul> <p><b>GENERAL</b></p> <ul style="list-style-type: none"> <li>ARCH</li> <li>TRUSS OR GIRDER</li> <li>CANTILEVER BRIDGE</li> <li>COVERED BRIDGE</li> <li>HIGHWAY GRADE SEPARATION</li> <li>MISCELLANEOUS STRUCTURES</li> <li>DAM WITH ROAD</li> <li>LEVEE OR DIKE</li> <li>CONCRETE FORD OR DIP</li> <li>FORD-ROAD ESTABLISHED</li> <li>CATTLE GUARD</li> <li>GATE ACROSS ROAD (ANY TYPE)</li> </ul> <p><b>BOUNDARIES</b></p> <ul style="list-style-type: none"> <li>STATE</li> <li>COUNTY</li> <li>CORPORATE LINES</li> <li>BOUNDARY LINES ESTABLISHED FOR DELIMITED URBAN PLACES</li> <li>SECTION LINE</li> <li>MATCH LINE BETWEEN ADJOINING SHEETS OF SAME COUNTY</li> <li>BOUNDARY TO MARK ENLARGEMENT INSET</li> <li>PARKS AND OTHER RESERVATIONS NATIONAL</li> <li>STATE CAPITAL</li> <li>COUNTY SEAT</li> <li>OTHER CITIES AND VILLAGES</li> <li>INCORPORATED CITY OR VILLAGE</li> <li>BOUNDARY LIMITS FIXED FOR SPECIAL TAXING AREAS AND OTHER UNINCORPORATED URBAN PLACES DELIMITED</li> </ul> | <p><b>CONSERVATION AND RECREATION</b></p> <ul style="list-style-type: none"> <li>PICNIC GROUND</li> <li>PLAYGROUND, BALL FIELD, ETC.</li> <li>BATHING BEACH OR SWIMMING POOL</li> <li>SCENIC SITE</li> <li>CAMP SITE, NO PERMANENCE (TENTS OR TRAILER PARKING)</li> <li>CAMP OR LODGE (PERMANENT SITE WITH BUILDINGS)</li> <li>SMALL PARK</li> <li>FISH HATCHERY</li> <li>BIRD SANCTUARY</li> <li>GAME FARM</li> <li>GAME PRESERVE</li> <li>RIFLE CLUB</li> <li>GOLF GROUND OR COUNTRY CLUB</li> <li>POLIO GROUND</li> <li>RINGS ACADEMY</li> <li>YACHT CLUB</li> <li>AMUSEMENT PARK OR HALL</li> <li>FAIR GROUND, RACE COURSE, SPEEDWAY</li> <li>DRIVE-IN THEATRE</li> </ul> <p><b>FARM UNITS, DWELLINGS, ETC.</b></p> <ul style="list-style-type: none"> <li>FARM UNIT</li> <li>DWELLING (OTHER THAN FARM)</li> <li>ROWS OR GROUPS OF DWELLINGS CLOSELY SPACED (INDICATE NUMBER OF DWELLINGS)</li> <li>COMBINED DWELLING AND STORE</li> <li>DWELLING AND POST OFFICE</li> <li>DWELLING AND FILLING STATION</li> <li>DWELLING, BUSINESS, AND FILLING STATION</li> <li>TENANT HOUSE</li> <li>SEASONAL OR SUMMER COLONY DWELLING</li> <li>HOTEL, INN</li> <li>CHURCH OR OTHER RELIGIOUS DWELLING</li> <li>CHURCH AND SCHOOL</li> <li>CEMETERY</li> <li>CHURCH WITH CEMETERY ADJACENT</li> <li>FRESH AIR FARM OR REST HOME</li> <li>HOSPITAL</li> <li>WELL</li> <li>STATE PORT OF ENTRY OR WEIGHT STATION</li> <li>GROUP OF MIXED CULTURAL FEATURES CLOSELY SPACED</li> <li>INDICATE NUMBER OF EACH INCLUDED RESOURCES OF SUBJECT</li> </ul> <p><b>INDUSTRIAL</b></p> <ul style="list-style-type: none"> <li>STORE OR SMALL BUSINESS ESTABLISHMENT</li> <li>BUSINESS AND POST OFFICE</li> <li>BUSINESS AND FILLING STATION</li> <li>BUSINESS, FILLING STATION, AND POST OFFICE</li> <li>FACTORY OR INDUSTRIAL PLANT</li> <li>MINE, SHAFT OR DRIFT (ANY KIND)</li> <li>OIL OR GAS WELL</li> <li>OIL OR GAS FIELD</li> <li>OIL TANK</li> <li>GAS TANK</li> <li>GROUP OF STORAGE TANKS (OIL OR GAS)</li> <li>FILLING STATION (NOT CONNECTED WITH OTHER BUSINESS)</li> <li>PUMPING STATION (OIL OR GAS)</li> <li>GAUGING OR PUMPING STATION</li> <li>VALVE HOUSE</li> <li>SEASONAL INDUSTRY (FRUIT OR SMALL FARM WAREHOUSE)</li> <li>MILK DEPOT, CREAMERY OR CHEESE FACTORY</li> <li>FRUIT OR NUT ORCHARD</li> <li>FRUIT OR PRODUCE PACKING HOUSE</li> <li>ROAD STAND FARM PRODUCTS SALES</li> <li>WAREHOUSE - GENERAL (IF GOVERNMENT AND STATE OR U.S.)</li> <li>GRAIN ELEVATOR</li> <li>GROUP OF GRAIN STORAGE BINS</li> <li>GREENHOUSE</li> <li>HURSEY</li> <li>STOCK YARD - LOADING PEN OR CORRAL</li> <li>STOCK PEN AT RAILROAD SIDING (GENERAL)</li> <li>GRAVEL PIT</li> <li>QUARRY</li> <li>KILN OR OVEN (CLAY PRODUCTS, COOK, ETC.)</li> </ul> <p><b>EDUCATIONAL AND CORRECTIONAL INSTITUTIONS</b></p> <ul style="list-style-type: none"> <li>SCHOOLHOUSE</li> <li>CONSOLIDATED OR LARGE SCHOOL</li> <li>TOWNHALL, GRANGE, OR COMMUNITY HALL</li> <li>AGRICULTURAL EXPERIMENT STATION</li> <li>COUNTY FARM</li> <li>CORRECTIONAL INSTITUTION</li> </ul> <p><b>PUBLIC SERVICE FACILITIES</b></p> <ul style="list-style-type: none"> <li>POST OFFICE</li> <li>HIGHWAY GARAGE</li> <li>FIRE ENGINE HOUSE</li> <li>GARBAGE OR RUBBISH DUMP</li> <li>SEWAGE DISPOSAL PLANT</li> <li>AUTO SALVAGE YARD</li> <li>TRANSFORMER STATION</li> <li>POWER PLANT</li> <li>POWER SUBSTATION</li> <li>BOOSTER STATION</li> <li>WATER SUPPLY - STAND PIPE, OR TANK</li> <li>RADIO STATION (WITH CALL LETTERS)</li> <li>RADIO RANGE STATION</li> </ul> <p><b>MISCELLANEOUS</b></p> <ul style="list-style-type: none"> <li>FORT, ARMY CAMP, BARRACKS, OR OTHER MILITARY POST</li> <li>TRIANGULATION STATION</li> <li>BENCH MARK (WITH ELEVATION)</li> </ul> <p><b>NATURAL FEATURES</b></p> <ul style="list-style-type: none"> <li>PROMINENT ELEVATION WITH NAME</li> <li>SINK OR DEPRESSION</li> </ul> |
|--|---|

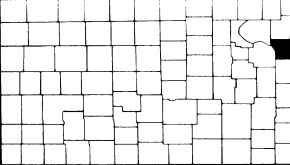
GENERAL HIGHWAY MAP  
SHAWNEE COUNTY  
KANSAS

PREPARED BY THE  
STATE HIGHWAY COMMISSION OF KANSAS  
DEPARTMENT OF PLANNING AND DEVELOPMENT  
IN COOPERATION WITH THE  
U. S. DEPARTMENT OF TRANSPORTATION  
FEDERAL HIGHWAY ADMINISTRATION  
BUREAU OF PUBLIC ROADS

SCALE 0 1 2 3 4 MILES

1969

POLYCONIC PROJECTION



KEY TO COUNTIES  
REINVENTORY COMPLETED 6-22-69  
F. A. AND STATE  
SYSTEMS REVISED TO 8-1-69