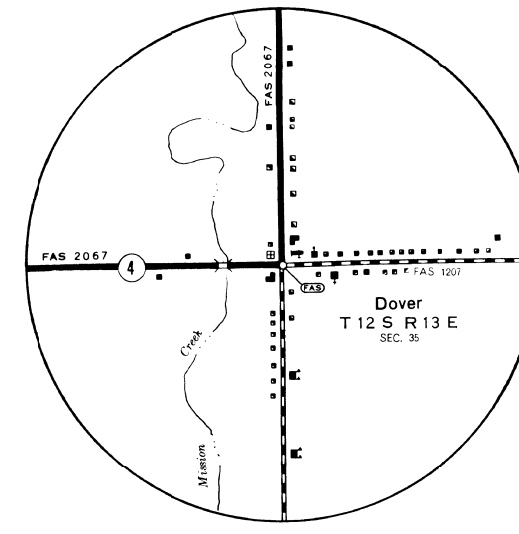
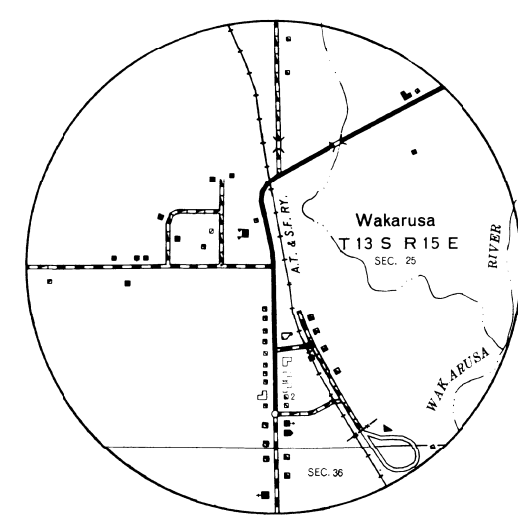
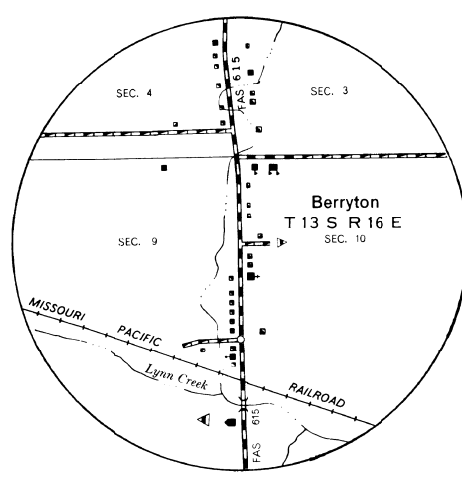
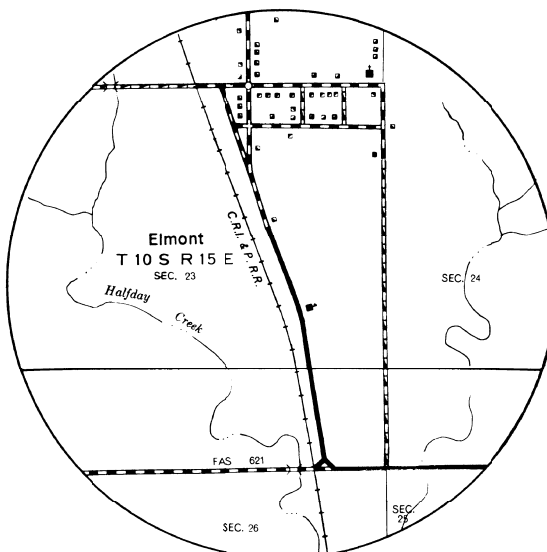
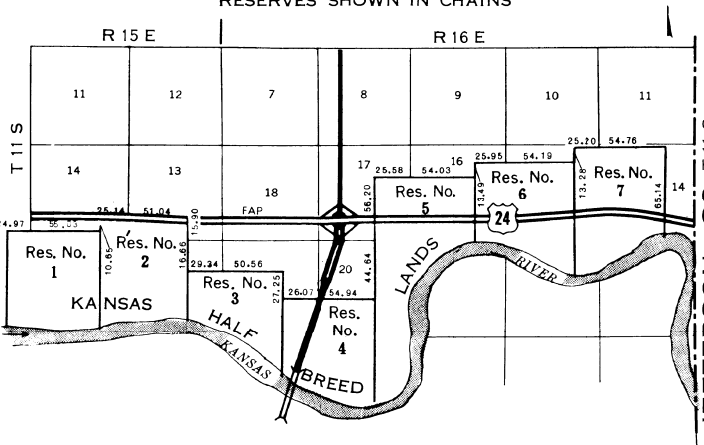


**DETAIL OF KANSAS HALF BREED LANDS
ADJACENT TO NORTH TOPEKA**

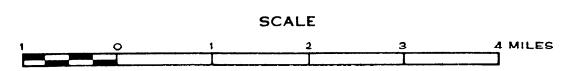


LEGEND

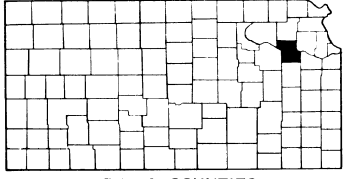
ROADS AND ROADWAY FEATURES	
Frontage Road (Type A)
Unimproved Road (Type B)
Graded and Drained Road (Type C)
Soil Surfaced Road (Type D)
Gravel or Stone Road—Not Graded or Drained (Type E-1)
Gravel or Stone Road—Graded and Drained (Type E-2)
Gravel or Stone Road With Stabilized Surface (Type E-3)
Burnt Road—Low Type (Type F, G-1, H-1)
Paved Road Type G-2, H-2, I, J, K, L
Divided Highway
Highway With Full Control of Access
Side Roads and Streets in Unincorporated Urban Compact and Extensions of Local Roads Within Municipalities
Lane Unimproved Highway
Projected Road
Road System Designation	
Federal Aid Interstate Highway System
Federal Aid Primary Highway System
Federal Aid Secondary Highway System
Federal Aid Urban Highway System
Points Between Which Distances are Measured
Interstate Numbered Highway
U.S. Numbered Highway
State Highway System or State Numbered Highway
End of Designated System or Marred Road
RAILROADS	
Railroad (Any Number of Tracks Used by a Single Operating Company or by Trains of Another Carrier Under Trackage Rights)
Railroads in Joint Operation (Two or More Tracks of Separately Operated Companies on Adjacent Rights-of-Way)
Abandoned Railroad (Track Retained)
Railroad Crossing	
Grade Crossing
Railroad Above
Railroad Below
Railroad Bridge
AIRWAYS AND AIRPORTS	
Military Field (Stone Facilities Available)
Airport Complex Facilities (Commercial or Municipal)
Airfield
Landing Area or Strip (Including Private Air Fields)
Airway Light Beacon, General
Airport, General
NAVIGATION	
Navigable Stream (All—irrespective of navigation)
DRAINAGE	
Intermittent Stream (Narrow)
Intermittent Stream (Wide)
Narrow Stream
Wide Stream
Drainage Ditch
Irrigation Canal
Lake, Reservoir, or Pond
Lake, Reservoir, or Pond With Dam
Dry, Lake Subject to Flood
Marsh or Swamp Land
Overflow Land
STRUCTURES	
Highway Bridge, General
(Total Span Greater Than 20 Feet)
Small Bridges Closely Spaced
Bridges For Long River Crossings
General
Arch
Truss or Girder (in wood or steel)
Cantilever Bridge
Highway Grade Separation
Miscellaneous Structures	
Levee or Dike
Levee or Dike With Road
Concrete Ford or Dip
Ford Road Established
Gate Guard
Gate Access Road (Any Type)
BOUNDARIES	
State
County
Corporate Lines
Boundary Lines Established For Delimited Urban Places
Section Line
Parks and Other Reservations National, State, County, or Municipal Park, Indian Reservation, National Monument, Federal Development Project
Monument—Small Historic Site
CITY AND VILLAGE CENTERS	
State Capital
County Seat
Other Cities and Villages
Unincorporated City or Village
Boundary Limits Fixed for Special Taxing Areas and Other Unincorporated Urban Places Defined
NATURAL FEATURES	
Prominent Elevation—With Name
(Numerals Indicate Elevation Above Sea Level)
Sink or Depression
CONSERVATION AND RECREATION	
Picnic Ground
Playground (Ball Field, Etc.)
Bathing Beach or Swimming Pool
Some Site
Camp Site, No Permanent Tents or Trailer Parking
Tourist Court or Motel (Figure Indicates Number of Permanent Cabins or Cottages)
Camp or Lodge (Permanent Site With Building)
Small Park (SP—State, CP—County)
MP—Municipal, SR—State, R—Reserve
Fish Hatchery
But Sanctuary
Game Farm
Game Preserve
Hill
Golf Grounds or Country Club
Riding Academy
Yacht Club
Amusement Park or Hall
Fair Ground, Race Course, Speedway
Drive-in Theatre
Marina
Roddy Grounds
Guide House or Gate House (Add Letters N or S to Indicate National or State Park)
FARM UNITS, DWELLINGS, ETC.	
Farm Unit
Dwelling (Other Than Farm)
Rows or Groups of Dwellings Closely Spaced (Figure Denotes Number of Dwellings)
Continued Dwelling and Store
Dwelling and Fruit Office
Dwelling and Filling Station
Tractor House
Seasonal or Summer Colony Dwelling
Home Inn
Humanity Society Quarters
Church or Other Religious Institution
Church and School (Joint Use)
Cemetery
Church With Cemetery Adjacent
Fresh Air Farm or Rest Home
Hospital
Well
State Point of Entry or Weight Station
Group of Mixed Cultural Features Closely Spaced (Figure Above Bar Indicates Number of Buildings Included in the Group; Figures Over Individual Units Show Number of Each Included regardless of order)
INDUSTRIAL	
Store or Small Business Establishment
Business and Office
Business and Filling Station
Business, Filling Station, and Post Office
Factory or Industrial Plant
Mill (Saw or Grind (Any Kind))
Oil or Gas Well
Oil or Gas Field
Storage Tank (Gas or Oil Figure Denotes Number of Tanks)
Filling Station (Not Connected With Other Business)
Pumping Station (Oil or Gas)
Gauging or Pumping Station (General)
Valve House
Seasonal Industry (Cannery or Small Grain Mill)
Milk Depot, Creamery or Cheese Factory
Fruit or Nut Orchard
Fruit or Produce Packing House
Road Stand Farm Products Sales
Warehouse—General (If Government Add State or U.S.)
Green Elevator
Group of Grain Storage Bins
Greenhouse
Nursery
Stock Yard (Loading Pen or Corral)
Stock Pen at Railroad Siding (Small)
Quarry
Quarry (Lime, Clay, Brick, etc.)
Feed Lot
Shopping Center
Seasonal Business
Sawmill (Stationary)
EDUCATIONAL AND CORRECTIONAL INSTITUTIONS	
Schoolhouse
Consolidated or Large School
Township, Grange or Community Hall
Agricultural Experiment Station
Correctional Institution
Museum—General
Public Library
PUBLIC SERVICE FACILITIES	
Post Office
Highway Garage
Fire Engine House
Fire Engine House
Garbage or Rubbish Dump
Sewage Disposal Plant
Auto Salvage Yard
Transformer Station
Power Plant
Power Substation
Booster Station
Water Supply, Stand Pipe, or Tank
Radio Station (With Call Letters)
Radio Range Station
Water Treatment Plant
Juniper
U.S. Corps of Engineers Office
MISCELLANEOUS	
Fort Army Camp, Barracks, or Other Military Post
Transportation Station
Bench Mark (With Elevation)

**GENERAL HIGHWAY MAP
SHAWNEE COUNTY
KANSAS**

PREPARED BY THE
KANSAS DEPARTMENT OF TRANSPORTATION
PLANNING AND DEVELOPMENT DEPARTMENT
IN COOPERATION WITH THE
U. S. DEPARTMENT OF TRANSPORTATION
FEDERAL HIGHWAY ADMINISTRATION



1977
POLYCONIC PROJECTION



NOTE—THE CHICAGO, ROCK ISLAND AND PACIFIC R.R. HAS TRACKAGE RIGHTS FROM TOPEKA AVE. BRIDGE TO THE SHAWNEE—JEFFERSON CO. LINE

POPULATIONS—STATE BOARD OF AGRICULTURE SURVEY

RE-ENUMERATION COMPLETED 3-17-77
F.A. AND STATE SYSTEMS REVISED TO 3-17-77