

Eisenhower Legacy Transportation Program Overview

February 11, 2021



KDOT



IKE



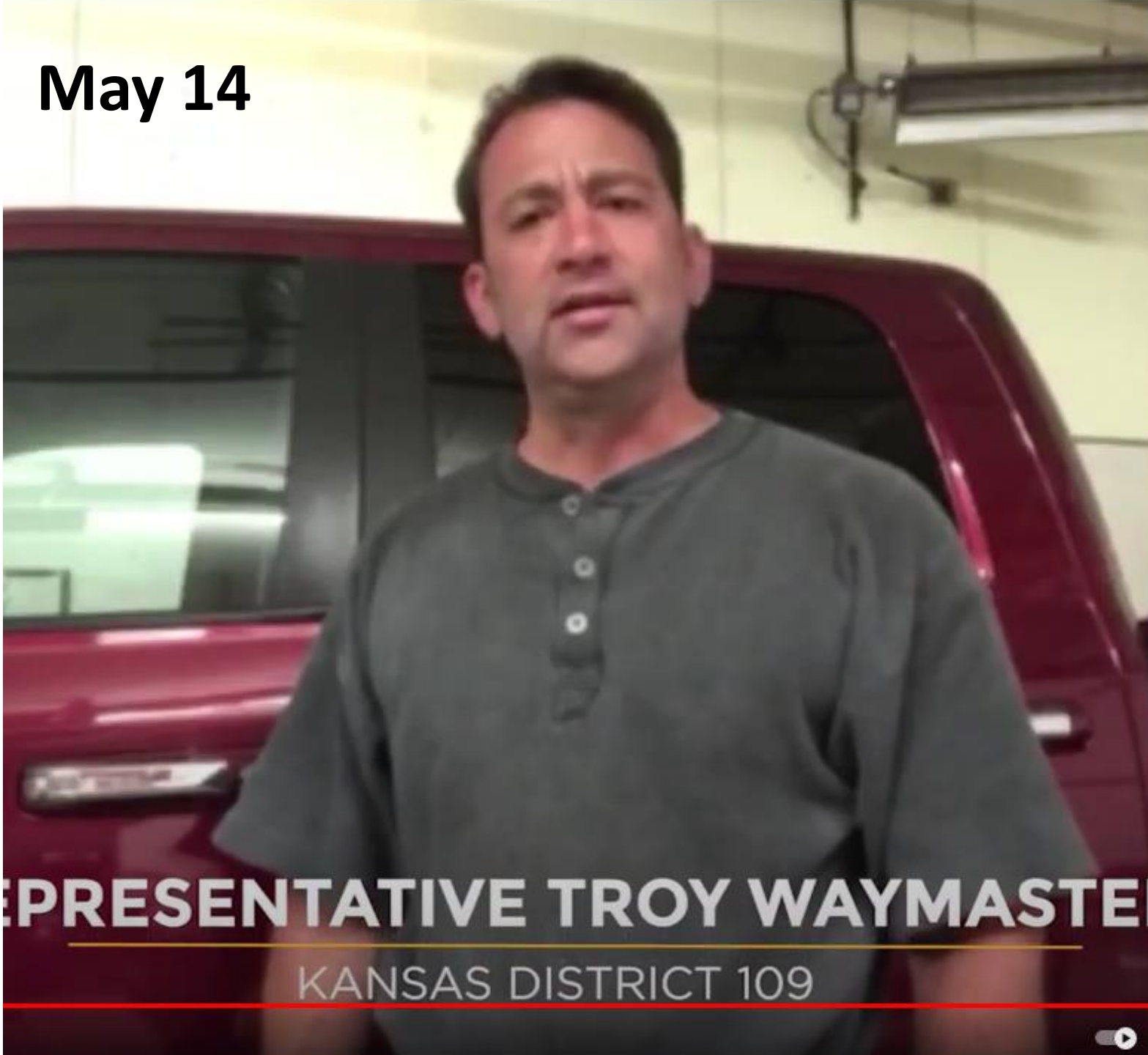
THE EISENHOWER LEGACY
TRANSPORTATION PROGRAM

Thank You

March 19

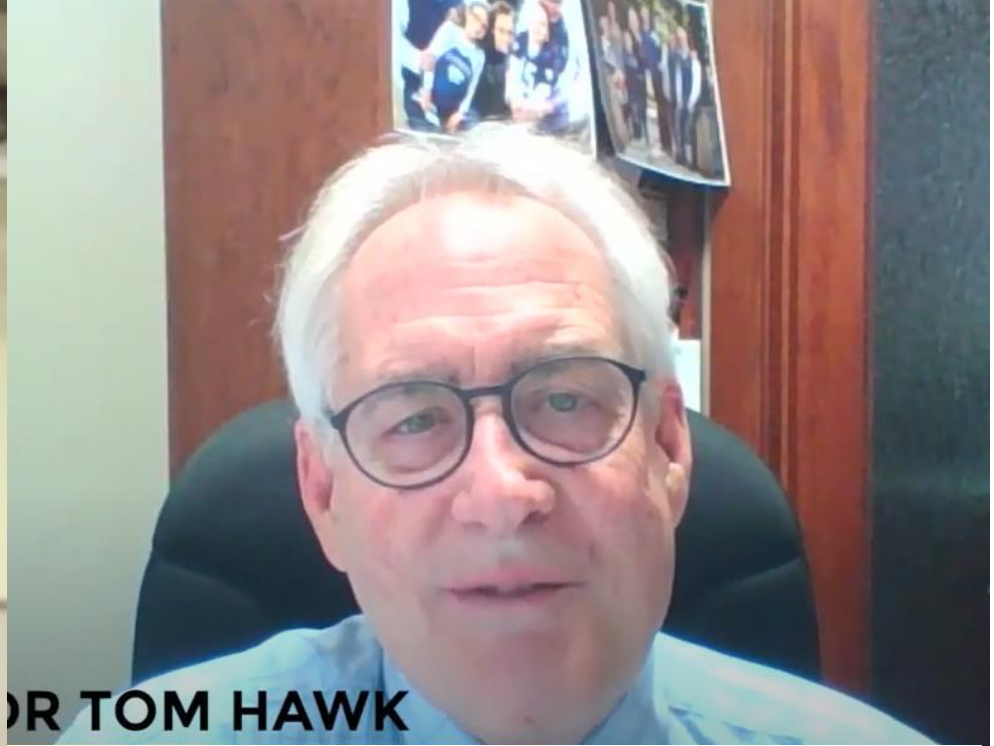


May 14



REPRESENTATIVE TROY WAYMASTE

KANSAS DISTRICT 109



DR TOM HAWK





**Transportation is about
roads and bridges**

 **AND**

so much more





2,000+ Kansans

Transportation is about roads and bridges
AND so much more

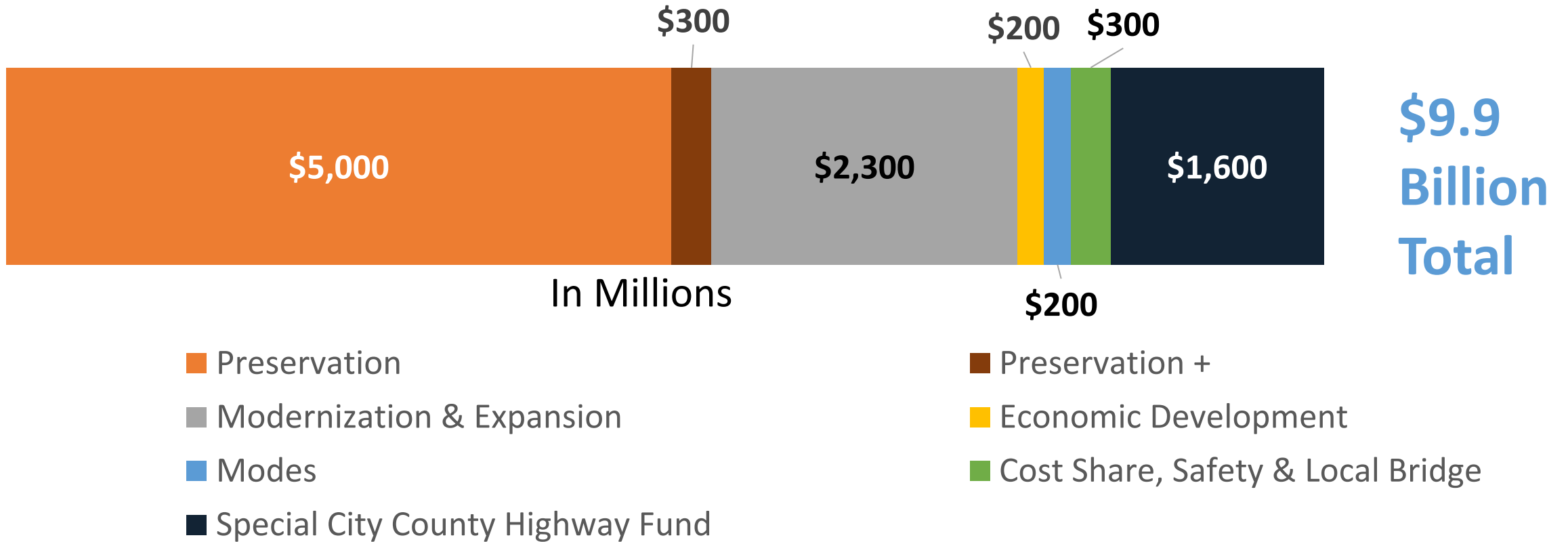
New IKE program serves today's & tomorrow's needs

- \$9.9 billion over 10 years
- Strengthens infrastructure
- More economic growth opportunities





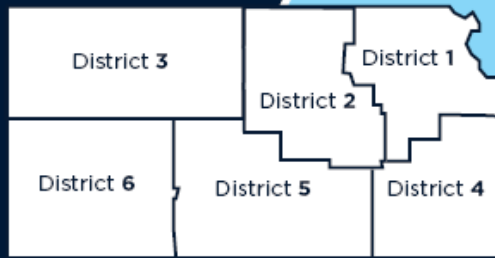
Estimated investments over 10 years



Note: Modernization & Expansion estimate does not include T-WORKS projects



Estimated minimum investments by district



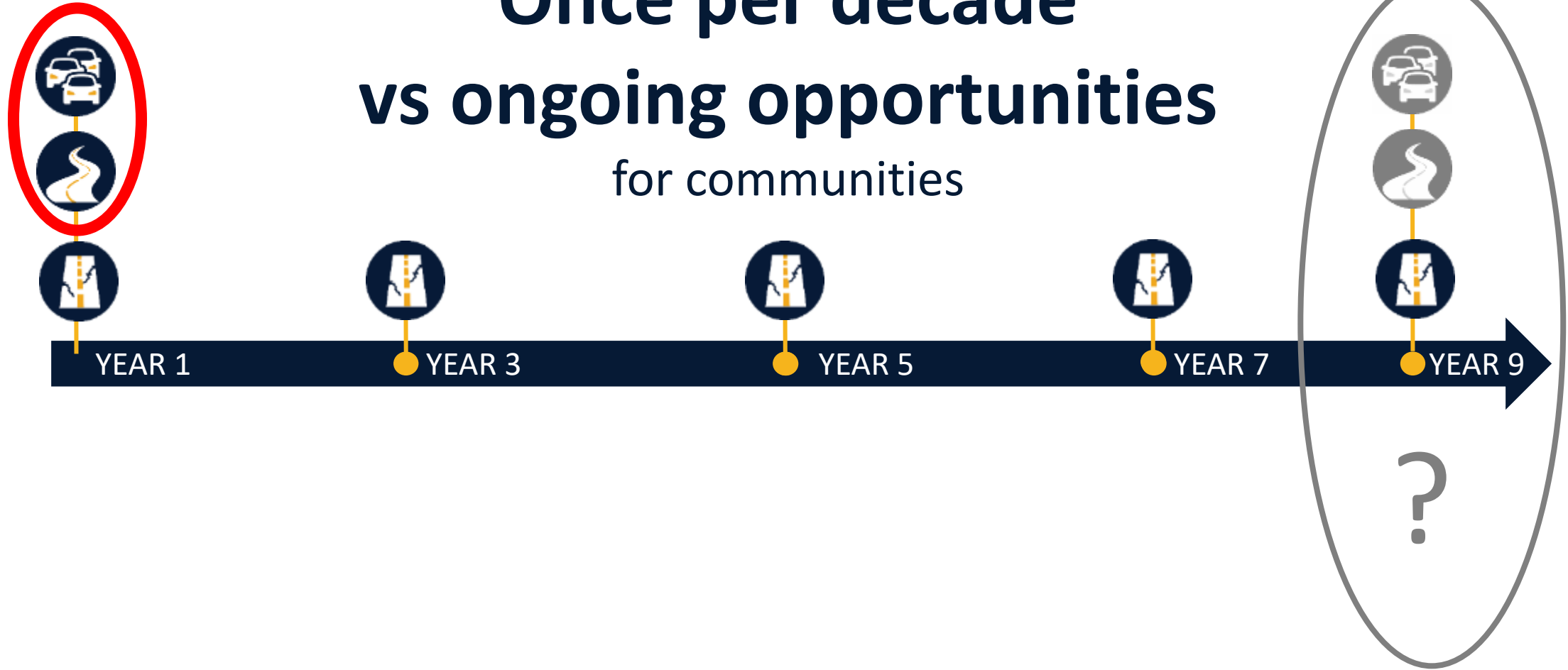
	MODERNIZATION & EXPANSION (ESTIMATED MINIMUM)	PRESERVATION SPENDING (ESTIMATED MINIMUM)	TOTAL (ESTIMATED MINIMUM)
DISTRICT 1*	\$500 MILLION	\$1.3 BILLION	\$1.8 BILLION
DISTRICT 2	\$70 MILLION	\$600 MILLION	\$670 MILLION
DISTRICT 3*	\$50 MILLION	\$700 MILLION	\$750 MILLION
DISTRICT 4	\$100 MILLION	\$550 MILLION	\$650 MILLION
DISTRICT 5	\$300 MILLION	\$800 MILLION	\$1.1 BILLION
DISTRICT 6	\$100 MILLION	\$500 MILLION	\$600 MILLION
TOTAL	\$1.1 BILLION	\$4.4 BILLION	\$5.6 BILLION

*PRESERVATION WORK ON I-70 IS INCLUDED

AVERAGE PRESERVATION COST PER MILE RURAL: \$160,000

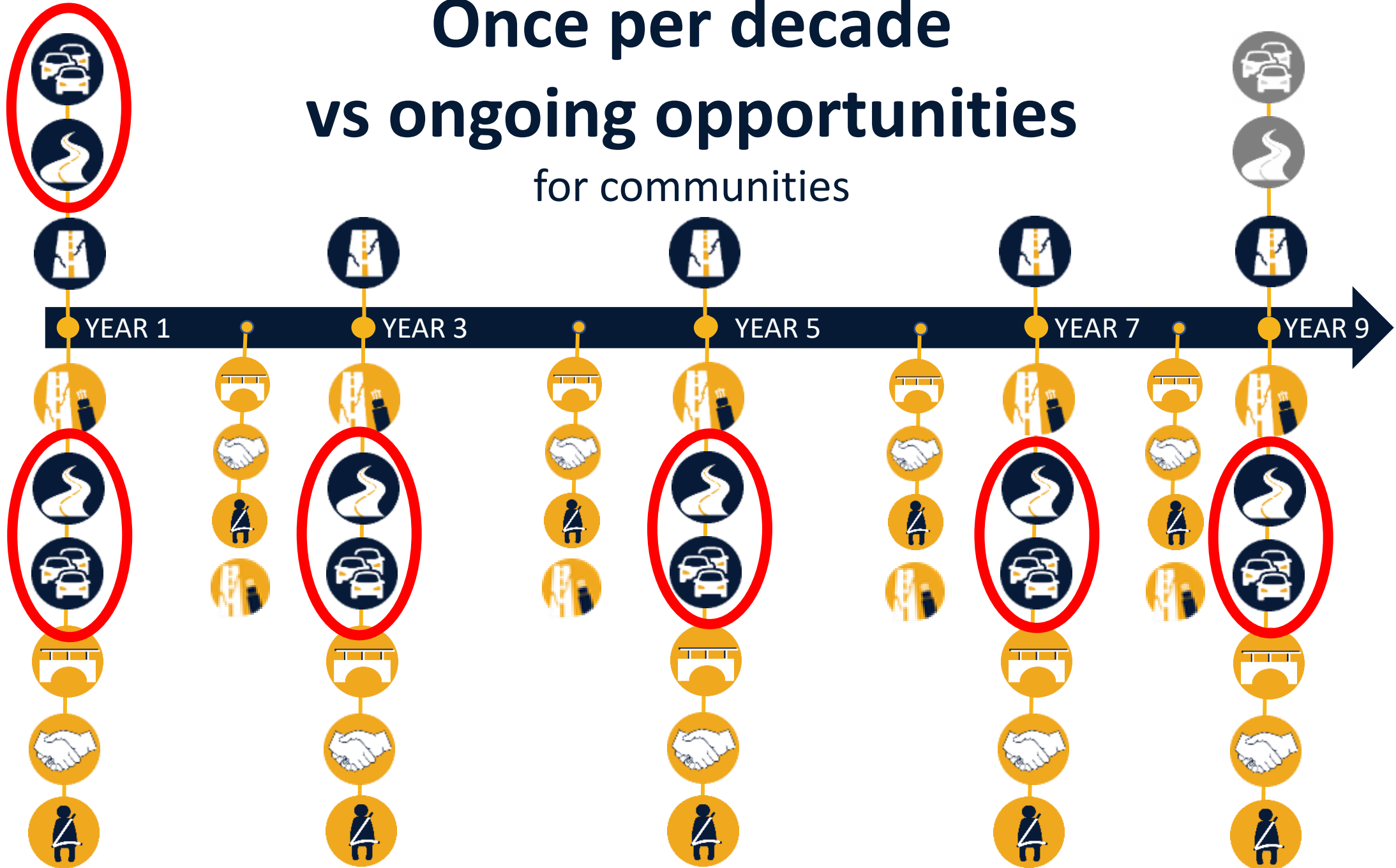
AVERAGE PRESERVATION COST PER MILE URBAN: \$900,000

Once per decade vs ongoing opportunities for communities



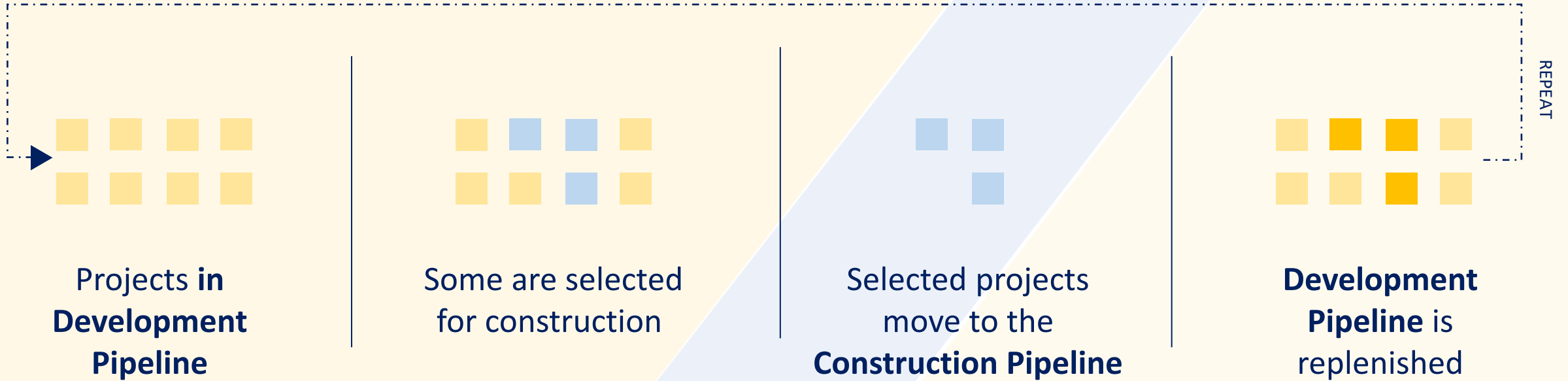


Once per decade vs ongoing opportunities for communities





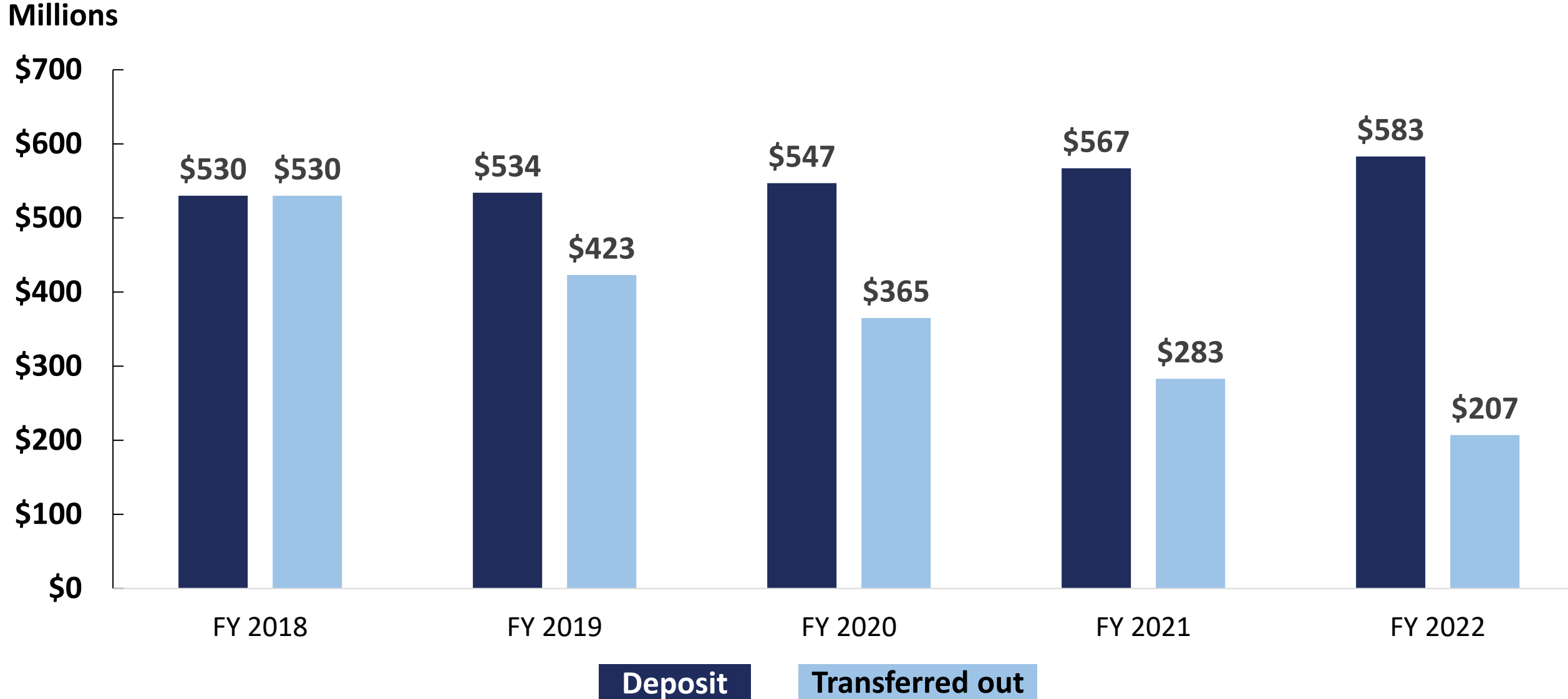
HIGHWAY DEVELOPMENT AND CONSTRUCTION PIPELINES



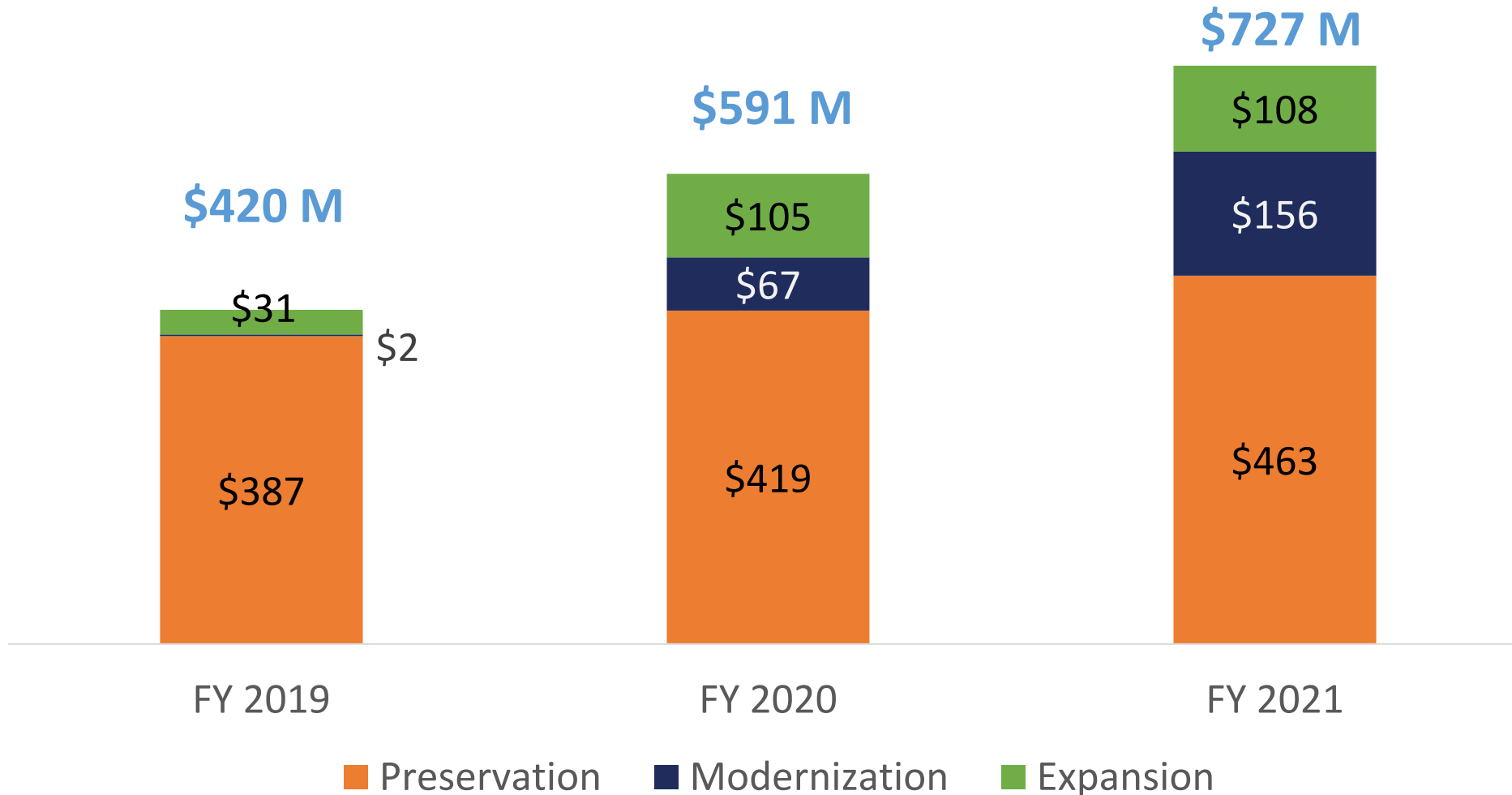
DEVELOPMENT PIPELINE: Allows preliminary engineering work (the design and additional advance work) to begin

CONSTRUCTION PIPELINE: When ready and budget allows, some of the projects from the development pipeline move to the construction pipeline.

Sales Tax Deposits vs Transfers

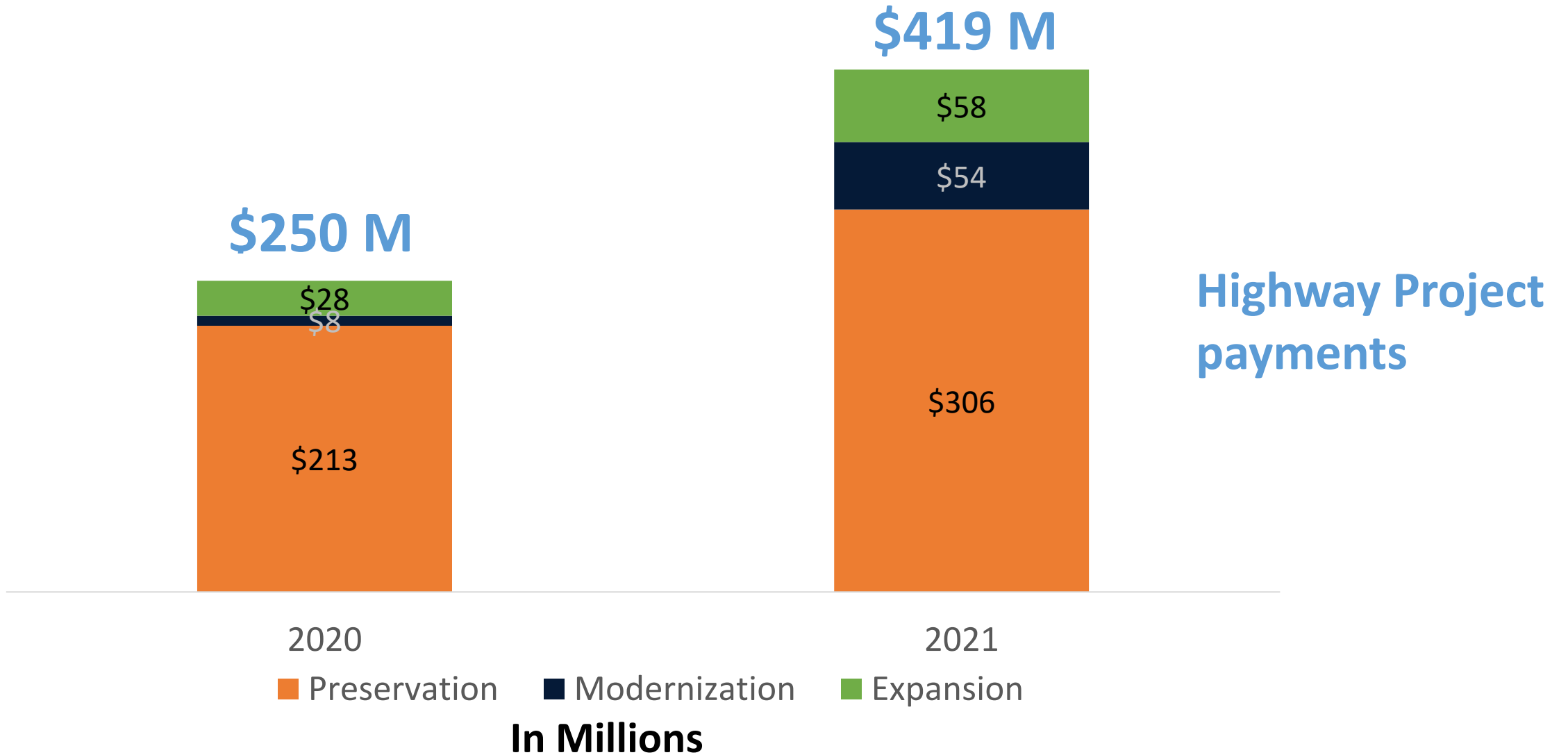


Construction Lettings Increase as Transfers are Reduced



In Millions

Investments & Jobs for Kansas economy



IKE combines the best of the past & new opportunities



Same



New/Reinstated



All new programs were underway in 2020

See slides 26-33 for more info about these programs

✓  PRESERVATION +

✓  BROADBAND

✓  COST SHARE

✓  INNOVATION TECH

✓  LOCAL BRIDGE

✓  DRIVER'S ED

✓  SHORT-LINE RAIL

✓  STRATEGIC SAFETY IMPROVEMENTS



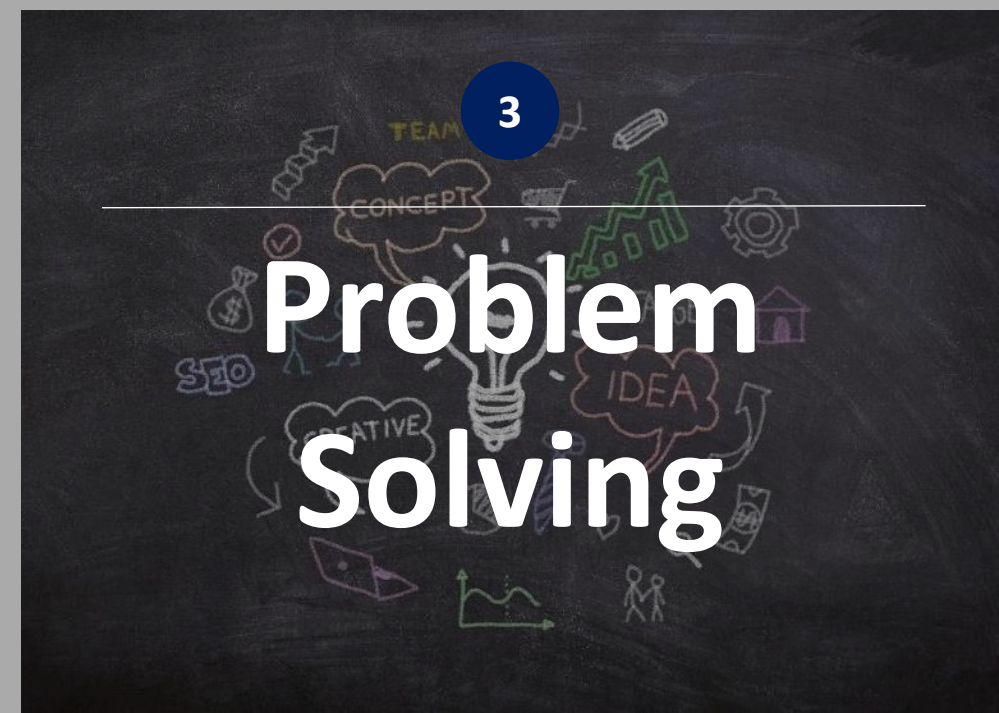
1

Partnerships



2

More Options



3

Problem Solving

Wichita – North Junction

“KDOT’s new **Cost Share program** is a welcome approach for **how the State, cities, counties and businesses can work together** to generate more economic opportunities for Kansas

These investments will address longstanding transportation needs, **create jobs and deliver long-term economic opportunities.**”

-Andrew Wiens,
Wichita Regional Chamber

Wichita North Junction
Courtesy Interstate-Guide.com



Parsons – 21st St. Bridges

“**Without these bridges** working in full capacity, an effective **emergency response** to industry, business and residential as well as general traffic flow could be **severely hampered.**”

- Parsons Fire Chief Jay Hawks

Labette County Medical Center



Cost Share has benefited rural and urban areas



Kansas economic recovery

- **Transportation investments create good jobs & more economic opportunities**
- **Creating a faster and better project delivery process has well positioned us**
- **Stimulus prep team**



AMELIA EARHART MEMORIAL BRIDGE
ATCHISON, KANSAS
Completed by the WPA in 1938



Stimulus Pipeline Progress – Thank you to our Prep Team

Potential Projects Ready

April 2020



34+
total projects

Today



133+
total projects

- Let within 1 year
- Let within 18 months
- Let within FY 2023

Potential Dollars Ready

April 2020



\$1.8B+
total

Today



\$2.2B+
total

HR 133: Federal COVID Relief Bill

Investment Areas



Increased Preservation Work
\$25 to \$40 M



Increased Local Partnership Projects
\$10 to \$15 M



Keeping State & Local budgets whole
\$37.5 M

\$84 M TOTAL



Prioritizing flexibility
to maximize dollars
put on the road





PRESERVATION+



- Projects focused on adding safety improvements and broadband connectivity to preservation projects.
- Broadband projects are evaluated for freight corridors as a first priority.

2020 Progress

- \$7M in safety enhancements
- \$10M in conduit & fiber for 150 miles of priority freight routes



STRATEGIC SAFETY IMPROVEMENT PROGRAM



- New program that utilizes funds for safety improvements to the state highway system.
- Projects are selected each spring through a data-driven safety screening analysis, with local input.
- \$10M per year

2020 Progress

- 1st construction project underway



LOCAL BRIDGE IMPROVEMENT PROGRAM

- Improvements to structurally-deficient or functionally-obsolete bridges owned by cities or counties.
- Planning a call for applications this fall.
- 10% local match required.
- \$5M available annually.

2020 Progress

- **\$5.1M** awarded to:
 - **27 counties**
 - **3 cities**



SHORT LINE PROGRAM



- Funds for maintenance, reconstruction or replacement of railroad track.
- Will support short line railroads and any partnering industry with track located on or adjacent to a short line railroad.
- 30% local match required. \$5M/year for FY 21-23.
- Projects announced this fall.

2020 Progress

- **\$5 M contributed by KDOT**
- **\$2 M contributed by public/private entities**
- **13 projects awarded**



INNOVATIVE TECHNOLOGY



- Grants to support new transportation technology, including Unmanned Aerial System (UAS) development.
- Applications in review with projects announced this fall.
- \$3M per year.

2020 Progress

- **\$1.3M** awarded to **5 projects**



BROADBAND



- Jointly administered by KDOT and the Kansas Department of Commerce.
- Application process. Grants can fund up to 50% of construction costs to expand and improve broadband service.
- \$5 million available.

2020 Progress

- **Applications opened Dec. 7.**
- **Application evaluations underway now**



DRIVER'S EDUCATION FUNDING



- Grants to help offset the cost of driver education course – up to \$200/student.
- Kansans age 30 and under eligible.

2020 Progress

- **Nearly 1,000 students participated in the program**



COST SHARE PROGRAM



- Improvements on state and/or local systems.
- Open to all modes.
- Funding for construction projects that improve safety, leverage state funds and helps both rural and urban areas of the state.

2020 Progress

- **\$21.7M** contributed by communities
- **\$26.1M** contributed by KDOT
- **\$38 projects** awarded