



# K-TRAN

## KANSAS TRANSPORTATION RESEARCH AND NEW - DEVELOPMENTS PROGRAM

The K-TRAN Program is an ongoing, cooperative, and comprehensive research program addressing transportation needs of the State of Kansas utilizing academic and research resources from the Kansas Department of Transportation, Kansas State University, and the University of Kansas. Projects included in the annual research program are jointly developed by professionals at KDOT, KSU, and KU.

Major benefits of the program include: development of high quality transportation research targeted to Kansas transportation needs; financial support to engineering students contributing to the pool of transportation professionals in Kansas; continuing education opportunities for KDOT personnel; enhanced quality of faculty, staff, and graduates in the transportation area; attracting federal research resources for use in Kansas; and an efficiently organized transportation research resource in Kansas.

Electronic full text copies of completed K-TRAN research reports and summaries may be located on the [KDOT Research Reports Catalog](#) web site.

Information about active K-TRAN projects may be found on TRB's Research in Progress website: <https://rip.trb.org/>

Contacts for more information:

Dan Wadley, P.E., Bureau Chief, Bureau of Research, and Chairman of the K-TRAN Research Technical Committee (785-291-3845) Fax: (785-296-2526),  
[Dan.Wadley@ks.gov](mailto:Dan.Wadley@ks.gov)

KSU: Christopher Jones, Ph.D., Kansas State University (785-532-1578),  
[jonesca@ksu.edu](mailto:jonesca@ksu.edu)

KU: Lisa Koch, University of Kansas (785-864-4578), [kolisach@ku.edu](mailto:kolisach@ku.edu)

## K-TRAN ANNUAL SOLICITATION GUIDELINES

Annual solicitation for research ideas is distributed in early June. Research project statements that are submitted by annual deadline will be evaluated by K-TRAN Area Panels and prioritized by the Research Technical Committee. The Research Program Council approves an annual program using input from the Research Technical Committee and Area Panels. The nine Area Panels that have been organized for the review and development of research ideas are:

- Planning (Rail, Freight, Public Transit, Pedestrian & Bicycle)
- Local Governments
- Geometric Design, Drainage, and Environmental
- Structures & Geotechnical
- Traffic Design (Engineering, Signing, and Traffic Control)
- Transportation Safety (Traffic Safety, Crash Data, Operations Safety)
- Innovative Technologies, Information Technology, Computing, and Aviation
- Project Delivery (Construction Contracts & Materials)
- Field Operations (Field Construction & Maintenance)

Research Needs Day is held in August in Topeka to discuss research needs developed from the annual idea solicitation and other topics of interest to both the Area Panel members and faculty attending. This is an opportunity for university faculty to discuss potential research topics they have and get feedback prior to preparing their research project statements (pre-proposals).

**Submit one copy of all research project statements using the following format before October 31<sup>st</sup>, each year to your University K-TRAN Technical Committee Coordinating Group Representative:**

University of Kansas  
Lisa Koch  
KU Transportation Center  
1536 West 15<sup>th</sup> Street  
Lawrence, KS 66045  
kolisach@ku.edu

Kansas State University  
Christopher Jones, Ph.D.  
Dept. of Civil Engineering  
2118 Fiedler Hall  
Manhattan, Kansas 66506  
jonesca@ksu.edu

The Universities will number the original research project statements and electronically submit them to KDOT by November 7<sup>th</sup> each year.

## FORMAT FOR RESEARCH PROJECT STATEMENTS

Submit one copy of research project statements (pre-proposals) with no more than two, single-spaced pages containing the following information to your University K-TRAN representative (Christopher Jones, KSU, or Lisa Koch, KU):

- I. RESEARCH PROJECT TITLE
- II. RESEARCH PROBLEM STATEMENT
- III. PROJECT BUDGET
- IV. PROJECT DURATION
- V. KDOT CHAMPION
- VI. PROJECT PRINCIPAL INVESTIGATOR(S)
- VII. RESEARCH PROPOSED OR RESEARCH PROBLEM OBJECTIVE(S)
- VIII. LEVEL OF URGENCY AND PAYOFF POTENTIAL  
Include expected benefits expressed in dollars saved if results expected are obtained and implemented
- IX IMPLEMENTATION STRATEGY
- X SUBMISSION INFORMATION  
Name of submitter  
Date of submission  
Organization  
Phone number  
Address  
Email address

**Use Standard English units in all research project statements, interim reports and final reports. Prepare the final report in Microsoft Word and submit file via email or using KDOT's FTP site.**

## GUIDELINES FOR EVALUATING RESEARCH IDEAS

Guidelines have been developed to assist the Research Technical Committee in formulating and recommending research projects for inclusion in the K-TRAN Program. These guidelines will be used in the review of research ideas for development into complete proposals for further consideration.

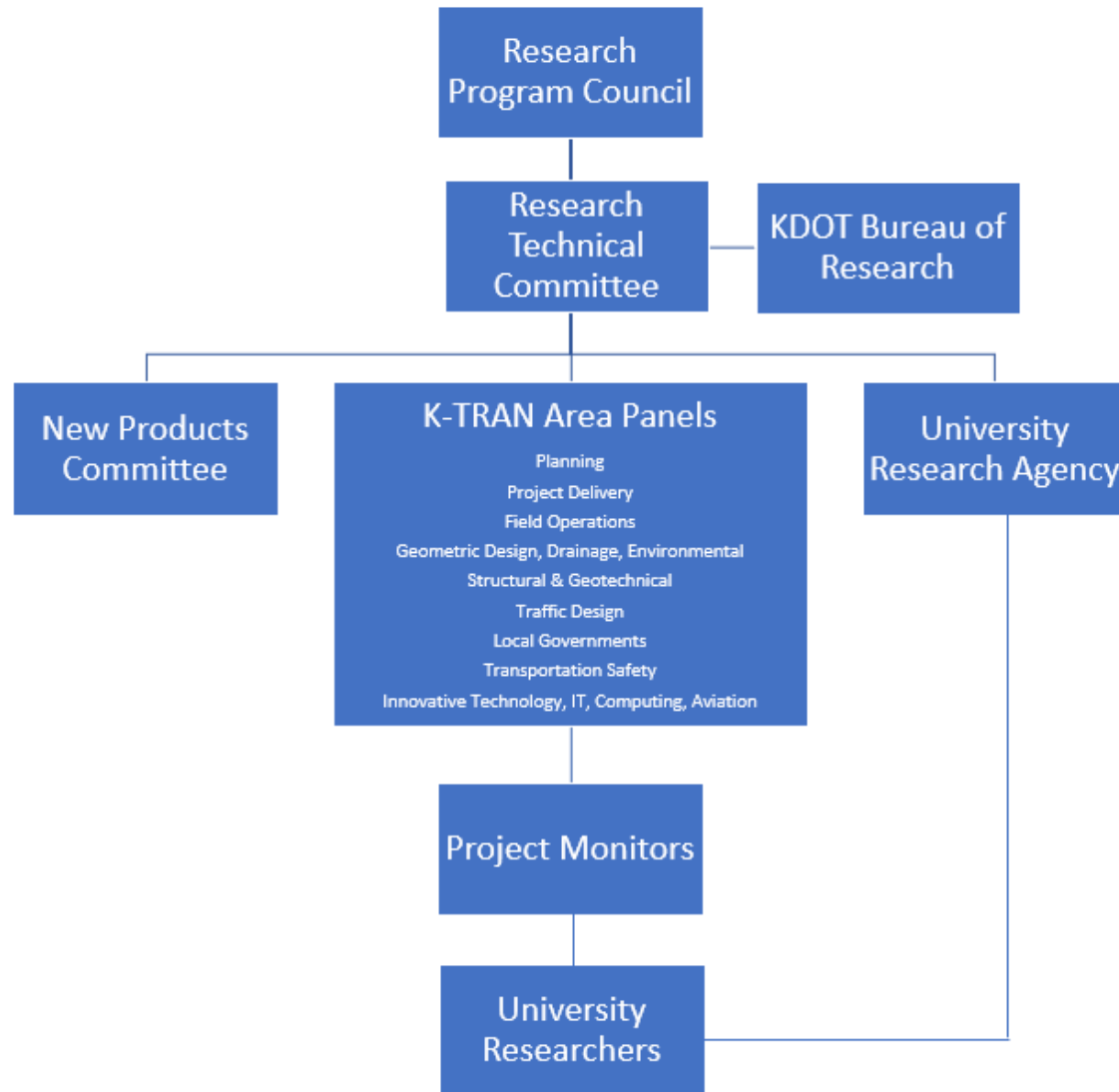
- Relevance to critical research needs of KDOT.
- Projects with a high payoff potential described in dollars that can be saved if the research results as envisioned are realized and are implemented.
- Amount of overlap of the proposed research idea with other programs or completed research (proposed research should not be targeted for research topics or issues currently underway through the National Cooperative Highway Research Program or the Local Technical Assistance Program.)
- Duration of proposed research project. Project statements should be prepared with the most cost-effective duration considering the required workload, typical length of graduate study programs and other factors. The correct length of time shown should result in the project being completed without any cost extensions.
- Extent to which minorities and handicapped persons are involved in the research, either as participants, recipients, or beneficiaries.

## K-TRAN ANNUAL TIMELINE GUIDELINE

<u>Item</u>	<u>Date*</u>
Solicit research ideas from KDOT staff, local government staff, Kansas Turnpike Authority, University faculty and Industry associations	June 1
Research ideas due to Bureau of Research	July 1
Send KDOT Research Needs to University	July 15
All K-TRAN research project contracts signed	Aug. 1
Host <u>Research Needs Day</u> for University and KDOT staff	Aug. 17
Research Program Council meets to review ideas, program status & set policy	Sept. 1
Request for K-TRAN research project statements from KU & KSU	Sept. 15
K-TRAN Research Project Pre-proposals Due	Oct. 31
BC & ABC of Research assign Pre-proposals to Area Panels	Nov. 15
Area panel evaluations completed	Dec. 31
Research Technical Committee meets to prioritize Pre-proposals	Jan. 15
Research Program Council meets to approve K-TRAN program and budget	Feb. 15
Asst. Bureau Chief of Research assigns new K-TRAN projects to APL's	Mar. 1
Area Panel Leaders assign Project Monitors (submit names to ABC, Research)	Mar. 15
Asst. Bureau Chief of Research provides project related information to all University and KDOT staff involved in new projects	Apr. 1
Research hosts Project Monitor Training Day to provide orientation to new Project Monitors	Apr. 4
For early start projects (before July 1), contracts prepared and signed	May 1
For projects starting July 1, detailed proposals are prepared for each project by Principal Investigator and approved by Project Monitor	June 1

\*approximate dates

# KDOT Research Organization



## Research Technical Committee

### **At Large Members:**

*Chair:* Dan Wadley (785-291-3845), [dan.wadley@ks.gov](mailto:dan.wadley@ks.gov)

*Secretary:* David Behzadpour (785-291-3847), [David.Behzadpour@ks.gov](mailto:David.Behzadpour@ks.gov)

Greg Schieber, Director, Division of Project Delivery (785-291-3856),  
[Greg.Schieber@ks.gov](mailto:Greg.Schieber@ks.gov)

Shawn Brown (785-296-1382), [Shawn.Brown@ks.gov](mailto:Shawn.Brown@ks.gov)

### **Area Panel Leaders:**

*Planning (Rail, Freight, Public Transit, Pedestrian & Bicycle):* Mike Moriarty, Chief, Bureau of Transportation Planning (785-296-3841), [Michael.Moriarty@ks.gov](mailto:Michael.Moriarty@ks.gov)

*Project Delivery:* Greg Schieber, Director, Division of Project Delivery (785-291-3856),  
[Greg.Schieber@ks.gov](mailto:Greg.Schieber@ks.gov)

*Field Operations (Field Construction & Maintenance):* Clay Adams, Director, Division of Field Operations (785-296-2235) [Clay.Adams@ks.gov](mailto:Clay.Adams@ks.gov)

*Geometric Design, Drainage and Environmental:* Scott King, Bureau of Road Design (785-296-3901), [Scott.King@ks.gov](mailto:Scott.King@ks.gov)

*Structures & Geotechnical:* Bob Henthorne, Chief, Bureau of Structures and Geotechnical Services (785-296-4253), [Bob.Henthorne@ks.gov](mailto:Bob.Henthorne@ks.gov)

*Traffic Design (Engineering, Signing, and Traffic Control):* Brian Gower, Chief, Bureau of Traffic Engineering (785-296-7431), [Brian.Gower@ks.gov](mailto:Brian.Gower@ks.gov)

*Local Government:* Tod Salfrank, Chief, Bureau of Local Projects (785-368-7396),  
[Tod.Salfrank@ks.gov](mailto:Tod.Salfrank@ks.gov)

*Transportation Safety (Traffic Safety, Crash Data, Operations Safety):* Vanessa Spartan, Chief, Bureau of Transportation Safety (785-296-8463), [Vanessa.Spartan@ks.gov](mailto:Vanessa.Spartan@ks.gov)

*Innovative Technologies, Information Technology, Computing, and Aviation:* Mike Floberg, Director, Division of Innovative Technologies (785-291-3553),  
[Mike.Floberg@ks.gov](mailto:Mike.Floberg@ks.gov)

### **University of Kansas Designees:**

David Darwin (785-864-3827), [daved@ku.edu](mailto:daved@ku.edu)

Lisa Koch (785-864-4578), [kolisach@ku.edu](mailto:kolisach@ku.edu)

### **Kansas State University Designees:**

Christopher Jones (785-532-1578), [jonesca@ksu.edu](mailto:jonesca@ksu.edu)

Mustaque Hossain (785-532-1576), [mustak@ksu.edu](mailto:mustak@ksu.edu)

### **FHWA Representative:**

Rick Backlund, [richard.backland@dot.gov](mailto:richard.backland@dot.gov)

## K-TRAN Area Panel Members

### **Planning (Rail, Freight, Public Transit, Pedestrian and Bicycle):**

**KDOT:** Mike Moriarty (785-296-8864), [Michael.Moriarty@ks.gov](mailto:Michael.Moriarty@ks.gov)

**FHWA:** Cecelie Cochran (785-273-2636), [Cecelie.Cochran@dot.gov](mailto:Cecelie.Cochran@dot.gov)

**KSU:** Eric Fitzsimmons (785-532-0889), [fitzsimmons@ksu.edu](mailto:fitzsimmons@ksu.edu)

**KU:** Lisa Koch, University of Kansas (785-864-4578), [kolisach@ku.edu](mailto:kolisach@ku.edu)

### **Project Delivery:**

**KDOT:** Greg Schieber (785-296-3856), [Greg.Schieber@ks.gov](mailto:Greg.Schieber@ks.gov)

**FHWA:** Catherine Patrick (785-273-2653), [Catherine.Patrick@dot.gov](mailto:Catherine.Patrick@dot.gov)

**KSU:** Christopher Jones (785-532-1578), [jonesca@ksu.edu](mailto:jonesca@ksu.edu)

**KU:** Robert Parsons (785-864-2946), [rparsons@ku.edu](mailto:rparsons@ku.edu)

### **Field Operations: Field Construction & Maintenance**

**KDOT:** Clay Adams (785-296-2235), [Clay.Adams@ks.gov](mailto:Clay.Adams@ks.gov)

**FHWA:** David Do (785-273-2648), [David.Do@dot.gov](mailto:David.Do@dot.gov)

**KSU:** Christopher Jones (785-532-1578), [jonesca@ksu.edu](mailto:jonesca@ksu.edu)

**KU:** Robert Parsons (785-864-2946), [rparsons@ku.edu](mailto:rparsons@ku.edu)

### **Geometric Design, Drainage and Environmental:**

**KDOT:** Scott King (785-296-3901), [Scott.King@ks.gov](mailto:Scott.King@ks.gov)

**FHWA:** Javier Ahumada (785-273-2649), [Javier.Ahumada@dot.gov](mailto:Javier.Ahumada@dot.gov)

**KSU:** Landon Marston (785-532-1690), [ltmarston@ksu.edu](mailto:ltmarston@ksu.edu)

**KU:** Dennis Lane (785-864-2942), [lane@ku.edu](mailto:lane@ku.edu)

### **Structural & Geotechnical:**

**KDOT:** Bob Henthorne (785-296-4253), [Bob.Henthorne@ks.gov](mailto:Bob.Henthorne@ks.gov)

**FHWA:** Steven Toillion (785-273-2614), [steven.toillion@dot.gov](mailto:steven.toillion@dot.gov)

**KSU:** Hayder Rasheed (Structural) (785-532-1589), [hayder@ksu.edu](mailto:hayder@ksu.edu)

**KU:** Caroline Bennett (Structural) (785-864-3235), [crb@ku.edu](mailto:crb@ku.edu)

**KU:** Jie Han (Geotechnical) (785-864-3714), [jiehan@ku.edu](mailto:jiehan@ku.edu)



**Traffic Design: Engineering, Signing, and Traffic Control:**

**KDOT:** Brian Gower (785-296-3618), [Brian.Gower@ks.gov](mailto:Brian.Gower@ks.gov)

**FHWA:** David LaRoche (785-273-2647), [david.laroche@dot.gov](mailto:david.laroche@dot.gov)

**KSU:** Husain Aziz (785-532-5862), [azizhusain@ksu.edu](mailto:azizhusain@ksu.edu)

**KU:** Steven Schrock (785-864-3418), [schrock@ku.edu](mailto:schrock@ku.edu)

**Local Government:**

**KDOT:** Tod Salfrank (785-368-7396), [Tod.Salfrank@ks.gov](mailto:Tod.Salfrank@ks.gov)

**FHWA:** David Do (785-273-2648), [David.Do@dot.gov](mailto:David.Do@dot.gov)

**KSU:** Eric Fitzsimmons (785-532-0889), [fitzsimmons@ksu.edu](mailto:fitzsimmons@ksu.edu)

**KU:** Lisa Koch, University of Kansas (785-864-4578), [kolisach@ku.edu](mailto:kolisach@ku.edu)

**Transportation Safety: Traffic Safety, Crash Data, Operations Safety**

**KDOT:** Vanessa Spartan (785-296-8463), [Vanessa.Spartan@ks.gov](mailto:Vanessa.Spartan@ks.gov)

**FHWA:** David LaRoche (785-273-2647), [david.laroche@dot.gov](mailto:david.laroche@dot.gov)

**KU:** Steven Schrock (785-864-3418), [schrock@ku.edu](mailto:schrock@ku.edu)

**KSU:** Husain Aziz (785-532-5862), [azizhusain@ksu.edu](mailto:azizhusain@ksu.edu)

As of 7/18/2022