



KDOT Update

Broadband/Fiber Initiatives

Cory Davis
***Director, Multimodal Transportation
and Innovation***



IKE Program

- \$100 Million – Preservation +
 - Conduit/Fiber Installation
 - Transportation and Broadband Benefits
- \$85 Million for Broadband Expansion
 - 3 years of \$5 Million, 7 Years of \$10 Million
 - Construction of Broadband Infrastructure
 - Partnership with Department of Commerce



Fiber Installation

- \$100 Million – Preservation +
- Transportation + Connectivity + Opportunities + Future
 - Middle Mile
 - Freight Routes of Significance



Middle Mile Partnership

- Commerce and Transportation
- Leverage State Funds to Receive Federal Funds
- Allows IKE Funds to go beyond the primary network



Dig Once Strategy

- Add Conduit/Fiber to an existing KDOT project:
 - Preservation +
 - Efficiency in the design process
 - Efficiency in the construction process
- Public Private Partnership
 - Shared Cost of Design and Construction
 - Shared Trench
 - Shared Conduit



Great Plains Rural Freight Technology Corridor Project – US-83

- \$14 Million Project
- Federal Award - \$6.7M
- KDOT Installs Fiber
- Federal funds provide technologies

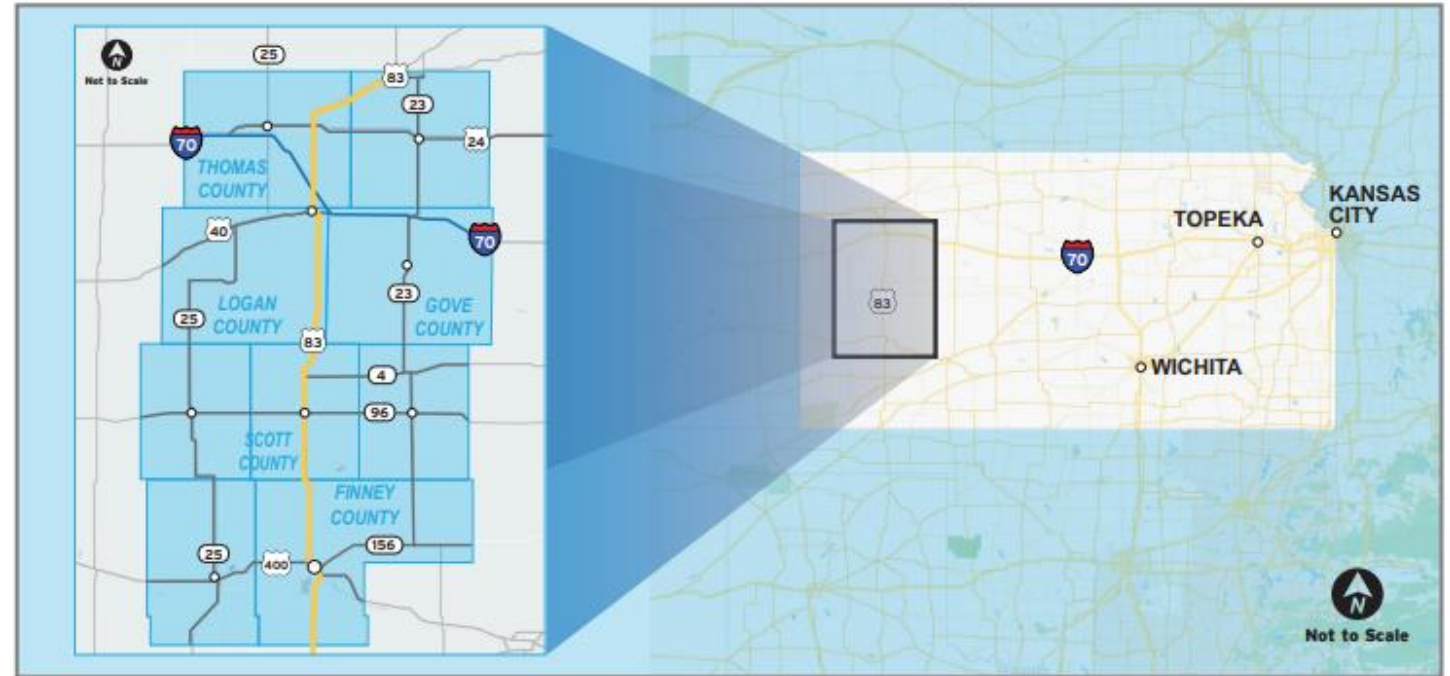
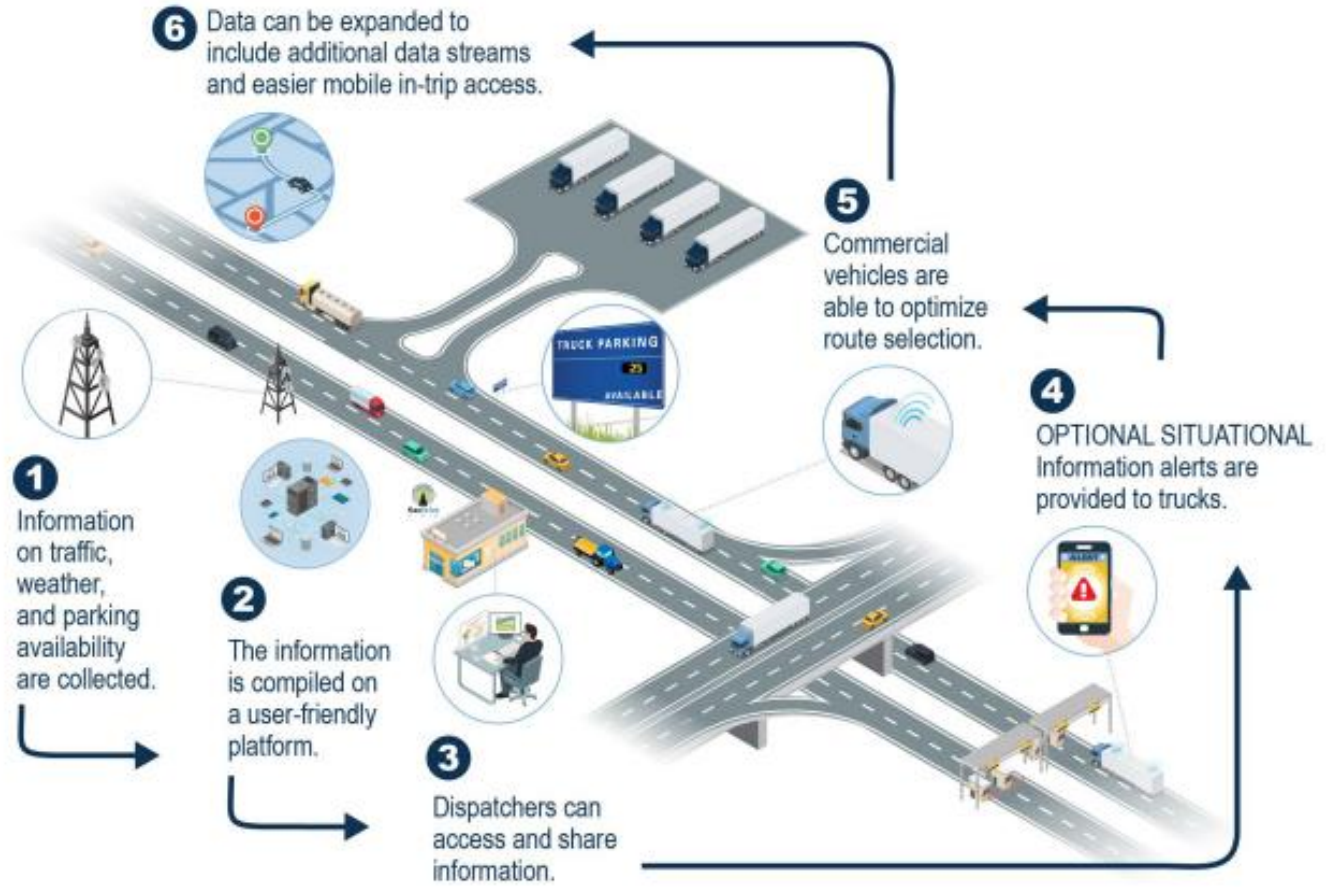


FIGURE 1 - Project Concept



US-83

- Traveler Information
- Transportation Management Technologies
- Infrastructure Maintenance
- Advanced Safety Systems
- Data Collection

Planning for the Future

Connect and secure your roadside infrastructure



Traffic signal controller monitoring

Make remote SPaT (signal phase and timing) adjustments. Modify signal operation to optimize flow of traffic, reducing congestion.



Remote weather information system

Monitor weather and road conditions to warn drivers of hazardous conditions.



Video surveillance

Get real-time visibility into traffic movement and congestion and detect traffic violations. Use analytics to improve safety for pedestrians and cyclists.



Electronic tolling stations

Use automation to reduce traffic delays by making toll collection faster.



Dynamic message signs

Provide drivers with roadway information and guidance on lane closures, traffic accidents, and weather conditions.



Electric vehicle charging

Remotely monitor and maintain charging stations. Provide secure customer billing and payment services.

Source: Cisco.com

Questions?

Cory Davis
Director of Multimodal
Transportation and Innovation
Cory.Davis@ks.gov

